

An aerial photograph of Taos Ski Valley at dusk. The image shows a snow-covered mountain with a ski run visible. Below the mountain, a cluster of buildings, including a large resort hotel and several smaller lodges, are illuminated with warm lights. The surrounding area is covered in dense evergreen forests. The sky is a mix of blue and orange, indicating the time is either dawn or dusk. A semi-transparent dark rectangle is overlaid on the center of the image, containing the text.

Taos Ski Valley

Williams Lake Trailhead

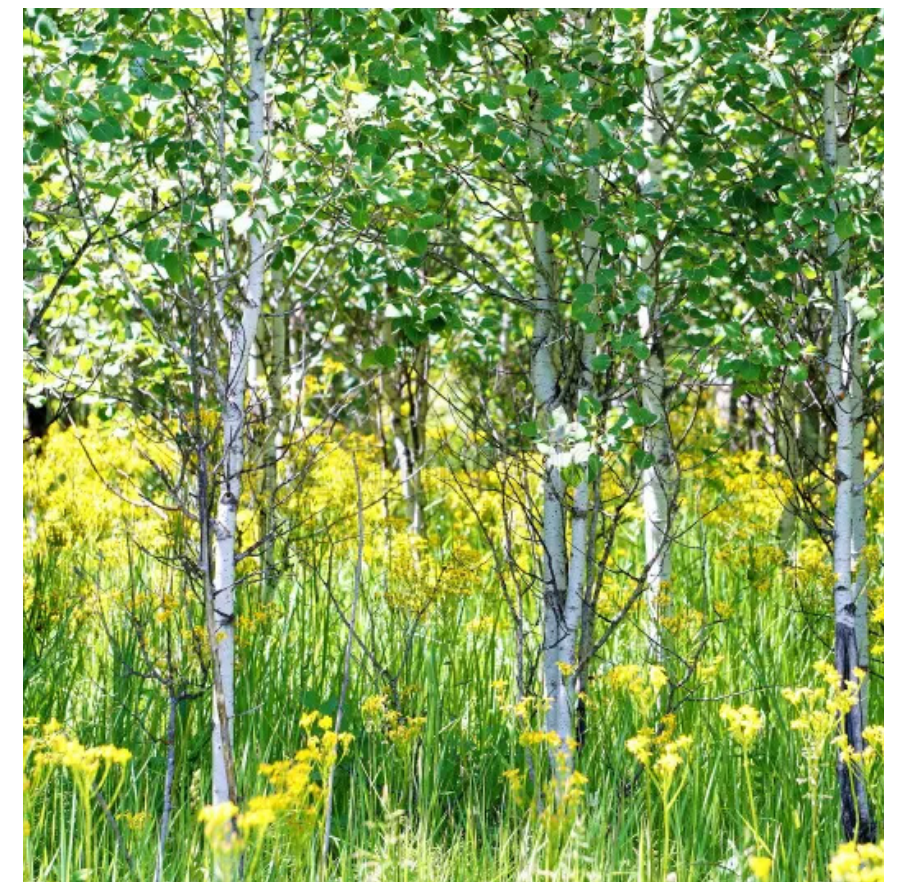
FEBRUARY 2025



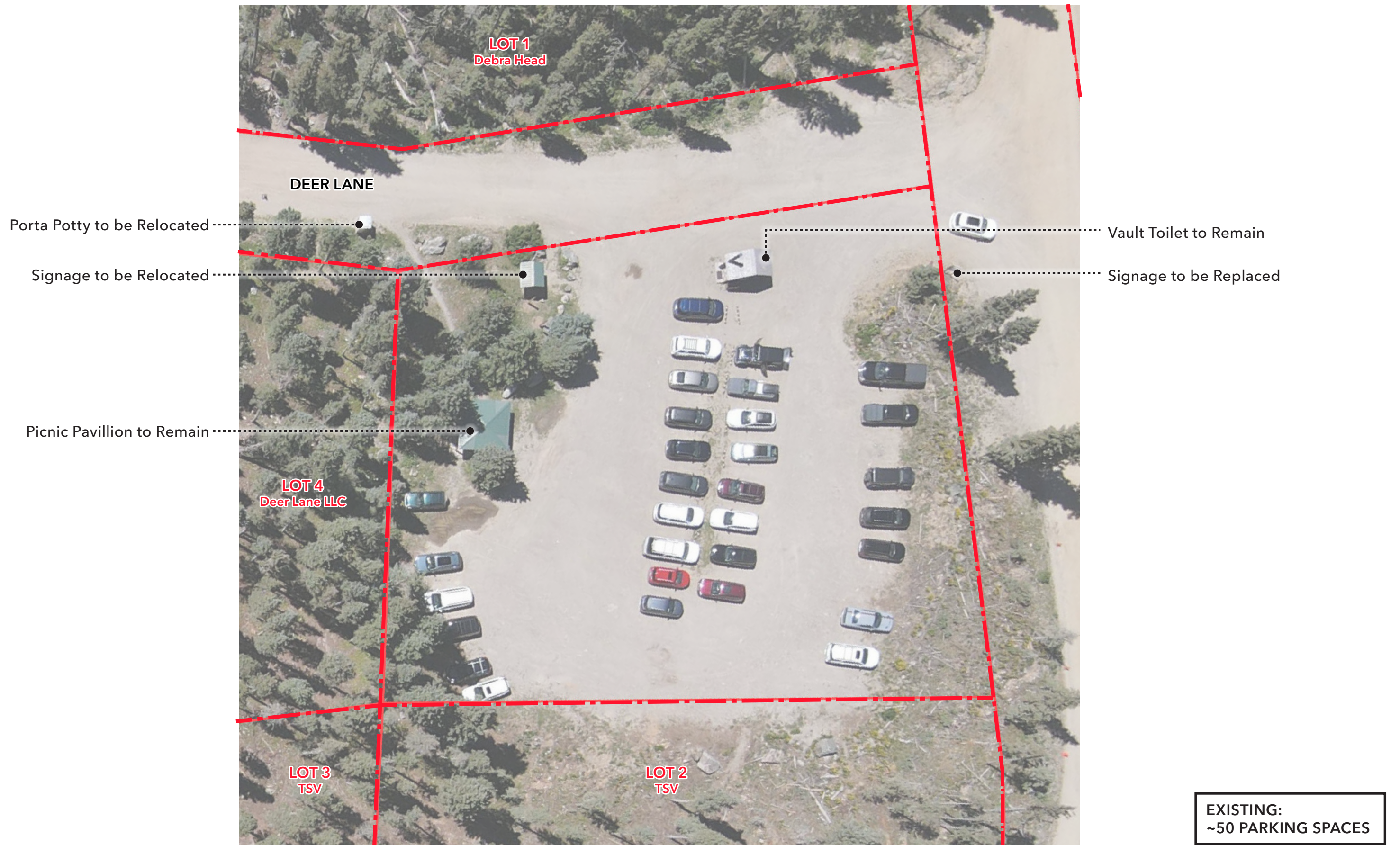
Williams Lake Trail | Existing Conditions



Existing Conditions | Williams Lake Trailhead & Parking



Williams Lake Trailhead & Parking | Existing Conditions





Relocated Williams Lake Trail Sign
(on Village Land)

Relocated Trailhead Kiosk

Decomposed Granite Trail & Plaza

New Directional Signage

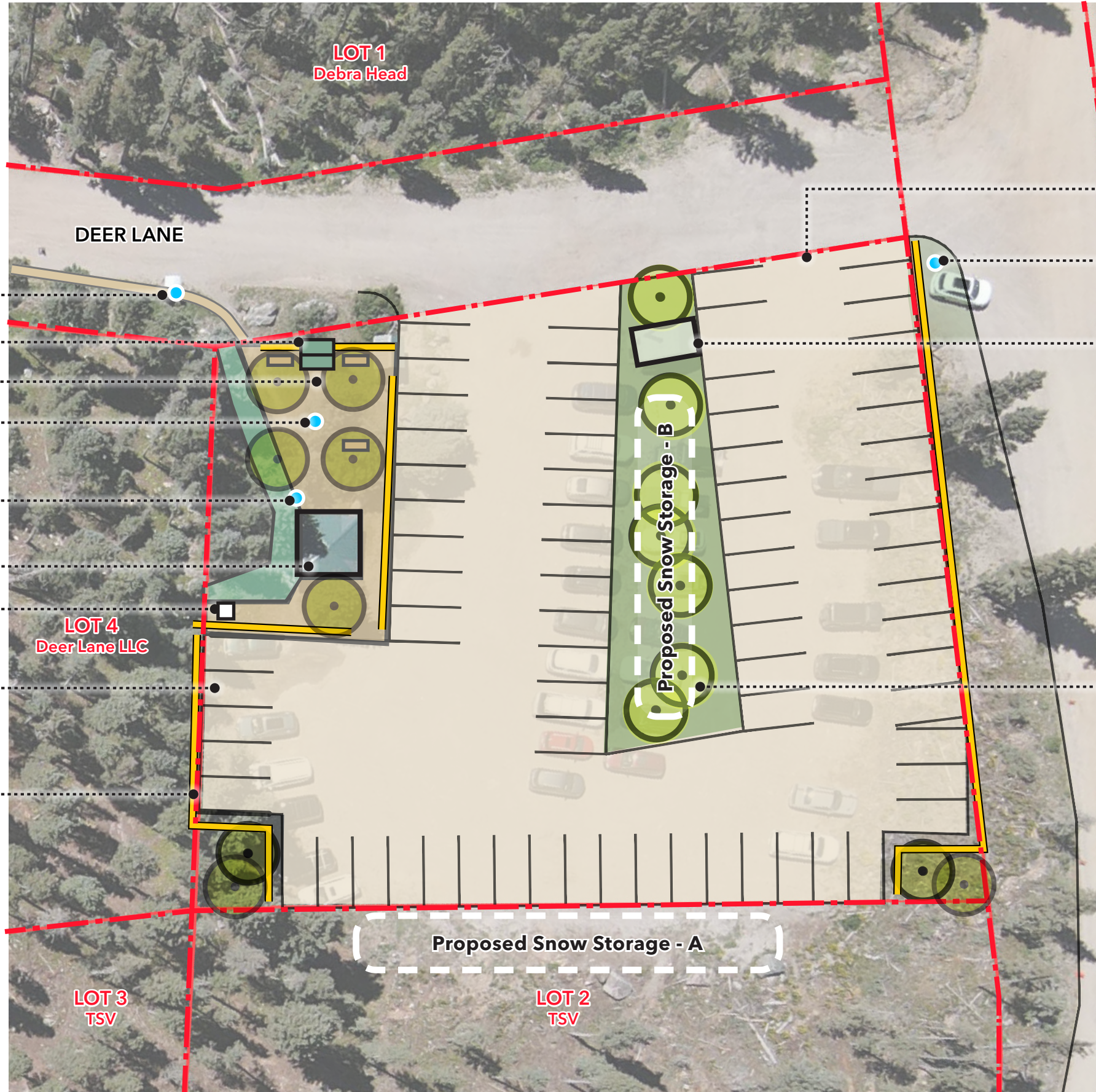
Educational Native Plant Garden

Picnic Pavillion to Remain

Relocated Porta Potty

2 ADA Parking

Fencing to Match Parking at Bavarian



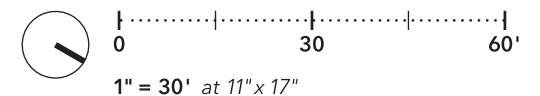
Resurfaced Gravel Lot
(Wide for Snow Plows)

New Kachina Basin Signage
(on Village Land)

Vault Toilet to Remain

Aspen Trees, Typ.
Wide Planting Strip
for Snow Storage

PROPOSED:
70 PARKING SPACES
2 ADA SPACES



Williams Lake Trailhead & Parking | Proposed Improvements



Williams Lake Trailhead & Parking | Proposed Improvements



Existing to Remain

Plaza

18' ADA
Parking

20' Drive Aisle

18' Parking

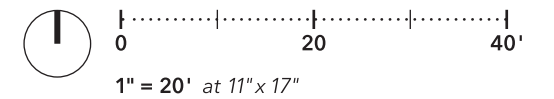
Planting Area /
Snow Storage

18' Parking

20' Drive Aisle

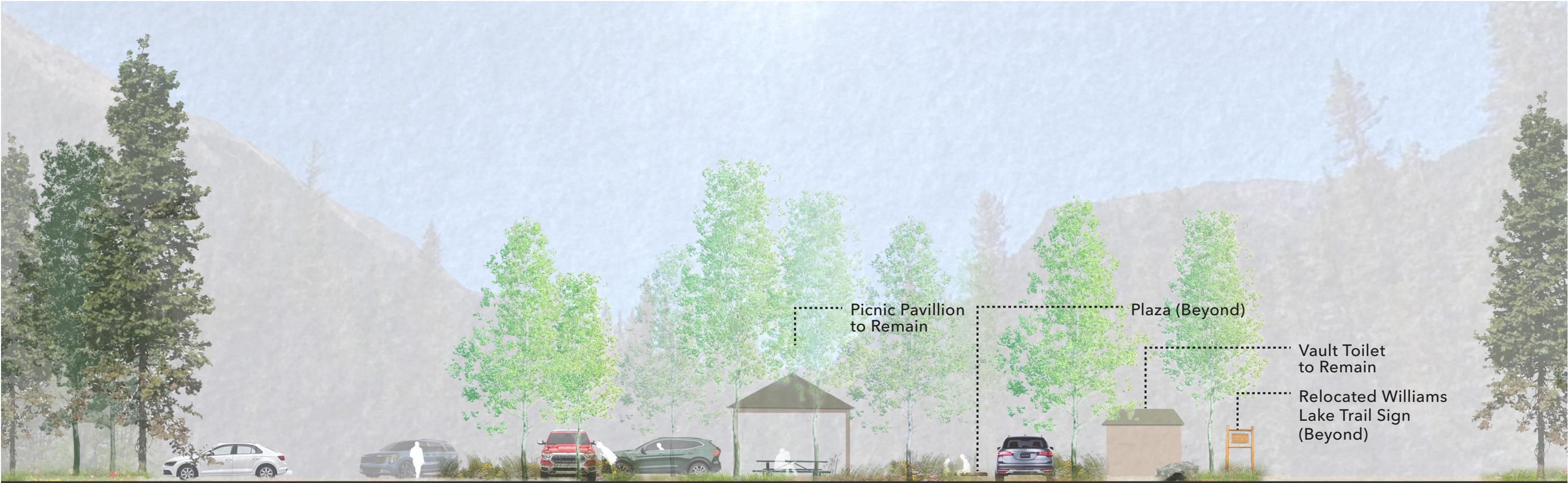
18' Parking

Planting Area



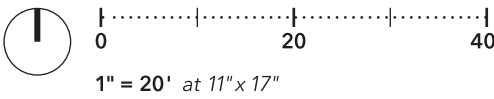
Williams Lake Trailhead & Parking | Proposed Improvements - Section A

HART HOWERTON



Existing to Remain - Potential Snow Storage	18' Parking	20' Drive Aisle	Planting Area / Snow Storage		Deer Lane	Existing to Remain
---	-------------	-----------------	------------------------------	--	-----------	--------------------

Williams Lake Trailhead & Parking | Proposed Improvements - Section B





www.GeckoLandscapingInc.com

**Licensed
Bonded & Insured**

To: TSV att. James

**Credit card payments
will be charged an extra
3.5% CC Fee**

QUANTITY	UNIT COST	DESCRIPTION	TOTAL
525.00	sq ft	10" round post and 8" round 2 runner log fence similar to log fence at Bavarian	0.00
		Materials total	27,603.00
		Labor total	26,760.00
		Equipment and fuel	6,325.00
			0.00
1.00		Plantings: 16- Multi stemmed 1 3/4"- 2" B&B Nursery grown Aspens and 21- 5 gal misc. native shrubs Including installation or re-location of decorative boulders	0.00
		Materials total	11,772.00
		Labor total	875.00
		Equipment and fuel	1,725.00
			0.00
9051.00	sq ft	Seeding of native grass and wildflowers to cover all disturbed areas around parking lot, additionally includes the following: 85 yards of topsoil and 8 yards of pine mulch for native plant garden.	0.00
		Materials total	5,483.00
		Labor total	7,537.00
		Equipment and fuel	3,305.00
		Hydroseeding	2,000.00
			0.00
1885.00	sq ft	Compacted crushed granite Plaza	4,416.00
		Materials total	4,416.00
		Labor total	4,842.00
		Equipment and fuel	1,825.00
			0.00
20780.00	sq ft	Parking lot: Expanding, grading and re-surfacing of parking lot with 130 tons or approximately 4" of basecourse, re-locating of existing signage and installation of new signage.	0.00
		Materials total	6,060.00
		Labor total	5,381.00
		Equipment and fuel	3,200.00
			0.00
			0.00
			0.00
			0.00
			0.00
			0.00
			0.00
		This is not a firm-fixed-price contract and therefore is subject to inflationary adjustments in costs. Adjustment if necessary, will be made one month before the start date. Adjustment may either go up or down according to current material and operating costs.	0.00
			0.00
		Subtotal	119,109.00
9.438%		TSV tax	11,240.91
			130,349.91

Quote valid for : 30 Days

Estimated Start Date: Installation date if approved immediately _____ Weather permitting. Gecko Landscaping reserves the right to change the start date due to unforeseeable circumstances.



Note: Job will not be scheduled until all portions of quote have been signed and initialed.



HART HOWERTON

NEW YORK · SAN FRANCISCO