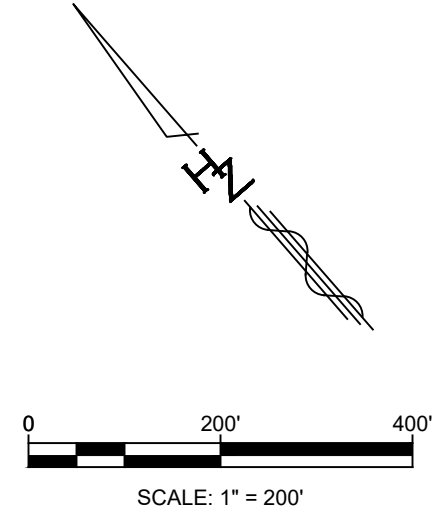
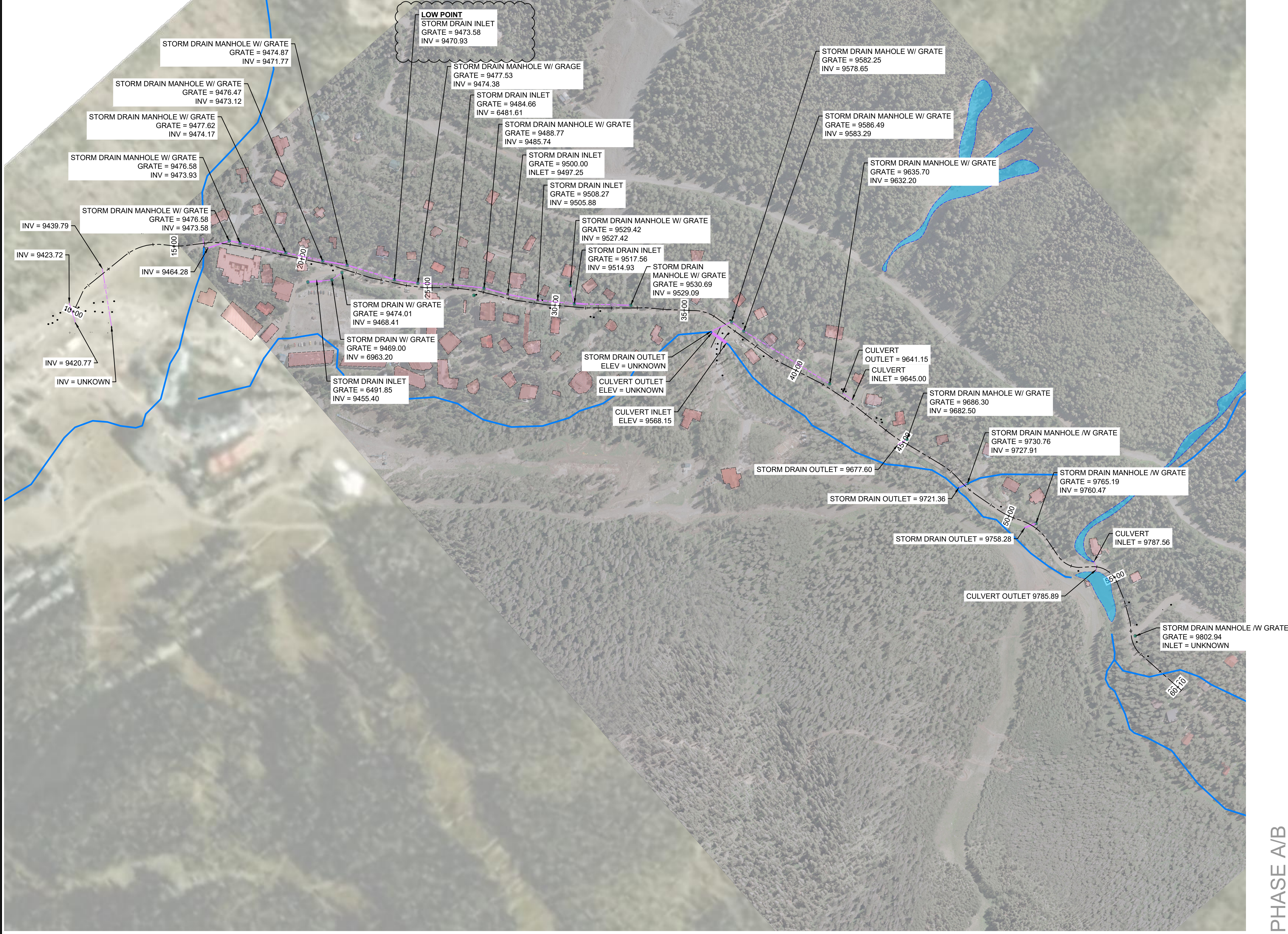


Plotted: 1/24/2021 6:29:16 PM. By: Edingas, Scott  
 File Path: D:\Projects\110110\_1\_AurCAD\Sheet Set\XXX\_STORM  
 DRAIN COMPOSITE.dwg  
 Last Saved: 1/24/2021 6:28:03 PM. Readings



PHASE A/B

Designed By:  
**HUITT-ZOLLARS**  
 Huitt-Zollars, Inc. Albuquerque  
 6501 Americas Pkwy NE, Suite 550  
 Albuquerque, New Mexico 87110  
 Phone (505) 883-8114 Fax (505) 883-5022

VILLAGE OF TAOS SKI VALLEY  
 TWINING ROAD IMPROVEMENTS

TITLE:  
 STORM DRAIN COMPOSITEBIT  
 10+00.00 TO 59+95.00

Design Review Committee	City Engineer	Mo./Day/Yr.	Mo./Day/Yr.

Village Project No.	Zone Map No.	Sheet	Of
XXXX.XX	x	20	12

AS BUILT INFORMATION	
CONTRACTOR	DATE
INSPECTOR'S NAME	DATE
FIELD VERIFICATION BY	DATE
CORRECTED BY	DATE
MICRO-FILM INFORMATION	
RECORDED BY	DATE
NO.	

BENCH MARKS	
FOUND MONUMENT	DATE
STANDARD 3/4" ALUMINUM DISC	
NEW MEXICO STATE PLANE COORDINATES (CENTRAL ZONE-N.A.D. 1983)	
N=1,47,324.83	
E=1,51,214.22	
ELEV=486.627 (NAVD 1988)	
GROUND TO GRID FACTOR=0.999885508	
MAPPING ANGLE=0°14'53.77"	

SURVEY INFORMATION	
FIELD NOTES	DATE
NO.	BY

ENGINEER'S SEAL  
**PRELIMINARY**  
 NOT FOR CONSTRUCTION,  
 BIDDING, OR PERMIT PURPOSES.  
 FOR REVIEW ONLY.

Date: 11/06/20  
 HUITT-ZOLLARS, INC.  
 Consulting Engineers

NO.	DATE	REMARKS	BY
	DESIGNED BY: JLM	DATE: November 6, 2020	
	DRAWN BY: LRT	DATE: November 6, 2020	
	DWG NAME: XX_STORM DRAIN COMPOSITE.dwg	PROJ #: R312496.01	
	CHECKED BY: SAE	DATE: November 6, 2020	