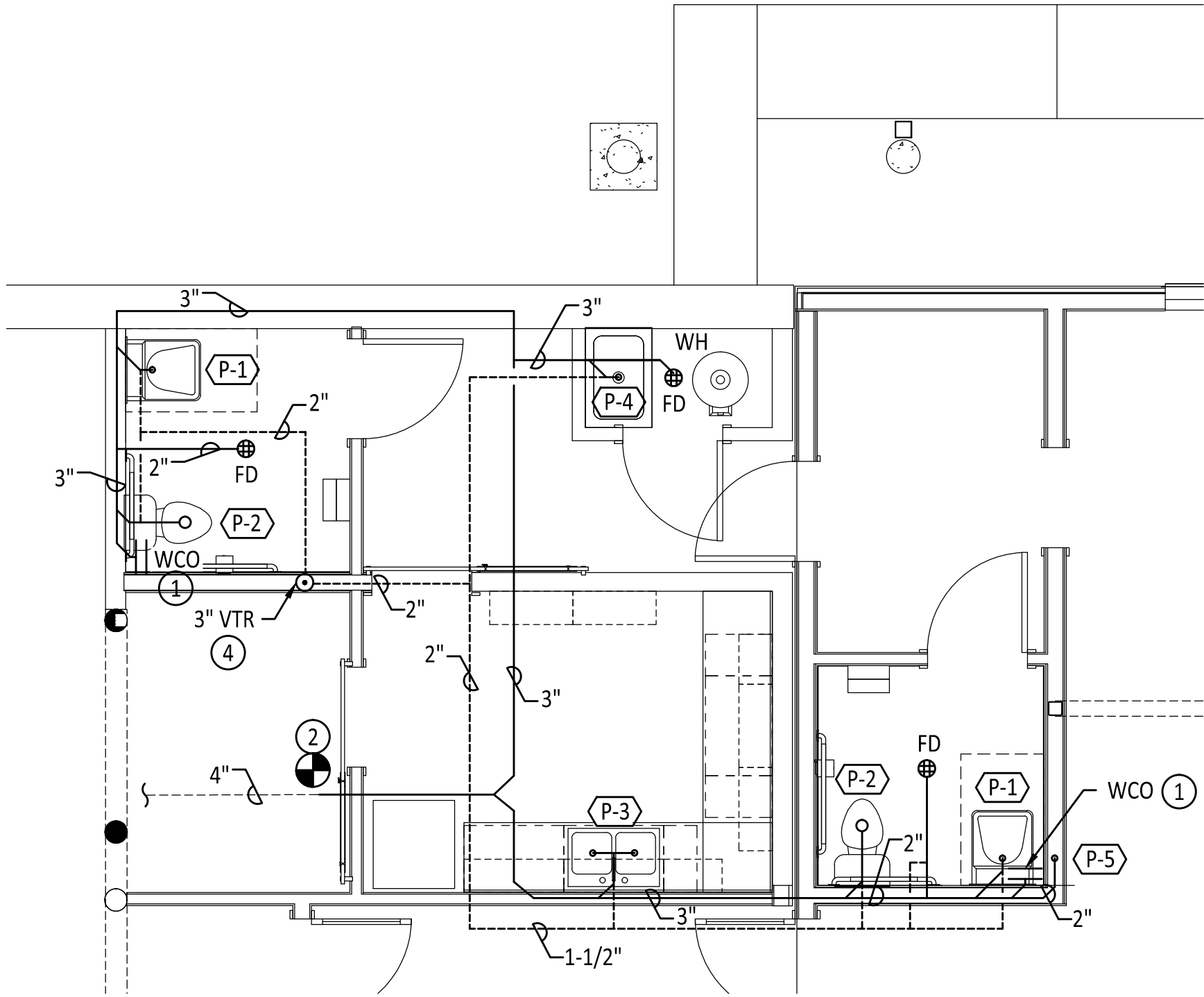


GENERAL SHEET NOTES:

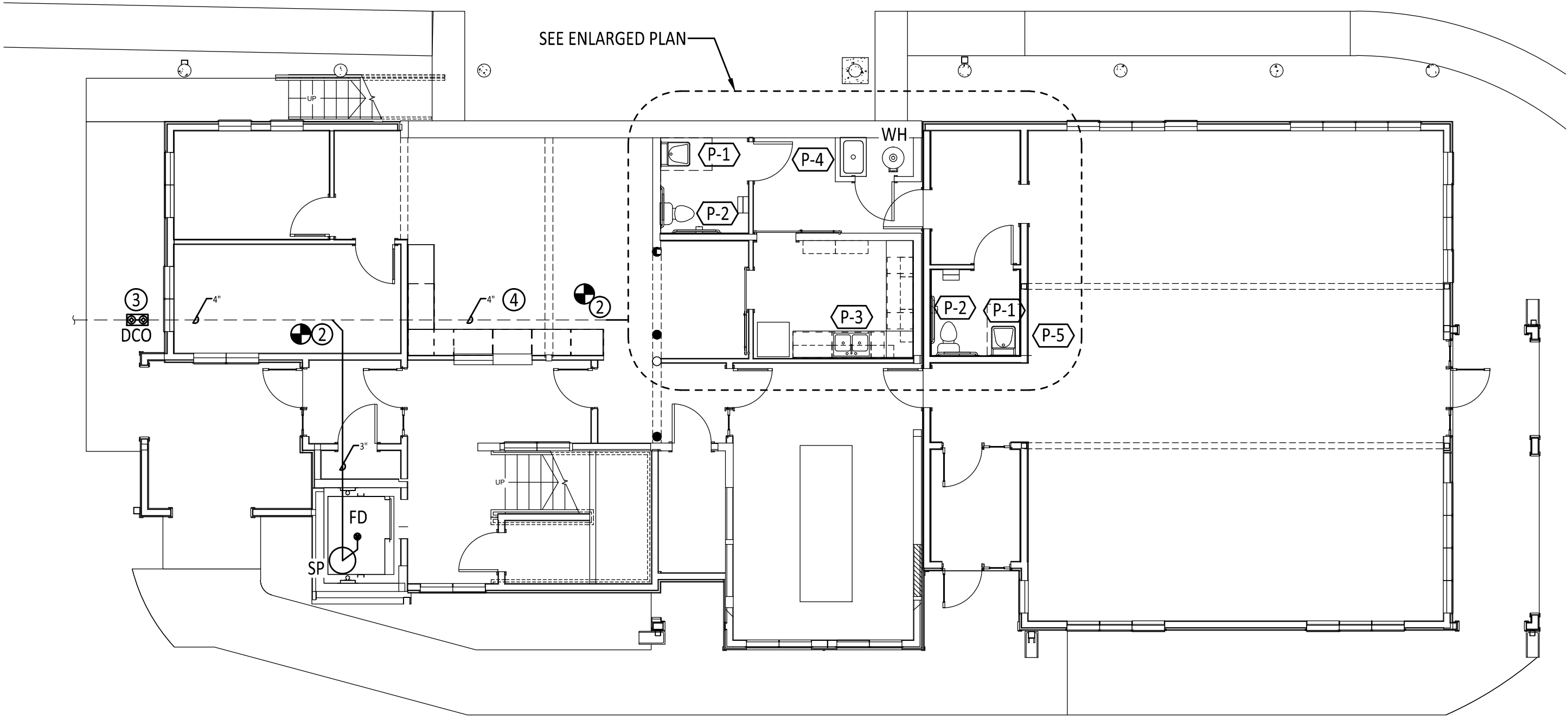
- A. COORDINATE WASTE INVERT AT SERVICE ENTRY POINT WITH CIVIL AND STRUCTURAL ENGINEER PRIOR TO INSTALL.
- B. ROUTE ALL HORIZONTAL VENT PIPING ABOVE LAY-IN CEILING AREAS ONLY.
- C. PROVIDE UPC APPROVED TRAP SEAL DEVICE ON AT FLOOR SINK WASTE CONNECTIONS.

KEYED NOTES:○

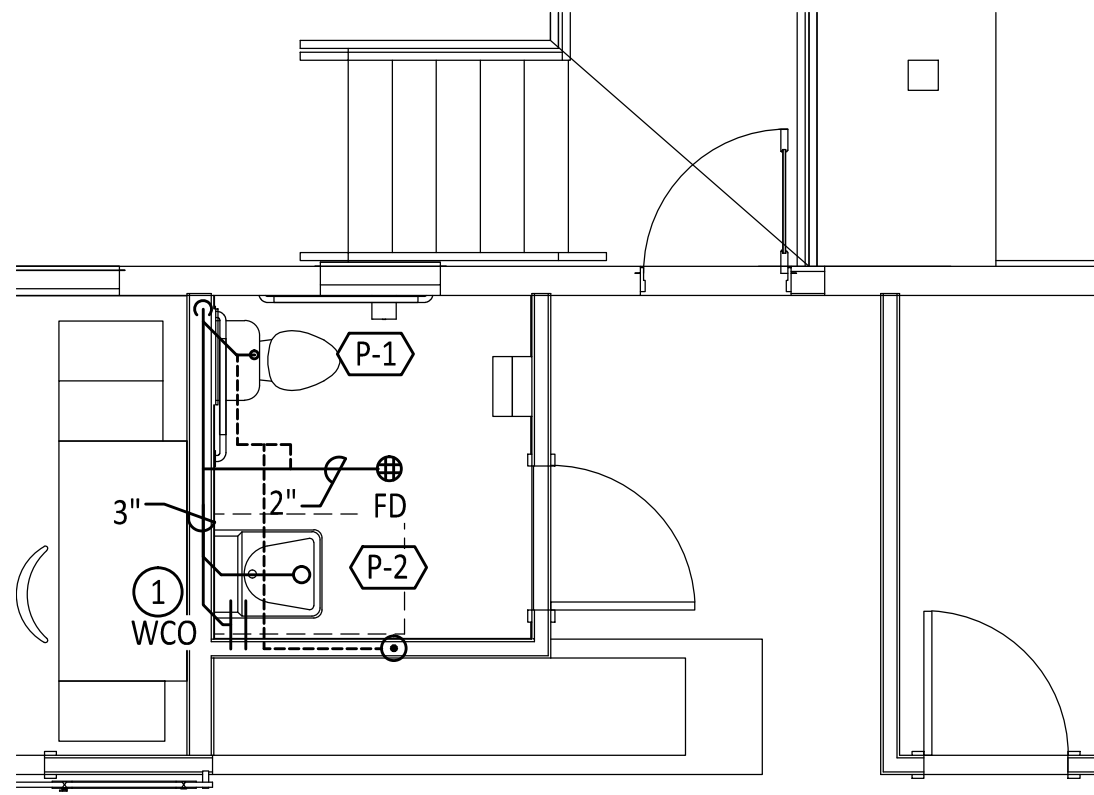
1. INSTALL WALL CLEANOUT ABOVE FINISHED FLOOR AT UPC MINIMUM HEIGHT.
2. FIELD COORDINATE LOCATION OF EXISTING SANITARY SEWER PIPING. CONNECT NEW PIPING TO EXISTING AT LOCATIONS SHOWN.
3. INSTALL DOUBLE CLEANOUT WASTE CONNECTION PER DETAIL ON SHEET P001.
4. ROUTE VENT PIPE UP THROUGH ROOF PER UPC. COORDIANTE WITH ARCHITECT FOR ROOFING TYPE PRIOR TO INSTALL. FIELD VERIFY LOCATION WITH OUTDOOR AIR INTAKE DUCTWORK AND PROVIDE A MINIMUM OF 10 FT. CLEARANCE.



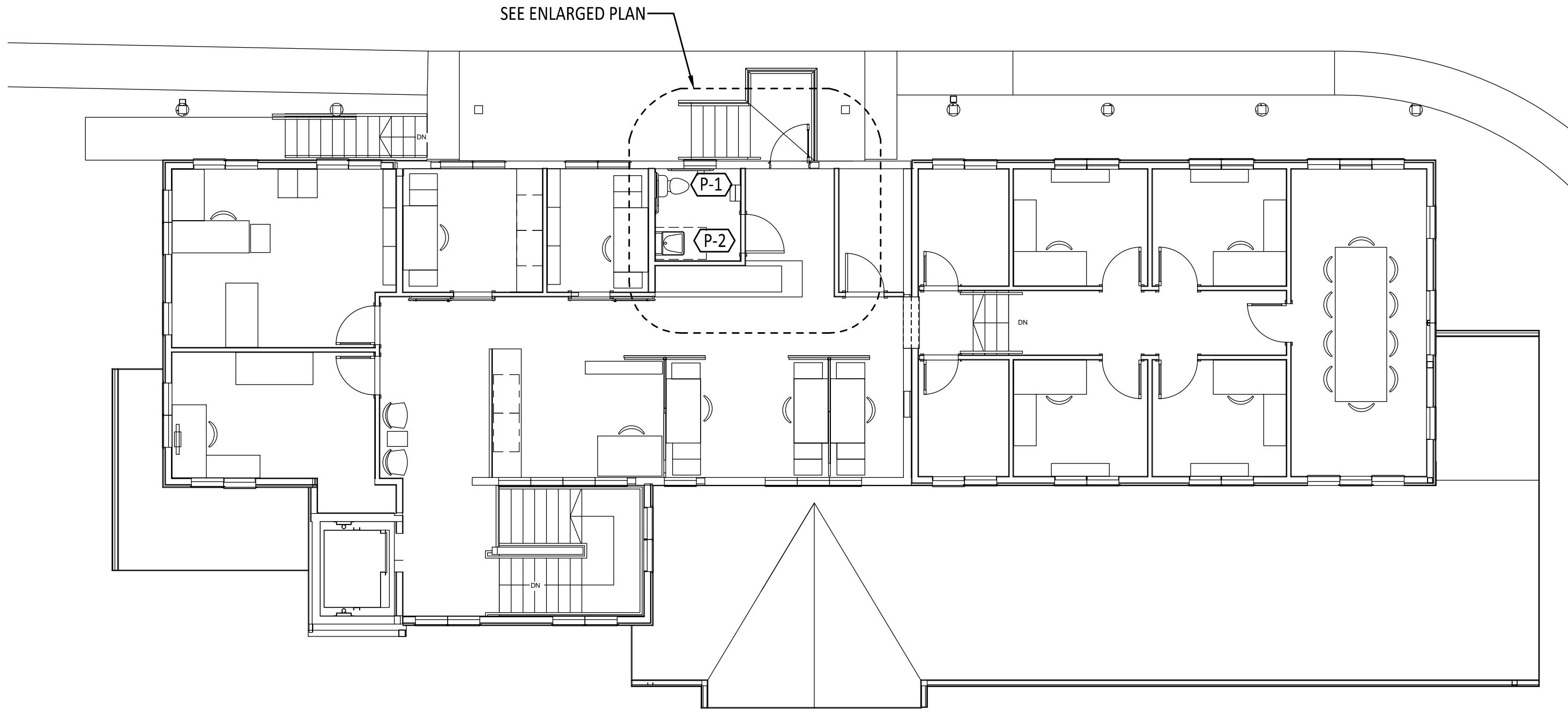
PLUMBING WASTE AND VENT PLAN: FIRST FLOOR ENLARGED
SCALE: 1/8" = 1'-0"



PLUMBING WASTE AND VENT PLAN: FIRST FLOOR OVERALL
SCALE: 1/8" = 1'-0"



PLUMBING WASTE AND VENT PLAN: SECOND FLOOR ENLARGED
SCALE: 1/8" = 1'-0"



PLUMBING WASTE AND VENT PLAN: SECOND FLOOR OVERALL
SCALE: 1/8" = 1'-0"

