

PROJ. NO: 2018-600

ISSUE DATE: 10/18/18

ISSUED FOR: CONSTRUCTION

REVISIONS:

NO	DATE	DESCRIPTION

DRAFTED BY:

APPROVED BY:

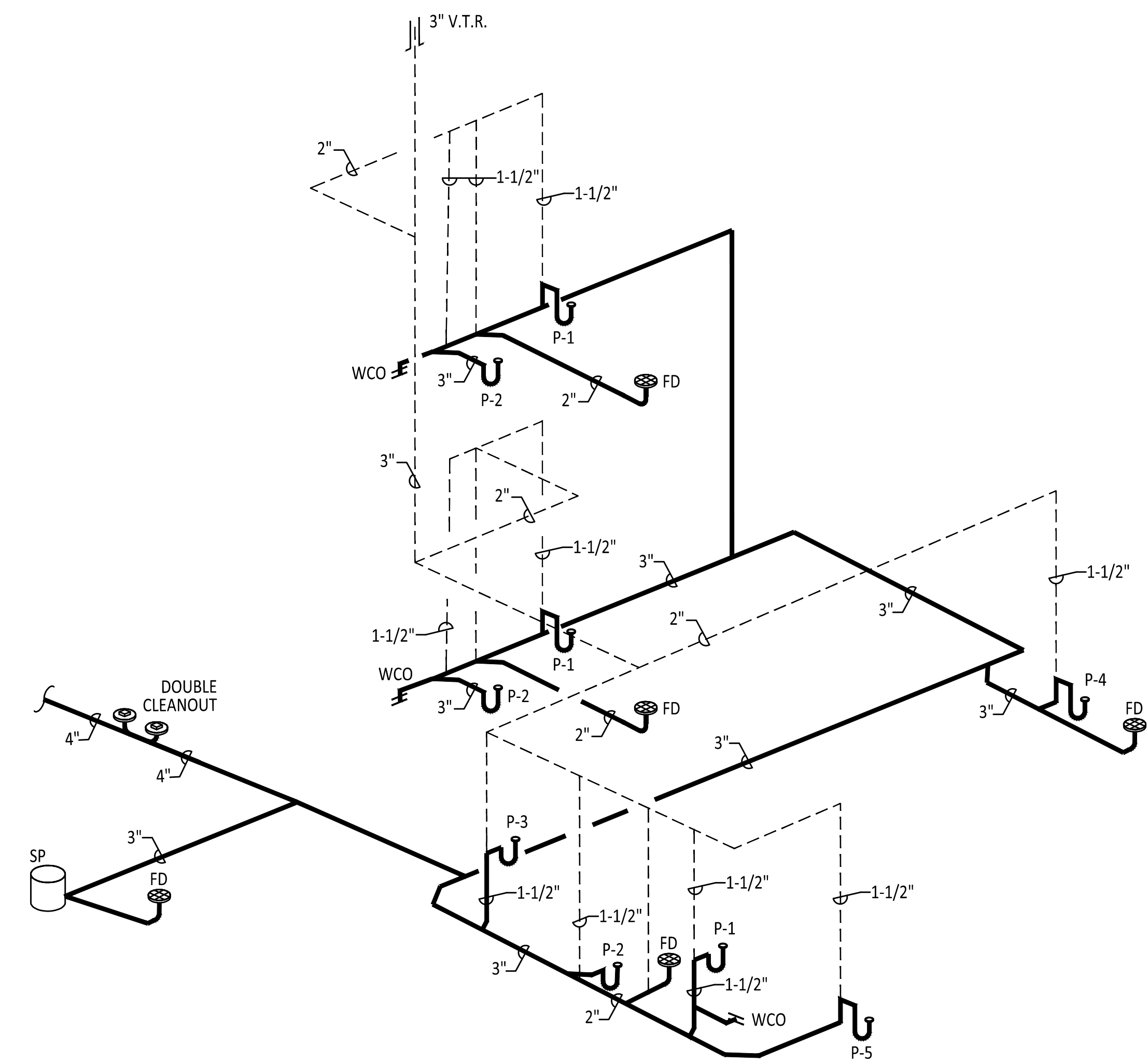
SCALE: As indicated

PLUMBING
DIAGRAMS &
SCHEDULES

P002

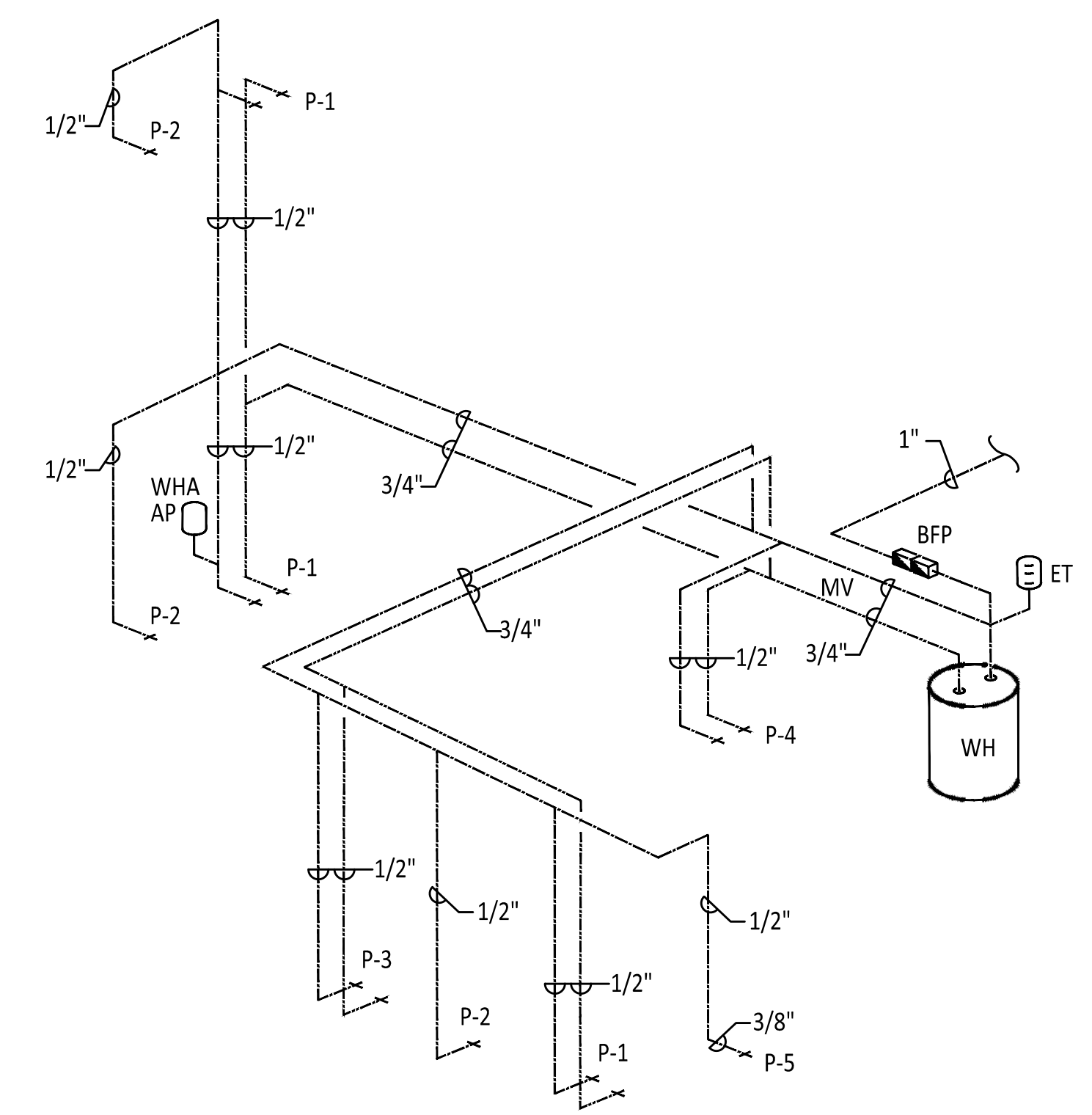
PLUMBING EQUIPMENT SCHEDULE:

- P-1 LAVATORY, COUNTERTOP, HANDICAPPED: SELF-RIMMING, VITREOUS CHINA OVAL COUNTERTOP LAVATORY WITH 4 IN. FAUCET CENTERS, WALL STOPS, AND INSULATED P-TRAP AND HOT WATER LINE. WALL STOPS SHALL HAVE THREADED INLET AND COMPRESSION OUTLET CONNECTIONS. FAUCET AND FITTINGS: FAUCET AND FITTINGS: "ZURN" NO. Z-6915-XL-L SENSOR OPERATED BATTERY OPERATED WITH MIXING VALVE, COVERPLATE, POLISHED CHROME GRID DRAIN, 3/8" O.D. COPPER SUPPLY TUBES, AND 0.5 GPM VANDAL-RESISTANT FLOW DEVICE. TRUEBRO 102W INSULATION FOR P-TRAP, OFFSET TAILPIECE AND HOT & COLD SUPPLIES. INSTALL PER ADA REQUIREMENTS. "AMERICAN STANDARD" AQUALYN NO. 0476.028 WASTE = 2 IN., VENT = 1-1/2 IN., CW & HW = 1/2 IN.
- P-2A WATER CLOSET, FLOOR-MOUNT, FLUSH VALVE, HANDICAPPED: WATER SAVING, 1.6 GPF, VITREOUS CHINA WATER CLOSET, WITH TOP SPUD, ELONGATED BOWL, SIPHON-JET FLUSHING ACTION, AND OPEN FRONT PLASTIC SEAT. COMPLETE WITH EXPOSED FLUSH VALVE BY "ZURN" NO. Z-6000XL-WS1, WITH ADA COMPLIANT HANDLE AND VACUUM BREAKER. INSTALL PER ADA REQUIREMENTS. FLUSH VALVE HANDLE SHALL BE ON WIDE SIDE OF WATER CLOSET. "AMERICAN STANDARD" MADERA NO. 2305.100 WASTE = 3 IN., VENT = 2 IN., CW = 1-1/2 IN.
- P-3A SINK, HANDICAPPED: STAINLESS STEEL TWO COMPARTMENT, SELF-RIMMING SINK, CONSTRUCTED OF 18 GAUGE TYPE 302 STAINLESS STEEL WITH HEAVY DUTY 'SOUND GUARD' UNDERCOATING, FOUR FAUCET HOLES ON 4 IN. CENTERS, INSULATED P-TRAP AND HOT WATER LINE, AND WALL STOPS. WALL STOPS SHALL HAVE THREADED INLET AND COMPRESSION OUTLET CONNECTIONS. DIMENSIONS: 33 IN. LONG X 22 IN. WIDE X 6-1/2 IN. DEEP WITH 1-3/4 IN. RADIUS COVED CORNERS AND 3-1/2 IN. OFF-CENTERED DRAIN OPENING. FAUCET AND FITTINGS: "ELKAY" NO. LK-4101 SINGLE-LEVER, DECK-MOUNT FAUCET WITH 8 IN. SWING SPOUT, 3/8" O.D. COPPER SUPPLY TUBES, RETRACTABLE SPRAY AND HOSE, AND 2.5 GPM FLOW DEVICE. PROVIDE WITH NO. LK-99 STAINLESS STEEL BASKET STRAINER WITH 1-1/2 IN. O.D. TAILPIECE, AND ALL ACCESSORIES FOR A COMPLETE INSTALLATION. INSTALL PER ADA REQUIREMENTS. [VERIFY MIN. 27 IN. KNEE CLEARANCE UNDERNEATH SINK] "ELKAY" NO. LRAD-3322 WASTE = 2 IN., VENT = 1-1/2 IN., CW & HW = 1/2 IN.
- P-4 24 IN. X 24 IN. X 12 IN. DEEP, ONE PIECE PRE-CAST TERRAZZO WITH STAINLESS STEEL CAPS ON ALL CURBS, 2 IN. THICK MINIMUM SHOULDERS, 3 IN. DRAIN CONNECTION, "CHICAGO FAUCET" NO. 835 SERVICE SINK FITTING WITH EXPOSED VALVES, RIGID SPOUT, VACUUM BREAKER, WALL BRACE, PAIL HOOK, AND 3/4 IN. HOSE THREAD. PROVIDE MOP HANGER NO. 889-CC. "FIAT" NO. TSB-100 WASTE = 3 IN., VENT = 1-1/2 IN., CW & HW = 3/4 IN.
- P-5 BOTTLE FILLER: WALL-MOUNTED, STAINLESS STEEL WITH BACK PANEL, SENSOR ACTIVATED, NON-REFRIGERATED, FILTER, FILTER MONITOR, ADA COMPLIANCE, AND ALL ITEMS NECESSARY FOR COMPLETE OPERATION. WALL STOPS SHALL HAVE THREADED INLET AND COMPRESSION OUTLET CONNECTIONS. PROVIDE MOUNTING FRAME AS REQUIRED BY MANUFACTURER. 120V/1PH/60HZ "ELKAY" EZH20 WASTE = 2 IN., VENT = 1-1/2 IN., CW = 1/2 IN.
- WH WATER HEATER: NATURAL GAS FIRED, CONDENSING DOMESTIC HOT WATER HEATER WITH A 50 GALLON STORAGE TANK, WORKING PRESSURE RATING OF 150 PSI, GRAVITY VENT, FACTORY-INSTALLED TEMPERATURE AND PRESSURE RELIEF VALVE, POLYURETHANE FOAM INSULATION, TANK INSPECTION PORT, VENT CONDENSATE DRAIN WITH ACID NEUTRALIZER SIDE TAPS FOR RADIANT HEATING CONNECTION, AND DRAIN VALVE. INPUT: ____ MBH, ORIFICED FOR OPERATION AT 9.500FT. A.S.L. INPUT MBH = 200, 253GPH RECOVERY AT 90°F RISE, 120V, 1PH, 60HZ, 7A, 180LBS, 3"Ø VENT CONCENTRIC KIT, 1" OUTLET/INLET/TAP. "POLARIS" PGC3501993NV
- SP SUMP PUMP: INTEGRAL 5 GALLON POLYPROPYLENE CONSTRUCTION SUMP CONTAINER, ONE PIECE GAS TIGHT COVER WITH 2" VENT AND 2" DISCHARGE, 1/3 HP PUMP CAST IRON AND THERMOPLASTIC CONSTRUCTION, 8 FT. POWER CORD, SWITCH, AND ALL EQUIPMENT FOR COMPLETE OPERATION. 25 GPM AT 15 FT.OF HEAD. ELEC: 115V/1PH/60 HZ "MYERS" NO. USA-33 WITH CONTAINER
- FCO FINISH FLOOR CLEANOUT: CAST IRON CLEANOUT WITH THREADED ADJUSTABLE HOUSING, SV HUB OUTLET, FLANGED FERRULE WITH PLUG ROUND SCORRIATED CAST IRON, SATIN BRONZE TRACTOR TOP. SEE PLANS FOR SIZES. "ZURN" NO. Z-1400-VP WASTE = (SEE PLANS)
- WCO WALL CLEANOUT: BRASS PLUG WITH ROUND STAINLESS STEEL SECURED ACCESS COVER. "ZURN" NO. Z-1468-VP WASTE = (SEE PLANS)
- DCO DOUBLE CLEANOUT: INSTALL DOUBLE CLEANOUT FITTING PER 2015 UPC AND DETAIL THIS SHEET.
- BFP REDUCED PRESSURE BACKFLOW PREVENTER: DOUBLE CHECK VALVE AND REDUCE PRESSURE ASSEMBLY SELECTED AND PROVIDED BY CONTRACTOR IN COORDINATION WITH OWNER. PROVIDE WITH STRAINER, SHUTOFF VALVES, UNIONS, INTERNAL RELIEF VALVE, BRONZE CONSTRUCTION, AND ALL EQUIPMENT FOR A COMPLETE OPERATION. "WATTS" SIZE: PIPE SIZE = 1 IN.
- ET EXPANSION TANK: PRE-PRESSURIZED, DIAPHRAGM TYPE EXPANSION TANK FOR POTABLE, OPEN, HOT WATER SYSTEMS. TOTAL TANK VOLUME OF 2 GALLONS; MAXIMUM ACCEPTANCE FACTOR OF 0.45; OPERATING TEMPERATURE OF 200 DEG. F. "AMTROL" THERM-X-TROL ST-12
- PRV PRESSURE REDUCING VALVE: A.S.S.E. NO. 1003 AND CSA B356 COMPLIANCE. BRONZE BODY CONSTRUCTION WITH RENEWABLE STAINLESS STEEL SEAT, STAINLESS STEEL INTEGRAL STRAINER SCREEN, REINFORCES DIAPHRAGM AND BUNA 'N' VALVE DISC. "WATTS" NO. 223. SIZE: 1 IN.
- WHA WATER HAMMER ARRESTOR: WATER HAMMER ARRESTOR WITH NESTING TYPE BELLOWS CONTAINED WITHIN CASING HAVING SUFFICIENT DISPLACEMENT VOLUME TO DISSIPATE THE CALCULATED KINETIC ENERGY GENERATED IN THE PIPING SYSTEM. BOTH CASING AND BELLOWS ARE CONSTRUCTED OF 18-8 STAINLESS STEEL. SIZE AND LOCATE IN ACCESSIBLE LOCATION PER MANUFACTURER'S GUIDELINES. "ZURN" NO. Z-1700, SIZE: BY CONTRACTOR, PER FIXTURE UNIT COUNT
- AP ACCESS PANEL: PROVIDE AND INSTALL CEILING OR WALL MOUNTED ACCESS PANEL, FOR WALL OR CEILING TYPE SPECIFIED, WHERE REQUIRED FOR ACCESS TO VALVES AND WATER HAMMER ARRESTORS IN PLUMBING WALLS OR ABOVE HARD CEILINGS. PROVIDE WITH KEY OPERATED CAM LATCH. SIZE: 12 IN. X 12 IN. PROVIDE TWO (2) SETS OF KEYS TO OWNER. "ACUDOR"
- MV MIXING VALVE: THERMOSTATIC MIXING VALVE WITH 0.5GPM MIN. FLOW RATING, 1" INLET, STAINLESS STEEL INTERNAL PARTS, BRONZE BODY, DIAL THERMOMETER, TEST CONNECTION, INTEGRAL CHECK STOPS WITH STRAINERS AND WALL SUPPORT, 125 PSI OPERATING PRESSURE, COPPER THERMOSTATIC ELEMENT, LOCKING TEMPERATURE REGULATING HANDLE, 90-140°F ADJUSTMENT RANGE, AND ALL COMPONENTS NECESSARY FOR COMPLETE INSTALLATION. "LEONARD" XL0690-LF-DT



WASTE AND VENT RISER DIAGRAM

SCALE: N.T.S.



DOMESTIC WATER RISER DIAGRAM

SCALE: N.T.S.



TIPTON ENGINEERING
427 LUISA PLACE
SANTA FE, NM 87505
KARLT@TIPTONENGINEERING.CO
WWW.TIPTONENGINEERING.CO

MD	PD	ED	PM
PROJECT #:			