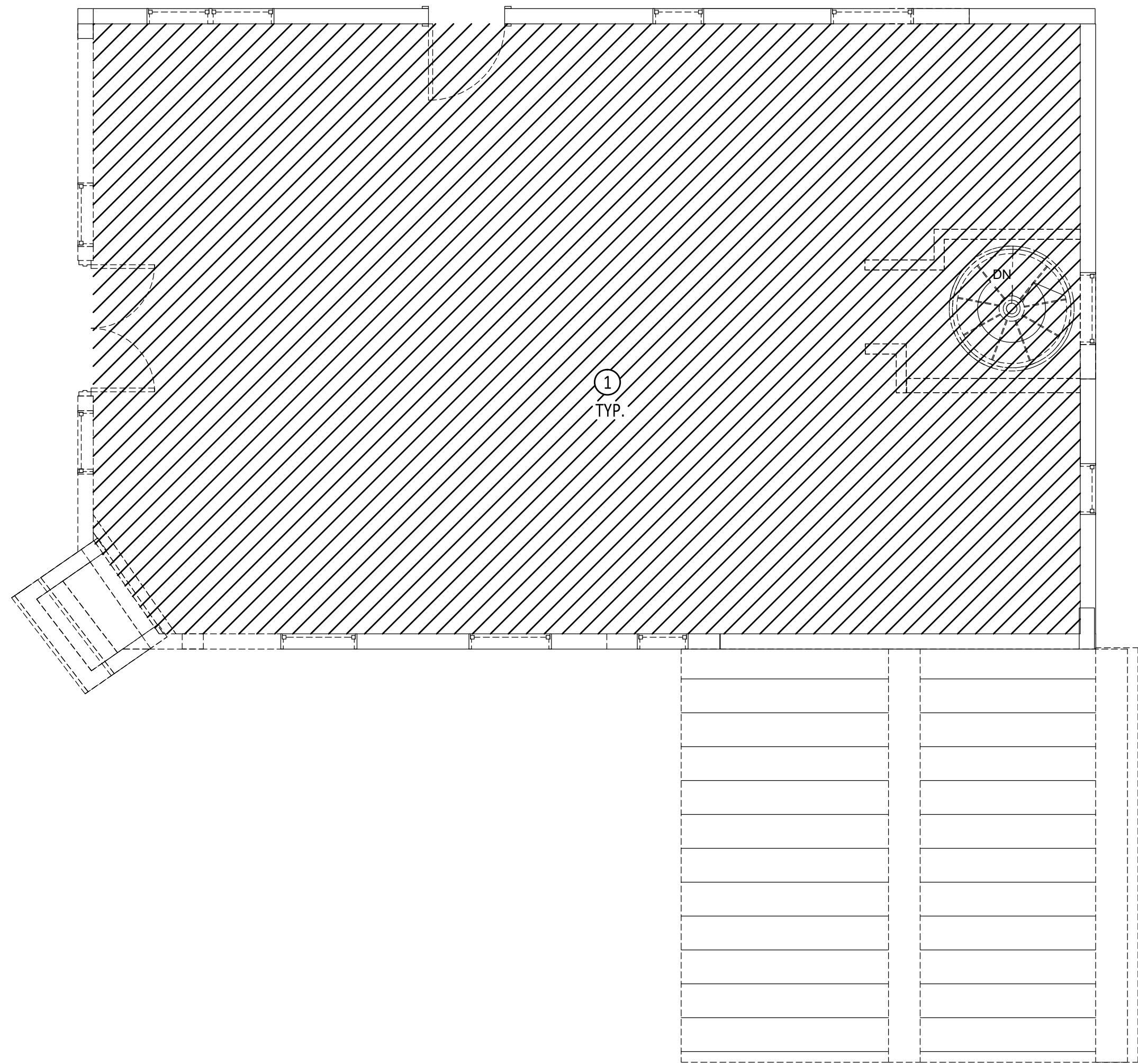


GENERAL SHEET NOTES:

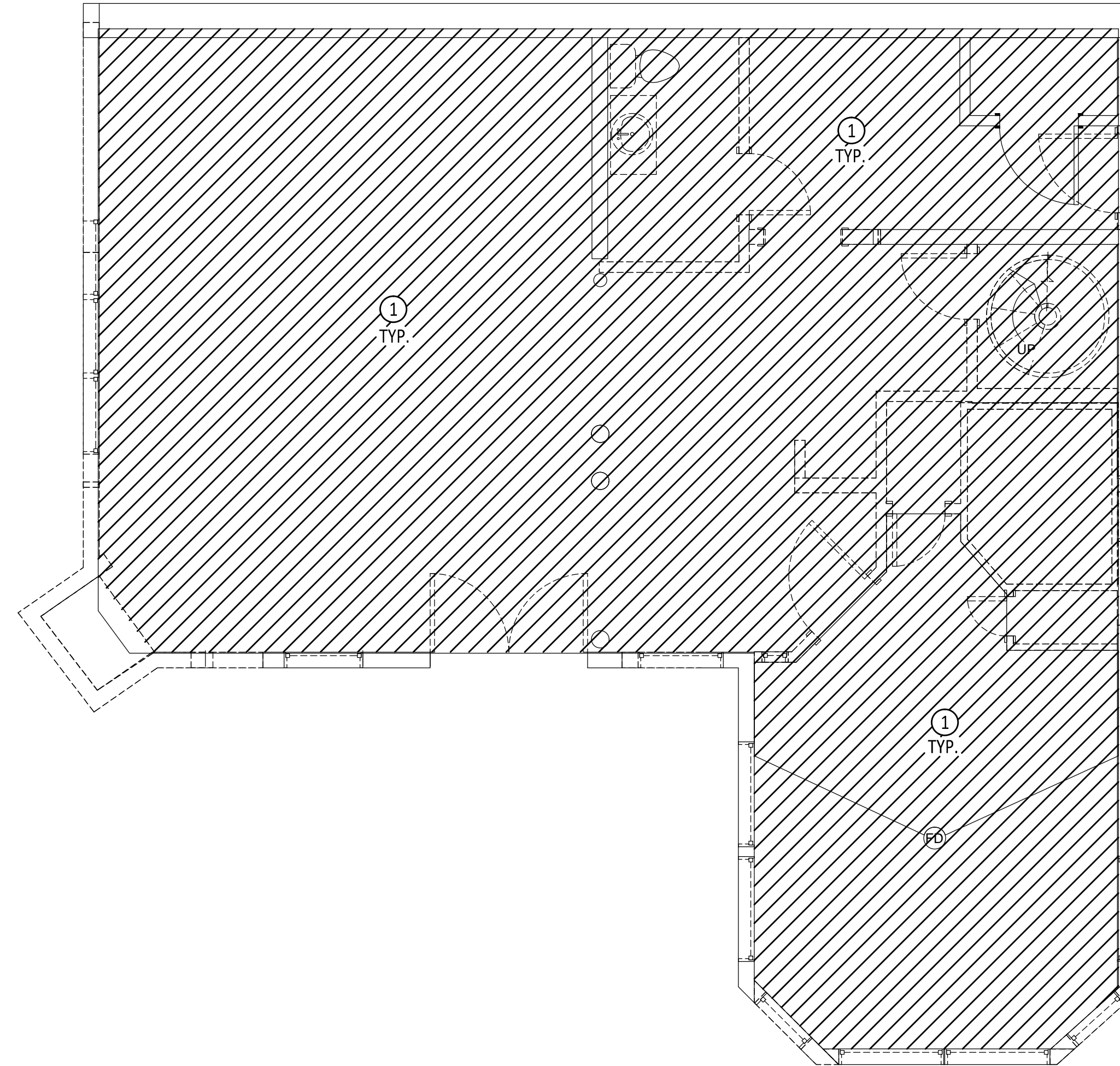
- A. BECOME FAMILIAR WITH THE EXISTING CONDITIONS PRIOR SUBMITTING A COMPLETE BID WITHIN THE SCOPE OF THE PLANS AND SPECIFICATIONS. WHEN UNCLEAR, VERIFY THE EXTENT OF REMOVALS PRIOR TO BID. PRIOR TO THE CONCLUSION OF THE ADDENDUM PERIOD IN THE BIDDING TIME FRAME, BRING TO THE ATTENTION OF THE ENGINEER ANY QUESTIONS IN REGARD TO THE EXTENT OF WORK OR ANY OTHER ISSUE RELATING TO THIS PROJECT. WITHOUT ANY CLARIFICATION BEYOND THESE AND THE BID DOCUMENTS, THE SUBMITTAL OF A BID WARRANTS THAT THE BIDDER FULLY UNDERSTANDS THE SCOPE.
- B. REMOVE ALL EXISTING MATERIAL AND EQUIPMENT INDICATED AND SALVAGE TO THE OWNER. THE OWNER SHALL HAVE FIRST RIGHTS TO ALL EQUIPMENT TO BE REMOVED. DISPOSE OF ALL EQUIPMENT AND MATERIAL THAT IS NOT WANTED BY OWNER IN AN APPROVED MANNER PER THE LOCAL DICTATING AUTHORITY.
- C. WHEN THE EXTENT OF REMOVAL IS UNCLEAR, REQUEST CLARIFICATION FROM ENGINEER PRIOR TO COMMENCING WORK.
- D. WHEN MECHANICAL SYSTEMS ARE BEING REMODELED, COVER AND SEAL OPENINGS IN DUCTWORK, PIPING, OR MECHANICAL EQUIPMENT TO REMAIN IN OPERATION THROUGH REMAINDER OF PROJECT.
- E. WHEN NOTES CALL FOR "DISCONNECT AND REMOVE" MECHANICAL EQUIPMENT, COORDINATE WITH ELECTRICAL SUBCONTRACTOR TO REMOVE ALL ASSOCIATED WIRE AND EXPOSED CONDUIT TO SOURCE. COORDINATE WITH ELECTRICAL SUBCONTRACTOR FOR THE RE-USE OF EXISTING CONDUITS AND/OR CONDUCTORS WHERE FEASIBLE PROVIDING THAT THEY ARE IN GOOD CONDITION AND COMPLY WITH CURRENT CODES AND STANDARDS.
- F. REPAIR ALL DAMAGE TO WALLS, CEILING, ETC. IN A WORKMANLIKE MANNER. SEAL ALL WALL AND CEILING OPENINGS WITH MATCHING MATERIAL.
- G. THE LOCATIONS OF EQUIPMENT SHOWN ON THE DRAWINGS IS BASED ON SITE OBSERVATIONS AND THE BEST AVAILABLE INFORMATION AT THE TIME OF DRAWING PREPARATION AND SOME DISCREPANCIES MAY EXIST. VERIFY THE EXACT LOCATIONS OF EQUIPMENT TO BE REMOVED IN THE FIELD AND REQUEST CLARIFICATION FROM ENGINEER WHEN EQUIPMENT LOCATION OR EXISTENCE DIFFERS FROM PLANS.

KEYED NOTES: ○

- 1. REMOVE ALL EXISTING MECHANICAL HEATING EQUIPMENT FROM EXISTING BUILDING. PERMANENTLY CAP EXISTING BELOW SLAB PIPING. ALL NON-ACCESSIBLE PIPING TO BE ABANDONED IN PLACE.



MECHANICAL DEMOLITION PLAN: SECOND FLOOR
SCALE: 1/4" = 1'-0"



MECHANICAL DEMOLITION PLAN: GROUND FLOOR
SCALE: 1/4" = 1'-0"

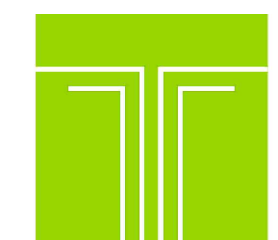
PROJ. NO:	2018-600
ISSUE DATE:	10/18/18
ISSUED FOR:	CONSTRUCTION

NO	DATE	DESCRIPTION

DRAFTED BY:
APPROVED BY:
SCALE: As indicated

**MECHANICAL
DEMOLITION
PLAN**

MD101



TIPTON ENGINEERING
427 LUISA PLACE
SANTA FE, NM 87505
KARLT@TIPTONENGINEERING.CO
WWW.TIPTONENGINEERING.CO

MD	PD	ED	PM
PROJECT #:			

THIS DESIGN IS CONFIDENTIAL AND PROPRIETARY OF LIVING DESIGNS GROUP