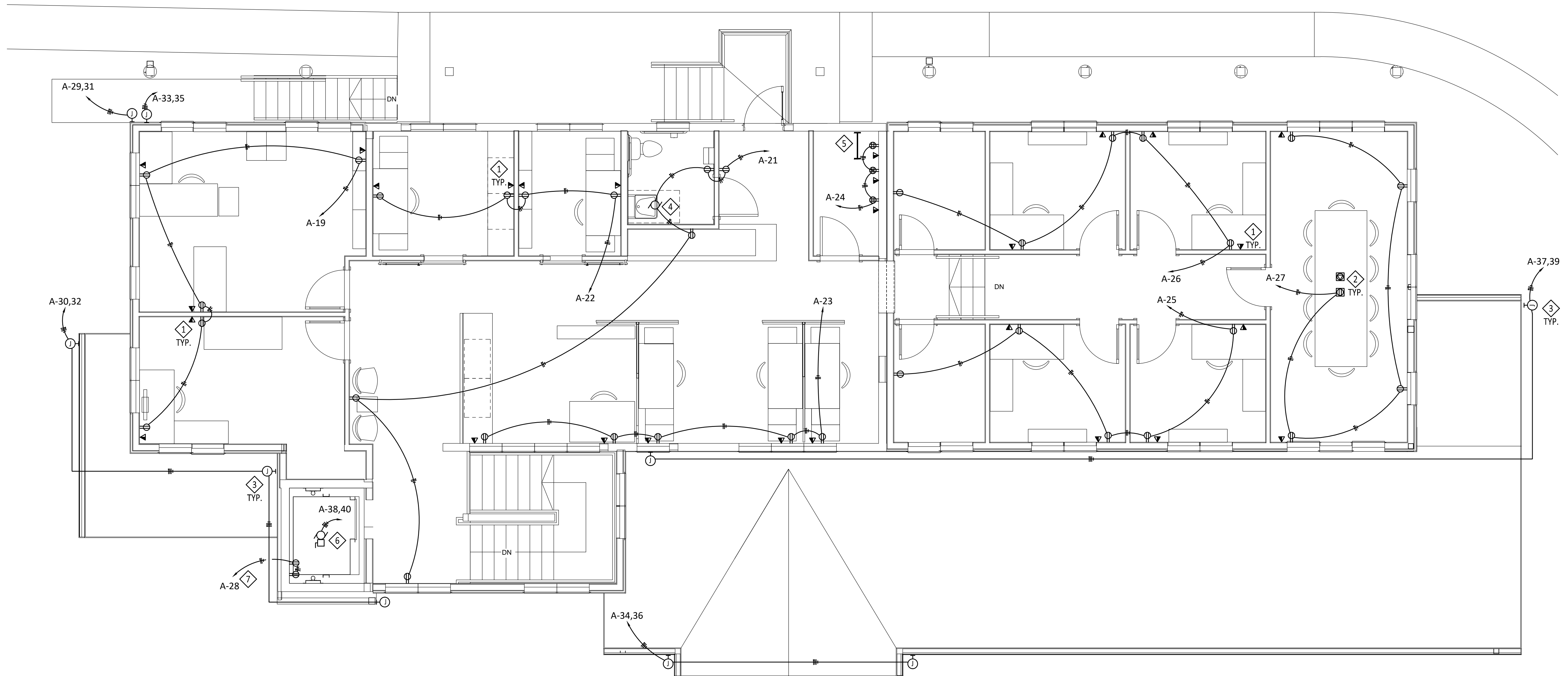


GENERAL SHEET NOTES:

- A. SEE TECHNICAL SPECIFICATIONS FOR ADDITIONAL REQUIREMENTS.
- B. ALL DATA WIRING TO BE CAT6 TYPE. COORDINATE WITH VTSV IT.

KEYED NOTES:

1. INSTALL DATA DEVICE WITH 3/4" CONDUIT FROM DEVICE UP TO CEILING SPACE. SEE "TELEPHONE/DATA DEVICE FACEPLATE" DETAIL. PROVIDE ALL DATA/TELEPHONE WIRE FACEPLATE AND JACK DEVICES.
2. PROVIDE AND INSTALL "LEGRAND" MODEL 6ATC2P WITH DUPLEX RECP. AND 4 CAT6 DATA PORTS. COORDINATE RING TYPE AND COLOR WITH ARCHITECT.
3. INSTALL NEMA3R JUNCTION BOX WITH NON-FUSED, 240V, 20A DISCONNECT FOR CONNECTION OF SNOW MELT HEAT TAPE. COORDINATE WITH VTSV AND ARCH. FOR HEAT TAPE LAYOUT.
4. CONNECT RESTROOM EXHAUST FAN TO LIGHTING SWITCH CONTROL. COORDINATE WITH MECH. CONTRACTOR.
5. INSTALL TELEPHONE BOARD PER "TELEPHONE BOARD" DETAIL. COORDINATE LOCATION WITH OWNER PRIOR TO INSTALL..
6. PROVIDE 200A, 240V, FUSED DISCONNECT IN ELEVATOR PIT FOR POWER UN IT. FEED FROM PANEL "A" WITH 3-#3/OCU IN 2" CONDUIT. COORDINATE ALL REQUIREMENTS WITH ELEVATOR MANUFACTURER.
7. INSTALL WP DUPLEX RECEPTACLES FOR ELEVATOR PIT SUMP PUMP AND CONTROLLER PER NEC.



ELECTRICAL POWER AND SPECIAL SYSTEMS PLAN: SECOND FLOOR
SCALE: 1/4" = 1'-0"

VTSV ADMINISTRATION BUILDING

DESIGN DEVELOPMENT

1346 NM 150, VILLAGE OF TAOS SKI VALLEY, NM 87525

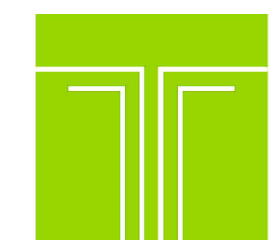
PROJ. NO.: 2018-600
ISSUE DATE: 10/18/18
ISSUED FOR: CONSTRUCTION

NO.	DATE	DESCRIPTION

DRAFTED BY:
APPROVED BY:
SCALE: As indicated

ELECTRICAL POWER AND SPECIAL SYSTEMS PLAN

E104



TIPTON ENGINEERING
427 LUISA PLACE
SANTA FE, NM 87505
KARLT@TIPTONENGINEERING.CO
WWW.TIPTONENGINEERING.CO

MD	PD	ED	PM

PROJECT #: