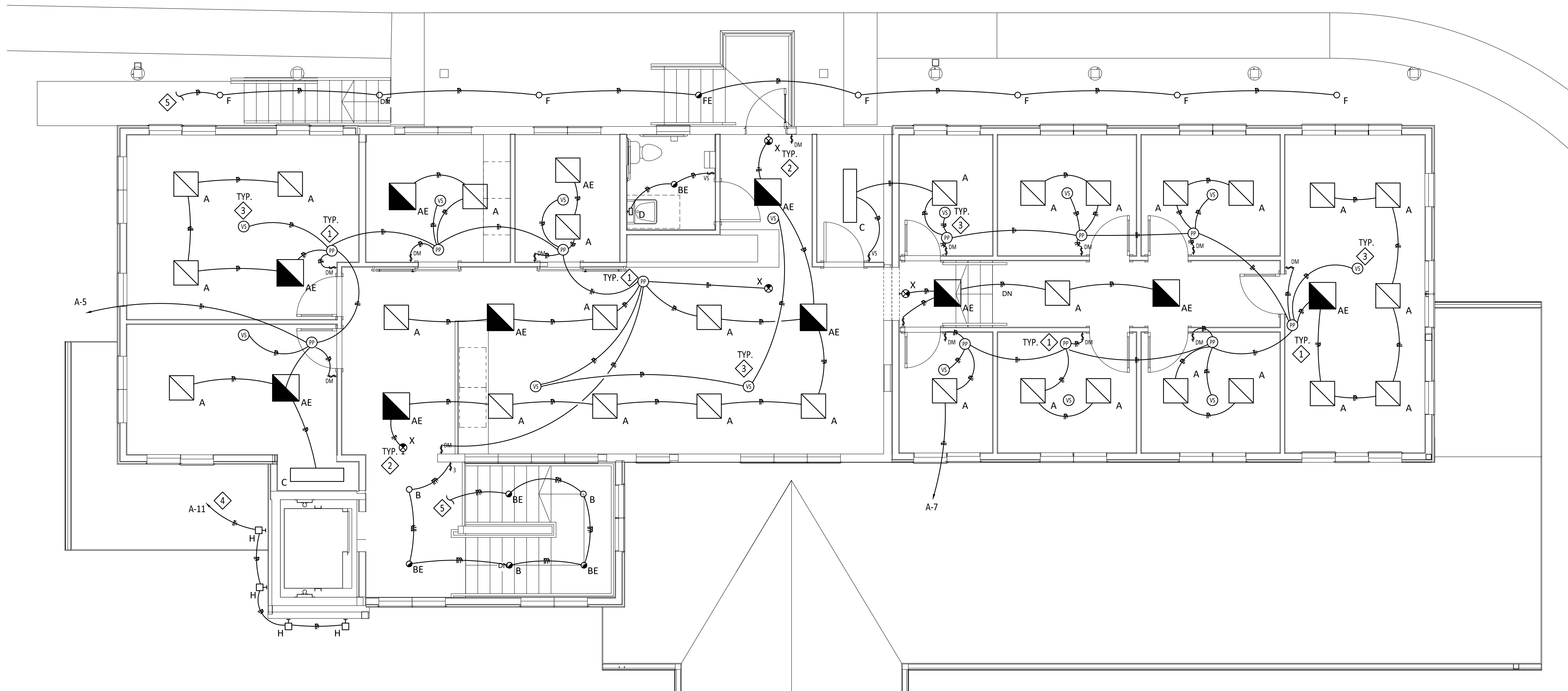


GENERAL SHEET NOTES:

A. ALL LOW VOLTAGE LIGHTING DEVICES TO BE CONNECTED WITH CAT5E CABLE PER MANUFACTURER REQUIREMENTS. PROVIDE 3/4" CONDUIT FOR CAT5E WIRE IN ALL EXPOSED LOCATIONS.

KEYED NOTES: ◇

1. INSTALL POWER PACK UNIT ABOVE CEILING AT LOCATION SHOWN. ROUTE SWITCHING CIRCUITS AS INDICATED AND PROGRAM SYSTEM FOR INDIVIDUAL CONTROL OF EACH SWITCH CIRCUIT BY DEVICE OR DEVICES IN SPACE.
2. CONNECT EMERGENCY AND EXIT LIGHT FIXTURE TO UNSWITCHED POWER CIRCUIT.
3. INSTALL OCCUPANCY/VACANCY SENSOR ON CEILING PER MANUFACTURER REQUIREMENTS. DAISY CHAIN DEVICES WHERE INDICATED. FIELD COORDINATE FINAL LOCATIONS.
4. CONNECT EXTERIOR LIGHTING TO CHANNEL 1 OF TIME CLOCK. SEE "TIME CLOCK DETAIL".
5. CONNECT SECOND FLOOR COMMON AREA LIGHT FIXTURES TO FIRST FLOOR COMMON AREA CIRCUIT INDICATED.



ELECTRICAL LIGHTING PLAN: SECOND FLOOR
SCALE: 1/4" = 1'-0"

VTSV ADMINISTRATION BUILDING

DESIGN DEVELOPMENT

1346 NM 150, VILLAGE OF TAOS SKI VALLEY, NM 87525

PROJ. NO.: 2018-600

ISSUE DATE: 10/18/18

ISSUED FOR: CONSTRUCTION

REVISIONS:

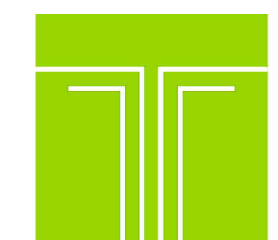
NO	DATE	DESCRIPTION

DRAFTED BY:
APPROVED BY:

SCALE: As indicated

ELECTRICAL
LIGHTING PLAN

E102



TIPTON ENGINEERING
427 LUISA PLACE
SANTA FE, NM 87505
KARLT@TIPTONENGINEERING.CO
WWW.TIPTONENGINEERING.CO

MD	PD	ED	PM
PROJECT #:			