

THIS DESIGN IS CONFIDENTIAL AND PROPRIETARY OF LDG, INC. NO REUSE OR REPRODUCTION IS PERMITTED WITHOUT WRITTEN PERMISSION.

VTSV ADMINISTRATION BUILDING

CONSTRUCTION DOCUMENTS

1346 NM 150, VILLAGE OF TAOS SKI VALLEY, NM 87525

PROJ. NO: 2018-600
ISSUE DATE: 10/18/18
ISSUED FOR:

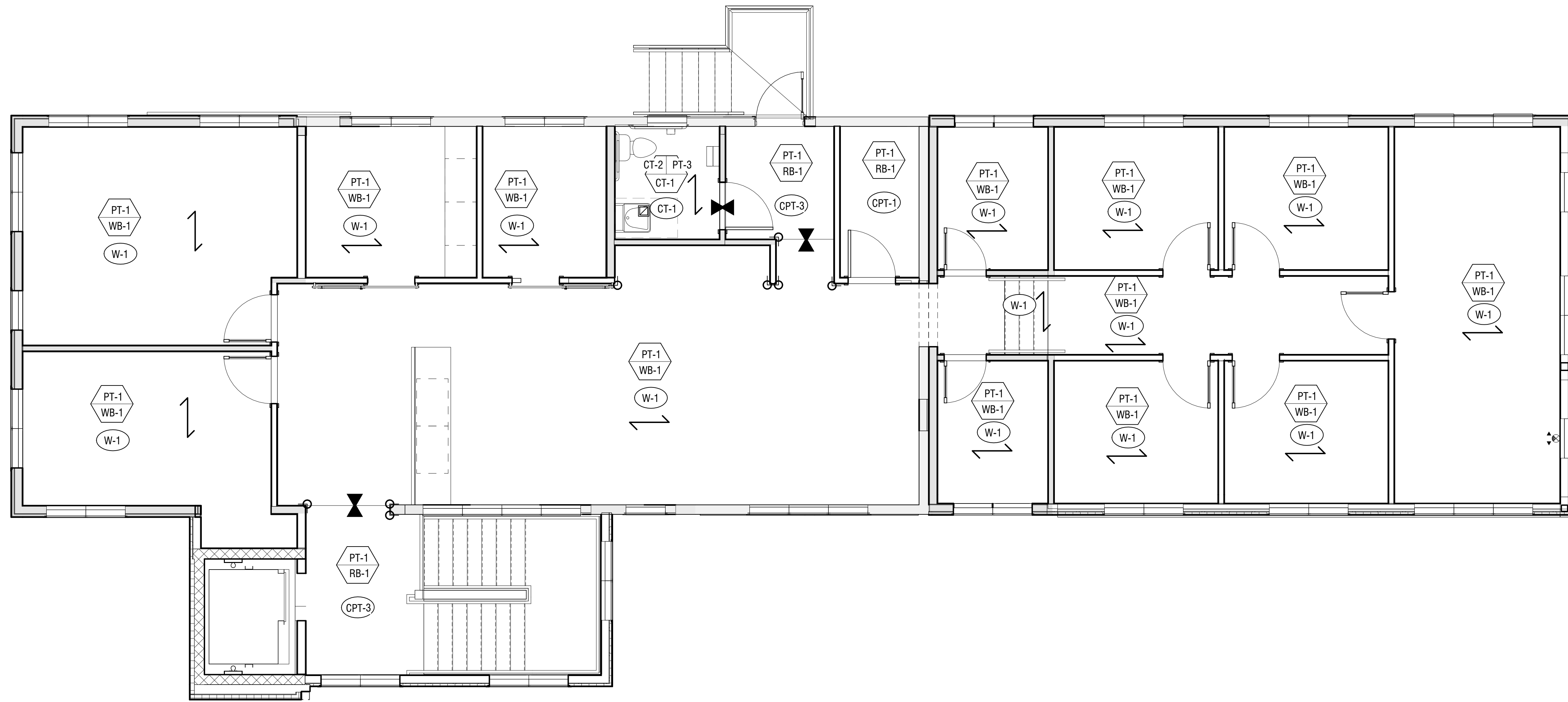
NO	DATE	DESCRIPTION

DRAFTED BY: LDG
APPROVED BY: LDG

SCALE: As indicated

**PROPOSED
SECOND
FLOOR FINISH
PLAN
A-702**

GENERAL NOTES	FINISH SCHEDULE				LEGEND		
<ol style="list-style-type: none"> CEILING TO BE PAINTED SAME AS WALLS UNLESS NOTED OTHERWISE TRANSITIONS TO OCCUR AT CENTERLINE OF DOOR U.N.O. AT BARN DOORS, TRANSITION TO OCCUR AT CENTERLINE OF WALL. CONTRACTOR TO PROVIDE APPROPRIATE TRANSITION MATERIAL AT ALL LOCATIONS WOOD STAIRS TO RECEIVE TREADS AND RISERS TO MATCH FLOORING. PROVIDE 1.25" RADIUS BULLNOSE AT TREAD NOSING. ALL CERAMIC WALL TILE (CT-2) LOCATIONS TO RECEIVE 5/8" CEMENTITIOUS BACKER BOARD. 	RESILIENT FLOORING BASE & ACCESSORIES (RB-X) RB-1 MFG. JOHNSONITE PRODUCT/STYLE COVED/SMOOTH COLOR TBD MODEL TBD SIZE 4" CG-1 MFG. JOHNSONITE PRODUCT/STYLE VBG-XX-B COLOR TBD MODEL TBD SIZE 3/4"x4" WOOD FLOORING & ACCESSORIES (WF-X), (WB-X) WF-1 MFG. TBD PRODUCT/STYLE T&G HARDWOOD FLOORING COLOR PRE-FINISHED CLEAR SEALER MODEL WHITE OAK SIZE 3/4"x6" NOTES WB-1 MFG. TBD PRODUCT/STYLE 4/4" SQUARE COLOR WS-1 MODEL SIZE 4" NOTES PRE-FINISHED WOOD BASE TO MATCH FLOORING	CARPET (CPT-X) CPT-1 MFG. TANDUS CENTIVA PRODUCT/STYLE ANILINE #04733 COLOR TBD SIZE 24"x24" NOTES INSTALLATION PATTERN TBD CPT-2 MFG. TANDUS CENTIVA PRODUCT/STYLE ELYSIAN #11141 COLOR TBD SIZE 24"x24" NOTES INSTALLATION PATTERN TBD CPT-3 MFG. TANDUS CENTIVA PRODUCT/STYLE ASSERTIVE STRIA #04839 COLOR TBD SIZE 24"x24" NOTES INSTALLATION PATTERN TBD CERAMIC TILE (CT-X) CT-1 MFG. DALTILE PRODUCT/STYLE LINDEN POINT COLOR GRIGIO LP2 SIZE 12"x24" NOTES RESTROOM FLOOR TILE AND BASE CT-2 MFG. DALTILE PRODUCT/STYLE LINDEN POINT COLOR GRIGIO LP2 SIZE 12"x24" SHEET, 2"x2" TILE NOTES RESTROOM WALL TILE	ALUMINUM TILE TRIM (TT-X) TT-1 MFG. SCHLUTER PRODUCT/STYLE SCHEINE COLOR SATIN ANODIZED ALUMINUM SIZE NOTES HORIZONTAL AND VERTICAL TERMINATION OF CT-2 TT-2 MFG. SCHLUTER PRODUCT/STYLE DILEK COLOR SATIN ANODIZED ALUMINUM SIZE NOTES FLOOR AND BASE TILE TRANSITION	SOLID SURFACE (SS-X) SS-1 MFG. WILSONART PRODUCT/STYLE QUARTZ COLOR MARBLE FALLS SIZE 3CM T NOTES COUNTERTOP IN BREAKROOM PLASTIC LAMINATE (PL-X) PL-1 MFG. WILSONART PRODUCT/STYLE HIGH PRESSURE LAMINATE COLOR TBD SIZE 3/4"T NOTES CAB FRONTS IN BREAKROOM PL-2 MFG. WILSONART PRODUCT/STYLE HIGH PRESSURE LAMINATE COLOR TBD SIZE 3/4"T NOTES CAB FRONTS IN RECEPTION AND PUBLIC WORKS PL-3 MFG. WILSONART PRODUCT/STYLE HIGH PRESSURE LAMINATE COLOR TBD SIZE 3/4"T NOTES COUNTERTOPS IN RECEPTION AND PUBLIC WORKS	PAINTING (PT-X) PT-1 MFG. DUNN EDWARDS PRODUCT/STYLE ANTIQUE LINEN COLOR VELVET FINISH FIELD COLOR NOTES PT-2 MFG. DUNN EDWARDS PRODUCT/STYLE TBD COLOR EGG SHELL FINISH HOLLOW METAL FRAMES NOTES PT-3 MFG. DUNN EDWARDS PRODUCT/STYLE ANTIQUE LINEN COLOR EGG SHELL FINISH RESTROOMS AND BREAKROOM NOTES WS-1 MFG. MINWAX PRODUCT/STYLE POLYSHADES COLOR TBD FINISH SATIN NOTES WINDOWS AND SILLS, EXTERIOR DOORS	PAINTING (P-X) CONT. WS-2 MFG. MINWAX PRODUCT/STYLE WATERBASED WOOD STAIN COLOR WHITE WASH PICKLING STAIN FINISH SATIN NOTES RECEPTION EXISTING CEILING, VIGAS, BEAMS AND COLUMNS, NEW BEAMS AND COLUMNS. SEAL WITH SATIN WATER BASED POLYURETHANE SC-1 MFG. SCOFIELD PRODUCT/STYLE CEMENTONE COLOR CLEAR FINISH SATIN NOTES	XX XX-X INDICATES EXTENTS OF WALL FINISH INDICATES WALL BASE TYPE X-X FLOOR FINISH CODE CORNER GUARDS (CG-1) FLOOR MATERIAL TRANSITION FLOOR MATERIAL DIRECTION



PROPOSED SECOND FLOOR FINISH
PLAN
1/4" = 1'-0"

Z:\010 ACTIVE PROJECTS\2018-600 VTSV Admin\09 CAD\09-2018-600 - VTSV Admin BID SET - JB LOCAL 10.12.18.rvt