

THIS DESIGN IS CONFIDENTIAL AND PROPRIETARY OF LDG. NO REUSE OR REPRODUCTION IS PERMITTED WITHOUT WRITTEN PERMISSION.

VTSV ADMINISTRATION BUILDING

CONSTRUCTION DOCUMENTS

1346 NM 150, VILLAGE OF TAOS SKI VALLEY, NM 87525

PROJ. NO: 2018-600
ISSUE DATE: 10/18/18
ISSUED FOR:

REVISIONS:
NO. DATE DESCRIPTION

DRAFTED BY: LDG
APPROVED BY: LDG

SCALE: As indicated

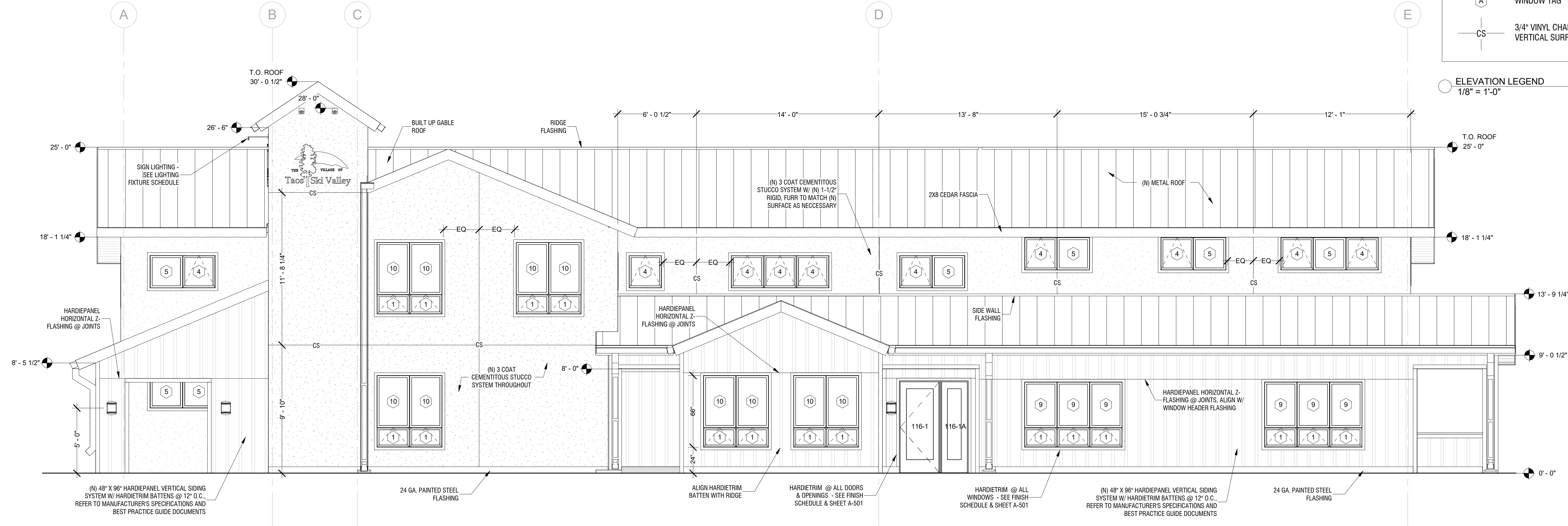
**PROPOSED
ELEVATIONS**

A-201

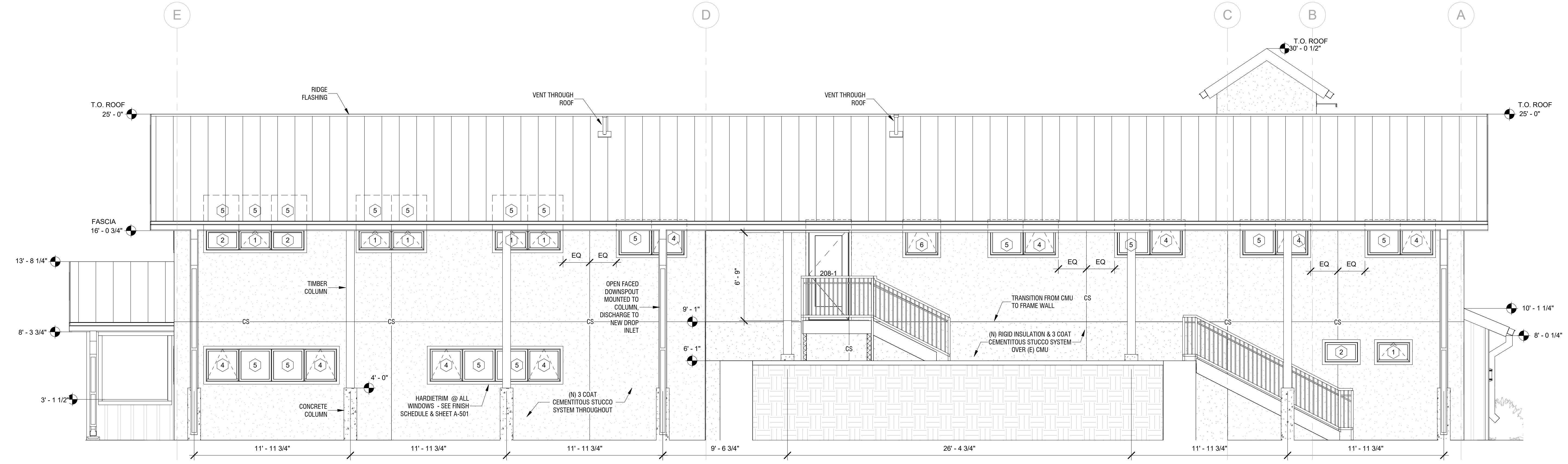
SIDING NOTES:			
CEMENT FIBER SIDING:		TRIM2:	
SIDING:	MFG. JAMES HARDIE	MFG. JAMES HARDIE	
	PRODUCT/STYLE HARDIPANEL HZ5	PRODUCT/STYLE HARDITRIM HZ5	
	COLOR BOOTHBAY BLUE COLORPLUS	COLOR MONTEREY TAUPE COLORPLUS	
	MODEL SELECT-CEDARMILL	MODEL RUSTIC GRAIN BATTEN BOARDS	
	SIZE 4W	SIZE 2.5"	
	NOTES	NOTES WINDOW CASING, 1/2 CORNER TRIM	
TRIM1:		BATTENS:	
	MFG. JAMES HARDIE	MFG. JAMES HARDIE	
	PRODUCT/STYLE HARDITRIM HZ5	PRODUCT/STYLE HARDITRIM HZ5	
	COLOR MONTEREY TAUPE COLORPLUS	COLOR BOOTHBAY BLUE COLORPLUS	
	MODEL 4/4 RUSTIC	MODEL RUSTIC GRAIN BATTEN BOARDS	
	SIZE 3.5"	SIZE 2.5"	
	NOTES 1/2 CORNER TRIM	NOTES PANEL BATTENS	

ELEVATION LEGEND
1/8" = 1'-0"

- FASCIA
- SPOT ELEVATION
- HARDIPANEL W/ BATTENS
- CEMENTITIOUS STUCCO SYSTEM
- WINDOW TAG
- 3/4" VINYL CHANNEL SCREED, 144 SO FT @ VERTICAL SURFACES



B2 SOUTH PROPOSED
1/4" = 1'-0"



A2 NORTH PROPOSED
1/4" = 1'-0"

Z:\010 ACTIVE PROJECTS\2018-600 VTSV Admin\09 CAD\092018-600 - VTSV ADMIN.BID.SET - JB LOCAL 10.12.18.rvt