

INWUIC[®]

2015
INTERNATIONAL CODES[®]

INTERNATIONAL
Wildland-Urban
Interface Code[®]

A Member of the International
Code Family[®]

2015 IWUIC[®]

INTERNATIONAL Wildland-Urban Interface Code[®]

CODE ALERT!

Subscribe now to receive critical code updates. Signup is easy!
www.iccsafe.org/2015alert



2015 International Wildland-Urban Interface Code®

First Printing: May 2014

ISBN: 978-1-60983-485-2 (soft-cover edition)

COPYRIGHT© 2014
by
INTERNATIONAL CODE COUNCIL, INC.

Date of First Publication: May 30, 2014

ALL RIGHTS RESERVED. This 2015 *International Wildland-Urban Interface Code*® is a copyrighted work owned by the International Code Council, Inc. Without advance written permission from the copyright owner, no part of this book may be reproduced, distributed, or transmitted in any form or by any means, including, without limitation, electronic, optical or mechanical means (by way of example, and not limitation, photocopying, or recording by or in an information storage retrieval system). For information on permission to copy material exceeding fair use, please contact: Publications, 4051 West Flossmoor Road, Country Club Hills, IL 60478. Phone 1-888-ICC-SAFE (422-7233).

Trademarks: “International Code Council,” the “International Code Council” logo and the “International Wildland-Urban Interface Code” are trademarks of the International Code Council, Inc.

PRINTED IN THE U.S.A.

PREFACE

Introduction

Internationally, code officials recognize the need for a modern, up-to-date code addressing the mitigation of fire in the wildland-urban interface. The *International Wildland-Urban Interface Code*[®], in this 2015 edition, is designed to bridge the gap between enforcement of the *International Building Code*[®] and the *International Fire Code*[®] by mitigating the hazard of wildfires through model code regulations, which safeguard the public health and safety in all communities, large and small.

This comprehensive wildland-urban interface code establishes minimum regulations for land use and the built environment in designated wildland-urban interface areas using prescriptive and performance-related provisions. It is founded on data collected from tests and fire incidents, technical reports and mitigation strategies from around the world. This 2015 edition is fully compatible with all of the *International Codes*[®] (I-Codes[®]) published by the International Code Council (ICC)[®], including the *International Building Code*[®], *International Energy Conservation Code*[®], *International Existing Building Code*[®], *International Fire Code*[®], *International Fuel Gas Code*[®], *International Green Construction Code*[®], *International Mechanical Code*[®], *ICC Performance Code*[®], *International Plumbing Code*[®], *International Private Sewage Disposal Code*[®], *International Property Maintenance Code*[®], *International Residential Code*[®], *International Swimming Pool and Spa Code*[™], and *International Zoning Code*[®].

The *International Wildland-Urban Interface Code* provisions provide many benefits, including the model code development process, which offers an international forum for fire safety professionals to discuss performance and prescriptive code requirements. This forum provides an excellent arena to debate proposed revisions. This model code also encourages international consistency in the application of provisions.

Development

The first edition of the *International Wildland-Urban Interface Code* (2003) was the culmination of an effort initiated in 2001 by the ICC and the three statutory members of the International Code Council: Building Officials and Code Administrators International, Inc. (BOCA), International Conference of Building Officials (ICBO) and Southern Building Code Congress International (SBCCI). The intent was to draft a comprehensive set of regulations for mitigating the hazard to life and property from the intrusion of fire from wildland exposures and fire from adjacent structures, and preventing structure fires from spreading to wildland fuels. Technical content of the 2000 *Urban-Wildland Interface Code*, published by the International Fire Code Institute, was utilized as the basis for the development, followed by the publication of the 2001 Final Draft. This 2015 edition presents the code as originally issued, with changes approved through the ICC Code Development Process through 2013. A new edition such as this is promulgated every 3 years.

This code is founded on principles intended to mitigate the hazard from fires through the development of provisions that adequately protect public health, safety and welfare; provisions that do not unnecessarily increase construction costs; provisions that do not restrict the use of new materials, products or methods of construction; and provisions that do not give preferential treatment to particular types or classes of materials, products or methods of construction.

Adoption

The International Code Council maintains a copyright in all of its codes and standards. Maintaining copyright allows ICC to fund its mission through sales of books, in both print and electronic formats. The *International Wildland-Urban Interface Code* is designed for adoption and use by jurisdictions that recognize and acknowledge the ICC's copyright in the code, and further acknowledge the substantial shared value of the public/private partnership for code development between jurisdictions and the ICC.

The ICC also recognizes the need for jurisdictions to make laws available to the public. All ICC codes and ICC standards, along with the laws of many jurisdictions, are available for free in a non-downloadable form on the ICC's website. Jurisdictions should contact the ICC at adoptions@icc-safe.org to learn how to adopt and distribute laws based on the *International Wildland-Urban Interface Code* in a manner that provides necessary access, while maintaining the ICC's copyright.

Maintenance

The *International Wildland-Urban Interface Code* is kept up to date through the review of proposed changes submitted by code enforcing officials, industry representatives, design professionals and other interested parties. Proposed changes are carefully considered through an open code development process in which all interested and affected parties may participate.

The contents of this work are subject to change through both the code development cycles and the governmental body that enacts the code into law. For more information regarding the code development process, contact the Codes and Standards Development Department of the International Code Council.

While the development procedure of the *International Wildland-Urban Interface Code* ensures the highest degree of care, the ICC, its members and those participating in the development of this code do not accept any liability resulting from compliance or noncompliance with the provisions because the ICC does not have the power or authority to police or enforce compliance with the contents of this code. Only the governmental body that enacts the code into law has such authority.

Code Development Committee Responsibilities (Letter Designations in Front of Section Numbers)

In each code development cycle, proposed changes to the code are considered at the Committee Action Hearing by the International Fire Code Development Committee, whose action constitutes a recommendation to the voting membership for final action on the proposed change. Proposed changes to a code section that has a number beginning with a letter in brackets are considered by a different code development committee. For example, proposed changes to code sections or definitions that have [BG] in front of them (e.g., Section 202 [BG] DWELLING), are considered by the IBC – General Code Development Committee at the Committee Action Hearing.

The content of sections in this code that begin with a letter designation is maintained by another code development committee in accordance with the following:

- [A] = Administrative Code Development Committee;
- [BF] = IBC – Fire Safety Code Development Committee;
- [BG] = IBC – General Code Development Committee;
- [F] = International Fire Code Development Committee; and
- [Z] = International Zoning Code Development Committee.

For the development of the 2018 edition of the I-Codes, there will be three groups of code development committees and they will meet in separate years. Note that these are tentative groupings.

Group A Codes (Heard in 2015, Code Change Proposals Deadline: January 12, 2015)	Group B Codes (Heard in 2016, Code Change Proposals Deadline: January 11, 2016)	Group C Codes (Heard in 2017, Code Change Proposals Deadline: January 11, 2017)
International Building Code – Fire Safety (Chapters 7, 8, 9, 14, 26) – Means of Egress (Chapters 10, 11, Appendix E) – General (Chapters 2-6, 12, 27-33, Appendices A, B, C, D, K)	Administrative Provisions (Chapter 1 of all codes except IRC and IECC, adminis- trative updates to currently referenced standards, and designated definitions)	International Green Construction Code
International Fuel Gas Code	International Building Code – Structural (Chapters 15-25, Appendices F, G, H, I, J, L, M)	
International Existing Building Code	International Energy Conservation Code	
International Mechanical Code	International Fire Code	
International Plumbing Code	International Residential Code – IRC-B (Chapters 1-10, Appendices E, F, H, J, K, L M, O, R, S, T, U)	
International Private Sewage Disposal Code	International Wildland-Urban Interface Code	
International Property Maintenance Code		
International Residential Code – IRC-Mechanical (Chapters 12-24) – IRC-Plumbing (Chapter 25-33, Appendices G, I, N, P)		
International Swimming Pool and Spa Code		
International Zoning Code		

Note: Proposed changes to the ICC Performance Code will be heard by the Code Development Committee noted in brackets [] in the text of the code.

Code change proposals submitted for code sections that have a letter designation in front of them will be heard by the respective committee responsible for such code sections. Because different committees hold code development hearings in different years, it is possible that some proposals for this code will be heard by committees in both the 2015 (Group A) and the 2016 (Group B) code development cycles.

For instance, every section of Chapter 1 of this code is designated as the responsibility of the Administrative Code Development Committee, and that committee is part of the Group B portion of the hearings. This committee will hold its code development hearings in 2016 to consider all code change proposals for Chapter 1 of this code and proposals for Chapter 1 of all I-Codes except the *International Energy Conservation Code*, *International Residential Code* and *ICC Performance Code*. Therefore, any proposals received for Chapter 1 of this code will be assigned to the Administrative Code Development Committee for consideration in 2016.

It is very important that anyone submitting code change proposals understand which code development committee is responsible for the section of the code that is the subject of the code change proposal. For further information on the code development committee responsibilities, please visit the ICC website at www.iccsafe.org/scoping.

Marginal Markings

Solid vertical lines in the margins within the body of the code indicate a technical change from the requirements of the 2012 edition. Deletion indicators in the form of an arrow (➡) are provided in the margin where an entire section, paragraph, exception or table has been deleted or an item in a list of items or a table has been deleted.

A single asterisk [*] placed in the margin indicates that text or a table has been relocated within the code. A double asterisk [**] placed in the margin indicates that the text or table immediately following it has been relocated there from elsewhere in the code. The following table indicates such relocations in the 2015 edition of the *International Wildland-Urban Interface Code*.

2015 LOCATION	2012 LOCATION
None	None

Italicized Terms

Selected terms set forth in Chapter 2, Definitions, are italicized where they appear in code text. Such terms are not italicized where the definition set forth in Chapter 2 does not impart the intended meaning in the use of the term. The terms selected have definitions that the user should read carefully to facilitate better understanding of the code.

EFFECTIVE USE OF THE INTERNATIONAL WILDLAND-URBAN INTERFACE CODE

Population growth and the expanding urban development into traditionally nonurban areas have increasingly brought humans into contact with wildfires. Between 1985 and 1994, wildfires destroyed more than 9,000 homes in the United States. Generally, these homes were located in areas “where structures and other human development meet or intermingle with undeveloped wildland or vegetative fuels,” also known as the wildland-urban interface.

The *International Wildland-Urban Interface Code (IWUIC)* is a model code that is intended to be adopted and used supplemental to the adopted building and fire codes of a jurisdiction. The unrestricted use of property in wildland-urban interface areas is a potential threat to life and property from fire and resulting erosion. The IWUIC has as its objective the establishment of minimum special regulations for the safeguarding of life and property from the intrusion of fire from wildland fire exposures and fire exposures from adjacent structures and to prevent structure fires from spreading to wildland fuels, even in the absence of fire department intervention.

Safeguards to prevent the occurrence of fires and to provide adequate fire protection facilities to control the spread of fire in wildland-urban interface areas are provided in a tiered manner commensurate with the relative level of hazard present.

Arrangement and Format of the 2015 IWUIC

Before applying the requirements of the IWUIC it is beneficial to understand its arrangement and format. The IWUIC, like other codes published by ICC, is arranged and organized to follow logical steps that generally occur during a plan review or inspection. The IWUIC is divided as follows:

Chapters	Subjects
1-2	Administration and Definitions
3-4	Wildland-Urban Interface Area Designation and Requirements
5	Building Construction Regulations
6	Fire Protection Requirements
7	Referenced Standards
Appendices A-H	Adoptable and Informational Appendices

The following is a chapter-by-chapter synopsis of the scope and intent of the provisions of the *International Wildland-Urban Interface Code*:

Chapter 1 Scope and Administration. This chapter contains provisions for the application, enforcement and administration of subsequent requirements of the code. In addition to establishing the scope of the code, Chapter 1 identifies which buildings and structures come under its purview. Chapter 1 is largely concerned with maintaining “due process of law” in enforcing the regulations contained in the body of the code. Only through careful observation of the administrative provisions can the code official reasonably expect to demonstrate that “equal protection under the law” has been provided.

Chapter 2 Definitions. All terms that are defined in the code are listed alphabetically in Chapter 2. While a defined term may be used in one chapter or another, the meaning provided in Chapter 2 is applicable throughout the code.

Where understanding of a term's definition is especially key to or necessary for understanding of a particular code provision, the term is shown in *italics* wherever it appears in the code. This is true only for those terms that have a meaning that is unique to the code. In other words, the generally understood meaning of a term or phrase might not be sufficient or consistent with the meaning prescribed by the code; therefore, it is essential that the code-defined meaning be known.

Guidance regarding tense, gender and plurality of defined terms as well as guidance regarding terms not defined in this code are also provided.

Chapter 3 Wildland-Urban Interface Areas. Chapter 3 provides for the fundamental aspect of applying the code—the legal declaration and establishment of wildland-urban interface areas within the adopting jurisdiction by the local legislative body. The provisions cover area analysis and declaration based on findings of fact (located in Appendix E), mapping of the area, legal recordation of the maps with the local keeper of records and the periodic review and reevaluation of the declared areas on a regular basis. If needed, revisions can be directed by the legislative body of the jurisdiction.

Chapter 4 Wildland-Urban Interface Area Requirements. The requirements of Chapter 4 apply to all occupancies in the wildland-urban interface and pertain to all of the following:

1. Fire service access to the property that is to be protected, including fire apparatus access roads and off-road driveways.
2. Premises identification.
3. Key boxes to provide ready access to properties secured by gated roadways or other impediments to rapid fire service access.
4. Fire protection water supplies, including adequate water sources, pumper apparatus drafting sites, fire hydrant systems and system reliability.
5. Fire department access to equipment such as fire suppression equipment and fire hydrants.
6. Fire protection plans.

Chapter 5 Special Building Construction Regulations. The regulations in Chapter 5 establish minimum standards for the location, design and construction of buildings and structures based on fire hazard severity in the wildland-urban interface.

The construction provisions of Chapter 5 are intended to supplement the requirements of the *International Building Code* and address mitigation of the unique hazards posed to buildings by wildfire and to reduce the hazards of building fires spreading to wildland fuels. This is accomplished by requiring ignition-resistant construction materials based on the hazard severity of the building site. Construction features regulated include underfloor areas, roof coverings, eaves and soffits, gutters and downspouts, exterior walls, doors and windows, ventilation openings and accessory structures.

Chapter 6 Fire Protection Requirements. Chapter 6 establishes minimum fire protection requirements to mitigate the hazards to life and property from fire in the wildland-urban interface. The chapter includes both design-oriented and prescriptive mitigation strategies to reduce the hazards of fire originating within a structure spreading to the wildland and fire originating in the wildland spreading to structures.

Especially targeted for a systems-approach to fire protection are those new buildings which are deemed to be especially hazardous under Chapter 5; these buildings are required to be sprinklered. Other hazard mitigation strategies include establishing around structures defensible space zones wherein combustible vegetation and trees are regulated and kept away from buildings and trees are located 10 feet crown-to-crown away from each other. Additional hazards that are dealt with in Chapter 6 include spark arresters on chimneys, regulated storage of combustible materials, fire-wood and LP-gas.

Chapter 7 Referenced Standards. The code contains several references to standards that are used to regulate materials and methods of construction. Chapter 7 contains a comprehensive list of all standards that are referenced in the code. The standards are part of the code to the extent of the reference to the standard. Compliance with the referenced standard is necessary for compliance with this code. By providing specifically adopted standards, the construction and installation requirements necessary for compliance with the code can be readily determined. The basis for code

compliance is, therefore, established and available on an equal basis to the code official, contractor, designer and owner.

Chapter 7 is organized in a manner that makes it easy to locate specific standards. It lists all of the referenced standards, alphabetically, by acronym of the promulgating agency of the standard. Each agency's standards are then listed in either alphabetical or numeric order based upon the standard identification. The list also contains the title of the standard; the edition (date) of the standard referenced; any addenda included as part of the ICC adoption; and the section or sections of this code that reference the standard.

Appendix A General Requirements. Appendix A, while not part of the code, can become part of the code when specifically included in the adopting ordinance (see sample ordinance on page xi). Its purpose is to provide fire-protection measures supplemental to those found in Chapter 6 to reduce the threat of wildfire in a wildland-urban interface area and improve the capability for controlling such fires. This appendix includes detailed requirements for vegetation control; the code official's authority to close wildland-interface areas in times of high fire danger; control of fires, fire-works usage and other sources of ignition; storage of hazardous materials and combustibles; bans the dumping of waste materials and ashes and coals in wildland-urban interface areas; protection of pumps and water supplies; and limits temporary uses within the wildland-urban interface area.

Appendix B Vegetation Management Plan. Appendix B, while not part of the code, can become part of the code when specifically included in the adopting ordinance (see sample ordinance on page xi). Its purpose is to provide criteria for submitting vegetation management plans, specifying their content and establishing a criterion for considering vegetation management as being a fuel modification.

Appendix C Fire Hazard Severity Form. Appendix C, while not part of the code, can become part of the code (replacing Table 502.1) when specifically included in the adopting ordinance (see sample ordinance on page xi). Its purpose is to provide an alternative methodology to using Table 502.1 for analyzing the fire hazard severity of building sites using a pre-assigned value/scoring system for each feature that impacts the hazard level of a building site. Included in the evaluation are site access, types and management of vegetation, percentage of defensible space on the site, site topography, class of roofing and other construction materials used on the building existing or to be constructed on the site, fire protection water supply, and whether utilities are installed above or below ground.

Appendix D Fire Danger Rating System. Appendix D is an excerpt from the National Fire Danger Rating System (NFDRS), 1978, United States Department of Agriculture Forest Service, General Technical Report INT-39, and is for information purposes and is not intended for adoption. The fuel models that are included are only general descriptions because they represent all wildfire fuels from Florida to Alaska and from the East Coast to California.

The National Fire Danger Rating System (NFDRS) is a set of computer programs and algorithms that allow land management agencies to estimate today's or tomorrow's fire danger for a given rating area. NFDRS characterizes fire danger by evaluating the approximate upper limit of fire behavior in a fire danger rating area during a 24-hour period based on fuels, topography and weather, or what is commonly called the fire triangle. Fire danger ratings are guides for initiating presuppression activities and selecting the appropriate level of initial response to a reported wildfire in lieu of detailed, site- and time-specific information.

Predicting the potential behavior and effects of wildland fire are essential tasks in fire management. Surface fire behavior and fire effects models and prediction systems are driven in part by fuelbed inputs such as load, bulk density, fuel particle size, heat content, and moisture content. To facilitate use in models and systems, fuelbed inputs have been formulated into fuel models. A fuel model is a set of fuelbed inputs needed by a particular fire behavior or fire effects model. Different kinds of fuel models are used in fire spread models in a variety of fire behavior modeling systems. The fuel models in this appendix correlate with the light, medium and heavy fuel definitions found in Chapter 2 of the code.

Appendix E Findings of Fact. Appendix E is an informational appendix that intends to provide a methodology for presenting the findings of fact that are required by Chapter 3 of the code when a jurisdiction defines and establishes a wildland-urban interface area that will be the subject of regulation by the IWUIC. The development of written "findings of fact" that justifies designation of wild-

land-interface areas by local jurisdictions requires that a certain amount of research and analysis be conducted to support a written finding that is both credible and professional. In the context of adopting a supplemental document such as the wildland-urban interface declaration, the writing of these findings is essential in creating the maps and overlap needed to use their specific options.

The purpose of this appendix is to provide an overview of how local officials could approach this process. There are three essential phenomena cited in some adoption statutes that vary from community to community: climate, topography and geography. Although it can be agreed that there are other findings that could draw distinction in local effects, these three features are also consistent with standard code text that offers opportunity to be more restrictive than local codes. The process demands a high level of professionalism to protect the jurisdiction's credibility in adopting more restrictive requirements. A superficial effort in preparing the findings of fact could jeopardize the proposed or adopted code restriction. Jurisdictions should devote a sufficient amount of time to draft the findings of fact to ensure that the facts are accurate, comprehensive and verifiable.

Appendix F Characteristics of Fire-Resistive Vegetation. Appendix F is an informational appendix provided for the convenience of the code user. It is simply a compilation of the eight characteristics of fire-resistive vegetation that can be used effectively within wildland-urban interface areas to reduce the likelihood of fire spread through vegetation.

Appendix G Self-Defense Mechanism. The *International Wildland-Urban Interface Code* establishes a set of minimum standards to reduce the loss of property from wildfire. The purpose of these standards is to prevent wildfire spreading from vegetation to a building. Frequently, proposals are made by property or landowners of buildings located in the wildland-urban interface to consider other options and alternatives instead of meeting these minimum standards. Appendix G is an information appendix that provides discussion of some elements of the proposed self-defense mechanisms and their role in enhancing the protection of exposed structures in the wildland-urban interface. To accept alternative self-defense mechanisms, the code official must carefully examine whether these devices will be in place at the time of an event and whether or not they will assist or actually complicate the defense of the structure by fire suppression forces if they are available.

Appendix H International Wildland-Urban Interface Code Flowchart. Appendix H is an information appendix that is based on the "Decision Tree" concept and is intended to provide the code official with a graphical, flowchart representation of how the IWUIC is to be applied in an orderly manner.

LEGISLATION

Jurisdictions wishing to adopt the 2015 *International Wildland-Urban Interface Code* as an enforceable regulation for the mitigation of fire in the wildland-urban interface should ensure that certain factual information is included in the adopting legislation at the time adoption is being considered by the appropriate governmental body. The following sample adoption legislation addresses several key elements, including the information required for insertion into the code text.

SAMPLE LEGISLATION FOR ADOPTION OF THE *INTERNATIONAL WILDLAND-URBAN INTERFACE CODE* ORDINANCE NO. _____

A[N] [ORDINANCE/STATUTE/REGULATION] of the [JURISDICTION] adopting the 2015 edition of the *International Wildland-Urban Interface Code*, regulating and governing the mitigation of hazard to life and property from the intrusion of fire from wildland exposures, fire from adjacent structures and prevention of structure fires from spreading to wildland fuels in the [JURISDICTION]; providing for the issuance of permits and collection of fees therefor; repealing [ORDINANCE/STATUTE/REGULATION] No. _____ of the [JURISDICTION] and all other ordinances or parts of laws in conflict therewith.

The [GOVERNING BODY] of the [JURISDICTION] does ordain as follows:

Section 1. That a certain document, three (3) copies of which are on file in the office of the [TITLE OF JURISDICTION'S KEEPER OF RECORDS] of [NAME OF JURISDICTION], being marked and designated as the *International Wildland-Urban Interface Code*, 2015 edition, including Appendix Chapters [FILL IN THE APPENDIX CHAPTERS BEING ADOPTED], as published by the International Code Council, be and is hereby adopted as the *Wildland-Urban Interface Code* of the [JURISDICTION], in the State of [STATE NAME] for regulating and governing the mitigation of hazard to life and property from the intrusion of fire from wildland exposures, fire from adjacent structures and prevention of structure fires from spreading to wildland fuels as herein provided; providing for the issuance of permits and collection of fees therefor; and each and all of the regulations, provisions, penalties, conditions and terms of said *Wildland-Urban Interface Code* on file in the office of the [JURISDICTION] are hereby referred to, adopted, and made a part hereof, as if fully set out in this legislation, with the additions, insertions, deletions and changes, if any, prescribed in Section 2 of this ordinance.

Section 2. The following sections are hereby revised:

Section 101.1. Insert: [NAME OF JURISDICTION]

Section 103.1. Insert: [NAME OF DEPARTMENT]

Section 109.4.7. Insert: [OFFENSE, DOLLAR AMOUNT, NUMBER OF DAYS]

Section 114.4. Insert: [DOLLAR AMOUNT] in two places

Section 3. That [ORDINANCE/STATUTE/REGULATION] No. _____ of [JURISDICTION] entitled [FILL IN HERE THE COMPLETE TITLE OF THE LEGISLATION OR LAWS IN EFFECT AT THE PRESENT TIME SO THAT THEY WILL BE REPEALED BY DEFINITE MENTION] and all other ordinances or parts of laws in conflict herewith are hereby repealed.

Section 4. That if any section, subsection, sentence, clause or phrase of this legislation is, for any reason, held to be unconstitutional, such decision shall not affect the validity of the remaining portions of this ordinance. The [GOVERNING BODY] hereby declares that it would have passed this law, and each section, subsection, clause or phrase thereof, irrespective of the fact that any one or more sections, subsections, sentences, clauses and phrases be declared unconstitutional.

Section 5. That nothing in this legislation or in the *Wildland-Urban Interface Code* hereby adopted shall be construed to affect any suit or proceeding impending in any court, or any rights acquired, or liability incurred, or any cause or causes of action acquired or existing, under any act or ordinance hereby repealed as cited in Section 3 of this law; nor shall any just or legal right or remedy of any character be lost, impaired or affected by this legislation.

Section 6. That the [JURISDICTION'S KEEPER OF RECORDS] is hereby ordered and directed to cause this legislation to be published. (An additional provision may be required to direct the number of times the legislation is to be published and to specify that it is to be in a newspaper in general circulation. Posting may also be required.)

Section 7. That this law and the rules, regulations, provisions, requirements, orders and matters established and adopted hereby shall take effect and be in full force and effect [TIME PERIOD] from and after the date of its final passage and adoption.

Section 8. Specific boundaries of natural or man-made features of wildland-urban interface areas shall be as shown on the wildland-urban interface area map. The legal description of such areas is as described as follows: [INSERT LEGAL DESCRIPTION]

TABLE OF CONTENTS

CHAPTER 1 SCOPE AND ADMINISTRATION 1

PART 1—GENERAL PROVISIONS. 1

Section

101 Scope and General Requirements. 1

PART 2—ADMINISTRATIVE PROVISIONS. 1

102 Applicability. 1

103 Enforcement Agency 2

104 Authority of the Code Official 2

105 Compliance Alternatives 2

106 Appeals. 3

107 Permits 3

108 Plans and Specifications 5

109 Inspection and Enforcement. 5

110 Certificate of Completion. 8

111 Temporary Structures and Uses 8

112 Fees. 8

113 Service Utilities 8

114 Stop Work Order 9

CHAPTER 2 DEFINITIONS 11

Section

201 General 11

202 Definitions 11

**CHAPTER 3 WILDLAND-URBAN
INTERFACE AREAS 13**

Section

301 General 13

302 Wildland-urban Interface Area Designations. 13

**CHAPTER 4 WILDLAND-URBAN INTERFACE
AREA REQUIREMENTS 15**

Section

401 General 15

402 Applicability. 15

403 Access. 15

404 Water Supply 16

405 Fire Protection Plan 17

**CHAPTER 5 SPECIAL BUILDING CONSTRUCTION
REGULATIONS. 19**

Section

501 General. 19

502 Fire Hazard Severity 19

503 Ignition-resistant Construction and Material 19

504 Class 1 Ignition-resistant Construction 20

505 Class 2 Ignition-resistant Construction 22

506 Class 3 Ignition-resistant Construction 23

507 Replacement or Repair of Roof Coverings 23

**CHAPTER 6 FIRE PROTECTION
REQUIREMENTS. 25**

Section

601 General. 25

602 Automatic Sprinkler Systems. 25

603 Defensible Space 25

604 Maintenance of Defensible Space 26

605 Spark Arresters. 26

606 Liquefied Petroleum Gas Installations. 26

607 Storage of Firewood and Combustible
Materials. 26

CHAPTER 7 REFERENCED STANDARDS. 27

APPENDIX A GENERAL REQUIREMENTS 29

Section

A101 General. 29

A102 Vegetation Control. 29

A103 Access Restrictions 30

A104 Ignition Source Control 30

A105 Control of Storage 31

A106 Dumping. 31

A107 Protection of Pumps and Water
Storage Facilities 32

A108 Land Use Limitations. 32

A109 Referenced Standards. 32

**APPENDIX B VEGETATION
MANAGEMENT PLAN 33**

Section

B101 General. 33



TABLE OF CONTENTS

APPENDIX C FIRE HAZARD SEVERITY FORM	35
APPENDIX D FIRE DANGER RATING SYSTEM	37
APPENDIX E FINDINGS OF FACT.....	41
APPENDIX F CHARACTERISTICS OF FIRE-RESISTIVE VEGETATION.....	45
APPENDIX G SELF-DEFENSE MECHANISM.....	47
APPENDIX H INTERNATIONAL WILDLAND- URBAN INTERFACE CODE FLOWCHART	49
INDEX	53

CHAPTER 1

SCOPE AND ADMINISTRATION

PART 1—GENERAL PROVISIONS

SECTION 101 SCOPE AND GENERAL REQUIREMENTS

[A] 101.1 Title. These regulations shall be known as the *Wildland-Urban Interface Code* of [NAME OF JURISDICTION], hereinafter referred to as “this code.”

[A] 101.2 Scope. The provisions of this code shall apply to the construction, alteration, movement, repair, maintenance and use of any building, structure or premises within the *wildland-urban interface areas* in this jurisdiction.

Buildings or conditions in existence at the time of the adoption of this code are allowed to have their use or occupancy continued, if such condition, use or occupancy was legal at the time of the adoption of this code, provided such continued use does not constitute a distinct danger to life or property.

Buildings or structures moved into or within the jurisdiction shall comply with the provisions of this code for new buildings or structures.

[A] 101.2.1 Appendices. Provisions in the appendices shall not apply unless specifically adopted.

[A] 101.3 Objective. The objective of this code is to establish minimum regulations consistent with nationally recognized good practice for the safeguarding of life and for property protection. Regulations in this code are intended to mitigate the risk to life and structures from intrusion of fire from wildland fire exposures and fire exposures from adjacent structures and to mitigate structure fires from spreading to wildland fuels. The extent of this regulation is intended to be tiered commensurate with the relative level of hazard present.

The unrestricted use of property in *wildland-urban interface areas* is a potential threat to life and property from fire and resulting erosion. Safeguards to prevent the occurrence of fires and to provide adequate fire protection facilities to control the spread of fire in *wildland-urban interface areas* shall be in accordance with this code.

This code shall supplement the jurisdiction’s building and fire codes, if such codes have been adopted, to provide for special regulations to mitigate the fire- and life-safety hazards of the *wildland-urban interface areas*.

[A] 101.4 Retroactivity. The provisions of the code shall apply to conditions arising after the adoption thereof, conditions not legally in existence at the adoption of this code and conditions that, in the opinion of the code official, constitute a distinct hazard to life or property.

Exception: Provisions of this code that specifically apply to existing conditions are retroactive.

[A] 101.5 Additions or alterations. Additions or alterations shall be permitted to be made to any building or structure

without requiring the existing building or structure to comply with all of the requirements of this code, provided the addition or alteration conforms to that required for a new building or structure.

Exception: Provisions of this code that specifically apply to existing conditions are retroactive.

Additions or alterations shall not be made to an existing building or structure that will cause the existing building or structure to be in violation of any of the provisions of this code nor shall such additions or alterations cause the existing building or structure to become unsafe. An unsafe condition shall be deemed to have been created if an addition or alteration will cause the existing building or structure to become structurally unsafe or overloaded; will not provide adequate access in compliance with the provisions of this code or will obstruct existing exits or access; will create a fire hazard; will reduce required fire resistance or will otherwise create conditions dangerous to human life.

[A] 101.6 Maintenance. Buildings, structures, landscape materials, vegetation, *defensible space* or other devices or safeguards required by this code shall be maintained in conformance to the code edition under which installed. The owner or the owner’s authorized agent shall be responsible for the maintenance of buildings, structures, landscape materials and vegetation.

PART 2—ADMINISTRATIVE PROVISIONS

SECTION 102 APPLICABILITY

[A] 102.1 General. Where there is a conflict between a general requirement and a specific requirement, the specific requirement shall govern. Where, in any specific case, different sections of this code specify different materials, methods of construction or other requirements, the most restrictive shall govern.

[A] 102.2 Other laws. The provisions of this code shall not be deemed to nullify any provisions of local, state or federal law.

[A] 102.3 Application of references. References to chapter or section numbers, or to provisions not specifically identified by number, shall be construed to refer to such chapter, section or provision of this code.

[A] 102.4 Referenced codes and standards. The codes and standards referenced in this code shall be those that are listed in Chapter 7 and such codes and standards shall be considered as part of the requirements of this code to the prescribed extent of each such reference and as further regulated in Sections 102.4.1 and 102.4.2.

SCOPE AND ADMINISTRATION

[A] **102.4.1 Conflicts.** Where conflicts occur between provisions of this code and the referenced standards, the provisions of this code shall govern.

[A] **102.4.2 Provisions in referenced codes and standards.** Where the extent of the reference to a referenced code or standard includes subject matter that is within the scope of this code, the provisions of this code, as applicable, shall take precedence over the provisions in the referenced standard.

[A] **102.5 Partial invalidity.** In the event that any part or provision of this code is held to be illegal or void, this shall not have the effect of making void or illegal any of the other parts or provisions.

[A] **102.6 Existing conditions.** The legal occupancy or use of any structure or condition existing on the date of adoption of this code shall be permitted to continue without change, except as is specifically covered in this code, the *International Property Maintenance Code* or the *International Fire Code*, or as is deemed necessary by the code official for the general safety and welfare of the occupants and the public.

SECTION 103 ENFORCEMENT AGENCY

[A] **103.1 Creation of enforcement agency.** The department of [INSERT NAME OF DEPARTMENT] is hereby created and the official in charge thereof shall be known as the code official.

[A] **103.2 Appointment.** The code official shall be appointed by the chief appointing authority of the jurisdiction.

[A] **103.3 Deputies.** In accordance with the prescribed procedures of this jurisdiction and with the concurrence of the appointing authority, the code official shall have the authority to appoint a deputy(s). Such employees shall have powers as delegated by the code official.

SECTION 104 AUTHORITY OF THE CODE OFFICIAL

[A] **104.1 Powers and duties of the code official.** The code official is hereby authorized to enforce the provisions of this code. The code official shall have the authority to render interpretations of this code and to adopt policies and procedures in order to clarify the application of its provisions. Such interpretations, policies and procedures shall not have the effect of waiving requirements specifically provided for in this code.

[A] **104.2 Interpretations, rules and regulations.** The code official shall have the power to render interpretations of this code and to adopt and enforce rules and supplemental regulations to clarify the application of its provisions. Such interpretations, rules and regulations shall be in conformance to the intent and purpose of this code.

A copy of such rules and regulations shall be filed with the clerk of the jurisdiction and shall be in effect immediately thereafter. Additional copies shall be available for distribution to the public.

[A] **104.3 Liability of the code official.** The code official, member of the board of appeals or employee charged with the enforcement of this code, acting in good faith and without malice in the discharge of the duties required by this code or other pertinent law or ordinance, shall not thereby be rendered civilly or criminally personally liable for damages that accrue to persons or property as a result of an act or by reason of an act or omission in the discharge of such duties.

[A] **104.3.1 Legal defense.** A suit or criminal complaint brought against the code official or employee because of such act or omission performed by the code official or employee in the enforcement of any provision of such codes or other pertinent laws or ordinances implemented through the enforcement of this code or enforced by the code enforcement agency shall be defended by this jurisdiction until final termination of such proceedings, and any judgment resulting therefrom shall be assumed by this jurisdiction. The code enforcement agency or its parent jurisdiction shall not be held as assuming any liability by reason of the inspections authorized by this code or any permits or certificates issued under this code.

[A] **104.4 Subjects not regulated by this code.** Where applicable standards or requirements are not set forth in this code, or are contained within other laws, codes, regulations, ordinances or policies adopted by the jurisdiction, compliance with applicable standards of other nationally recognized safety standards, as *approved*, shall be deemed as prima facie evidence of compliance with the intent of this code.

[A] **104.5 Matters not provided for.** Requirements that are essential for the public safety of an existing or proposed activity, building or structure, or for the safety of the occupants thereof, which are not specifically provided for by this code, shall be determined by the code official consistent with the necessity to establish the minimum requirements to safeguard the public health, safety and general welfare.

[A] **104.6 Applications and permits.** The code official is authorized to receive applications, review construction documents and issue permits for construction regulated by this code, issue permits for operations regulated by this code, inspect the premises for which such permits have been issued and enforce compliance with the provisions of this code.

[A] **104.7 Other agencies.** Where requested to do so by the code official, other officials of this jurisdiction shall assist and cooperate with the code official in the discharge of the duties required by this code.

SECTION 105 COMPLIANCE ALTERNATIVES

[A] **105.1 Practical difficulties.** Where there are practical difficulties involved in carrying out the provisions of this code, the code official is authorized to grant modifications for individual cases on application in writing by the owner or an owner's authorized agent. The code official shall first find that a special individual reason makes enforcement of the strict letter of this code impractical, that the modification is in conformance to the intent and purpose of this code, and that

the modification does not lessen any fire protection requirements or any degree of structural integrity. The details of any action granting modifications shall be recorded and entered into the files of the code enforcement agency.

[A] 105.2 Technical assistance. To determine the acceptability of technologies, processes, products, facilities, materials and uses attending the design, operation or use of a building or premises subject to the inspection of the code official, the code official is authorized to require the owner, the owner's authorized agent or the person in possession or control of the building or premises to provide, without charge to the jurisdiction, a technical opinion and report. The opinion and report shall be prepared by a qualified engineer, specialist, laboratory or fire safety specialty organization acceptable to the code official and the owner or the owner's authorized agent, and shall analyze the fire safety of the design, operation or use of the building or premises, the facilities and appurtenances situated thereon and fuel management for purposes of establishing fire hazard severity to recommend necessary changes.

[A] 105.3 Alternative materials or methods. The code official, in concurrence with approval from the *building official* and fire chief, is authorized to approve alternative materials or methods, provided that the code official finds that the proposed design, use or operation satisfactorily complies with the intent of this code and that the alternative is, for the purpose intended, at least equivalent to the level of quality, strength, effectiveness, fire resistance, durability and safety prescribed by this code. Approvals under the authority herein contained shall be subject to the approval of the *building official* where the alternate material or method involves matters regulated by the *International Building Code*.

The code official shall require that sufficient evidence or proof be submitted to substantiate any claims made regarding the use of alternative materials or methods. The details of any action granting approval of an alternative shall be recorded and entered in the files of the code enforcement agency. Where the alternative material, design or method of construction is not approved, the *code official* shall respond in writing, stating the reasons the alternative was not approved.

SECTION 106 APPEALS

[A] 106.1 General. To determine the suitability of alternative materials and methods and to provide for reasonable interpretations of the provisions of this code, there shall be and hereby is created a board of appeals consisting of five members who are qualified by experience and training to pass judgment on pertinent matters. The code official, *building official* and fire chief shall be ex officio members, and the code official shall act as secretary of the board. The board of appeals shall be appointed by the legislative body and shall hold office at their discretion. The board shall adopt reasonable rules and regulations for conducting its investigations and shall render decisions and findings in writing to the code official, with a duplicate copy to the applicant.

[A] 106.2 Limitations of authority. The board of appeals shall not have authority relative to interpretation of the

administrative provisions of this code and shall not have authority to waive requirements of this code.

SECTION 107 PERMITS

[A] 107.1 General. Where not otherwise provided in the requirements of the *International Building Code* or *International Fire Code*, permits are required in accordance with Sections 107.2 through 107.10.

[A] 107.2 Permits required. Unless otherwise exempted, buildings or structures regulated by this code shall not be erected, constructed, altered, repaired, moved, removed, converted, demolished or changed in use or occupancy unless a separate permit for each building or structure has first been obtained from the code official.

For buildings or structures erected for temporary uses, see Appendix A, Section A108.3, of this code.

Where required by the code official, a permit shall be obtained for the following activities, operations, practices or functions within a *wildland-urban interface area*:

1. Automobile wrecking yard.
2. Candles and open flames in assembly areas.
3. Explosives or blasting agents.
4. Fireworks.
5. Flammable or combustible liquids.
6. Hazardous materials.
7. Liquefied petroleum gases.
8. Lumberyards.
9. Motor vehicle fuel-dispensing stations.
10. Open burning.
11. Pyrotechnical special effects material.
12. Tents, canopies and temporary membrane structures.
13. Tire storage.
14. Welding and cutting operations.

[A] 107.3 Work exempt from permit. Unless otherwise provided in the requirements of the *International Building Code* or *International Fire Code*, a permit shall not be required for the following:

1. One-story detached accessory structures used as tool and storage sheds, playhouses and similar uses, provided the floor area does not exceed 120 square feet (11.15 m²) and the structure is located more than 50 feet (15 240 mm) from the nearest adjacent structure.
2. Fences not over 6 feet (1829 mm) high.

Exemption from the permit requirements of this code shall not be deemed to grant authorization for any work to be done in any manner in violation of the provisions of this code or any other laws or ordinances of this jurisdiction.

The code official is authorized to stipulate conditions for permits. Permits shall not be issued where public safety would be at risk, as determined by the code official.

SCOPE AND ADMINISTRATION

[A] 107.4 Permit application. To obtain a permit, the applicant shall first file an application therefor in writing on a form furnished by the code enforcement agency for that purpose. Every such application shall:

1. Identify and describe the work, activity, operation, practice or function to be covered by the permit for which application is made.
2. Describe the land on which the proposed work, activity, operation, practice or function is to be done by legal description, street address or similar description that will readily identify and definitely locate the proposed building, work, activity, operation, practice or function.
3. Indicate the use or occupancy for which the proposed work, activity, operation, practice or function is intended.
4. Be accompanied by plans, diagrams, computation and specifications and other data as required in Section 108 of this code.
5. State the valuation of any new building or structure or any addition, remodeling or alteration to an existing building.
6. Be signed by the applicant or the applicant's authorized agent.
7. Give such other data and information as required by the code official.

[A] 107.4.1 Preliminary inspection. Before a permit is issued, the code official is authorized to inspect and approve the systems, equipment, buildings, devices, premises and spaces or areas to be used.

[A] 107.4.2 Time limitation of application. An application for a permit for any proposed work shall be deemed to have been abandoned 180 days after the date of filing, unless such application has been pursued in good faith or a permit has been issued; except that the code official is authorized to grant one or more extensions of time for additional periods not exceeding 180 days each. The extension shall be requested in writing and justifiable cause demonstrated.

[A] 107.5 Permit approval. Before a permit is issued, the code official, or an authorized representative, shall review and approve permitted uses, occupancies or structures. Where laws or regulations are enforceable by other agencies or departments, a joint approval shall be obtained from agencies or departments concerned.

[A] 107.6 Permit issuance. The application, plans, specifications and other data filed by an applicant for a permit shall be reviewed by the code official. If the code official finds that the work described in an application for a permit and the plan, specifications and other data filed therewith conform to the requirements of this code, the code official is allowed to issue a permit to the applicant.

When the code official issues the permit, the code official shall endorse in writing or stamp the plans and specifications APPROVED. Such *approved* plans and specifications shall not be changed, modified or altered without authorization

from the code official, and work regulated by this code shall be done in accordance with the *approved* plans.

[A] 107.6.1 Refusal to issue a permit. Where the application or construction documents do not conform to the requirements of pertinent laws, the code official shall reject such application in writing, stating the reasons therefor.

[A] 107.7 Validity of permit. The issuance or granting of a permit or approval of plans, specifications and computations shall not be construed to be a permit for, or an approval of, any violation of any of the provisions of this code or of any other ordinance of the jurisdiction. Permits presuming to give authority to violate or conceal the provisions of this code or other ordinances of the jurisdiction shall not be valid.

[A] 107.8 Expiration. Every permit issued by the code official under the provisions of this code shall expire by limitation and become null and void if the building, use or work authorized by such permit is not commenced within 180 days from the date of such permit, or if the building, use or work authorized by such permit is suspended or abandoned at any time after the work is commenced for a period of 180 days.

Any permittee holding an unexpired permit is allowed to apply for an extension of the time within which work is allowed to commence under that permit when the permittee is unable to commence work within the time required by this section for good and satisfactory reasons. The code official is authorized to extend the time for action by the permittee for a period not exceeding 180 days on written request by the permittee showing that circumstances beyond the control of the permittee have prevented action from being taken. Permits shall not be extended more than once.

[A] 107.9 Retention of permits. Permits shall at all times be kept on the premises designated therein and shall at all times be subject to inspection by the code official or other authorized representative.

[A] 107.10 Revocation of permits. Permits issued under this code can be suspended or revoked when it is determined by the code official that:

1. It is used by a person other than the person to whom the permit was issued.
2. It is used for a location other than that for which the permit was issued.
3. Any of the conditions or limitations set forth in the permit have been violated.
4. The permittee fails, refuses or neglects to comply with any order or notice duly served on him or her under the provisions of this code within the time provided therein.
5. There has been any false statement or misrepresentation as to material fact in the application or plans on which the permit or application was made.
6. When the permit is issued in error or in violation of any other ordinance, regulations or provisions of this code.

The code official is allowed to, in writing, suspend or revoke a permit issued under the provisions of this code whenever the permit is issued in error or on the basis of incor-

rect information supplied, or in violation of any ordinance or regulation or any of the provisions of this code.

SECTION 108 PLANS AND SPECIFICATIONS

[A] 108.1 General. Plans, engineering calculations, diagrams and other data shall be submitted in at least two sets with each application for a permit. The construction documents shall be prepared by a registered design professional where required by the statutes of the jurisdiction in which the project is to be constructed. Where special conditions exist, the code official is authorized to require additional documents to be prepared by a registered design professional.

Exception: Submission of plans, calculations, construction inspection requirements and other data, if it is found that the nature of the work applied for is such that reviewing of plans is not necessary to obtain compliance with this code.

[A] 108.2 Information on plans and specifications. Plans and specifications shall be drawn to scale on substantial paper or cloth and shall be of sufficient clarity to indicate the location, nature and extent of the work proposed, and show in detail that it will conform to the provisions of this code and relevant laws, ordinances, rules and regulations.

[A] 108.3 Site plan. In addition to the requirements for plans in the *International Building Code*, site plans shall include topography, width and percent of grade of access roads, landscape and vegetation details, locations of structures or building envelopes, existing or proposed overhead utilities, occupancy classification of buildings, types of ignition-resistant construction of buildings, structures and their appendages, roof classification of buildings and site water supply systems. The code official is authorized to waive or modify the requirement for a site plan where the application for permit is for alteration or repair or where otherwise warranted.

[A] 108.4 Vegetation management plans. Where utilized by the permit applicant pursuant to Section 502, vegetation management plans shall be prepared and shall be submitted to the code official for review and approval as part of the plans required for a permit.

[A] 108.5 Fire protection plan. Where required by the code official pursuant to Section 405, a fire protection plan shall be prepared and shall be submitted to the code official for review and *approved* as a part of the plans required for a permit.

[A] 108.6 Other data and substantiation. Where required by the code official, the plans and specifications shall include classification of fuel loading, fuel model light, medium or heavy, and substantiating data to verify classification of fire-resistant vegetation.

[A] 108.7 Vicinity plan. In addition to the requirements for site plans, plans shall include details regarding the vicinity within 300 feet (91 440 mm) of lot lines, including other structures, slope, vegetation, *fuel breaks*, water supply systems and access roads.

[A] 108.8 Retention of plans. One set of *approved* plans, specifications and computations shall be retained by the code official for a period of not less than 180 days from date of completion of the permitted work or as required by state or local laws; and one set of *approved* plans and specifications shall be returned to the applicant, and said set shall be kept on the site of the building, use or work at all times during which the work authorized thereby is in progress.

[A] 108.9 Examination of documents. The code official shall examine or cause to be examined the accompanying construction documents and shall ascertain by such examinations whether the construction indicated and described is in accordance with the requirements of this code and other pertinent laws or ordinances.

[A] 108.10 Amended construction documents. Work shall be installed in accordance with the approved construction documents, and changes made during construction that are not in compliance with the *approved* documents shall be resubmitted for *approval* as an amended set of construction documents.

[A] 108.11 Previous approvals. This code shall not require changes in the construction documents, construction or designated occupancy of a structure for which a lawful permit has been heretofore issued or otherwise lawfully authorized, and the construction of which has been pursued in good faith within 180 days after the effective date of this code and has not been abandoned.

[A] 108.12 Phased approval. The code official is authorized to issue a permit for the construction of foundations or any other part of a building or structure before the construction documents for the whole building or structure have been submitted, provided that adequate information and detailed statements have been filed complying with pertinent requirements of this code. The holder of such permit for the foundation or other parts of a building or structure shall proceed at the holder's own risk with the building operation and without assurance that a permit for the entire structure will be granted.

SECTION 109 INSPECTION AND ENFORCEMENT

[A] 109.1 Inspection. Inspections shall be in accordance with Sections 109.1.1 through 109.1.4.3.

[A] 109.1.1 General. Construction or work for which a permit is required by this code shall be subject to inspection by the code official and such construction or work shall remain accessible and exposed for inspection purposes until *approved* by the code official.

It shall be the duty of the permit applicant to cause the work to remain accessible and exposed for inspection purposes. Neither the code official nor the jurisdiction shall be liable for expense entailed in the removal or replacement of any material required to allow inspection.

Approval as a result of an inspection shall not be construed to be an approval of a violation of the provisions of this code or of other ordinances of the jurisdiction. Inspec-

SCOPE AND ADMINISTRATION

tions presuming to give authority to violate or cancel the provisions of this code or of other ordinances of the jurisdiction shall not be valid.

Where required by the code official, a survey of the lot shall be provided to verify that the mitigation features are provided and the building or structure is located in accordance with the *approved* plans.

[A] 109.1.2 Authority to inspect. The code official shall inspect, as often as necessary, buildings and premises, including such other hazards or appliances designated by the code official for the purpose of ascertaining and causing to be corrected any conditions that could reasonably be expected to cause fire or contribute to its spread, or any violation of the purpose of this code and of any other law or standard affecting fire safety.

[A] 109.1.2.1 Approved inspection agencies. The code official is authorized to accept reports of *approved* inspection agencies, provided such agencies satisfy the requirements as to qualifications and reliability.

[A] 109.1.2.2 Inspection requests. It shall be the duty of the holder of the permit or their duly authorized agent to notify the code official when work is ready for inspection. It shall be the duty of the permit holder to provide access to and means for inspections of such work that are required by this code.

[A] 109.1.2.3 Approval required. Work shall not be done beyond the point indicated in each successive inspection without first obtaining the approval of the code official. The code official, upon notification, shall make the requested inspections and shall either indicate the portion of the construction that is satisfactory as completed, or notify the permit holder or his or her agent wherein the same fails to comply with this code. Any portions that do not comply shall be corrected and such portion shall not be covered or concealed until authorized by the code official.

[A] 109.1.3 Reinspections. To determine compliance with this code, the code official can cause a structure to be reinspected. A fee can be assessed for each inspection or reinspection when such portion of work for which inspection is called is not complete or when corrections called for are not made.

Reinspection fees can be assessed when the *approved* plans are not readily available to the inspector, for failure to provide access on the date for which inspection is requested or for deviating from plans requiring the approval of the code official.

To obtain a reinspection, the applicant shall pay the reinspection fee as set forth in the fee schedule adopted by the jurisdiction. Where reinspection fees have been assessed, additional inspection of the work will not be performed until the required fees have been paid.

[A] 109.1.4 Testing. Installations shall be tested as required in this code and in accordance with Sections 109.1.4.1 through 109.1.4.3. Tests shall be made by the permit holder or authorized agent and observed by the code official.

[A] 109.1.4.1 New, altered, extended or repaired installations. New installations and parts of existing installations that have been altered, extended, renovated or repaired, shall be tested as prescribed herein to disclose defects.

[A] 109.1.4.2 Apparatus, instruments, material and labor for tests. Apparatus, instruments, material and labor required for testing an installation or part thereof shall be furnished by the permit holder or authorized agent.

[A] 109.1.4.3 Reinspection and testing. Where any work or installation does not pass an initial test or inspection, the necessary corrections shall be made so as to achieve compliance with this code. The work or installation shall then be resubmitted to the code official for inspection and testing.

[A] 109.2 Enforcement. Enforcement shall be in accordance with Sections 109.2.1 and 109.2.2.

[A] 109.2.1 Authorization to issue corrective orders and notices. Where the code official finds any building or premises that are in violation of this code, the code official is authorized to issue corrective orders and notices.

[A] 109.2.2 Service of orders and notices. Orders and notices authorized or required by this code shall be given or served on the owner, the owner's authorized agent, operator, occupant or other person responsible for the condition or violation either by verbal notification, personal service, or delivering the same to, and leaving it with, a person of suitable age and discretion on the premises; or, if such person is not found on the premises, by affixing a copy thereof in a conspicuous place on the door to the entrance of said premises and by mailing a copy thereof to such person by registered or certified mail to the person's last known address.

Orders or notices that are given verbally shall be confirmed by service in writing as herein provided.

[A] 109.3 Right of entry. Where necessary to make an inspection to enforce any of the provisions of this code, or whenever the code official has reasonable cause to believe that there exists in any building or on any premises any condition that makes such building or premises unsafe, the code official is authorized to enter such building or premises at reasonable times to inspect the same or to perform any duty authorized by this code, provided that if such building or premises is occupied, the code official shall first present proper credentials and request entry; and if such building or premises is unoccupied, the code official shall first make a reasonable effort to locate the owner, the owner's authorized agent, or other persons having charge or control of the building or premises and request entry.

If such entry is refused, then the code official shall have recourse to every remedy provided by law to secure entry. Owners, the owner's authorized agent, occupants or any other persons having charge, care or control of any building or premises, shall, after proper request is made as herein provided, promptly permit entry therein by the code official for

the purpose of inspection and examination pursuant to this code.

[A] 109.4 Compliance with orders and notices. Compliance with orders and notices shall be in accordance with Sections 109.4.1 through 109.4.8.

[A] 109.4.1 General compliance. Orders and notices issued or served as provided by this code shall be complied with by the owner, the owner's authorized agent, operator, occupant or other person responsible for the condition or violation to which the corrective order or notice pertains.

If the building or premises is not occupied, then such corrective orders or notices shall be complied with by the owner or the owner's authorized agent.

[A] 109.4.2 Compliance with tags. A building or premises shall not be used when in violation of this code as noted on a tag affixed in accordance with Section 109.4.1.

[A] 109.4.3 Removal and destruction of signs and tags. A sign or tag posted or affixed by the code official shall not be mutilated, destroyed or removed without authorization by the code official.

[A] 109.4.4 Citations. Persons operating or maintaining an occupancy, premises or vehicle subject to this code who allow a hazard to exist or fail to take immediate action to abate a hazard on such occupancy, premises or vehicle when ordered or notified to do so by the code official shall be guilty of a misdemeanor.

[A] 109.4.5 Unsafe conditions. Buildings, structures or premises that constitute a fire hazard or are otherwise dangerous to human life, or that in relation to existing use constitute a hazard to safety or health or public welfare, by reason of inadequate maintenance, dilapidation, obsolescence, fire hazard, disaster damage or abandonment as specified in this code or any other ordinance, are unsafe conditions. Unsafe buildings or structures shall not be used. Unsafe buildings are hereby declared to be public nuisances and shall be abated by repair, rehabilitation, demolition or removal, pursuant to applicable state and local laws and codes.

[A] 109.4.5.1 Record. The code official shall cause a report to be filed on an unsafe condition. The report shall state the occupancy of the structure and the nature of the unsafe condition.

[A] 109.4.5.2 Notice. Where an unsafe condition is found, the code official shall serve on the owner, owner's authorized agent or person in control of the building, structure or premises, a written notice that describes the condition deemed unsafe and specifies the required repairs or improvements to be made to abate the unsafe condition, or requires the unsafe structure to be demolished. Such notice shall require the person thus notified, or their designee, to declare to the code official within a stipulated time, acceptance or rejection of the terms of the order.

[A] 109.4.5.2.1 Method of service. Such notice shall be deemed properly served where a copy thereof is served by one of the following methods:

1. Delivered to the owner or the owner's authorized agent personally.
2. Sent by certified or registered mail addressed to the owner or the owner's authorized agent at the last known address with a return receipt requested.
3. Delivered in any other manner as prescribed by local law.

Where the certified or registered letter is returned showing that the letter was not delivered, a copy thereof shall be posted in a conspicuous place in or about the structure affected by such notice. Service of such notice in the foregoing manner upon the owner's authorized agent or upon the person responsible for the structure shall constitute service of notice upon the owner.

[A] 109.4.5.3 Placarding. Upon failure of the owner, the owner's authorized agent or the person responsible to comply with the notice provisions within the time given, the code official shall post on the premises or on defective equipment a placard bearing the word "UNSAFE" and a statement of the penalties provided for occupying the premises, operating the equipment or removing the placard.

[A] 109.4.5.3.1 Placard removal. The code official shall remove the unsafe condition placard whenever the defect or defects upon which the unsafe condition and placarding action were based have been eliminated. Any person who defaces or removes an unsafe condition placard without the approval of the code official shall be subject to the penalties provided by this code.

[A] 109.4.5.4 Abatement. The owner, the owner's authorized agent, operator or occupant of a building, structure or premises deemed unsafe by the code official shall abate, correct or cause to be abated or corrected such unsafe conditions either by repair, rehabilitation, demolition or other *approved* corrective action.

[A] 109.4.5.5 Summary abatement. Where conditions exist that are deemed hazardous to life and property, the code official is authorized to abate or correct summarily such hazardous conditions that are in violation of this code.

[A] 109.4.5.6 Evacuation. The code official shall be authorized to order the immediate evacuation of any occupied building, structure or premises deemed unsafe where such hazardous conditions exist that present imminent danger to the occupants. Persons so notified shall immediately leave the structure or premises and shall not enter or reenter until authorized to do so by the code official.

SCOPE AND ADMINISTRATION

[A] **109.4.6 Prosecution of violation.** If the notice of violation is not complied with promptly, the code official is authorized to request the legal counsel of the jurisdiction to institute the appropriate proceeding at law or in equity to restrain, correct or abate such violation, or to require the removal or termination of the unlawful occupancy of the building or structure in violation of the provisions of this code or of the order or direction made pursuant thereto.

[A] **109.4.7 Violation penalties.** Persons who shall violate a provision of this code or shall fail to comply with any of the requirements thereof or who shall erect, install, alter, repair or do work in violation of the *approved* construction documents or directive of the code official, or of a permit or certificate used under provisions of this code, shall be guilty of a [SPECIFY OFFENSE], punishable by a fine of not more than [AMOUNT] dollars or by imprisonment not exceeding [NUMBER OF DAYS], or both such fine and imprisonment. Each day that a violation continues after due notice has been served shall be deemed a separate offense.

[A] **109.4.8 Abatement of violation.** In addition to the imposition of the penalties herein described, the code official is authorized to institute appropriate action to prevent unlawful construction or to restrain, correct or abate a violation; or to prevent illegal occupancy of a structure or premises; or to stop an illegal act, conduct of business or occupancy of a structure on or about any premises.

SECTION 110 CERTIFICATE OF COMPLETION

[A] **110.1 General.** A building, structure or premises shall not be used or occupied, and a change in the existing use or occupancy classification of a building, structure, premise or portion thereof shall not be made until the code official has issued a certificate of completion therefor as provided herein. The certificate of occupancy shall not be issued until the certificate of completion indicating that the project is in compliance with this code has been issued by the code official.

[A] **110.2 Certificate of occupancy.** Issuance of a certificate of occupancy shall not be construed as an approval of a violation of the provisions of this code or of other pertinent laws and ordinances of the jurisdiction. Certificates presuming to give authority to violate or cancel the provisions of this code or other laws or ordinances of the jurisdiction shall not be valid.

Exceptions:

1. Certificates of occupancy are not required for work exempt from permits under Section 107.3.
2. Accessory structures.

[A] **110.3 Temporary occupancy.** The code official is authorized to issue a temporary certificate of occupancy before the completion of the entire work covered by the permit, provided that such portion or portions shall be occupied safely. The code official shall set a time period during which the temporary certificate of occupancy is valid.

[A] **110.4 Revocation.** The code official is authorized to, in writing, suspend or revoke a certificate of occupancy or completion issued under the provisions of this code wherever the certificate is issued in error, on the basis of incorrect information supplied, or where it is determined that the building or structure, premise or portion thereof is in violation of any ordinance or regulation or any of the provisions of this code.

SECTION 111 TEMPORARY STRUCTURES AND USES

[A] **111.1 General.** The code official is authorized to issue a permit for temporary structures and temporary uses. Such permits shall be limited as to time of service, but shall not be permitted for more than 180 days. The code official is authorized to grant extensions for demonstrated cause.

[A] **111.2 Conformance.** Temporary structures and uses shall conform to the structural strength, fire safety, means of egress, accessibility, light, ventilation and sanitary requirements of this code as necessary to ensure the public health, safety and general welfare.

[A] **111.3 Termination of approval.** The code official is authorized to terminate such permit for a temporary structure or use and to order the temporary structure or use to be discontinued.

SECTION 112 FEES

[A] **112.1 Fees.** A permit shall not be issued until the fees prescribed in Section 112.2 have been paid, nor shall an amendment to a permit be released until the additional fee, if any, has been paid.

[A] **112.2 Schedule of permit fees.** A fee for each permit shall be paid as required, in accordance with the schedule as established by the applicable governing authority.

[A] **112.3 Work commencing before permit issuance.** Any person who commences any work before obtaining the necessary permits shall be subject to an additional fee established by the applicable governing authority, which shall be in addition to the required permit fees.

[A] **112.4 Related fees.** The payment of the fee for the construction, alteration, removal or demolition of work done in connection to or concurrently with the work or activity authorized by a permit shall not relieve the applicant or holder of the permit from the payment of other fees that are prescribed by law.

[A] **112.5 Refunds.** The applicable governing authority is authorized to establish a refund policy.

SECTION 113 SERVICE UTILITIES

[A] **113.1 Connection of service utilities.** No person shall make connections from a utility, source of energy, fuel or power to any building or system that is regulated by this code

for which a permit is required until released by the code official.

[A] 113.2 Authority to disconnect service utilities. The code official shall have the authority to authorize disconnection of utility service to the building, structure or system regulated by this code and the referenced codes and standards set forth in Section 102.4 in case of emergency where necessary to eliminate an immediate hazard to life or property or when such utility connection has been made without the release required by Section 113.1. The code official shall notify the serving utility and, whenever possible, the owner or the owner's authorized agent and the occupant of the building, structure or service system of the decision to disconnect prior to taking such action. If not notified prior to disconnection, the owner, the owner's authorized agent or the occupant of the building, structure or service system shall be notified in writing as soon as practical thereafter.

SECTION 114 STOP WORK ORDER

[A] 114.1 Authority. Whenever the code official finds any work regulated by this code being performed in a manner either contrary to the provisions of this code or dangerous or unsafe, the code official is authorized to issue a stop work order.

[A] 114.2 Issuance. The stop work order shall be in writing and shall be given to the owner of the property involved, to the owner's authorized agent or to the person doing the work. Upon issuance of a stop work order, the cited work shall immediately cease. The stop work order shall state the reason for the order and the conditions under which the cited work will be permitted to resume.

[A] 114.3 Emergencies. Where an emergency exists, the code official shall not be required to give a written notice prior to stopping the work.

[A] 114.4 Failure to comply. Any person who shall continue any work after having been served with a stop work order, except such work as that person is directed to perform to remove a violation or unsafe condition, shall be liable to a fine of not less than **[AMOUNT]** dollars or more than **[AMOUNT]** dollars.

CHAPTER 2

DEFINITIONS

SECTION 201 GENERAL

201.1 Scope. Unless otherwise expressly stated, the following words and terms shall, for the purposes of this code, have the meanings shown in this chapter.

201.2 Interchangeability. Words stated in the present tense include the future; words stated in the masculine gender include the feminine and neuter; and the singular number includes the plural and the plural the singular.

201.3 Terms defined in other codes. Where terms are not defined in this code and are defined in other *International Codes*, such terms shall have the meanings ascribed to them as in those codes.

201.4 Terms not defined. Where terms are not defined through the methods authorized by this section, such terms shall have their ordinarily accepted meanings such as the context implies.

SECTION 202 DEFINITIONS

ACCESSORY STRUCTURE. A building or structure used to shelter or support any material, equipment, chattel or occupancy other than a habitable building.

[A] APPROVED. Acceptable to the code official.

[A] BUILDING. Any structure used or intended for supporting or sheltering any use or occupancy.

[A] BUILDING OFFICIAL. The officer or other designated authority charged with the administration and enforcement of the *International Building Code*, or the building official's duly authorized representative.

CERTIFICATE OF COMPLETION. Written documentation that the project or work for which a permit was issued has been completed in conformance with requirements of this code.

CODE OFFICIAL. The official designated by the jurisdiction to interpret and enforce this code, or the code official's authorized representative.

CRITICAL FIRE WEATHER. A set of weather conditions (usually a combination of low relative humidity and wind) whose effects on fire behavior make control difficult and threaten fire fighter safety.

DEFENSIBLE SPACE. An area either natural or man-made, where material capable of allowing a fire to spread unchecked has been treated, cleared or modified to slow the rate and intensity of an advancing wildfire and to create an area for fire suppression operations to occur.

DRIVEWAY. A vehicular ingress and egress route that serves no more than two buildings or structures, not including accessory structures, or more than five dwelling units.

[BG] DWELLING. A building that contains one or two dwelling units used, intended or designed to be used, rented, leased, let or hired out to be occupied for living purposes.

[F] FIRE CHIEF. The chief officer or the chief officer's authorized representative of the fire department serving the jurisdiction.

FIRE FLOW CALCULATION AREA. The floor area, in square feet (square meters), used to determine the adequate water supply.

FIRE PROTECTION PLAN. A document prepared for a specific project or development proposed for the *wildland-urban interface area*. It describes ways to minimize and mitigate the fire problems created by the project or development, with the purpose of reducing impact on the community's fire protection delivery system.

FIRE WEATHER. Weather conditions favorable to the ignition and rapid spread of fire. In wildfires, this generally includes high temperatures combined with strong winds and low humidity. See "Critical fire weather."

FIRE-RESISTANCE-RATED CONSTRUCTION. The use of materials and systems in the design and construction of a building or structure to safeguard against the spread of fire within a building or structure and the spread of fire to or from buildings or structures to the *wildland-urban interface area*.

[BG] FLAME SPREAD INDEX. A comparative measure, expressed as a dimensionless number, derived from visual measurements of the spread of flame versus time for a material tested in accordance with ASTM E 84.

FUEL BREAK. An area, strategically located for fighting anticipated fires, where the native vegetation has been permanently modified or replaced so that fires burning into it can be more easily controlled. Fuel breaks divide fire-prone areas into smaller areas for easier fire control and to provide access for fire fighting.

FUEL, HEAVY. Vegetation consisting of round wood 3 to 8 inches (76 to 203 mm) in diameter. See Fuel Models G, I, J, K and U described in Appendix D.

FUEL, LIGHT. Vegetation consisting of herbaceous plants and round wood less than 1/4 inch (6.4 mm) in diameter. See Fuel Models A, C, E, L, N, P, R and S described in Appendix D.

FUEL, MEDIUM. Vegetation consisting of round wood 1/4 to 3 inches (6.4 mm to 76 mm) in diameter. See Fuel Models B, D, F, H, O, Q and T described in Appendix D.

FUEL MODIFICATION. A method of modifying fuel load by reducing the amount of nonfire-resistive vegetation or altering the type of vegetation to reduce the fuel load.

FUEL MOSAIC. A *fuel modification* system that provides for the creation of islands and irregular boundaries to reduce the visual and ecological impact of *fuel modification*.

DEFINITIONS

FUEL-LOADING. The oven-dry weight of fuels in a given area, usually expressed in pounds per acre (lb/a) (kg/ha). Fuel-loading may be referenced to fuel size or timelag categories, and may include surface fuels or total fuels.

GREEN BELT. A *fuel break* designated for a use other than fire protection.

HAZARDOUS MATERIALS. As defined in the *International Fire Code*.

HEAVY TIMBER CONSTRUCTION. As described in the *International Building Code*.

IGNITION-RESISTANT BUILDING MATERIAL. A type of building material that resists ignition or sustained flaming combustion sufficiently so as to reduce losses from wildland-urban interface conflagrations under worst-case weather and fuel conditions with wildfire exposure of burning embers and small flames, as prescribed in Section 503.

IGNITION-RESISTANT CONSTRUCTION, CLASS 1. A schedule of additional requirements for construction in wildland-urban interface areas based on extreme fire hazard.

IGNITION-RESISTANT CONSTRUCTION, CLASS 2. A schedule of additional requirements for construction in wildland-urban interface areas based on high fire hazard.

IGNITION-RESISTANT CONSTRUCTION, CLASS 3. A schedule of additional requirements for construction in wildland-urban interface areas based on moderate fire hazard.

LOG WALL CONSTRUCTION. A type of construction in which exterior walls are constructed of solid wood members and where the smallest horizontal dimension of each solid wood member is at least 6 inches (152 mm).

MULTILAYERED GLAZED PANELS. Window or door assemblies that consist of two or more independently glazed panels installed parallel to each other, having a sealed air gap in between, within a frame designed to fill completely the window or door opening in which the assembly is intended to be installed.

NONCOMBUSTIBLE. As applied to building construction material means a material that, in the form in which it is used, is either one of the following:

1. Material of which no part will ignite and burn when subjected to fire. Any material conforming to ASTM E 136 shall be considered noncombustible within the meaning of this section.
2. Material having a structural base of *noncombustible* material as defined in Item 1 above, with a surfacing material not over $\frac{1}{8}$ inch (3.2 mm) thick, which has a flame spread index of 50 or less. Flame spread index as used herein refers to a flame spread index obtained according to tests conducted as specified in ASTM E 84 or UL 723.

“Noncombustible” does not apply to surface finish materials. Material required to be noncombustible for reduced clearances to flues, heating appliances or other sources of high temperature shall refer to material conforming to Item 1. No material shall be classified as noncombustible that is subject

to increase in combustibility or flame spread index, beyond the limits herein established, through the effects of age, moisture or other atmospheric condition.

NONCOMBUSTIBLE ROOF COVERING. A roof covering consisting of any of the following:

1. Cement shingles or sheets.
2. Exposed concrete slab roof.
3. Ferrous or copper shingles or sheets.
4. Slate shingles.
5. Clay or concrete roofing tile.
6. *Approved* roof covering of *noncombustible* material.

SLOPE. The variation of terrain from the horizontal; the number of feet (meters) rise or fall per 100 feet (30 480 mm) measured horizontally, expressed as a percentage.

[A] STRUCTURE. That which is built or constructed, an edifice or building of any kind, or any piece of work artificially built up or composed of parts joined together in some manner.

[Z] SUBDIVISION. The division of a tract, lot or parcel of land into two or more lots, plats, sites or other divisions of land.

TREE CROWN. The primary and secondary branches growing out from the main stem, together with twigs and foliage.

UNENCLOSED ACCESSORY STRUCTURE. An accessory structure without a complete exterior wall system enclosing the area under roof or floor above.

WILDFIRE. An uncontrolled fire spreading through vegetative fuels, exposing and possibly consuming structures.

WILDLAND. An area in which development is essentially nonexistent, except for roads, railroads, power lines and similar facilities.

WILDLAND-URBAN INTERFACE AREA. That geographical area where structures and other human development meets or intermingles with wildland or vegetative fuels.

CHAPTER 3

WILDLAND-URBAN INTERFACE AREAS

SECTION 301 GENERAL

301.1 Scope. The provisions of this chapter provide methodology to establish and record wildland-urban interface areas based on the findings of fact.

301.2 Objective. The objective of this chapter is to provide simple baseline criteria for determining wildland-urban interface areas.

SECTION 302 WILDLAND-URBAN INTERFACE AREA DESIGNATIONS

302.1 Declaration. The legislative body shall declare the *wildland-urban interface areas* within the jurisdiction. The *wildland-urban interface areas* shall be based on the findings of fact. The *wildland-urban interface area* boundary shall correspond to natural or man-made features.

302.2 Mapping. The *wildland-urban interface areas* shall be recorded on maps available for inspection by the public.

302.3 Review of wildland-urban interface areas. The code official shall reevaluate and recommend modification to the *wildland-urban interface areas* in accordance with Section 302.1 on a 3-year basis or more frequently as deemed necessary by the legislative body.

CHAPTER 4

WILDLAND-URBAN INTERFACE AREA REQUIREMENTS

SECTION 401 GENERAL

401.1 Scope. *Wildland-urban interface areas* shall be provided with emergency vehicle access and water supply in accordance with this chapter.

401.2 Objective. The objective of this chapter is to establish the minimum requirements for emergency vehicle access and water supply for buildings and structures located in the *wildland-urban interface areas*.

401.3 General safety precautions. General safety precautions shall be in accordance with this chapter. See also Appendix A.

SECTION 402 APPLICABILITY

402.1 Subdivisions. Subdivisions shall comply with Sections 402.1.1 and 402.1.2.

402.1.1 Access. New subdivisions, as determined by this jurisdiction, shall be provided with fire apparatus access roads in accordance with the *International Fire Code* and access requirements in accordance with Section 403.

402.1.2 Water supply. New subdivisions as determined by this jurisdiction shall be provided with water supply in accordance with Section 404.

402.2 Individual structures. Individual structures shall comply with Sections 402.2.1 and 402.2.2.

402.2.1 Access. Individual structures hereafter constructed or relocated into or within *wildland-urban interface areas* shall be provided with fire apparatus access in accordance with the *International Fire Code* and driveways in accordance with Section 403.2. Marking of fire protection equipment shall be provided in accordance with Section 403.5 and address markers shall be provided in accordance with Section 403.6.

402.2.2 Water supply. Individual structures hereafter constructed or relocated into or within *wildland-urban interface areas* shall be provided with a conforming water supply in accordance with Section 404.

Exceptions:

1. Structures constructed to meet the requirements for the class of ignition-resistant construction specified in Table 503.1 for a nonconforming water supply.
2. Buildings containing only private garages, carports, sheds and agricultural buildings with a floor area of not more than 600 square feet (56 m²).

402.3 Existing conditions. Existing buildings shall be provided with address markers in accordance with Section 403.6.

Existing roads and fire protection equipment shall be provided with markings in accordance with Sections 403.4 and 403.5, respectively.

SECTION 403 ACCESS

403.1 Restricted access. Where emergency vehicle access is restricted because of secured access roads or driveways or where immediate access is necessary for life-saving or fire-fighting purposes, the code official is authorized to require a key box to be installed in an accessible location. The key box shall be of a type *approved* by the code official and shall contain keys to gain necessary access as required by the code official.

403.2 Driveways. Driveways shall be provided where any portion of an exterior wall of the first story of a building is located more than 150 feet (45 720 mm) from a fire apparatus access road.

403.2.1 Dimensions. Driveways shall provide a minimum unobstructed width of 12 feet (3658 mm) and a minimum unobstructed height of 13 feet 6 inches (4115 mm).

403.2.2 Length. Driveways in excess of 150 feet (45 720 mm) in length shall be provided with turnarounds. Driveways in excess of 200 feet (60 960 mm) in length and less than 20 feet (6096 mm) in width shall be provided with turnouts in addition to turnarounds.

403.2.3 Service limitations. A driveway shall not serve in excess of five dwelling units.

Exception: Where such driveways meet the requirements for fire apparatus access road in accordance with Section 503 of the *International Fire Code*.

403.2.4 Turnarounds. Driveway turnarounds shall have inside turning radii of not less than 30 feet (9144 mm) and outside turning radii of not less than 45 feet (13 716 mm). Driveways that connect with a road or roads at more than one point shall be considered as having a turnaround if all changes of direction meet the radii requirements for driveway turnarounds.

403.2.5 Turnouts. Driveway turnouts shall be an all-weather road surface not less than 10 feet (3048 mm) wide and 30 feet (9144 mm) long. Driveway turnouts shall be located as required by the code official.

403.2.6 Bridges. Vehicle load limits shall be posted at both entrances to bridges on driveways and private roads. Design loads for bridges shall be established by the code official.

403.3 Fire apparatus access road. Where required, fire apparatus access roads shall be all-weather roads with a minimum width of 20 feet (6096 mm) and a clear height of 13 feet 6 inches (4115 mm); shall be designed to accommodate the

WILDLAND-URBAN INTERFACE AREA REQUIREMENTS

loads and turning radii for fire apparatus; and shall have a gradient negotiable by the specific fire apparatus normally used at that location within the jurisdiction. Dead-end roads in excess of 150 feet (45 720 mm) in length shall be provided with turnarounds as *approved* by the code official. An all-weather road surface shall be any surface material acceptable to the code official that would normally allow the passage of emergency service vehicles typically used to respond to that location within the jurisdiction.

403.4 Marking of roads. *Approved* signs or other *approved* notices shall be provided and maintained for access roads and driveways to identify such roads and prohibit the obstruction thereof or both.

403.4.1 Sign construction. Road identification signs and supports shall be of noncombustible materials. Signs shall have minimum 4-inch-high (102 mm) reflective letters with $\frac{1}{2}$ -inch (12.7 mm) stroke on a contrasting 6-inch-high (152 mm) sign. Road identification signage shall be mounted at a height of 7 feet (2134 mm) from the road surface to the bottom of the sign.

403.5 Marking of fire protection equipment. Fire protection equipment and fire hydrants shall be clearly identified in a manner *approved* by the code official to prevent obstruction.

403.6 Address markers. Buildings shall have a permanently posted address, which shall be placed at each driveway entrance and be visible from both directions of travel along the road. In all cases, the address shall be posted at the beginning of construction and shall be maintained thereafter, and the address shall be visible and legible from the road on which the address is located.

403.6.1 Signs along one-way roads. Address signs along one-way roads shall be visible from both the intended direction of travel and the opposite direction.

403.6.2 Multiple addresses. Where multiple addresses are required at a single driveway, they shall be mounted on a single post, and additional signs shall be posted at locations where driveways divide.

403.6.3 Single business sites. Where a roadway provides access solely to a single commercial or industrial business, the address sign shall be placed at the nearest road intersection providing access to that site.

403.7 Grade. The gradient for fire apparatus access roads and driveways shall not exceed the maximum *approved* by the code official.

SECTION 404 WATER SUPPLY

404.1 General. Where provided in order to qualify as a conforming water supply for the purpose of Table 503.1 or as required for new subdivisions in accordance with Section 402.1.2, an *approved* water source shall have an adequate

water supply for the use of the fire protection service to protect buildings and structures from exterior fire sources or to suppress structure fires within the *wildland-urban interface area* of the jurisdiction in accordance with this section.

Exception: Buildings containing only private garages, carports, sheds and agricultural buildings with a floor area of not more than 600 square feet (56 m²).

404.2 Water sources. The point at which a water source is available for use shall be located not more than 1,000 feet (305 m) from the building and be *approved* by the code official. The distance shall be measured along an unobstructed line of travel.

Water sources shall comply with the following:

1. Man-made water sources shall have a minimum usable water volume as determined by the adequate water supply needs in accordance with Section 404.5. This water source shall be equipped with an *approved* hydrant. The water level of the water source shall be maintained by rainfall, water pumped from a well, water hauled by a tanker or by seasonal high water of a stream or river. The design, construction, location, water level maintenance, access and access maintenance of man-made water sources shall be *approved* by the code official.
2. Natural water sources shall have a minimum annual water level or flow sufficient to meet the adequate water supply needs in accordance with Section 404.5. This water level or flow shall not be rendered unusable because of freezing. This water source shall have an *approved* draft site with an *approved* hydrant. Adequate water flow and rights for access to the water source shall be ensured in a form acceptable to the code official.

404.3 Draft sites. *Approved* draft sites shall be provided at natural water sources intended for use as fire protection for compliance with this code. The design, construction, location, access and access maintenance of draft sites shall be *approved* by the code official.

404.3.1 Access. The draft site shall have emergency vehicle access from an access road in accordance with Section 403.

404.3.2 Pumper access points. The pumper access point shall be either an emergency vehicle access area alongside a conforming access road or an *approved* driveway not longer than 150 feet (45 720 mm). Pumper access points and access driveways shall be designed and constructed in accordance with all codes and ordinances enforced by this jurisdiction. Pumper access points shall not require the pumper apparatus to obstruct a road or driveway.

404.4 Hydrants. Hydrants shall be designed and constructed in accordance with nationally recognized standards. The location and access shall be *approved* by the code official.

404.5 Adequate water supply. Adequate water supply shall be determined for purposes of initial attack and flame front control as follows:

1. One- and two-family dwellings. The required water supply for one- and two-family dwellings having a fire flow calculation area that does not exceed 3,600 square feet (334 m²) shall be 1,000 gallons per minute (63.1 L/s) for a minimum duration of 30 minutes. The required water supply for one- and two-family dwellings having a fire flow calculation area in excess of 3,600 square feet (334 m²) shall be 1,500 gallons per minute (95 L/s) for a minimum duration of 30 minutes.

Exception: A reduction in required flow rate of 50 percent, as *approved* by the code official, is allowed where the building is provided with an *approved* automatic sprinkler system.

2. Buildings other than one- and two-family dwellings. The water supply required for buildings other than one- and two-family dwellings shall be as *approved* by the code official but shall be not less than 1,500 gallons per minute (95 L/s) for a duration of 2 hours.

Exception: A reduction in required flow rate of up to 75 percent, as *approved* by the code official, is allowed where the building is provided with an *approved* automatic sprinkler system. The resulting water supply shall not be less than 1,500 gallons per minute (94.6 L/s).

404.6 Fire department. The water supply required by this code shall only be approved where a fire department, rated Class 9 or better in accordance with ISO Commercial Rating Service, 1995, is available.

404.7 Obstructions. Access to water sources required by this code shall be unobstructed at all times. The code official shall not be deterred or hindered from gaining immediate access to water source equipment, fire protection equipment or hydrants.

404.8 Identification. Water sources, draft sites, hydrants and fire protection equipment and hydrants shall be clearly identified in a manner *approved* by the code official to identify location and to prevent obstruction by parking and other obstructions.

404.9 Testing and maintenance. Water sources, draft sites, hydrants and other fire protection equipment required by this code shall be subject to periodic tests as required by the code official. All such equipment installed under the provisions of this code shall be maintained in an operative condition at all times and shall be repaired or replaced where defective. Additions, repairs, alterations and servicing of such fire protection equipment and resources shall be in accordance with *approved* standards.

404.10 Reliability. Water supply reliability shall comply with Sections 404.10.1 through 404.10.3.

404.10.1 Objective. The objective of this section is to increase the reliability of water supplies by reducing the exposure of vegetative fuels to electrically powered systems.

404.10.2 Clearance of fuel. *Defensible space* shall be provided around water tank structures, water supply pumps and pump houses in accordance with Section 603.

404.10.3 Standby power. Standby power shall be provided to pumps, controllers and related electrical equipment so that stationary water supply facilities within the *wildland-urban interface area* that are dependent on electrical power can provide the required water supply. The standby power system shall be in accordance with Section 2702 of the *International Building Code*, and Section 604 of the *International Fire Code*. The standby power source shall be capable of providing power for not less than 2 hours.

Exceptions:

1. Where *approved* by the code official, a standby power supply is not required where the primary power service to the stationary water supply facility is underground.
2. A standby power supply is not required where the stationary water supply facility serves not more than one single-family dwelling.

SECTION 405 FIRE PROTECTION PLAN

405.1 General. Where required by the code official, a fire protection plan shall be prepared.

405.2 Content. The plan shall be based upon a site-specific wildfire risk assessment that includes considerations of location, topography, aspect, flammable vegetation, climatic conditions and fire history. The plan shall address water supply, access, building ignition and fire-resistance factors, fire protection systems and equipment, *defensible space* and vegetation management.

405.3 Cost. The cost of fire protection plan preparation and review shall be the responsibility of the applicant.

405.4 Plan retention. The fire protection plan shall be retained by the code official.

CHAPTER 5

SPECIAL BUILDING CONSTRUCTION REGULATIONS

SECTION 501 GENERAL

501.1 Scope. Buildings and structures shall be constructed in accordance with the *International Building Code* and this code.

Exceptions:

1. Accessory structures not exceeding 120 square feet (11 m²) in floor area where located not less than 50 feet (15 240 mm) from buildings containing habitable spaces.
2. Agricultural buildings not less than 50 feet (15 240 mm) from buildings containing habitable spaces.

501.2 Objective. The objective of this chapter is to establish minimum standards to locate, design and construct buildings and structures or portions thereof for the protection of life and property, to resist damage from wildfires, and to mitigate building and structure fires from spreading to wildland fuels. The minimum standards set forth in this chapter vary with the critical *fire weather*, slope and fuel type to provide increased protection, above the requirements set forth in the *International Building Code*, from the various levels of hazards.

501.3 Fire-resistance-rated construction. Where this code requires 1-hour fire-resistance-rated construction, the fire-resistance rating of building elements, components or assemblies shall be determined in accordance with the test procedures set forth in ASTM E 119 or UL 263.

Exceptions:

1. The fire-resistance rating of building elements, components or assemblies based on the prescriptive designs prescribed in Section 721 of the *International Building Code*.
2. The fire-resistance rating of building elements, components or assemblies based on the calculation procedures in accordance with Section 722 of the *International Building Code*.

SECTION 502 FIRE HAZARD SEVERITY

502.1 General. The fire hazard severity of building sites for buildings hereafter constructed, modified or relocated into *wildland-urban interface areas* shall be established in accordance with Table 502.1. See also Appendix C.

502.2 Fire hazard severity reduction. The fire hazard severity identified in Table 502.1 is allowed to be reduced by implementing a vegetation management plan in accordance with Appendix B.

SECTION 503 IGNITION-RESISTANT CONSTRUCTION AND MATERIAL

503.1 General. Buildings and structures hereafter constructed, modified or relocated into or within *wildland-urban interface areas* shall meet the construction requirements in accordance with Table 503.1. Class 1, Class 2 or Class 3, ignition-resistant construction shall be in accordance with Sections 504, 505 and 506, respectively. Materials required to be ignition-resistant materials shall comply with the requirements of Section 503.2.

503.2 Ignition-resistant building material. Ignition-resistant building materials shall comply with any one of the following:

1. Material shall be tested on all sides with the extended ASTM E 84 (UL 723) test or ASTM E 2768, except panel products shall be permitted to test only the front and back faces. Panel products shall be tested with a ripped or cut longitudinal gap of $\frac{1}{8}$ inch (3.2 mm). Materials that, when tested in accordance with the test procedures set forth in ASTM E 84 or UL 723 for a test period of 30 minutes, or with ASTM E 2768, comply with the following:
 - 1.1. Flame spread. Material shall exhibit a flame spread index not exceeding 25 and shall not

**TABLE 502.1
FIRE HAZARD SEVERITY**

FUEL MODEL ^b	CRITICAL FIRE WEATHER FREQUENCY								
	≤ 1 Day ^a			2 to 7 days ^a			≥ 8 days ^a		
	Slope (%)			Slope (%)			Slope (%)		
	≤ 40	41-60	≥ 61	≤ 40	41-60	≥ 61	≤ 40	41-60	≥ 61
Light fuel	M	M	M	M	M	M	M	M	H
Medium fuel	M	M	H	H	H	H	E	E	E
Heavy fuel	H	H	H	H	E	E	E	E	E

E = Extreme hazard;

H = High hazard;

M = Moderate hazard.

a. Days per annum.

b. Where required by the code official, fuel classification shall be based on the historical fuel type for the area.

SPECIAL BUILDING CONSTRUCTION REGULATIONS

show evidence of progressive combustion following the extended 30-minute test.

- 1.2. Flame front. Material shall exhibit a flame front that does not progress more than 10¹/₂ feet (3200 mm) beyond the centerline of the burner at any time during the extended 30-minute test.
- 1.3. Weathering. Ignition-resistant building materials shall maintain their performance in accordance with this section under conditions of use. Materials shall meet the performance requirements for weathering (including exposure to temperature, moisture and ultraviolet radiation) contained in the following standards, as applicable to the materials and the conditions of use:
 - 1.3.1. Method A “Test Method for Accelerated Weathering of Fire-Retardant-Treated Wood for Fire Testing” in ASTM D 2898, for fire-retardant-treated wood, wood-plastic composite and plastic lumber materials.
 - 1.3.2. ASTM D 7032 for wood-plastic composite materials.
 - 1.3.3. ASTM D 6662 for plastic lumber materials.
- 1.4. Identification. All materials shall bear identification showing the fire test results.

Exception: Materials comprised of a combustible core and a noncombustible exterior covering, comprised of either aluminum at a minimum 0.019 inch (0.48 mm) thickness or corrosion-resistant steel at a minimum 0.0149 inch (0.38 mm) thickness shall not be required to be tested with a ripped or cut longitudinal gap.

2. Noncombustible material. Material that complies with the requirements for *noncombustible* materials in Section 202.

3. Fire-retardant-treated wood. Fire-retardant-treated wood identified for exterior use and meeting the requirements of Section 2303.2 of the *International Building Code*.
4. Fire-retardant-treated wood roof coverings. Roof assemblies containing fire-retardant-treated wood shingles and shakes that comply with the requirements of Section 1505.6 of the *International Building Code* and classified as Class A roof assemblies as required in Section 1505.2 of the *International Building Code*.

SECTION 504

CLASS 1 IGNITION-RESISTANT CONSTRUCTION

504.1 General. Class 1 ignition-resistant construction shall be in accordance with Sections 504.2 through 504.11.

504.2 Roof covering. Roofs shall have a roof assembly that complies with a Class A rating when tested in accordance with ASTM E 108 or UL 790. For roof coverings where the profile allows a space between the roof covering and roof decking, the space at the eave ends shall be firestopped to preclude entry of flames or embers, or have one layer of 72-pound (32.4 kg) mineral-surfaced, nonperforated cap sheet complying with ASTM D 3909 installed over the combustible decking.

Exceptions:

1. Class A roof assemblies include those with coverings of brick, masonry or an exposed concrete roof deck.
2. Class A roof assemblies also include ferrous or copper shingles or sheets, metal sheets and shingles, clay or concrete roof tile or slate installed on noncombustible decks or ferrous, copper or metal sheets installed without a roof deck on noncombustible framing.

TABLE 503.1
IGNITION-RESISTANT CONSTRUCTION^a

DEFENSIBLE SPACE ^c	FIRE HAZARD SEVERITY					
	Moderate Hazard		High Hazard		Extreme Hazard	
	Water Supply ^b		Water Supply ^b		Water Supply ^b	
	Conforming ^d	Nonconforming ^e	Conforming ^d	Nonconforming ^e	Conforming ^d	Nonconforming ^e
Nonconforming	IR 2	IR 1	IR 1	IR 1 N.C.	IR 1 N.C.	Not Permitted
Conforming	IR 3	IR 2	IR 2	IR 1	IR 1	IR 1 N.C.
1.5 × Conforming	Not Required	IR 3	IR 3	IR 2	IR 2	IR 1

a. Access shall be in accordance with Section 403.

b. Subdivisions shall have a conforming water supply in accordance with Section 402.1.

IR 1 = Ignition-resistant construction in accordance with Section 504.

IR 2 = Ignition-resistant construction in accordance with Section 505.

IR 3 = Ignition-resistant construction in accordance with Section 506.

N.C. = Exterior walls shall have a fire-resistance rating of not less than 1 hour and the exterior surfaces of such walls shall be *noncombustible*. Usage of log wall construction is allowed.

c. Conformance based on Section 603.

d. Conformance based on Section 404.

e. A nonconforming water supply is any water system or source that does not comply with Section 404, including situations where there is no water supply for structure protection or fire suppression.

3. Class A roof assemblies include minimum 16 oz/sq. ft. (0.0416 kg/m²) copper sheets installed over combustible decks.

504.2.1 Roof valleys. When provided, valley flashings shall be not less than 0.019 inch (0.48 mm) (No. 26 galvanized sheet gage) corrosion-resistant metal installed over a minimum 36-inch-wide (914 mm) underlayment consisting of one layer of 72-pound (32.4 kg) mineral-surfaced, nonperforated cap sheet complying with ASTM D 3909 running the full length of the valley.

504.3 Protection of eaves. Eaves and soffits shall be protected on the exposed underside by ignition-resistant materials or by materials *approved* for not less than 1-hour fire-resistance-rated construction, 2-inch (51 mm) nominal dimension lumber, or 1-inch (25 mm) nominal fire-retardant-treated lumber or 3/4-inch (19.1 mm) nominal fire-retardant-treated plywood, identified for exterior use and meeting the requirements of Section 2303.2 of the *International Building Code*. Fascias are required and shall be protected on the backside by ignition-resistant materials or by materials *approved* for not less than 1-hour fire-resistance-rated construction or 2-inch (51 mm) nominal dimension lumber.

504.4 Gutters and downspouts. Gutters and downspouts shall be constructed of *noncombustible* material. Gutters shall be provided with an *approved* means to prevent the accumulation of leaves and debris in the gutter.

504.5 Exterior walls. Exterior walls of buildings or structures shall be constructed with one of the following methods:

1. Materials *approved* for not less than 1-hour fire-resistance-rated construction on the exterior side.
2. *Approved noncombustible* materials.
3. Heavy timber or log wall construction.
4. Fire-retardant-treated wood on the exterior side. The fire-retardant-treated wood shall be labeled for exterior use and meet the requirements of Section 2303.2 of the *International Building Code*.
5. Ignition-resistant materials on the exterior side.

Such material shall extend from the top of the foundation to the underside of the roof sheathing.

504.6 Underfloor enclosure. Buildings or structures shall have underfloor areas enclosed to the ground with exterior walls in accordance with Section 504.5.

Exception: Complete enclosure shall not be required where the underside of exposed floors and exposed structural columns, beams and supporting walls are protected as required for exterior 1-hour fire-resistance-rated construction or heavy timber construction or fire-retardant-treated wood. The fire-retardant-treated wood shall be labeled for exterior use and meet the requirements of Section 2303.2 of the *International Building Code*.

504.7 Appendages and projections. *Unenclosed accessory structures* attached to buildings with habitable spaces and projections, such as decks, shall be not less than 1-hour fire-

resistance-rated construction, heavy timber construction or constructed of one of the following:

1. *Approved noncombustible* materials.
2. Fire-retardant-treated wood identified for exterior use and meeting the requirements of Section 2303.2 of the *International Building Code*.
3. Ignition-resistant building materials in accordance with Section 503.2.

504.7.1 Underfloor areas. Where the attached structure is located and constructed so that the structure or any portion thereof projects over a descending slope surface greater than 10 percent, the area below the structure shall have underfloor areas enclosed to within 6 inches (152 mm) of the ground, with exterior wall construction in accordance with Section 504.5.

504.8 Exterior glazing. Exterior windows, window walls and glazed doors, windows within exterior doors, and skylights shall be tempered glass, multilayered glazed panels, glass block or have a fire protection rating of not less than 20 minutes.

504.9 Exterior doors. Exterior doors shall be *approved noncombustible* construction, solid core wood not less than 1 3/4 inches thick (44 mm), or have a fire protection rating of not less than 20 minutes. Windows within doors and glazed doors shall be in accordance with Section 504.8.

Exception: Vehicle access doors.

504.10 Vents. Attic ventilation openings, foundation or underfloor vents, or other ventilation openings in vertical exterior walls and vents through roofs shall not exceed 144 square inches (0.0929 m²) each. Such vents shall be covered with *noncombustible* corrosion-resistant mesh with openings not to exceed 1/4 inch (6.4 mm), or shall be designed and *approved* to prevent flame or ember penetration into the structure.

504.10.1 Vent locations. Attic ventilation openings shall not be located in soffits, in eave overhangs, between rafters at eaves, or in other overhang areas. Gable end and dormer vents shall be located not less than 10 feet (3048 mm) from lot lines. Underfloor ventilation openings shall be located as close to grade as practical.

504.11 Detached accessory structures. Detached accessory structures located less than 50 feet (15 240 mm) from a building containing habitable space shall have exterior walls constructed with materials *approved* for not less than 1-hour fire-resistance-rated construction, heavy timber, log wall construction, or constructed with *approved noncombustible* materials or fire-retardant-treated wood on the exterior side. The fire-retardant-treated wood shall be labeled for exterior use and meet the requirements of Section 2303.2 of the *International Building Code*.

504.11.1 Underfloor areas. Where the detached structure is located and constructed so that the structure or any portion thereof projects over a descending slope surface greater than 10 percent, the area below the structure shall

SPECIAL BUILDING CONSTRUCTION REGULATIONS

have underfloor areas enclosed to within 6 inches (152 mm) of the ground, with exterior wall construction in accordance with Section 504.5 or underfloor protection in accordance with Section 504.6.

Exception: The enclosure shall not be required where the underside of exposed floors and exposed structural columns, beams and supporting walls are protected as required for exterior 1-hour fire-resistance-rated construction or heavy-timber construction or fire-retardant-treated wood on the exterior side. The fire-retardant-treated wood shall be labeled for exterior use and meet the requirements of Section 2303.2 of the *International Building Code*.

SECTION 505

CLASS 2 IGNITION-RESISTANT CONSTRUCTION

505.1 General. Class 2 ignition-resistant construction shall be in accordance with Sections 505.2 through 505.11.

505.2 Roof covering. Roofs shall have at least a roof assembly that complies with a Class B rating when tested in accordance with ASTM E 108 or UL 790 or an *approved noncombustible roof covering*. For roof coverings where the profile allows a space between the roof covering and roof decking, the space at the eave ends shall be firestopped to preclude entry of flames or embers, or have one layer of 72-pound (32.4 kg) mineral-surfaced, nonperforated cap sheet complying with ASTM D 3909 installed over the combustible decking.

505.2.1 Roof valleys. Where provided, valley flashings shall be not less than 0.019-inch (0.48 mm) (No. 26 galvanized sheet gage) corrosion-resistant metal installed over a minimum 36-inch-wide (914 mm) underlayment consisting of one layer of 72-pound (32.4 kg) mineral-surfaced, nonperforated cap sheet complying with ASTM D 3909 running the full length of the valley.

505.3 Protection of eaves. Combustible eaves, fascias and soffits shall be enclosed with solid materials with a minimum thickness of $\frac{3}{4}$ inch (19 mm). Exposed rafter tails shall not be permitted unless constructed of heavy timber materials.

505.4 Gutters and downspouts. Gutters and downspouts shall be constructed of *noncombustible* material. Gutters shall be provided with an *approved* means to prevent the accumulation of leaves and debris in the gutter.

505.5 Exterior walls. Exterior walls of buildings or structures shall be constructed with one of the following methods:

1. Materials *approved* for a minimum of 1-hour fire-resistance-rated construction on the exterior side.
2. *Approved noncombustible* materials.
3. Heavy timber or log wall construction.
4. Fire-retardant-treated wood on the exterior side. The fire-retardant-treated wood shall be labeled for exterior use and meet the requirements of Section 2303.2 of the *International Building Code*.
5. Ignition-resistant materials on the exterior side.

Such material shall extend from the top of the foundation to the underside of the roof sheathing.

505.6 Underfloor enclosure. Buildings or structures shall have underfloor areas enclosed to the ground, with exterior walls in accordance with Section 505.5.

Exception: Complete enclosure shall not be required where the underside of exposed floors and exposed structural columns, beams and supporting walls are protected as required for exterior 1-hour fire-resistance-rated construction or heavy timber construction or fire-retardant-treated wood. The fire-retardant-treated wood shall be labeled for exterior use and meet the requirements of Section 2303.2 of the *International Building Code*.

505.7 Appendages and projections. *Unenclosed accessory structures* attached to buildings with habitable spaces and projections, such as decks, shall be not less than 1-hour fire-resistance-rated construction, heavy timber construction or constructed of one of the following:

1. *Approved noncombustible* materials.
2. Fire-retardant-treated wood identified for exterior use and meeting the requirements of Section 2303.2 of the *International Building Code*.
3. Ignition-resistant building materials in accordance with Section 503.2.

505.7.1 Underfloor areas. Where the attached structure is located and constructed so that the structure or any portion thereof projects over a descending slope surface greater than 10 percent, the area below the structure shall have underfloor areas enclosed to within 6 inches (152 mm) of the ground, with exterior wall construction in accordance with Section 505.5.

505.8 Exterior glazing. Exterior windows, window walls and glazed doors, windows within exterior doors, and skylights shall be tempered glass, multilayered glazed panels, glass block or have a fire protection rating of not less than 20 minutes.

505.9 Exterior doors. Exterior doors shall be *approved noncombustible* construction, solid core wood not less than $1\frac{3}{4}$ inches thick (45 mm), or have a fire protection rating of not less than 20 minutes. Windows within doors and glazed doors shall be in accordance with Section 505.8.

Exception: Vehicle access doors.

505.10 Vents. Attic ventilation openings, foundation or underfloor vents or other ventilation openings in vertical exterior walls and vents through roofs shall not exceed 144 square inches (0.0929 m²) each. Such vents shall be covered with *noncombustible* corrosion-resistant mesh with openings not to exceed $\frac{1}{4}$ inch (6.4 mm) or shall be designed and *approved* to prevent flame or ember penetration into the structure.

505.10.1 Vent locations. Attic ventilation openings shall not be located in soffits, in eave overhangs, between rafters at eaves, or in other overhang areas. Gable end and dormer vents shall be located not less than 10 feet (3048 mm) from lot lines. Underfloor ventilation openings shall be located as close to grade as practical.

505.11 Detached accessory structures. Detached accessory structures located less than 50 feet (15 240 mm) from a building containing habitable space shall have exterior walls constructed with materials *approved* for not less than 1-hour fire-resistance-rated construction, heavy timber, log wall construction, or constructed with *approved noncombustible* materials or fire-retardant-treated wood on the exterior side. The fire-retardant-treated wood shall be labeled for exterior use and meet the requirements of Section 2303.2 of the *International Building Code*.

505.11.1 Underfloor areas. Where the detached accessory structure is located and constructed so that the structure or any portion thereof projects over a descending slope surface greater than 10 percent, the area below the structure shall have underfloor areas enclosed to within 6 inches (152 mm) of the ground, with exterior wall construction in accordance with Section 505.5 or underfloor protection in accordance with Section 505.6.

Exception: The enclosure shall not be required where the underside of exposed floors and exposed structural columns, beams and supporting walls are protected as required for exterior 1-hour fire-resistance-rated construction or heavy-timber construction or fire-retardant-treated wood on the exterior side. The fire-retardant-treated wood shall be labeled for exterior use and meet the requirements of Section 2303.2 of the *International Building Code*.

SECTION 506

CLASS 3 IGNITION-RESISTANT CONSTRUCTION

506.1 General. Class 3 ignition-resistant construction shall be in accordance with Sections 506.2 through 506.4.

506.2 Roof covering. Roofs shall have at least a roof assembly that complies with a Class C rating when tested in accordance with ASTM E 108 or UL 790 or an *approved noncombustible* roof covering. For roof coverings where the profile allows a space between the roof covering and roof decking, the space at the eave ends shall be firestopped to preclude entry of flames or embers, or have one layer of 72-pound (32.4 kg) mineral-surfaced, nonperforated cap sheet complying with ASTM D 3909 installed over the combustible decking.

506.2.1 Roof valleys. Where provided, valley flashings shall be not less than 0.019-inch (0.44 mm) (No. 26 galvanized sheet gage) corrosion-resistant metal installed over a minimum 36-inch-wide (914 mm) underlayment consisting of one layer of 72-pound (32.4 kg) mineral-surfaced, nonperforated cap sheet complying with ASTM D 3909 running the full length of the valley.

506.3 Underfloor enclosure. Buildings or structures shall have underfloor areas enclosed to the ground with exterior walls.

Exception: Complete enclosure shall not be required where the underside of exposed floors and exposed structural columns, beams and supporting walls are protected as required for exterior 1-hour fire-resistance-rated construction or heavy timber construction.

506.4 Gutters and downspouts. Gutters and downspouts shall be constructed of *noncombustible* material. Gutters shall be provided with an *approved* means to prevent the accumulation of leaves and debris in the gutter.

SECTION 507

REPLACEMENT OR REPAIR OF ROOF COVERINGS

507.1 General. The roof covering on buildings or structures in existence prior to the adoption of this code that are replaced or have 25 percent or more replaced in a 12-month period shall be replaced with a roof covering required for new construction based on the type of ignition-resistant construction specified in accordance with Section 503.

CHAPTER 6

FIRE PROTECTION REQUIREMENTS

SECTION 601 GENERAL

601.1 Scope. The provisions of this chapter establish general requirements for new and existing buildings, structures and premises located within *wildland-urban interface areas*.

601.2 Objective. The objective of this chapter is to establish minimum requirements to mitigate the risk to life and property from wildland fire exposures, exposures from adjacent structures and to mitigate structure fires from spreading to wildland fuels.

SECTION 602 AUTOMATIC SPRINKLER SYSTEMS

602.1 General. An *approved* automatic sprinkler system shall be installed in all occupancies in new buildings required to meet the requirements for Class 1 ignition-resistant construction in Chapter 5. The installation of the automatic sprinkler systems shall be in accordance with nationally recognized standards.

SECTION 603 DEFENSIBLE SPACE

603.1 Objective. Provisions of this section are intended to modify the fuel load in areas adjacent to structures to create a *defensible space*.

603.2 Fuel modification. Buildings or structures, constructed in compliance with the conforming *defensible space* category of Table 503.1, shall comply with the *fuel modification* dis-

tances contained in Table 603.2. For all other purposes the *fuel modification* distance shall not be less than 30 feet (9144 mm) or to the lot line, whichever is less. Distances specified in Table 603.2 shall be measured on a horizontal plane from the perimeter or projection of the building or structure as shown in Figure 603.2. Distances specified in Table 603.2 are allowed to be increased by the code official because of a site-specific analysis based on local conditions and the fire protection plan.

**TABLE 603.2
REQUIRED DEFENSIBLE SPACE**

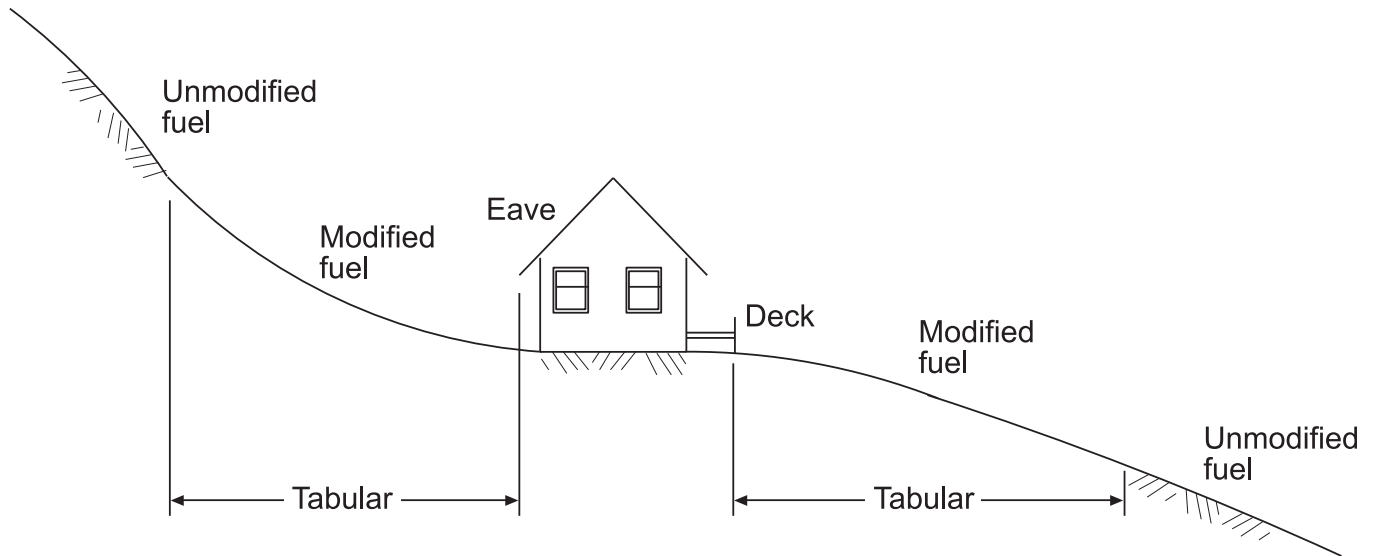
WILDLAND-URBAN INTERFACE AREA	FUEL MODIFICATION DISTANCE (feet) ^a
Moderate hazard	30
High hazard	50
Extreme hazard	100

For SI: 1 foot = 304.8 mm.

a. Distances are allowed to be increased due to site-specific analysis based on local conditions and the fire protection plan.

603.2.1 Responsible party. Persons owning, leasing, controlling, operating or maintaining buildings or structures requiring defensible spaces are responsible for modifying or removing nonfire-resistive vegetation on the property owned, leased or controlled by said person.

603.2.2 Trees. Trees are allowed within the *defensible space*, provided the horizontal distance between crowns of adjacent trees and crowns of trees and structures, overhead electrical facilities or unmodified fuel is not less than 10 feet (3048 mm).



**FIGURE 603.2
MEASUREMENTS OF FUEL MODIFICATION DISTANCE**

FIRE PROTECTION REQUIREMENTS

603.2.3 Groundcover. Deadwood and litter shall be regularly removed from trees. Where ornamental vegetative fuels or cultivated ground cover, such as green grass, ivy, succulents or similar plants are used as ground cover, they are allowed to be within the designated *defensible space*, provided they do not form a means of transmitting fire from the native growth to any structure.

SECTION 604 MAINTENANCE OF DEFENSIBLE SPACE

604.1 General. Defensible spaces required by Section 603 shall be maintained in accordance with Section 604.

604.2 Modified area. Nonfire-resistive vegetation or growth shall be kept clear of buildings or structures, in accordance with Section 603, in such a manner as to provide a clear area for fire suppression operations.

604.3 Responsibility. Persons owning, leasing, controlling, operating or maintaining buildings or structures are responsible for maintenance of *defensible spaces*. Maintenance of the *defensible space* shall include modifying or removing non-fire-resistive vegetation and keeping leaves, needles and other dead vegetative material regularly removed from roofs of buildings and structures.

604.4 Trees. Tree crowns extending to within 10 feet (3048 mm) of any structure shall be pruned to maintain a minimum horizontal clearance of 10 feet (3048 mm). Tree crowns within the *defensible space* shall be pruned to remove limbs located less than 6 feet (1829 mm) above the ground surface adjacent to the trees.

604.4.1 Chimney clearance. Portions of tree crowns that extend to within 10 feet (3048 mm) of the outlet of a chimney shall be pruned to maintain a minimum horizontal clearance of 10 feet (3048 mm).

604.4.2 Deadwood removed. Deadwood and litter shall be regularly removed from trees.

SECTION 605 SPARK ARRESTERS

605.1 General. Chimneys serving fireplaces, barbecues, incinerators or decorative heating appliances in which solid or liquid fuel is used, shall be provided with a spark arrester. Spark arresters shall be constructed of woven or welded wire screening of 12 USA standard gage wire (0.1046 inch) (2.66 mm) having openings not exceeding $\frac{1}{2}$ inch (12.7 mm).

605.2 Net free area. The net free area of the spark arrester shall not be less than four times the net free area of the outlet of the chimney.

SECTION 606 LIQUEFIED PETROLEUM GAS INSTALLATIONS

606.1 General. The storage of liquefied petroleum gas (LP-gas) and the installation and maintenance of pertinent equipment shall be in accordance with the *International Fire Code* or, in the absence thereof, recognized standards.

606.2 Location of containers or tanks. LP-gas containers or tanks shall be located within the *defensible space* in accordance with the *International Fire Code*.

SECTION 607 STORAGE OF FIREWOOD AND COMBUSTIBLE MATERIALS

607.1 General. Firewood and combustible material shall not be stored in unenclosed spaces beneath buildings or structures, or on decks or under eaves, canopies or other projections or overhangs. When required by the code official, storage of firewood and combustible material stored in the *defensible space* shall be located a minimum of 20 feet (6096 mm) from structures and separated from the crown of trees by a minimum horizontal distance of 15 feet (4572 mm).

607.2 Storage for off-site use. Firewood and combustible materials not for consumption on the premises shall be stored so as to not pose a hazard. See Appendix A.

CHAPTER 7

REFERENCED STANDARDS

This chapter lists the standards that are referenced in various sections of this document. The standards are listed herein by the promulgating agency of the standard, the standard identification, the effective date and title, and the section or sections of this document that reference the standard.

Standard reference number	Title	Referenced in code section number
<div style="display: flex; justify-content: space-between; align-items: flex-start;"> <div style="font-size: 2em; font-weight: bold; margin-right: 20px;">ASTM</div> <div> ASTM International 100 Barr Harbor Drive West Conshohocken, PA 19428-2959 </div> </div>		
D 2898—10	Standard Test Methods for Accelerated Weathering of Fire-Retardant-Treated Wood for Fire Testing503.2
D 3201—13	Standard Test Methods for Hygroscopic Properties of Fire-Retardant Wood and Wood-based Products.503.2
D 3909/D3909M—97b (2012e1)	Standard Specification for Asphalt Roll Roofing (Glass Felt) Surfaced with Mineral Granules504.2, 504.2.1, 505.2, 505.2.1, 506.2, 506.2.1
D 6662—13	Standard Specification for Polyolefin-based Plastic Lumber Decking Boards503.2
D 7032—10a	Standard Specification for Establishing Performance Ratings for Wood-plastic Composite Deck Boards and Guardrail Systems (Guards or Handrails).503.2
E 84—2013A	Test Method for Surface-Burning Characteristics of Building Materials202, 503.2
E 108—11	Standard Test Methods for Fire Tests of Roof Coverings504.2, 505.2, 506.2
E 119—2012a	Standard Test Methods for Fire Tests of Building Construction and Materials501.3
E 136—2012	Test Method for Behavior of Materials in a Vertical Tube Furnace at 750°C.	202
E 1354—13	Standard Test Method for Heat and Visible Smoke Release Rates for Materials and Products Using and Oxygen Consumption Calorimeter	504.7, 505.7
E 2632/E2632—13E1	Standard Test Method for Evaluating the Under-Deck Fire Test Response of Deck Materials	504.7, 505.7
E 2768—2011	Standard Test Method for Extended Duration Surface Burning Characteristics of Building Materials (30 Minute Tunnel Test).503.2

Standard reference number	Title	Referenced in code section number
<div style="display: flex; justify-content: space-between; align-items: flex-start;"> <div style="font-size: 2em; font-weight: bold; margin-right: 20px;">ICC</div> <div> International Code Council, Inc. 500 New Jersey Ave, NW 6th Floor Washington, DC 20001 </div> </div>		
IBC—15	International Building Code®	103.3, 107.1, 107.3, 108.3, 202, 404.10.3, 501.1, 501.2, 501.3, 503.2, 504.3, 504.5, 504.6, 504.7, 504.11, 505.5, 505.6, 505.7, 505.11, A107.5
IFC—15	International Fire Code®	102.6, 107.1, 107.3, 202, 402.1.1, 402.2.1, 403.2, 403.2.3, 404.10.3, 606.1, 606.2, A104.6, A105.1, A107.5
IPMC—15	International Property Maintenance Code®	102.6

Standard reference number	Title	Referenced in code section number
<div style="display: flex; justify-content: space-between; align-items: flex-start;"> <div style="font-size: 2em; font-weight: bold; margin-right: 20px;">NFPA</div> <div> National Fire Protection Association Batterymarch Park Quincy, MA 02169-7471 </div> </div>		
NFPA 70—14	National Electrical Code	404.10.3, A107.5

REFERENCED STANDARDS

UL

UL LLC
 333 Pfingsten Road
 Northbrook, IL 60062-2096

Standard reference number	Title	Referenced in code section number
263—2011	Standard for Fire Test of Building Construction and Materials	501.3
723—2008	Standard for Test for Surface Burning Characteristics of Building Materials—with Revisions through September 2010	202, 503.2
790—2004	Standard Test Methods for Fire Tests of Roof Coverings— with revisions through October 2008	504.2, 505.2, 506.2

APPENDIX A

GENERAL REQUIREMENTS

The provisions contained in this appendix are not mandatory unless specifically referenced in the adopting ordinance.

SECTION A101 GENERAL

A101.1 Scope. The provisions of this appendix establish general requirements applicable to new and existing properties located within *wildland-urban interface areas*.

A101.2 Objective. The objective of this appendix is to provide necessary fire protection measures to reduce the threat of wildfire in a *wildland-urban interface area* and improve the capability of controlling such fires.

SECTION A102 VEGETATION CONTROL

A102.1 General. Vegetation control shall comply with Sections A102.2 through A102.4.

A102.2 Clearance of brush or vegetative growth from roadways. The code official is authorized to require areas within 10 feet (3048 mm) on each side of portions of fire apparatus access roads and driveways to be cleared of non-fire-resistive vegetation growth.

Exception: Single specimens of trees, ornamental vegetative fuels or cultivated ground cover, such as green grass, ivy, succulents or similar plants used as ground cover, provided they do not form a means of readily transmitting fire.

A102.3 Clearance of brush and vegetative growth from electrical transmission and distribution lines. Clearance of brush and vegetative growth from electrical transmission and distribution lines shall be in accordance with Sections A102.3.1 through A102.3.2.3.

Exception: Sections A102.3.1 through A102.3.2.3 do not authorize persons not having legal right of entry to enter on or damage the property of others without consent of the owner.

A102.3.1 Support clearance. Persons owning, controlling, operating or maintaining electrical transmission or distribution lines shall have an *approved* program in place that identifies poles or towers with equipment and hardware types that have a history of becoming an ignition source, and provides a combustible free space consisting of a clearing of not less than 10 feet (3048 mm) in each direction from the outer circumference of such pole or tower during such periods of time as designated by the code official.

Exception: Lines used exclusively as telephone, telegraph, messenger call, alarm transmission or other lines classed as communication circuits by a public utility.

A102.3.2 Electrical distribution and transmission line clearances. Clearances between vegetation and electrical

lines shall be in accordance with Sections A102.3.2.1 through A102.3.2.3.

A102.3.2.1 Trimming clearance. At the time of trimming, clearances not less than those established by Table A102.3.2.1 shall be provided. The radial clearances shown are minimum clearances that shall be established, at time of trimming, between the vegetation and the energized conductors and associated live parts.

Exception: The code official is authorized to establish minimum clearances different than those specified by Table A102.3.2.1 when evidence substantiating such other clearances is submitted to and *approved* by the code official.

**TABLE A102.3.2.1
MINIMUM CLEARANCES BETWEEN VEGETATION AND
ELECTRICAL LINES AT TIME OF TRIMMING**

LINE VOLTAGE	MINIMUM RADIAL CLEARANCE FROM CONDUCTOR (feet)
2,400 - 72,000	4
72,001 - 110,000	6
110,001 - 300,000	10
300,001 or more	15

For SI: 1 foot = 304.8 mm.

A102.3.2.2 Minimum clearance to be maintained. Clearances not less than those established by Table A102.3.2.2 shall be maintained during such periods of time as designated by the code official. The site-specific clearance achieved, at time of pruning, shall vary based on species growth rates, the utility company-specific trim cycle, the potential line sway due to wind, line sag due to electrical loading and ambient temperature and the tree's location in proximity to the high voltage lines.

Exception: The code official is authorized to establish minimum clearances different than those specified by Table A102.3.2.2 when evidence substantiating such other clearances is submitted to and *approved* by the code official.

**TABLE A102.3.2.2
MINIMUM CLEARANCES BETWEEN VEGETATION AND
ELECTRICAL LINES TO BE MAINTAINED**

LINE VOLTAGE	MINIMUM CLEARANCE (inches)
750 - 35,000	6
35,001 - 60,000	12
60,001 - 115,000	19
115,001 - 230,000	30.5
230,001 - 500,000	115

For SI: 1 inch = 25.4 mm.

APPENDIX A

A102.3.2.3 Electrical power line emergencies. During emergencies, the utility shall perform the required work to the extent necessary to clear the hazard. An emergency can include situations such as trees falling into power lines, or trees in violation of Table A102.3.2.2.

A102.4 Correction of condition. The code official is authorized to give notice to the owner of the property on which conditions regulated by Section A102 exist to correct such conditions. If the owner fails to correct such conditions, the legislative body of the jurisdiction is authorized to cause the same to be done and make the expense of such correction a lien on the property where such condition exists.

SECTION A103 ACCESS RESTRICTIONS

A103.1 Restricted entry to public lands. The code official is authorized to determine and publicly announce when wildland-urban interface areas shall be closed to entry and when such areas shall again be opened to entry. Entry on and occupation of *wildland-urban interface areas*, except public roadways, inhabited areas or established trails and campsites that have not been closed during such time when the *wildland-urban interface area* is closed to entry, is prohibited.

Exceptions:

1. Residents and owners of private property within *wildland-urban interface areas* and their invitees and guests going to or being on their lands.
2. Entry, in the course of duty, by peace or police officers, and other duly authorized public officers, members of a fire department and members of the Wildland Firefighting Service.

A103.2 Trespassing on posted private property. Where the code official determines that a specific area within a *wildland-urban interface area* presents an exceptional and continuing fire danger because of the density of natural growth, difficulty of terrain, proximity to structures or accessibility to the public, such areas shall be restricted or closed until changed conditions warrant termination of such restriction or closure. Such areas shall be posted in accordance with Section A103.2.1.

A103.2.1 Signs. *Approved* signs prohibiting entry by unauthorized persons and referring to this code shall be placed on every closed area.

A103.2.2 Trespassing. Entering and remaining within areas closed and posted is prohibited.

Exception: Owners and occupiers of private or public property within closed and posted areas; their guests or invitees; authorized persons engaged in the operation and maintenance of necessary utilities such as electrical power, gas, telephone, water and sewer; and local, state and federal public officers and their authorized agents acting in the course of duty.

A103.3 Use of fire roads and defensible space. Motorcycles, motor scooters and motor vehicles shall not be driven or parked on, and trespassing is prohibited on, fire roads or

defensible space beyond the point where travel is restricted by a cable, gate or sign, without the permission of the property owners. Vehicles shall not be parked in a manner that obstructs the entrance to a fire road or *defensible space*.

Exception: Public officers acting within their scope of duty.

A103.3.1 Obstructions. Radio and television aerials, guy wires thereto, and other obstructions shall not be installed or maintained on fire roads or *defensible spaces*, unless located 16 feet (4877 mm) or more above such fire road or *defensible space*.

A103.4 Use of motorcycles, motor scooters, ultralight aircraft and motor vehicles. Motorcycles, motor scooters, ultralight aircraft and motor vehicles shall not be operated within *wildland-urban interface areas*, without a permit by the code official, except on clearly established public or private roads. Permission from the property owner shall be presented when requesting a permit.

A103.5 Tampering with locks, barricades, signs and address markers. Locks, barricades, seals, cables, signs and address markers installed within *wildland-urban interface areas*, by or under the control of the code official, shall not be tampered with, mutilated, destroyed or removed.

A103.5.1 Gates, doors, barriers and locks. Gates, doors, barriers and locks installed by or under the control of the code official shall not be unlocked.

SECTION A104 IGNITION SOURCE CONTROL

A104.1 General. Ignition sources shall be controlled in accordance with Sections A104.2 through A104.10.

A104.2 Objective. Regulations in this section are intended to provide the minimum requirements to prevent the occurrence of wildfires.

A104.3 Clearance from ignition sources. Clearance between ignition sources and grass, brush or other combustible materials shall be maintained at not less than 30 feet (9144 mm).

A104.4 Smoking. Where required by the code official, signs shall be posted stating NO SMOKING. Persons shall not smoke within 15 feet (4572 mm) of combustible materials or nonfire-resistive vegetation.

Exception: Places of habitation or in the boundaries of established smoking areas or campsites as designated by the code official.

A104.5 Equipment and devices generating heat, sparks or open flames. Equipment and devices generating heat, sparks or open flames capable of igniting nearby combustibles shall not be used in *wildland-urban interface areas* without a permit from the code official.

Exception: Use of *approved* equipment within inhabited premises or designated campsites that are not less than 30 feet (9144 mm) from grass-, grain-, brush- or forest-covered areas.

A104.6 Fireworks. Fireworks shall not be used or possessed in *wildland-urban interface areas*.

Exception: Fireworks allowed by the code official under permit in accordance with the *International Fire Code* where not prohibited by applicable local or state laws, ordinances and regulations.

A104.6.1 Authority to seize. The code official is authorized to seize, take, remove or cause to be removed fireworks in violation of this section.

A104.7 Outdoor fires. Outdoor fires in wildland-urban interface areas shall comply with Sections A104.7.1 through A104.7.3.

A104.7.1 General. Persons shall not build, ignite or maintain any outdoor fire of any kind for any purpose in or on any *wildland-urban interface area*, except by the authority of a written permit from the code official.

Exception: Outdoor fires within inhabited premises or designated campsites where such fires are in a permanent barbecue, portable barbecue, outdoor fireplace, incinerator or grill and are not less than 30 feet (9144 mm) from any combustible material or nonfire-resistive vegetation.

A104.7.2 Permits. Permits shall incorporate such terms and conditions that will reasonably safeguard public safety and property. Outdoor fires shall not be built, ignited or maintained in or on hazardous fire areas under the following conditions:

1. When high winds are blowing;
2. When a person 17 years old or over is not present at all times to watch and tend such fire; or
3. When a public announcement is made that open burning is prohibited.

A104.7.3 Restrictions. Persons shall not use a permanent barbecue, portable barbecue, outdoor fireplace or grill for the disposal of rubbish, trash or combustible waste material.

A104.8 Incinerators, outdoor fireplaces, permanent barbecues and grills. Incinerators, outdoor fireplaces, permanent barbecues and grills shall not be built, installed or maintained in *wildland-urban interface areas* without approval of the code official.

A104.8.1 Maintenance. Incinerators, outdoor fireplaces, permanent barbecues and grills shall be maintained in good repair and in a safe condition at all times. Openings in such appliances shall be provided with an *approved* spark arrestor, screen or door.

Exception: Where *approved* by the code official, unprotected openings in barbecues and grills necessary for proper functioning.

A104.9 Reckless behavior. The code official is authorized to stop any actions of a person or persons if the official determines that the action is reckless and could result in an ignition of fire or spread of fire.

A104.10 Planting vegetation under or adjacent to energized electrical lines. Vegetation that, at maturity, would

grow to within 10 feet (3048 mm) of the energized conductors shall not be planted under or adjacent to energized power lines.

SECTION A105 CONTROL OF STORAGE

A105.1 General. In addition to the requirements of the *International Fire Code*, storage and use of the materials shall be in accordance with Sections A105.2 through A105.4.2.

A105.2 Hazardous materials. Hazardous materials in excess of 10 gallons (37.8 L) of liquid, 200 cubic feet (5.66 m³) of gas, or 10 pounds (4.54 kg) of solids require a permit and shall comply with nationally recognized standards for storage and use.

A105.3 Explosives. Explosives shall not be possessed, kept, stored, sold, offered for sale, given away, used, discharged, transported or disposed of within *wildland-urban interface areas*, except by permit from the code official.

A105.4 Combustible materials. Outside storage of combustible materials such as, but not limited to, wood, rubber tires, building materials or paper products shall comply with the other applicable sections of this code and this section.

A105.4.1 Individual piles. Individual piles shall not exceed 5,000 square feet (465 m²) of contiguous area. Piles shall not exceed 50,000 cubic feet (1416 m³) in volume or 10 feet (3048 mm) in height.

A105.4.2 Separation. A clear space of not less than 40 feet (12 192 mm) shall be provided between piles. The clear space shall not contain combustible material or nonfire-resistive vegetation.

SECTION A106 DUMPING

A106.1 Waste material. Waste material shall not be placed, deposited or dumped in wildland-urban interface areas, or in, on or along trails, roadways or highways or against structures in *wildland-urban interface areas*.

Exception: *Approved* public and *approved* private dumping areas.

A106.2 Ashes and coals. Ashes and coals shall not be placed, deposited or dumped in or on wildland-urban interface areas.

Exceptions:

1. In the hearth of an established fire pit, camp stove or fireplace.
2. In a noncombustible container with a tightfitting lid, which is kept or maintained in a safe location not less than 10 feet (3048 mm) from nonfire-resistive vegetation or structures.
3. Where such ashes or coals are buried and covered with 1 foot (305 mm) of mineral earth not less than 25 feet (7620 mm) from nonfire-resistive vegetation or structures.

APPENDIX A

SECTION A107 PROTECTION OF PUMPS AND WATER STORAGE FACILITIES

A107.1 General. The reliability of the water supply shall be in accordance with Sections A107.2 through A107.5.

A107.2 Objective. The intent of this section is to increase the reliability of water storage and pumping facilities and to protect such systems against loss from intrusion by fire.

A107.3 Fuel modification area. Water storage and pumping facilities shall be provided with a *defensible space* of not less than 30 feet (9144 mm) clear of nonfire-resistive vegetation or growth around and adjacent to such facilities.

Persons owning, controlling, operating or maintaining water storage and pumping systems requiring this *defensible space* are responsible for clearing and removing nonfire-resistive vegetation and maintaining the *defensible space* on the property owned, leased or controlled by said person.

A107.4 Trees. Portions of trees that extend to within 30 feet (9144 mm) of combustible portions of water storage and pumping facilities shall be removed.

A107.5 Protection of electrical power supplies. Where electrical pumps are used to provide the required water supply, such pumps shall be connected to a standby power source to automatically maintain electrical power in the event of power loss. The standby power source shall be capable of providing power for not less than 2 hours in accordance with Chapter 27 of the *International Building Code*, Section 604 of the *International Fire Code* and NFPA 70.

Exception: A standby power source is not required where the primary power service to pumps is underground as *approved* by the code official.

SECTION A108 LAND USE LIMITATIONS

A108.1 General. Temporary fairs, carnivals, public exhibitions and similar uses must comply with all other provisions of this code in addition to enhanced ingress and egress requirements.

A108.2 Objective. The increased public use of land or structures in wildland-urban interface areas also increases the potential threat to life safety. The provisions of this section are intended to reduce that threat.

A108.3 Permits. Temporary fairs, carnivals, public exhibitions or similar uses shall not be allowed in a designated *wildland-urban interface area*, except by permit from the code official.

Permits shall incorporate such terms and conditions that will reasonably safeguard public safety and property.

A108.4 Access roadways. In addition to the requirements in Section 403, access roadways shall be not less than 24 feet (7315 mm) wide and posted NO PARKING. Two access roadways shall be provided to serve the permitted use area.

Where required by the code official to facilitate emergency operations, *approved* emergency vehicle operating areas shall be provided.

SECTION A109 REFERENCED STANDARDS

IBC—15	International Building Code®	A107.5
IFC—15	International Fire Code®	A104.6, A105.1, A107.5
NFPA 70—14	National Electrical Code	A107.5

APPENDIX B

VEGETATION MANAGEMENT PLAN

The provisions contained in this appendix are not mandatory unless specifically referenced in the adopting ordinance.

SECTION B101 GENERAL

B101.1 Scope. Vegetation management plans shall be submitted to the code official for review and approval as part of the plans required for a permit.

B101.2 Plan content. Vegetation management plans shall describe all actions that will be taken to prevent a fire from being carried toward or away from the building. A vegetation management plan shall include at least the following information:

1. A copy of the site plan.
2. Methods and timetables for controlling, changing or modifying areas on the property. Elements of the plan shall include removal of slash, snags, vegetation that may grow into overhead electrical lines, other ground fuels, ladder fuels and dead trees, and the thinning of live trees.
3. A plan for maintaining the proposed fuel-reduction measures.

B101.3 Fuel modification. To be considered a *fuel modification* for purposes of this code, continuous maintenance of the clearance is required.

APPENDIX C

FIRE HAZARD SEVERITY FORM

The provisions contained in this appendix are not mandatory unless specifically referenced in the adopting ordinance.

Where adopted, this appendix is to be used in place of Table 502.1 to determine the fire hazard severity.

A. Subdivision Design Points

1. Ingress/Egress

Two or more primary roads	1__
One road	3__
One-way road in, one-way road out	5__

2. Width of Primary Road

20 feet (6096 mm) or more	1__
Less than 20 feet (6096 mm)	3__

3. Accessibility

Road grade 5% or less	1__
Road grade more than 5%	3__

4. Secondary Road Terminus

Loop roads, cul-de-sacs with an outside turning radius of 45 feet (13 716 mm) or greater	1__
Cul-de-sac turnaround	
Dead-end roads 200 feet (60 960 mm) or less in length	3__
Dead-end roads greater than 200 feet (60 960 mm) in length	5__

5. Street Signs

Present	1__
Not present	3__

B. Vegetation (IWUIC Definitions)

1. Fuel Types

Light	1__
Medium	5__
Heavy	10__

2. Defensible Space

70% or more of site	1__
30% or more, but less than 70% of site	10__
Less than 30% of site	20__

C. Topography

- | | |
|---------------------------------|------|
| 8% or less | 1__ |
| More than 8%, but less than 20% | 4__ |
| 20% or more, but less than 30% | 7__ |
| 30% or more | 10__ |

D. Roofing Material

- | | |
|--------------------|------|
| Class A Fire Rated | 1__ |
| Class B Fire Rated | 5__ |
| Class C Fire Rated | 10__ |
| Nonrated | 20__ |

E. Fire Protection—Water Source

- | | |
|--|------|
| 500 GPM (1892.5 L/min) hydrant within 1,000 feet (304.8 m) | 1__ |
| Hydrant farther than 1,000 feet (304.8 m) or draft site | 2__ |
| Water source 20 min. or less, round trip | 5__ |
| Water source farther than 20 min., and 45 min. or less, round trip | 7__ |
| Water source farther than 45 min., round trip | 10__ |

F. Existing Building Construction Materials

- | | |
|--|------|
| Noncombustible siding/deck | 1__ |
| Noncombustible siding/combustible deck | 5__ |
| Combustible siding and deck | 10__ |

G. Utilities (gas and/or electric)

- | | |
|-----------------------------------|-----|
| All underground utilities | 1__ |
| One underground, one above ground | 3__ |
| All above ground | 5__ |

Total for Subdivision

- | | |
|-----------------|-------|
| Moderate Hazard | 40–59 |
| High Hazard | 60–74 |
| Extreme Hazard | 75+ |

APPENDIX D

FIRE DANGER RATING SYSTEM

This appendix is an excerpt from the National Fire Danger Rating (NFDR) System, 1978, United States Department of Agriculture Forest Service, general technical report INT-39.

This appendix is for information purposes and is not intended for adoption.

The fuel models that follow are only general descriptions because they represent all wildfire fuels from Florida to Alaska and from the East Coast to California.

FUEL MODEL KEY

- I. Mosses, lichens and low shrubs predominate ground fuels.
 - A. An overstory of conifers occupies more than one-third of the site: MODEL Q
 - B. There is no overstory, or it occupies less than one-third of the site (tundra): MODEL S
- II. Marsh grasses and/or reeds predominate: MODEL N
- III. Grasses and/or forbs predominate.
 - A. There is an open overstory of conifer and/or hardwood trees: MODEL C
 - B. There is no overstory.
 - 1. Woody shrubs occupy more than one-third, but less than two-thirds of the site: MODEL T
 - 2. Woody shrubs occupy less than one-third of the site.
 - a. The grasses and forbs are primarily annuals: MODEL A
 - b. The grasses and forbs are primarily perennials: MODEL L
- IV. Brush, shrubs, tree reproduction or dwarf tree species predominate.
 - A. Average height of woody plants is 6 feet or greater.
 - 1. Woody plants occupy two-thirds or more of the site.
 - a. One-fourth or more of the woody foliage is dead.
 - (1) Mixed California chaparral: MODEL B
 - (2) Other types of brush: MODEL F
 - b. Up to one-fourth of the woody foliage is dead: MODEL Q
 - c. Little dead foliage: MODEL O
 - 2. Woody plants occupy less than two-thirds of the site: MODEL F
 - B. Average height of woody plants is less than 6 feet.
 - 1. Woody plants occupy two-thirds or more of the site.
 - a. Western United States: MODEL F
 - b. Eastern United States: MODEL O
 - 2. Woody plants occupy less than two-thirds but more than one-third of the site.
 - a. Western United States: MODEL T
 - b. Eastern United States: MODEL D
 - 3. Woody plants occupy less than one-third of the site.
 - a. The grasses and forbs are primarily annuals: MODEL A
 - b. The grasses and forbs are primarily perennials: MODEL L
- V. Trees predominate.
 - A. Deciduous broadleaf species predominate.
 - 1. The area has been thinned or partially cut, leaving slash as the major fuel component: MODEL K
 - 2. The area has not been thinned or partially cut.
 - a. The overstory is dormant; the leaves have fallen: MODEL E
 - b. The overstory is in full leaf: MODEL R
 - B. Conifer species predominate.
 - 1. Lichens, mosses, and low shrubs dominate as understory fuels: MODEL Q
 - 2. Grasses and forbs are the primary ground fuels: MODEL C
 - 3. Woody shrubs and/or reproduction dominate as understory fuels.
 - a. The understory burns readily.
 - (1) Western United States: MODEL T
 - (2) Eastern United States:
 - (a) The understory is more than 6 feet tall: MODEL O
 - (b) The understory is less than 6 feet tall: MODEL D
 - b. The understory seldom burns: MODEL H
 - 4. Duff and litter, branchwood, and tree boles are the primary ground fuels.
 - a. The overstory is overmature and decadent; there is a heavy accumulation of dead tree debris: MODEL G

APPENDIX D

- b. The overstory is not decadent; there is only a nominal accumulation of debris.
 - (1) The needles are 2 inches (51 mm) or more in length (most pines).
 - (a) Eastern United States: MODEL P
 - (b) Western United States: MODEL U
 - (2) The needles are less than 2 inches (51 mm) long: MODEL H

VI. Slash is the predominant fuel.

- A. The foliage is still attached; there has been little settling.
 - 1. The loading is 25 tons/acre (56.1 tons/ha) or greater: MODEL I
 - 2. The loading is less than 25 tons/acre (56.1 tons/ha) but more than 15 tons/acre (33.7 tons/ha): MODEL J
 - 3. The loading is less than 15 tons/acre (33.7 tons/ha): MODEL K
- B. Settling is evident; the foliage is falling off; grasses, forbs, and shrubs are invading the area.
 - 1. The loading is 25 tons/acre (56.1 tons/ha) or greater: MODEL J
 - 2. The loading is less than 25 tons/acre (56.1 tons/ha): MODEL K

FUEL MODEL A

This fuel model represents western grasslands vegetated by annual grasses and forbs. Brush or trees may be present but are very sparse, occupying less than a third of the area. Examples of types where Fuel Model A should be used are cheatgrass and medusahead. Open pinyon-juniper, sagebrush-grass, and desert shrub associations may appropriately be assigned this fuel model if the woody plants meet the density criteria. The quantity and continuity of the ground fuels vary greatly with rainfall from year to year.

FUEL MODEL B

Mature, dense fields of brush 6 feet (1829 mm) or more in height are represented by this fuel model. One-fourth or more of the aerial fuel in such stands is dead. Foliage burns readily. Model B fuels are potentially very dangerous, fostering intense, fast-spreading fires. This model is for California mixed chaparral generally 30 years or older. The F model is more appropriate for pure chamise stands. The B model may also be used for the New Jersey pine barrens.

FUEL MODEL C

Open pine stands typify Model C fuels. Perennial grasses and forbs are the primary ground fuel but there is enough needle litter and branchwood present to contribute significantly to the fuel loading. Some brush and shrubs may be present but they are of little consequence. Situations covered by Fuel Model C are open, longleaf, slash, ponderosa, Jeffrey, and sugar pine stands. Some pinyon-juniper stands may qualify.

FUEL MODEL D

This fuel model is specifically for the palmetto-gallberry understory-pine overstory association of the southeast coastal plains. It can also be used for the so-called "low pocosins" where Fuel Model O might be too severe. This model should only be used in the Southeast, because of a high moisture of extinction.

FUEL MODEL E

Use this model after leaf fall for hardwood and mixed hardwood-conifer types where the hardwoods dominate. The fuel is primarily hardwood leaf litter. The oak-hickory types are best represented by Fuel Model E, but E is an acceptable choice for northern hardwoods and mixed forests of the Southeast. In high winds, the fire danger may be underrated because rolling and blowing leaves are not accounted for. In the summer after the trees have leafed out, Fuel Model E should be replaced by Fuel Model R.

FUEL MODEL F

Fuel Model F is the only one of the 1972 NFDR System Fuel Models whose application has changed. Model F now represents mature closed chamise stands and oakbrush fields of Arizona, Utah and Colorado. It also applies to young, closed stands and mature, open stands of California mixed chaparral. Open stands of pinyon-juniper are represented; however, fire activity will be overrated at low wind speeds and where there is sparse ground fuels.

FUEL MODEL G

Fuel Model G is used for dense conifer stands where there is a heavy accumulation of litter and downed woody material. Such stands are typically overmature and may also be suffering insect, disease, wind or ice damage-natural events that create a very heavy buildup of dead material on the forest floor. The duff and litter are deep, and much of the woody material is more than 3 inches (76 mm) in diameter. The undergrowth is variable, but shrubs are usually restricted to openings. Types meant to be represented by Fuel Model G are hemlock-Sitka spruce, Coast Douglas-fir, and wind-thrown or bug-killed stands of lodgepole pine and spruce.

FUEL MODEL H

The short-needled conifers (white pines, spruces, larches and firs) are represented by Fuel Model H. In contrast to Model G fuels, Fuel Model H describes a healthy stand with sparse undergrowth and a thin layer of ground fuels. Fires in H fuels are typically slow spreading and are dangerous only in scattered areas where the downed woody material is concentrated.

FUEL MODEL I

Fuel Model I was designed for clearcut conifer slash where the total loading of materials less than 6 inches (152 mm) in diameter exceeds 25 tons/acre (56.1 metric tons/ha). After settling and the fines (needles and twigs) fall from the branches, Fuel Model I will overrate the fire potential. For lighter loadings of clearcut conifer slash, use Fuel Model J, and for light thinnings and partial cuts

where the slash is scattered under a residual overstory, use Fuel Model K.

FUEL MODEL J

This model is complementary to Fuel Model I. It is for clearcuts and heavily thinned conifer stands where the total loading of materials less than 6 inches (152 mm) in diameter is less than 25 tons/acre (56.1 metric tons/ha). Again, as the slash ages, the fire potential will be overrated.

FUEL MODEL K

Slash fuels from light thinning and partial cuts in conifer stands are represented by Fuel Model K. Typically, the slash is scattered about under an open overstory. This model applies to hardwood slash and to southern pine clearcuts where the loading of all fuels is less than 15 tons/acre (33.7 tons/ha).

FUEL MODEL L

This fuel model is meant to represent western grasslands vegetated by perennial grasses. The principal species are coarser and the loadings heavier than those in Model A fuels. Otherwise, the situations are very similar; shrubs and trees occupy less than one-third of the area. The quantity of fuel in these areas is more stable from year to year. In sagebrush areas, Fuel Model T may be more appropriate.

FUEL MODEL N

This fuel model was constructed specifically for the sawgrass prairies of south Florida. It may be useful in other marsh situations where the fuel is coarse and reedlike. This model assumes that one-third of the aerial portion of the plants is dead. Fast-spreading, intense fires can occur even over standing water.

FUEL MODEL O

The O fuel model applies to dense, brushlike fuels of the Southeast. O fuels, except for a deep litter layer, are almost entirely living, in contrast to B fuels. The foliage burns readily, except during the active growing season. The plants are typically over 6 feet (1829 mm) tall and are often found under an open stand of pine. The high pocosins of the Virginia, North and South Carolina coasts are the ideal of Fuel Model O. If the plants do not meet the 6-foot (1829 mm) criterion in those areas, Fuel Model D should be used.

FUEL MODEL P

Closed, thrifty stands of long-needled southern pines are characteristic of P fuels. A 2- to 4-inch (51 to 102 mm) layer of lightly compacted needle litter is the primary fuel. Some small-diameter branchwood is present, but the density of the canopy precludes more than a scattering of shrubs and grass. Fuel Model P has the high moisture of extinction characteristic of the Southeast. The corresponding model for other long-needled pines is U.

FUEL MODEL Q

Upland Alaskan black spruce is represented by Fuel Model Q. The stands are dense but have frequent openings

filled with usually flammable shrub species. The forest floor is a deep layer of moss and lichens, but there is some needle litter and small-diameter branchwood. The branches are persistent on the trees, and ground fires easily reach into the tree crowns. This fuel model may be useful for jack pine stands in the Lake States. Ground fires are typically slow spreading, but a dangerous crowning potential exists.

FUEL MODEL R

This fuel model represents the hardwood areas after the canopies leaf out in the spring. It is provided as the off-season substitute for E. It should be used during the summer in all hardwood and mixed conifer-hardwood stands where more than half of the overstory is deciduous.

FUEL MODEL S

Alaskan or alpine tundra on relatively well-drained sites is the S fuel. Grass and low shrubs are often present, but the principal fuel is a deep layer of lichens and moss. Fires in these fuels are not fast spreading or intense, but are difficult to extinguish.

FUEL MODEL T

The bothersome sagebrush-grass types of the Great Basin and the Intermountain West are characteristic of T fuels. The shrubs burn easily and are not dense enough to shade out grass and other herbaceous plants. The shrubs must occupy at least one-third of the site or the A or L fuel models should be used. Fuel Model T might be used for immature scrub oak and desert shrub associations in the West, and the scrub oak-wire grass type in the Southeast.

FUEL MODEL U

Closed stands of western long-needled pines are covered by this model. The ground fuels are primarily litter and small branchwood. Grass and shrubs are precluded by the dense canopy but occur in the occasional natural opening. Fuel Model U should be used for ponderosa, Jeffrey, sugar pine, and red pine stands of the Lake States. Fuel Model P is the corresponding model for southern pine plantations.

APPENDIX E

FINDINGS OF FACT

This appendix is for information purposes and is not intended for adoption.

Originally, most fire and building codes were written and adopted at the local government level. As a result, there were many differences in code provisions from community to community. Local problems often resulted in unique code provisions that were appropriate to the local situation, but not of much use in other communities.

With the development of uniform and model codes and their subsequent adoption by state governments, the common features were applied everywhere. Once the basic provisions were codified into a format and structure that had appeal to both code officials and the builder-development community, their code became “minimum standards.” The model codes were just that—a document that set the minimum criteria that most communities could find acceptable, but not intended to solve every problem everywhere. The developers of model codes left one option to be used: those exceptional situations that require local modifications based on a specific problem could use a specific process to increase the level of a particular requirement.

The solution that was commonly made available in the model adoption process was the development of written “findings of fact” that justified modifications by local code officials. Many state codes identify a specific adoption process. This provision requires that a certain amount of research and analysis be conducted to support a written finding that is both credible and professional. In the context of adopting a supplemental document such as the wildland-urban interface provision, the writing of these findings is essential in creating the maps and overlap needed to use their specific options.

The purpose of this appendix is to provide an overview of how local code officials could approach this process. There are three essential phenomena cited in some model adoption statutes that vary from community to community: climate, topography and geography. Although it can be agreed that there are other findings that could draw distinction in local effects, these three features are also consistent with standard code text that offers opportunity to be more restrictive than local codes.

One point that needs to be reinforced is that the process demands a high level of professionalism to protect the code official’s credibility in adopting more restrictive requirements. A superficial effort in preparing the findings of fact could jeopardize the proposed or adopted code restriction. A code official should devote a sufficient amount of time to draft the findings of fact to ensure that the facts are accurate, comprehensive and verifiable.

DEFINITIONS

CLIMATE. The average course or condition of the weather at a particular place over a period of many years, as exhibited in absolute extremes, means and frequencies of given depar-

tures from these means (i.e., of temperature, wind velocity, precipitation and other weather elements).

GEOGRAPHY. “A science that deals with the earth and its life, especially the description of land, sea, air, and the distribution of plant and animal life including man and his industries with reference to the mutual relations of these diverse elements.” *Webster’s Third New International Dictionary of the English Language, Unabridged.*

INSURANCE SERVICES OFFICE (ISO). An agency that recommends fire insurance rates based on a grading schedule that incorporates evaluation of fire fighting resources and capabilities.

TOPOGRAPHY. The configuration of landmass surface, including its relief (elevation) and the position of its natural and man-made features that affect the ability to cross or transit a terrain.

CLIMATIC CONSIDERATIONS

There are two types of climates: macro and micro. A macro climate affects an entire region and gives the area a general environmental context. A micro climate is a specific variation that could be related to the other two factors, topography and geography. A micro climate may cover a relatively small area or be able to encompass an entire community, as opposed to another community in the same county.

Climatic consideration should be given to the extremes, means and anomalies of the following weather elements:

1. Temperatures.
2. Relative humidities.
3. Precipitation and flooding conditions.
4. Wind speed and duration of periods of high velocity.
5. Wind direction.
6. Fog and other atmospheric conditions.

What is essential in creating an wildland-urban overlay are the data that suggest the existence of critical *fire weather* in the jurisdiction.

TOPOGRAPHIC CONSIDERATIONS

Topographic considerations should be given to the presence of the following topographical elements:

1. Elevation and ranges of elevation.
2. Location of ridges, drainages and escarpments.
3. Percent of grade (slope).
4. Location of roads, bridges and railroads.
5. Other topographical features, such as aspect exposure.

This information becomes an important part of creating an analysis of *wildland-urban areas* because topography and slope are key elements (along with fuel type) that create the

APPENDIX E

need for specific ignition-resistance requirements in this code.

GEOGRAPHIC CONSIDERATIONS

Geography should be evaluated to determine the relationship between man-made improvements (creating an exposure) and factors such as the following:

1. Fuel types, concentration in a mosaic and distribution of fuel types.
2. Earthquake fault zones.
3. Hazardous material routes.
4. Artificial boundaries created by jurisdictional boundaries.
5. Vulnerability of infrastructure to damage by climate and topographical concerns.

Fuel types are the final component of the findings that suggest the need for identifying *wildland-urban areas* in a jurisdiction. Review Appendix D for a brief description of the various fuel models that relate to the specific areas under evaluation.

REPORTING THE FINDINGS

After a person has researched a specific jurisdictional area, the facts should be incorporated into a written document that reflects how these facts relate to the code official's specific needs. The following is an exhibit that incorporates one such report. It should be reviewed as an example of how a relationship can be drawn between specific facts, fire protection problems and specific code modifications. It should be noted that this is an example only.

EXHIBIT 1 — Findings

The [INSERT TITLE: **ADMINISTRATOR**] does herewith make findings that certain climatic, topographic or geological features exist in the [INSERT NAME: **JURISDICTION**], and that those features can, under certain circumstances, affect emergency services. Further, certain code amendments are made to the [INSERT: **INTERNATIONAL FIRE CODE**] and [INSERT: **INTERNATIONAL BUILDING CODE**] that are aimed at mitigating, to the extent possible, the impact of those features.

Finding 1

That the [INSERT NAME: **JURISDICTION**] is situated on the slopes of and at the base of the [INSERT: **NAME OF MOUNTAINS**]. Mountains, with drainages from the [INSERT: **DIRECTION**] portion of the district, including [INSERT: **IDENTIFY LOCAL CREEKS/STREAMS/RIVERS**], which, when flooded, could result in conditions rendering fire department vehicular traffic access unduly burdensome or impossible.

Further, the flood conditions described above carry the potential for overcoming the ability of the fire department to aid or assist in fire control, evacuations, rescues and the emergency task demands inherent in such situations. The potential for the aforementioned flooding conditions to result in limiting fire department emergency vehicular traffic, with resulting overtaxing fire department personnel, may further cause a substantial or total lack of protection against fire for the buildings and structures located within the jurisdiction.

The aforementioned conditions support the imposition of fire protection requirements greater than those set forth in the [INSERT: **INTERNATIONAL BUILDING CODE OR INTERNATIONAL FIRE CODE**].

Finding 2

That the [INSERT NAME: **JURISDICTION**] is situated near [INSERT: **NUMBER OF FAULTS**] major faults, each capable of generating earthquakes of significant magnitude. These are the [INSERT: **NAME OF FAULTS**]. These faults are subject to becoming active at any time; the [INSERT NAME: **JURISDICTION**] is particularly vulnerable to devastation should such an earthquake occur.

The potential effects of earthquake activity include isolating the [INSERT NAME: **JURISDICTION**] from the surrounding area and restricting or eliminating internal circulation due to the potential for collapsing of highway overpasses and underpasses, along with other bridges in the district, or an earth slide, and the potential for vertical movement rendering surface travel unduly burdensome or impossible.

Additional potential situations inherent in such an occurrence include loss of the [INSERT NAME: **JURISDICTION**] water sources; [INSERT: **IDENTIFICATION OF LOCAL SOURCES**] would be expected to suffer damage, along with the local reservoirs and water mains; broken natural gas mains causing structure and other fires; leakage of hazardous materials; the need for rescues from collapsed structures; and the rendering of first aid and other medical attention to large numbers of people.

The protection of human life and the preservation of property in the event of such an occurrence support the imposition of fire protection requirements greater than those set forth in the [INSERT: **INTERNATIONAL BUILDING CODE OR INTERNATIONAL FIRE CODE**].

Finding 3

That the [INSERT NAME: **JURISDICTION**] includes [INSERT: **IDENTITY OF MAJOR TRANSPORTATION ROUTES**]. [INSERT: **IDENTITY OF ROUTE**] is designated by the [INSERT NAME: **JURISDICTION**] as an approved transportation route for highly toxic and radioactive materials.

The potential for release or threatened release of a hazardous material along one of these routes is highly probable given the volume transported daily. Incidents of this nature will normally require all available emergency response personnel to prevent injury and loss of life and to prevent, as far as practicable, property loss. Emergency personnel responding to such aforementioned incidents may be unduly impeded and delayed in accomplishing an emergency response as a result of this situation, with the potential result of undue and unnecessary risk to the protection of life and public safety and, in particular, endangering residents and occupants in buildings or structures without the protection of automatic sprinklers.

The aforementioned problems support the imposition of fire protection requirements greater than those set forth in the [INSERT: **INTERNATIONAL BUILDING CODE OR INTERNATIONAL FIRE CODE**].

Finding 4

The seasonal climatic conditions during the late summer and fall create numerous serious difficulties regarding the control of and protection against fires in the [INSERT NAME: **JURISDICTION**]. The hot, dry weather typical of this area in summer and fall, coupled with [INSERT: **IDENTITY OF ADDITIONAL CLIMATIC CONDITIONS**] frequently results in wildfires that threaten or could threaten the [INSERT NAME: **JURISDICTION**].

Although some code requirements, such as fire-resistive roof classification, have a direct bearing on building survival in a wildland fire situation, others, such as residential automatic sprinklers, may also have a positive effect. In dry climate on low humidity days, many materials are much more easily ignited. More fires are likely to occur and any fire, once started, can expand extremely rapidly. Residential automatic sprinklers can arrest a fire starting within a structure before the fire is able to spread to adjacent brush and structures.

Seasonal winds also have the potential for interfering with emergency vehicle access, delaying or making impossible fire responses, because of toppling of extensive plantings of [INSERT: **TYPE OF TREES**] trees. The trees are subject to uprooting in strong winds due to relatively small root bases compared to the tree itself.

The aforementioned problems support the imposition of fire-protection requirements greater than those set forth in the [INSERT: **INTERNATIONAL BUILDING CODE OR INTERNATIONAL FIRE CODE**].

Finding 5

The [INSERT NAME: **JURISDICTION**] is a [INSERT: **DESCRIBE TYPE OF REGION**] and experiences water shortages from time to time. Those shortages can have a severely adverse effect on water availability for fire fighting.

Fires starting in sprinklered buildings are typically controlled by one or two sprinkler heads, flowing as little as 13 gallons per minute (0.82 L/s) each.

Hose streams used by engine companies on well-established structure fires operate at about 250 gallons per minute (15.8 L/s) each, and the estimated water need for a typical residential fire is 1,250 to 1,500 gallons per minute (78.9 to 94.6 L/s), according to the Insurance Services Office.

Under circumstances such as earthquakes, when multiple fires start within the community, the limited water demands of residential automatic sprinklers would control and extinguish many fires before they spread from building to building. In such a disaster, water demands needed for conflagration fire fighting probably would not be available.

The aforementioned problems support the imposition of fire protection requirements greater than those set forth in the [INSERT: **INTERNATIONAL BUILDING CODE OR INTERNATIONAL FIRE CODE**].

Finding 6

The topography of the [INSRT NAME: **JURISDICTION**] presents problems in delivery of emergency services, including fire

protection. Hilly terrain has narrow, winding roads with little circulation, preventing rapid access and orderly evacuation. Much of these hills are covered with highly nonfire-resistive natural vegetation. In addition to access and evacuation problems, the terrain makes delivery of water extremely difficult. Some hill areas are served by water pump systems subject to failure in fire, high winds, earthquake and other power failure situations.

The aforementioned problems support the imposition of fire protection requirements greater than those set forth in the [INSERT: **INTERNATIONAL BUILDING CODE OR INTERNATIONAL FIRE CODE**].

SUMMARY

Efforts to produce comprehensive findings of fact cannot be underestimated. It is an essential step for fire protection professionals to take before risking the proposal to modify a model code with a requirement that is unique to that community. Done properly, a findings-of-fact document will not only support the adoption of a local modification, it may make it virtually impossible to ignore the need without creating a community consequence.

APPENDIX F

CHARACTERISTICS OF FIRE-RESISTIVE VEGETATION

This appendix is for information purposes and is not intended for adoption.

All plants will burn under extreme *fire weather* conditions such as drought. However, plants burn at different intensities and rates of consumption. Fire-resistive plants burn at a relatively low intensity, slow rates of spread and with short flame lengths. The following are characteristics of fire-resistive vegetation:

1. Growth with little or no accumulation of dead vegetation (either on the ground or standing upright).
2. Nonresinous plants (willow, poplar or tulip trees).
3. Low volume of total vegetation (for example, a grass area as opposed to a forest or shrub-covered land).
4. Plants with high live fuel moisture (plants that contain a large amount of water in comparison to their dry weight).
5. Drought-tolerant plants (deeply rooted plants with thick, heavy leaves).
6. Stands without ladder fuels (plants without small, fine branches and limbs between the ground and the canopy of overtopping shrubs and trees).
7. Plants requiring little maintenance (slow-growing plants that, when maintained, require little care).
8. Plants with woody stems and branches that require prolonged heating to ignite.

APPENDIX G

SELF-DEFENSE MECHANISM

This appendix is for information purposes and is not intended for adoption.

IDENTIFICATION OF THE PROBLEM

The *International Wildland-Urban Interface Code* establishes a set of minimum standards to reduce the loss of property from wildfire. The purpose of these standards is to prevent wildfire spreading from vegetation to a building. Frequently, proposals are made by property or landowners of buildings located in the wildland-urban interface to consider other options and alternatives instead of meeting these minimum standards. This appendix chapter provides discussion of some elements of the proposed self-defense mechanisms and their role in enhancing the protection of exposed structures.

STRUCTURAL SURVIVABILITY

Various stages of assault occur as a building is exposed to a wildland-urban fire. Ashes are cast in front of a fire out of a smoke or convection column, which can result in secondary ignitions. Heavier embers that have more body weight and may contain more heat to serve as sources of ignition follow. Finally, the actual intrusion of a flame front and the radiant heat flux can expose combustibles outside of a building and the exterior structure of a building to various levels of radiant heat. A study revealed that the actual exposure of a building to the flame front by the perimeter of the fire was usually less than six minutes. However, the exposure to the forms of other materials that can result in proliferation of other ignitions can vary, depending on wind, topography and fuel conditions.

To enhance structural survivability, the self-defense mechanisms must, first, do everything possible to prevent the ignition of materials from objects that are cast in front of the fire and, second, they must withstand the assault of the fire on the structure to prevent flames from penetrating into the building and resulting in an interior fire. There are considerable problems in achieving both of these objectives using some of the proposed alternative forms of protection such as the lack of definitive standards for self-defense mechanisms on the exterior of buildings. Although fire service has done considerable research into the evaluation of technology, such as smoke detectors, fire alarms, and interior sprinkler systems, very limited amount of study has been done on exterior sprinkler systems.

All forms of fire protection are classified as either active or passive. Active fire protection is taking specific action to control the fire in some manner. Passive fire protection uses resistance to ignition or provides some form of warning that allows other action to be taken. These two classifications of self-defense mechanisms create different problems with regard to being accepted as alternatives for building construction. Furthermore, certain self-defense mechanisms must be built in during new construction, and others may only be capable of being added as a retrofit to existing structures. As a matter of public policy, most code officials are reluctant to accept passive fire protection as an equivalent to a construc-

tion requirement, but are also reluctant to accept active fire protection systems that require intervention by suppression personnel.

The unequal distribution of self-defense mechanisms within a specific neighborhood poses another problem. If an individual is granted a waiver or exemption on the basis of putting in a nonmandated self-defense mechanism, and the neighbors to either side choose not to do so, or are not given the same options, there is a potential operational problem.

ALTERNATIVE CONCEPTS

This appendix chapter provides consideration of the following alternatives: (1) exterior sprinkler systems, (2) alternative water supply systems for exposure protection, (3) Class A foam systems, (4) enhanced exterior fire protection, (5) sheltering in place, and (6) building location.

Exterior sprinkler systems. Currently, there is no nationally accepted standard for the design and installation of exterior fire sprinkler systems. Interior sprinkler systems are regulated by nationally recognized standards that have specific requirements. However, exterior sprinkler systems lack such uniformity. What is generally proposed is a type of sprinkler system, placed on the roofs or eaves of a building, whose primary purpose is to wet down the roof. These types of systems can be activated either manually or automatically. However, the contemporary thought on exterior sprinkler systems is that if the roof classification is of sufficient fire resistance, exterior sprinklers are of little or no value.

Another option and alternative with exterior sprinklers is to use them to improve the relative humidity and fuel moisture in the *defensible space*. In this case, the exterior sprinkler is not used to protect the structure as much as it attempts to alter the fuel situation. However, studies do not support the idea that merely spraying water into the air in the immediate vicinity of a rapidly advancing wildland-urban fire does much good. Clearly, irrigation systems that keep plants healthy and fire-resistive plants that resist convection and radiated heat can accomplish the same purpose.

Alternative water supply systems for exposure protection. Pools and spas are often offered as an alternative water source for fire departments. These water sources must be accessible and reliable to be of any use by fire protection forces. Accessibility means that the fire department must be able to withdraw the water without having to go through extraordinary measures such as knocking down fences or having to set up drafting situations. Designs have been created to put liquid- or gas-fueled pumps or gravity valves on pools and spas to allow fire departments to access these water systems. A key vulnerability to the use of these alternative water systems is loss of electrical power. When the reliability of a water system depends on external power sources, it can-

APPENDIX G

not be relied upon by fire fighters to be available in a worst-case scenario.

Class A foam systems. A new and emerging technology is the concept of Class A foam devices. These are devices that allow a homeowner to literally coat the exterior of their house with a thick layer of foam that prevents the penetration of embers and radiant heat to the structure. There is no nationally recognized standard for Class A foam technology; however, experiments in various wildland fire agencies seem to advocate foaming houses in advance of fire and flame fronts. To be accepted by the code official, the Class A foam system should pass rigorous scrutiny with regard to the manner and needs in which it is activated, the ways and means in which it is properly maintained, and a ways and means to test the system for its operational readiness during hiatus between emergencies.

Enhanced exterior fire protection. This alternative method would increase the degree of fire resistance on the exterior of a building. This is most often an alternative recommended as a retroactive application when individual properties cannot achieve adequate *defensible space* on the exterior of a building. Normally, fire resistance and building scenarios are concerned with containing a fire. Fire-resistance ratings within building design infers resistance to a fire for the specified time to compartmentalize the building's interior.

To improve fire resistance on the exterior of the structure, the primary emphasis is on preventing intrusion into the building. This means protection of apertures and openings that may or may not be required to have any degree of fire resistance by accepted building codes. The option that is available here is for individuals to provide coverage in the form of shutters or closures to these areas, which, along with maintenance of perimeter-free combustibles, can often prevent intrusion.

There are obvious limitations to this alternative. First and foremost is the means of adequately evaluating the proposed fire resistance of any given assembly. Testing techniques to determine fire resistance for such objects as drywall and other forms of construction may not be applicable to exterior application. Nonetheless, code officials should determine the utility of a specific fire resistance proposal by extrapolating conservatively.

Shelter in place. Developments in the wildland-urban interface may be designed to allow occupants to "Shelter in Place." Use of this design alternative should include ignition-resistant construction, access, water supply, automatic sprinkler systems, provisions for and maintenance of *defensible space*, and a Fire Protection Plan.

A Fire Protection Plan describes ways to minimize the fire problems created by a specific project or development. The purpose for the Fire Protection Plan is to reduce the burden and impact of the project or development on the community's fire protection delivery system. The plan may utilize components of land use, building construction, vegetation management and other design techniques and technologies. It should include specific mitigation measures consistent with the unique problems resulting from the location, topography, geology, flammable vegetation and climate of the proposed

site. The plan shall be consistent with this code, and *approved* by the fire code official. The cost of preparation and review is to be borne by the project or development proponent.

Building location. The location of a new building within lot lines should be considered as it relates to topography and fire behavior. Buildings located in natural chimneys, such as narrow canyons and saddles, are especially fire prone because winds are funneled into these areas and eddies are created. Buildings located on narrow ridges without setbacks may be subjected to increased flame and convective heat exposure from a fire advancing from below. Stone or masonry walls can act as heat shields and deflect the flames. Swimming pools and rated or *noncombustible* decks and patios can be used to create a setback, decreasing the exposure to the structure. Attic and under floor vents, picture windows and sliding glass doors should not face possible corridors due to the increased risk of flame or ember penetration.

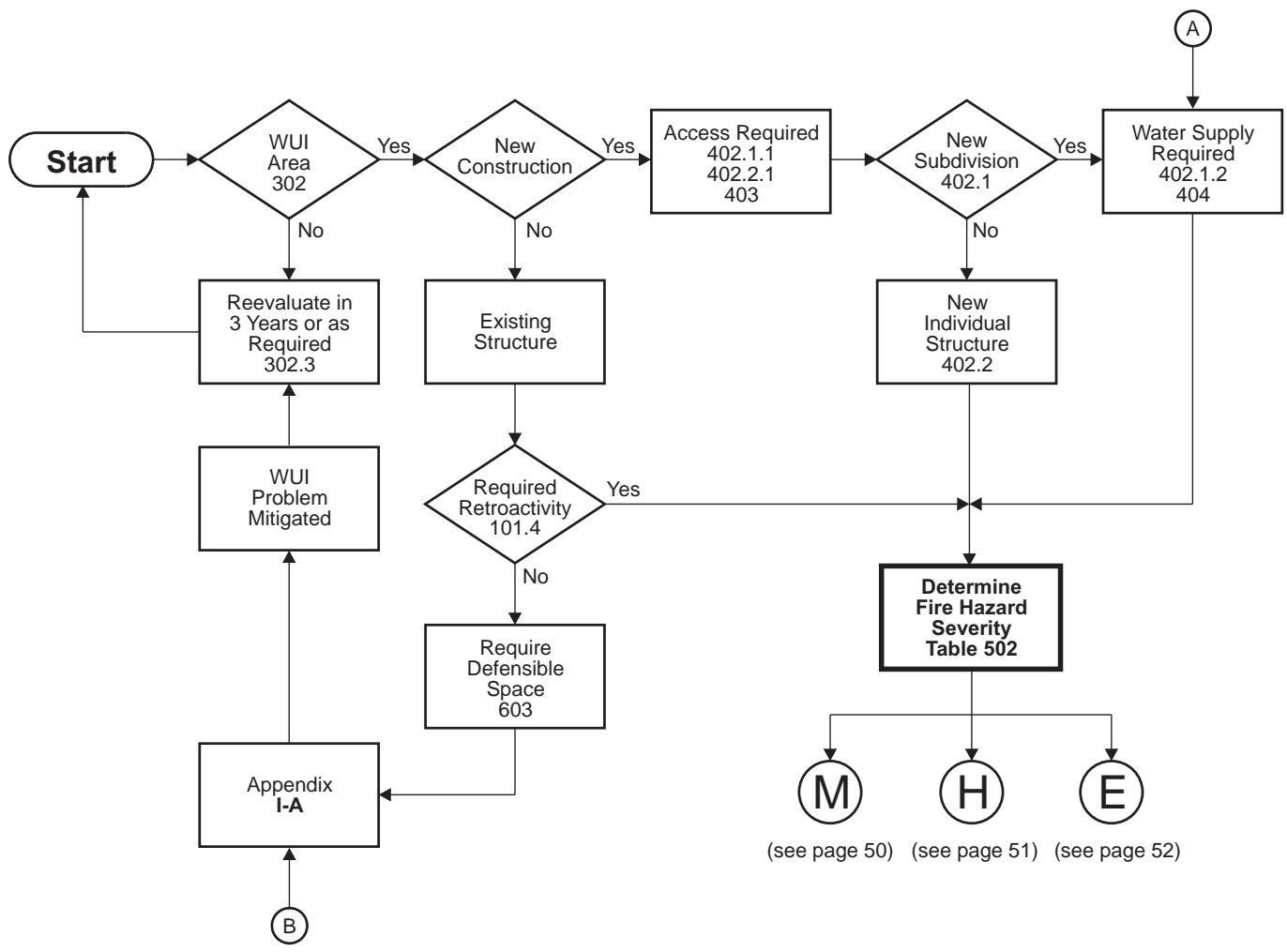
CONCLUSION

The purpose of the *International Wildland-Urban Interface Code* is to establish minimum standards that prevent the loss of structures, even if fire department intervention is absent. To accept alternative self-defense mechanisms, the code official must carefully examine whether these devices will be in place at the time of an event and whether or not they will assist or actually complicate the defense of the structure by fire suppression forces if they are available.

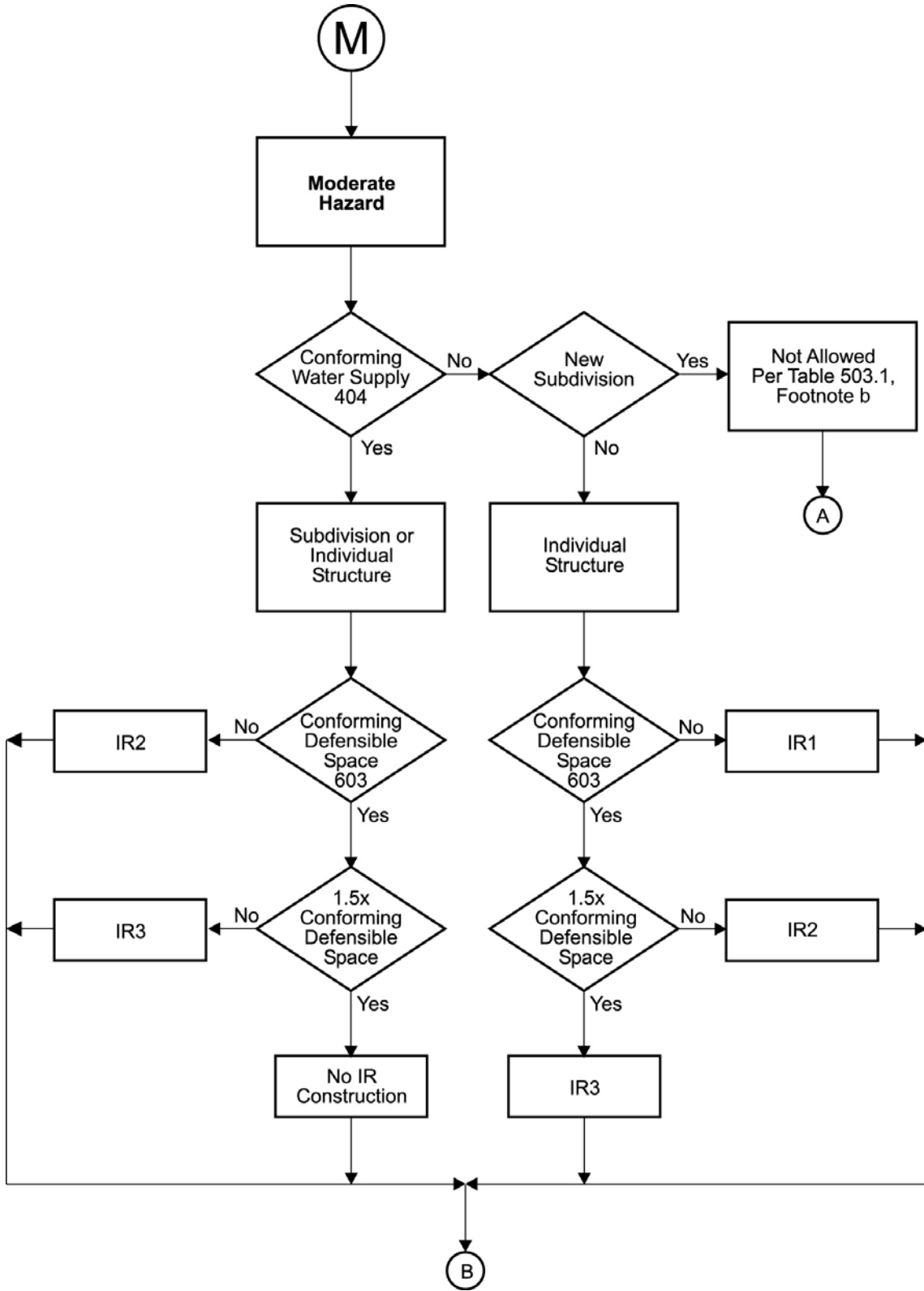
The best alternative to having a building comply with all of the provisions of this code is to remove sources of fuel. This is closely paralleled by excellent housekeeping between the vegetation and the structure. Alternative ways of achieving each of these goals can and should be considered after scrutiny by appropriately credentialed and qualified fire protection personnel.

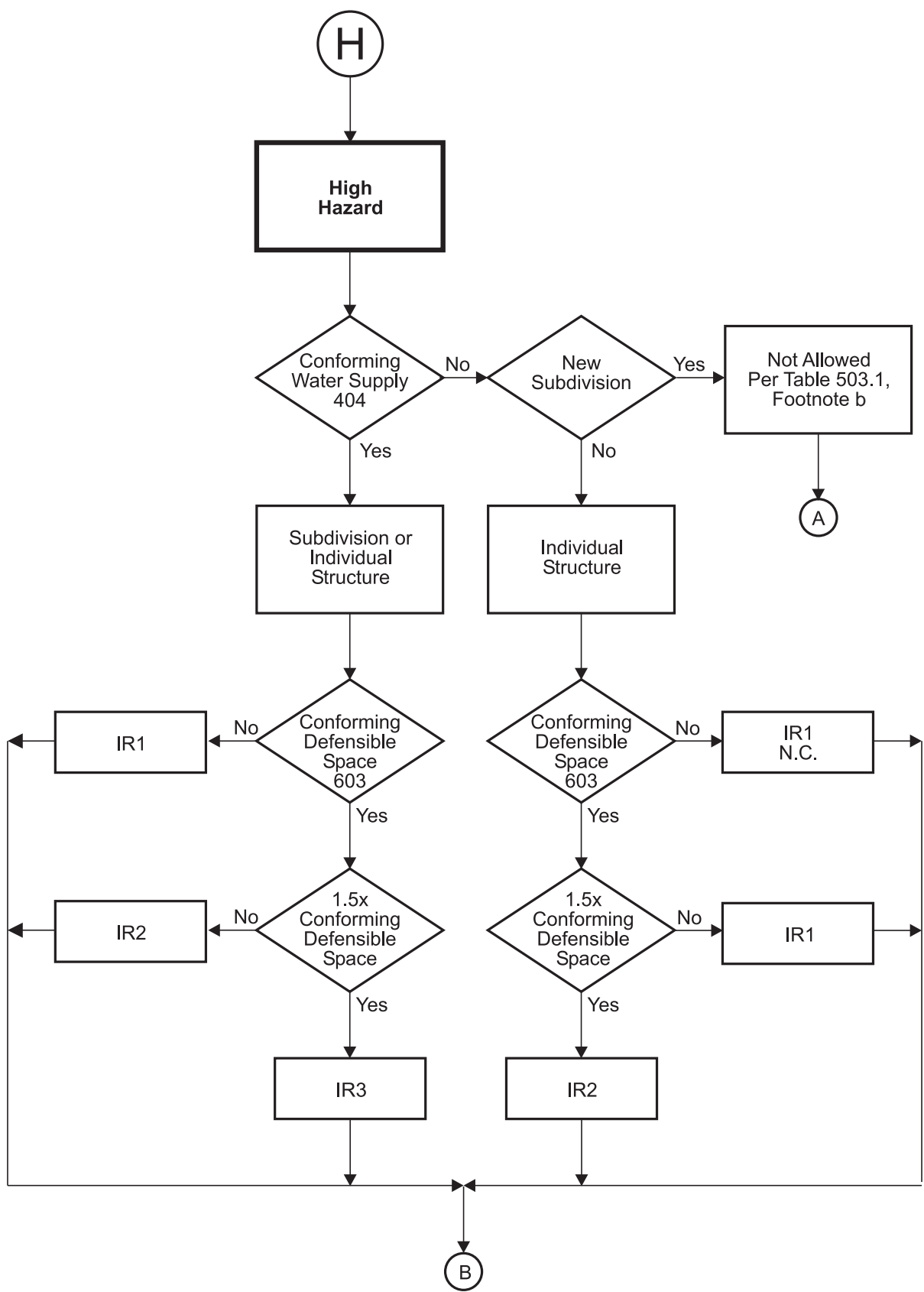
APPENDIX H INTERNATIONAL WILDLAND-URBAN INTERFACE CODE FLOWCHART

This appendix is for information purposes and is not intended for adoption.

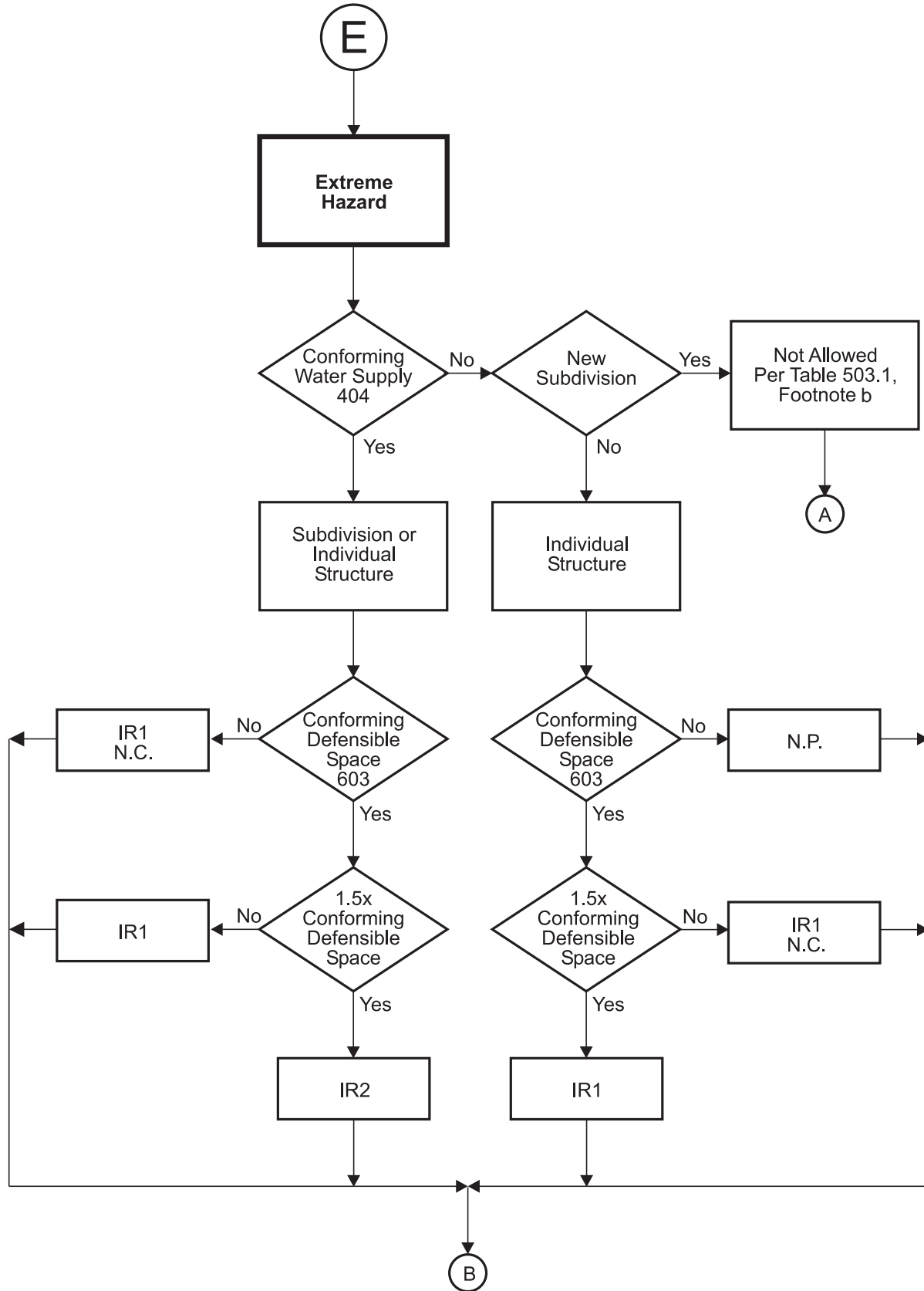


APPENDIX H





APPENDIX H



INDEX

A

ACCESS

- Applicability 402
- Driveways 403.2
- Fire apparatus access roads 403.3
- Grade 403.7
- Individual structures 402.2
- Marking of roads 402.3, 403.4
- Restricted 403.1
- Subdivisions 402.1

ACCESSORY STRUCTURE

- Defined** 202
- Detached** 504.11, 505.11
- Exempt from permit** 107.3

ADDITIONS OR ALTERATIONS 101.5

ADDRESS MARKERS 402.3, 403.6

ALTERNATIVE MATERIALS OR METHODS . . . 105.3

APPEALS 106

APPENDICES 101.2.1

APPLICABILITY 102

AUTHORITY OF CODE OFFICIAL 104

AUTOMATIC SPRINKLER SYSTEMS 602

C

CERTIFICATE OF COMPLETION 110

- Certificate of occupancy 110.2
- Revocation 110.4
- Temporary occupancy 110.3

CLASS 1 IGNITION-RESISTANT

- CONSTRUCTION** 504
- Appendages 504.7
- Detached accessory structures 504.11
- Eaves 504.3
- Exterior doors 504.9
- Exterior walls 504.5
- Gutters and downspouts 504.4
- Protection of eaves 504.3
- Roof covering 504.2
- Underfloor protection 504.6
- Vents 504.10
- Windows 504.8

CLASS 2 IGNITION-RESISTANT

- CONSTRUCTION** 505
- Appendages 505.7
- Detached accessory structures 505.11

- Exterior doors 505.9
- Exterior walls 505.5
- Gutters and downspouts 505.4
- Protection of eaves 505.3
- Roof covering 505.2
- Underfloor protection 505.6
- Vents 505.10
- Windows 505.8

CLASS 3 IGNITION-RESISTANT

- CONSTRUCTION** 506
- Gutters and downspouts 506.4
- Roof covering 506.2
- Unenclosed underfloor protection 506.3

CODE OFFICIAL, AUTHORITY 104

COMPLIANCE ALTERNATIVES 105

CONTROL OF

- STORAGE** Appendix A, Section A105

D

DEFENSIBLE SPACE 603

- Fuel modification 603.2
- Maintenance of 604

DEFINITIONS 202

DESIGNATION OF WILDLAND-URBAN

- INTERFACE AREA** 302.1

DUMPING Appendix A, Section A106

F

FEES 112

FINDINGS OF FACT Appendix E

FIRE DANGER RATING SYSTEM Appendix D

FIRE FLOW CALCULATION AREA

- Defined 202
- Application 404.5

FIRE HAZARD SEVERITY 502

FIRE HAZARD SEVERITY FORM Appendix C

FIRE PROTECTION PLAN 405

FIRE-RESISTANCE-RATED

- CONSTRUCTION** 501.3

FIRE-RESISTIVE VEGETATION Appendix F

FIRE-RETARDANT-TREATED

- LUMBER OR WOOD** 503.2, 504.5, 504.7, 504.11, 505.5, 505.7, 505.11

FUEL MODELS Appendix D

FUEL MODIFICATION DISTANCE 603.2

INDEX

G	
GENERAL REQUIREMENTS	Appendix A
I	
IGNITION-RESISTANT CONSTRUCTION AND MATERIAL	503
IGNITION SOURCE CONTROL	Appendix A, Section A104
INSPECTION AND ENFORCEMENT	109
Abatement	109.4.8
Authority to inspect	109.1.2
Citations	109.4.4
Enforcement	109.2
Placarding	109.4.5.3
Prosecution	109.4.6
Reinspections	109.1.3
Right of entry	109.3
Testing	109.1.4
Unsafe conditions	109.4.5
K	
KEY BOX	403.1
L	
LAND USE LIMITATIONS	Appendix A, Section A108
LEGAL DEFENSE OF THE CODE OFFICIAL	104.3.1
LIABILITY OF THE CODE OFFICIAL	104.3
LP-GAS INSTALLATIONS	606
M	
MAINTENANCE	101.6
MAINTENANCE OF DEFENSIBLE SPACE	604
Modified area	604.2
Responsibility	604.3
Trees	604.4
MAPPING OF WILDLAND-URBAN INTERFACE AREA	302.2
P	
PERMITS	
Application	107.4
Approval	107.5
Expiration	107.8
Issuance	107.6
Preliminary inspection	107.4.1
Refusal to issue	107.6.1
Required	107.2
Retention	107.9
Revocation	107.10
Validity	107.7
Work exempt from permit	107.3
PLACARDING AS UNSAFE	109.4.5.3
PLANS AND SPECIFICATIONS	108
Amended	108.10
Examination of	108.9
Information on plans and specifications	108.2
Phased	108.12
Previous approval	108.11
Retention of	108.8
Site plan	108.3
Vegetation management plans	108.4
POWERS AND DUTIES OF THE CODE OFFICIAL	104.1
PRACTICAL DIFFICULTIES	105.1
PROTECTION OF PUMPS AND WATER STORAGE FACILITIES	Appendix A, Section A107
R	
REFERENCED STANDARDS	102.4, Chapter 7
RETROACTIVITY	101.4
ROOF COVERINGS, REPLACEMENT OR REPAIR OF	507
S	
SCOPE	101
SELF-DEFENSE MECHANISM	Appendix G
SERVICE UTILITIES	113
SPARK ARRESTERS	605
STOP WORK ORDER	114
STORAGE OF FIREWOOD AND COMBUSTIBLE MATERIALS	607
T	
TECHNICAL ASSISTANCE	105.2
TEMPORARY STRUCTURES AND USES	111
TREES	604.4
V	
VEGETATION CONTROL	Appendix A, Section A102
VEGETATION MANAGEMENT PLAN	Appendix B
W	
WATER SUPPLY	
Adequate water supply	404.5
Applicability	402
Draft sites	404.3
Hydrants	404.4

Identification	404.8
Individual structures	402.2.2
Obstructions	404.7
Reliability	404.10
Subdivisions	402.1
Testing and maintenance	404.9
Water sources	404.2
WILDLAND-URBAN INTERFACE	
AREA DESIGNATIONS	302
Declaration	302.1
Mapping	302.2
Review	302.3



People Helping People Build a Safer World®



At ICC Plan Review Services, our code experts love a good challenge

Like reviewing your most complex plan reviews.

Our licensed and ICC-certified code experts specialize in delivering the most accurate code analysis to your most complex and complicated projects. After all, no other plan review firm has as much expertise in **ALL** the International Codes (I-Codes) as the code experts at ICC Plan Review Services.

For I-Codes expertise you can trust, visit the ICC Plan Review web page at www.iccsafe.org/PLRF2 or call David Hunter at 888-422-7233, ext. 5577.



People Helping People Build a Safer World®

The International Code Council's Training and Education Department

Industry professionals look to ICC to provide the critical knowledge and experiences necessary to excel in today's challenging world. ICC's educational programs cover a broad spectrum of code and construction related topics, offering some of the highest quality instruction direct from the source.

INSTITUTES

Acquire Skills, Share Experiences, Earn CEUs

ICC's training institutes offer a comprehensive education experience and a great way to earn much needed CEUs. Learn best practices from the leading experts in the field, build your network of professional contacts and share experiences. Institutes are held across the country throughout the year. To see the full schedule go to www.iccsafe.org/training.

HIRE ICC TO TEACH

Bring ICC On-Site and Earn CEUs

Give your group the confidence they need to meet tough challenges head-on so they can reach their full potential. ICC's course catalog contains a wide variety of educational topics that are available for contract at a location of your choice. Customized training is also available to fit your needs. For our full course catalogue go to www.iccsafe.org/hireicc.

ICC ONLINE CAMPUS

Earn CEUs at Your Own Pace

Online courses offer access to a comprehensive training and education portal, providing you with an effective and convenient tool to enhance your professional skills. Courses are available anytime for 99 days following registration. For a quick and easy way to earn CEUs towards your certification, try our Online Certifications Renewal section. Go to www.iccsafe.org/onlinecampus for our full offerings.

For more information about ICC's Training please contact us at
888-ICC-SAFE (422-7233) ext. 33818 or email us at icctraining@iccsafe.org.



People Helping People Build a Safer World®

GET IMMEDIATE DOWNLOADS OF THE STANDARDS YOU NEED

Browse hundreds of industry standards adopted by reference. Available to you 24/7!

Count on ICC for standards from a variety of publishers, including:

ACI

AISC

ANSI

APA

APSP

ASHRAE

ASTM

AWC

CPSC

CSA

DOC

DOJ

DOL

DOTn

FEMA

GBI

GYPSUM

HUD

ICC

ISO

NSF

SMACNA

USC

**DOWNLOAD YOUR STANDARDS TODAY!
WWW.ICCSAFE.ORG/BOOKS**



14-09376



People Helping People Build a Safer World®

Growing your career is what ICC Membership is all about

As your building career grows, so does the need to expand your code knowledge and job skills. Whether you're seeking a higher level of certification or professional quality training, Membership in ICC offers the best in I-Code resources and training for growing your building career today and for the future.

- **Learn** new job skills to prepare for a higher level of responsibility within your organization
- **Improve** your code knowledge to keep pace with the latest International Codes (I-Codes)
- **Achieve** additional ICC Certifications to open the door to better job opportunities

Plus, an affordable ICC Membership provides exclusive Member-only benefits including:

- Free code opinions from I-Code experts
- Free I-Code book(s) to new Members*
- Access to employment opportunities in the ICC Career Center
- Discounts on professional training & Certification renewal exams
- Savings of up to 25% off on code books & training materials
- Free benefits - Governmental Members: Your staff can receive free ICC benefits too*
- And much more!

Join the International Code Council (ICC) and start growing your building career now! Visit our Member page at www.iccsafe.org/membership for an application.

*Some restrictions apply. Speak with an ICC Member Services Representative for details.

14-09333

