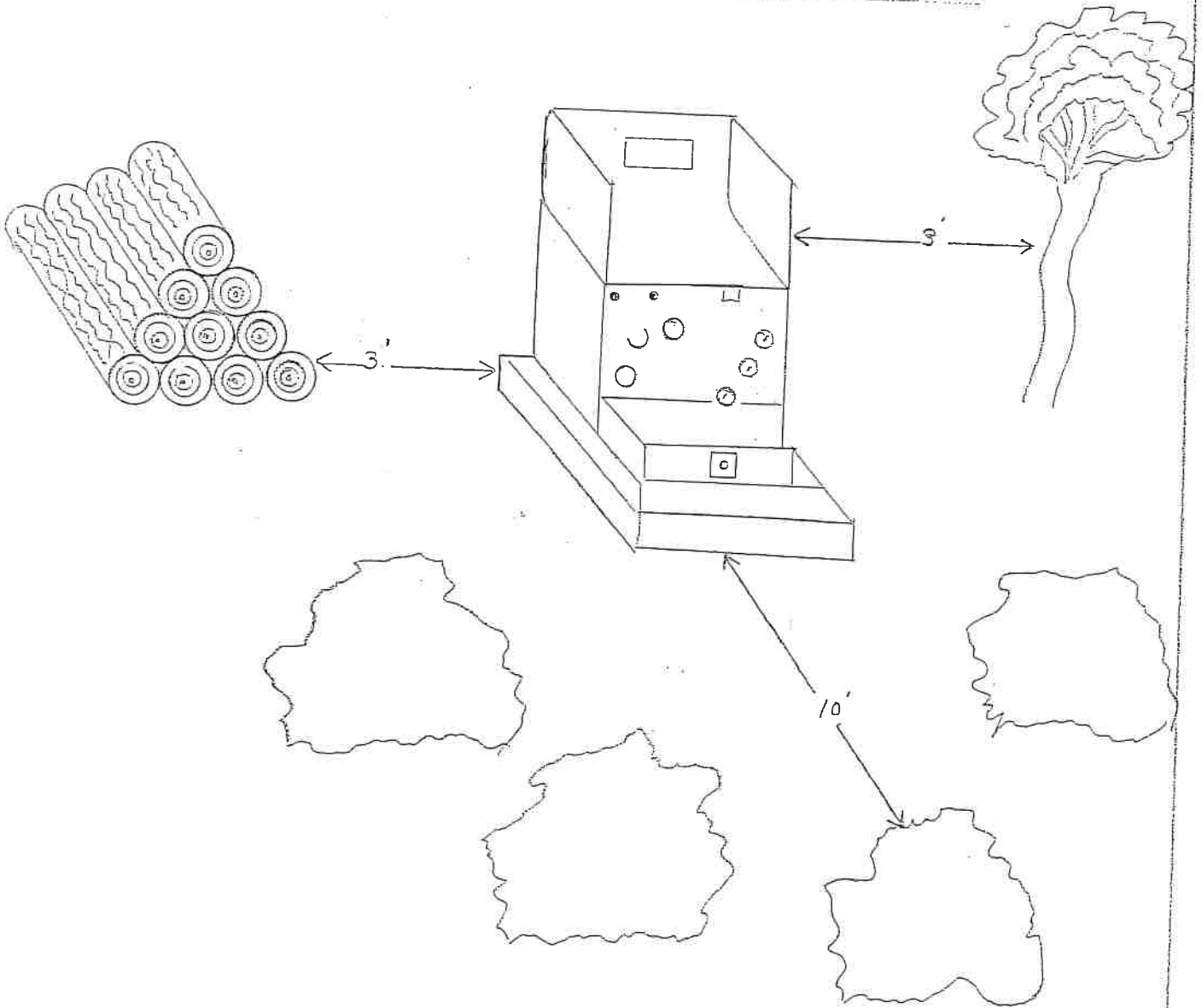
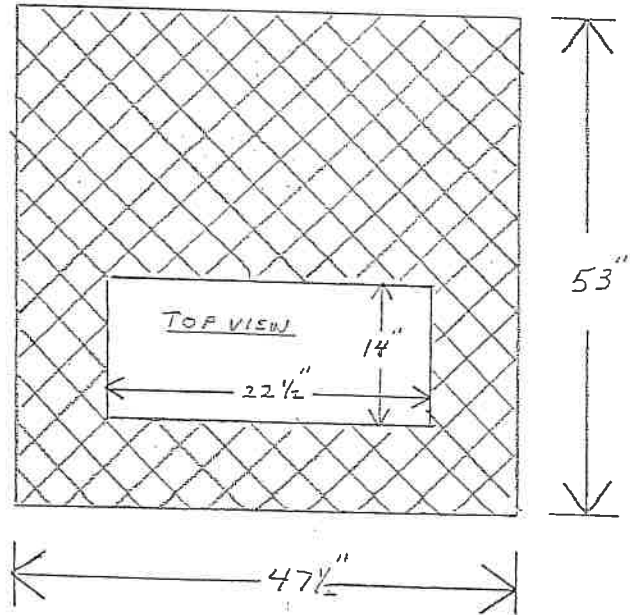
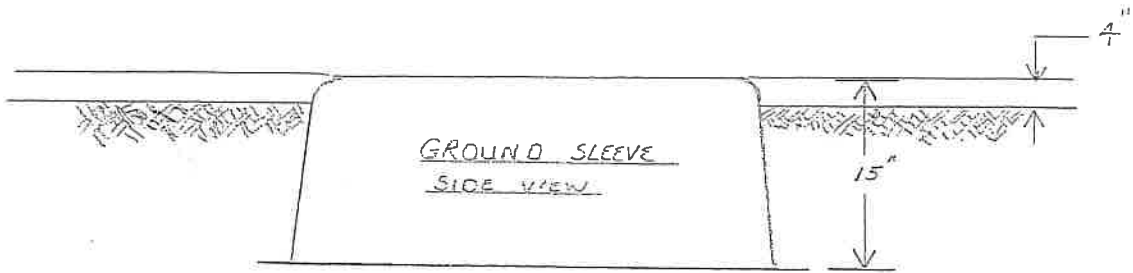


NOTICE

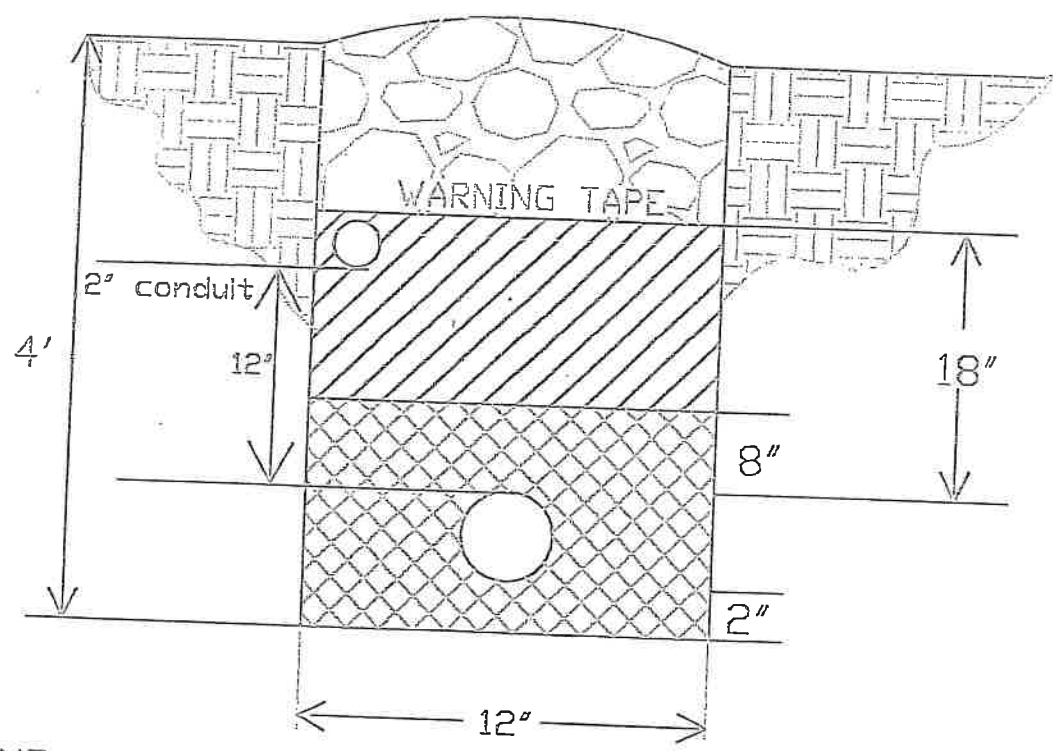


Adequate working space is required. Please keep shrubs, structures, stored, material, fences, etc. at least 10 ft away from this side and 3 ft away from other side.



	SINGLE PHASE PAD ASSEMBLIES	
		UM1-7NC

REVISIONS				
ZONE	REV	DESCRIPTION	DATE	APPROVED



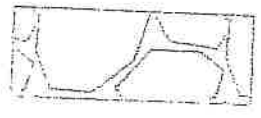
LEGEND



SAND OR CLEAN SOIL



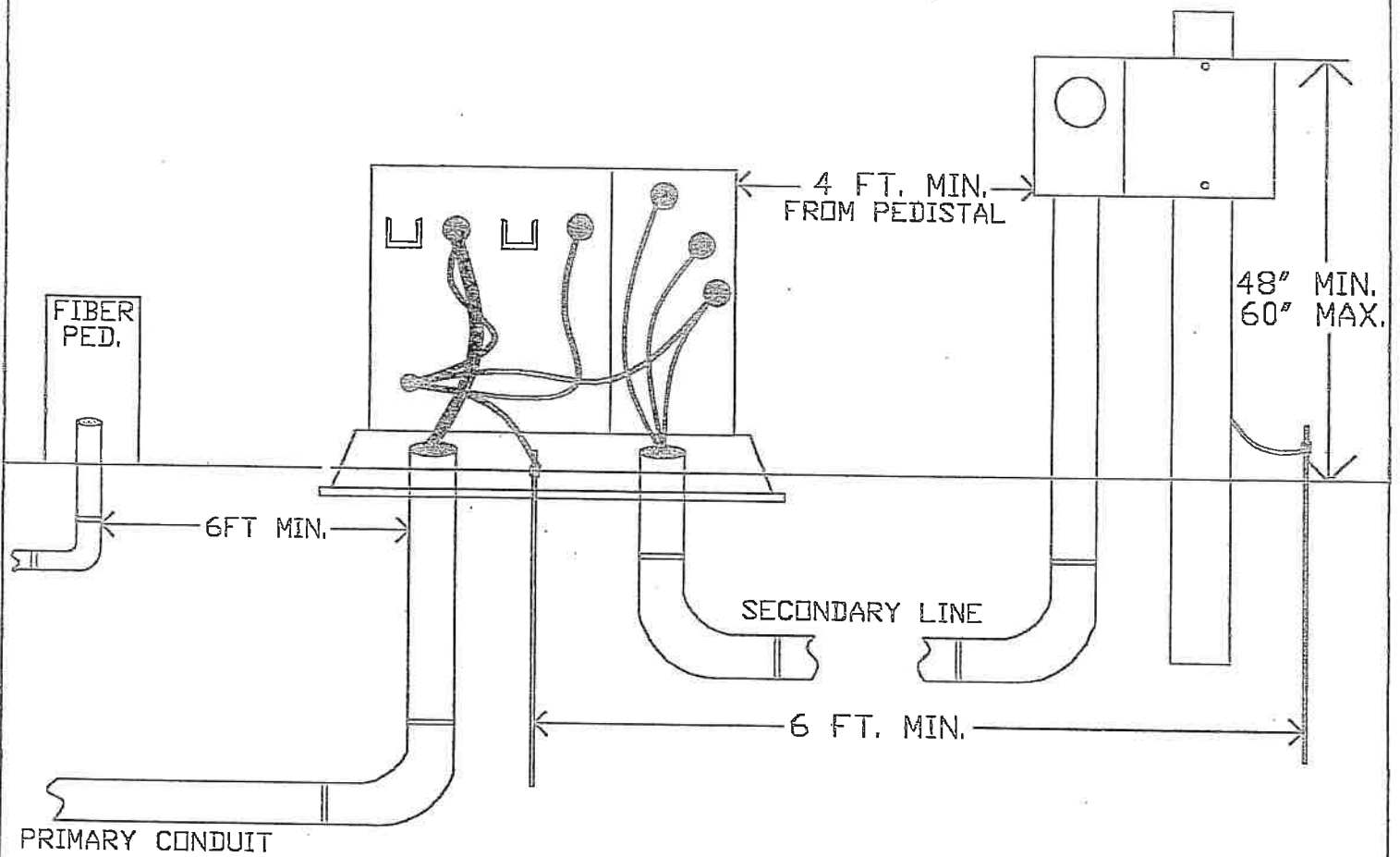
COMPACTED BACKFILL WITH LESS THAN 2" MATERIAL



COMPACTED BACKFILL

NOTE: 1. BACKFILL SHALL BE COMPACTED TO 95% MODIFIED PROCTOR DENSITY

KIT CARSON ELECTRIC CO-OP			
SINGLE PHASE CONDUIT INSTALLATION			
SIZE	FSCM NO.	DWG NO.	REV
SCALE		SHEET	



NOTE:

1. SEPARATION OF GROUND RODS SHOULD BE A MINIMUM OF 6 FT.
2. SEPARATION BETWEEN TRANSFORMER AND METER BASE SHOULD BE 4FT. MIN. AND 6FT. MAX.
3. SEPARATION BETWEEN TRANSFORMER AND FIBER PEDESTAL SHOULD BE 6FT. MIN.
4. METER BASE SHOULD BE ON A 6X6 POST OR UNISTRUT.

Kit Carson Electric
 Cooperative, Inc
 P.O. Box 578
 Taos, New Mexico
 87571

KIT CARSON ELECTRIC
 CO-OP

Draftsman JVT

FIBER & METER INSTALATION
 UNDERGROUND SOURCE