

C-900 - ADDENDUM

Addendum No. 4

Date:	<u>April 1, 2019</u>
Issued To:	<u>Plan Holders</u>
From:	<u>Alan Plummer Associates</u>
Project:	<u>Wastewater Treatment Plant Expansion</u>

This Addendum forms a part of the Contract for the project above. The original Contract Documents and any prior Addenda remain in full force and effect except as modified by the following which shall take precedence over any contrary provisions in the prior documents.

Each Bidder shall acknowledge receipt of this Addendum by affixing his signature below, by noting this Addendum on his Bid Form and attaching this Addendum acknowledgment page to his Bid.

The undersigned acknowledges receipt of this Addendum and the Bid submitted is in accordance with information, instructions and stipulations set forth herein.

BIDDER

Firm's Name

By:

<u>Signature</u>	<u>Date</u>
<u>Print Name</u>	<u>Title</u>

GENERAL DESCRIPTION

- A. This addendum forms a part of the Bidding and Contract Documents and clarifies, corrects or modifies the Project Manual and Drawings as described below.
- B. This addendum consists of 4 page(s) and the following attachments:
 - 1. Temporary Treatment System - MicroBLOX Unit 4-4-300
 - 2. Structural Detail for inclusion on Sheet No. S4-04 – Floor Penetration Curb Detail.

PROJECT QUESTIONS

- A. Will Ovivo supply the Influent pumps (pumping from the existing concrete Anoxic/EQ Tank to the Temporary Treatment System) and the WAS pumps (pumping from the Temporary Treatment System to the sludge holding tanks)?
 - 1. Response: Yes; Ovivo will supply the influent submersible pumps and a WAS pump with the temporary treatment system (see attached). The contractors will need to provide the interconnecting temporary piping and electrical for these pumps.
- B. On plan sheet A10 of the 2019 drawings, Rooms 6-Restroom, 7-Break Room and 8-Laboratory get a floor finish of concrete stain. Do these rooms have an existing coating on them? If so, do you know what the coating is?
 - 1. Response: The existing floors referenced in this question do not have an existing coating.
- C. Spec 15440, 2.8, B: Could a Model # for the Emergency Eyewash/Shower Combination be provided as there are a great many different models and configurations available?
 - 1. Response: Manufacturer: Haws; Model: 8300-8309.
- D. Specification 03360 – Concrete Stain Finishes appears in the spec book, but not in the table of contents. I don't see anywhere in the plans where there is concrete that is to be stained. Please clarify.
 - 1. Response: Per Sheet No. A10, Rooms 6-Restroom, 7-Break Room and 8-Laboratory get a floor finish of concrete stain.
- E. The Sidewalk Detail on Sheet S4-03 shows an angle support anchored to the wall. Please provide the size of the angle, and the size and spacing of the anchors
 - 1. Response: Please refer to the revision to Sheet No. S4-03, below.
- F. No concrete coatings on of the interior basins new or existing (Pre-Anoxic basin 1 & 2, MBR basins 1&2, Aeration Basin 1&2, Post Anoxic Basin 1&2).
 - 1. Response: This does not apply to this project.
- G. No concrete containment coatings on existing treatment building.
 - 1. Response: This does not apply to this project.
- H. Specification Section 09900-5 F-1 Interior concrete coating – non-immersion interior? Where does this happen?
 - 1. Response: Refer to VTSV WTP Room Finish Schedule on Sheet No. A10, for interior concrete floor finish schedule.

- I. Specification Section 09900-5 F-4 Underside of double tees in Digester TANK? Where
 1. Response: Specification Section 09900-5 F-4 has been deleted in this Addendum.
- J. Specification Section 09900-5 F-5 Exterior concrete wall surfaces as indicated? Where
 1. Response: This coating specification applies only to new exposed concrete wall surface.
- K. Specification Section 07190 Water Repellents (concrete unpainted, exposed aggregate, concrete unit masonry (unpainted and unglazed)?
 1. Response: The referenced section applies as per finish schedules on Sheet No. A10.
- L. Sheet A-1 Existing Treatment Building – break room specification does not apply to this project and control room – existing wet well – Do they coat?
 1. Response: Per Sheet No. A10, Rooms 6-Restroom, 7-Break Room and 8-Laboratory get a floor finish of concrete stain. There is no coating required for the existing wet well.
- M. If a coating will be required for any of the basins, is there an existing coating to be removed.
 1. Response: No coatings are required for any of the basins.
- N. Please specify whether concrete floor coatings are required for both existing and new buildings and if so, which system?
 1. Response: This Response modifies the Response issued in Addendum No. 3 to Question BB. Per Sheet No. A10, Rooms 6-Restroom, 7-Break Room and 8-Laboratory get a floor finish of concrete stain.

PROJECT MANUAL

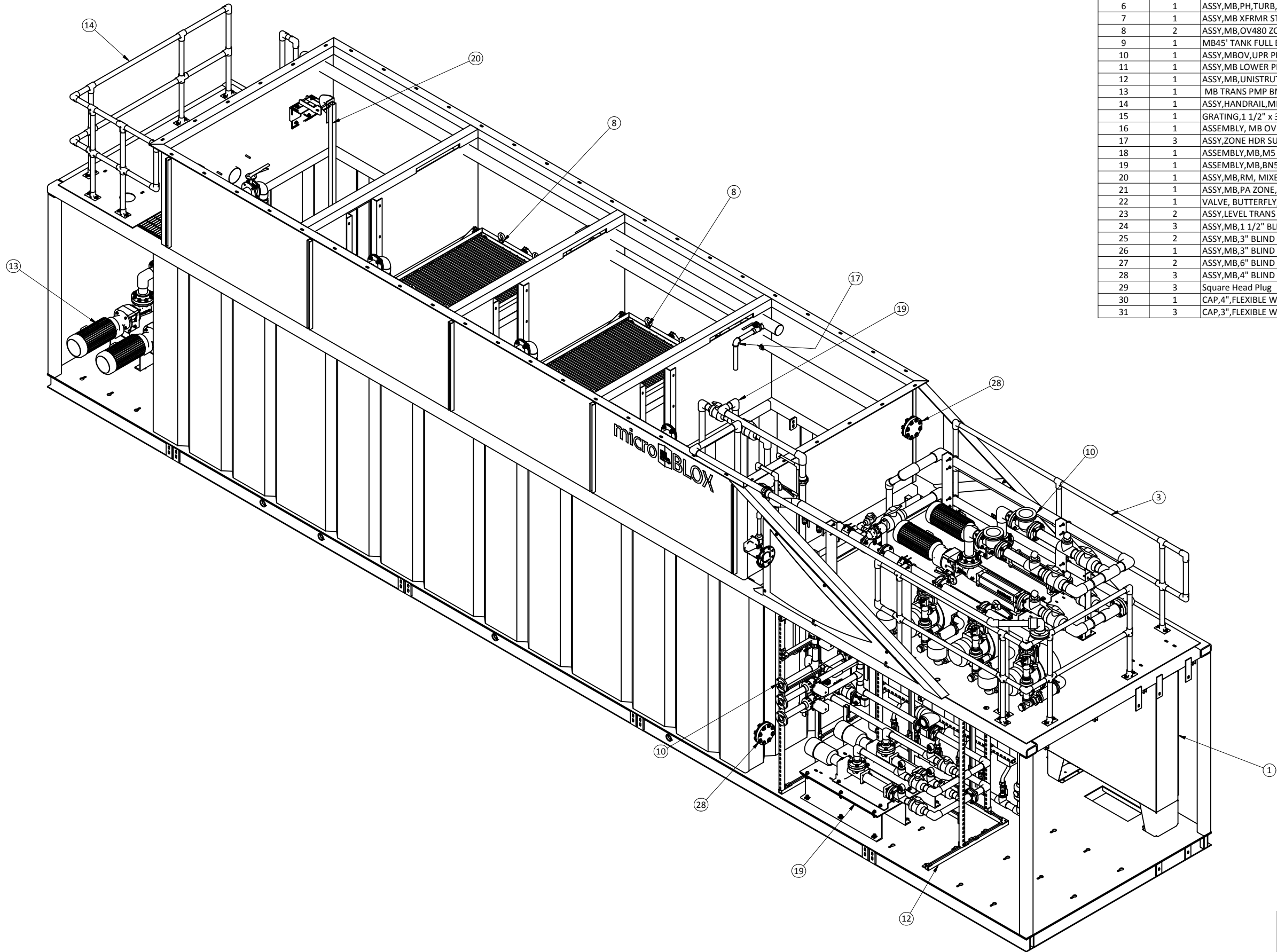
- A. 09900: Protective Coatings
 1. 09900, Page 5, 2.4, H. – **Delete** Entire Subsection.
- B. 09900: Protective Coatings: System F-4
 1. 09900: F4 – **Delete** in its entirety.

CONTRACT DRAWINGS

- A. REVISIONS TO DRAWINGS
 1. Sheet No. P1-02: EXISTING TREATMENT BUILDING UPPER LEVEL PLAN
 - a. Equipment Note 11 – **Delete** "Insulated / Jacketed Pipe System" and **Replace With** "Insulated / Jacketed Pipe System and Heat Trace System". **Add** "Heat Trace Manufacturer: Raychem; Model: 61SA2160 for the DI Pipes and Model: 5BTV1-CR for the SCH 80 PVC Pipe".
 - b. Equipment Note 11A – **Add** "Insulated / Jacketed Pipe System and Heat Trace System". **Add** "Heat Trace Manufacturer: Raychem; Model: 5BTV1-CR".
 2. Sheet No. S1-03: Proposed Treatment Building Floor Plan
 - a. Note to S1-03 – **ADD** "Section A/S1-03 Applies to the North, East, and West Walls. Section A/S1-02 Applies to the South Wall".
 3. Sheet No. S4-03: Concrete Details
 - a. Sidewalk Detail – **ADD** "L4x4x3/8" Ledger Angle (Galv) W/1/2" Diam SS EXP Anchors W/4" Embed @3'-0" OC And Within 6" OF Ends".

4. Sheet No. S4-03: Concrete Details
 - a. Pipe Encasement Detail – **Delete** "#4@18" W/ STD Hook into Top of Slab Each Side of Pipe With 1'-0 Min Embed into Pipe Encasement".
5. Sheet No. S4-04: Concrete Details
 - a. Pipe Encasement Detail – **Delete** "#4@18" W/ STD Hook into Top of Slab Each Side of Pipe With 1'-0 Min Embed into Pipe Encasement".
 - b. **Add** Floor Penetration Curb Detail – attached to this Addendum.
6. Sheet No. E3-04: Panel Schedules
 - a. For Panel X – Utilize Circuits 22 and 23 to power heat tracing systems on piping identified Equipment Notes 11 and 11A on Sheet No. P1-02.

END OF ADDENDUM



ITEM	QTY	DESCRIPTION	MATERIAL	PART NUMBER	TOTAL WEIGHT
1	1	ELECTRICAL PANEL	Generic	-	2000.000
2	2	DECAL, MICROBLOX LOGO	Generic	322-00293	0.102
3	1	LARGE PORCH HANDRAIL,MICROBLOX	ALUMINUM	234-134	86.573
4	1	MB TANK FLAG WITH DECAL		234-161	86.855
5	1	MB TANK FLAG WITH DECAL		234-189	86.855
6	1	ASSY,MB,PH,TURB,2CHEM PUMPS		LAW05-1-322	100.083
7	1	ASSY,MB XFRMR STAND,T1,PANEL		234-175	478.175
8	2	ASSY,MB,OV480 ZONE		LAW05-1-321	2420.436
9	1	MB45' TANK FULL BUILD TANK WELDMENT	CS	405-481	28108.647
10	1	ASSY,MBOV,UPR PRMT,BN17,ACTBV		234-474	498.673
11	1	ASSY,MB LOWER PRMT,6 UV		234-371	541.228
12	1	ASSY,MB,UNISTRUT,5HP LOOP		234-444	275.735
13	1	MB TRANS PMP BN17 ASSY		234-427	474.387
14	1	ASSY,HANDRAIL,MB,NO FS		234-430	62.045
15	1	GRATING,1 1/2" x 3/16" BAR,4" CROSS BAR CENTERS	Aluminum-6061	415-279	28.900
16	1	ASSEMBLY, MB OV UNITS,BLOWERS,3		LAW05-1-318	394.759
17	3	ASSY,ZONE HDR SUPPLY VALVE,LONG		234-329	27.325
18	1	ASSEMBLY,MB,M5 CEbrane DIFF		LAW05-1-319	626.043
19	1	ASSEMBLY,MB,BN5,MBT,FM		LAW05-1-320	324.502
20	1	ASSY,MB,RM, MIXER		234-344	128.123
21	1	ASSY,MB,PA ZONE,AERO		234-428	224.690
22	1	VALVE, BUTTERFLY, 3" KEYSTONE F222 EPDM	Steel, Cast	515-12	9.698
23	2	ASSY,LEVEL TRANS WITH FASTENERS		234-318	25.240
24	3	ASSY,MB,1 1/2" BLIND FLANGE		234-392	5.664
25	2	ASSY,MB,3" BLIND FLANGE,PVC		234-383	9.075
26	1	ASSY,MB,3" BLIND FLANGE		234-391	6.805
27	2	ASSY,MB,6" BLIND FLANGE,PVC		234-382	22.870
28	3	ASSY,MB,4" BLIND FLANGE,PVC		234-381	21.971
29	3	Square Head Plug	304SS	575-1264	1.935
30	1	CAP,4",FLEXIBLE WITH CLAMP	Generic	575-1094	0.500
31	3	CAP,3",FLEXIBLE WITH CLAMP	Generic	575-1263	1.500

SHOP NOTES: (UNLESS OTHERWISE SPECIFIED)
1. ALL DIMENSIONS ARE ±1/16"
2. DIMENSIONS ARE TO CENTER LINES OF HOLES / SLOTS.
3. BREAK AND DEBUR ALL SHARP CORNERS AND EDGES.
4. DIMENSIONS WITHIN () ARE FOR Q.C. / REFERENCE ONLY.

ID #	LAW05-4-300
QUANTITY	1
MATERIAL	SEE BOM
FINISH	SEE BOM
COST CLASS	
WEIGHT	N/A

						REF. FROM		DO NOT SCALE PRINTS				
						DATE (mm/dd/yy)	9/19/2017	WORKMANSHIP STANDARD W1-7501-01 APPLIES				
INITIAL RELEASE			-		A	DRAWN	GDG	ORIGINAL S.O.	DWG. NO.	LAW05-4-300	SHEET 1 OF 9	REV A
REVISION DESCRIPTION	EN/ECO	BY	CHECK'D	DATE	REV	CHECK'D						

D

©COPYRIGHT 2010 OVO
ALL RIGHTS RESERVED - REV E

THIS DRAWING CONTAINS CONFIDENTIAL PROPRIETARY INFORMATION OF OVIVO, AND ITS AFFILIATES, AND IS NOT TO BE DISCLOSED NOR TO BE USED EXCEPT FOR EVALUATING PROPOSALS OF OVIVO OR INSTALLING, OPERATING OR MAINTAINING OVIVO EQUIPMENT. UNLESS OTHERWISE AUTHORIZED IN WRITING BY OVIVO. UNCONTROLLED COPY IF PRINTED

THIRD ANGLE PROJECTION

OVIVO

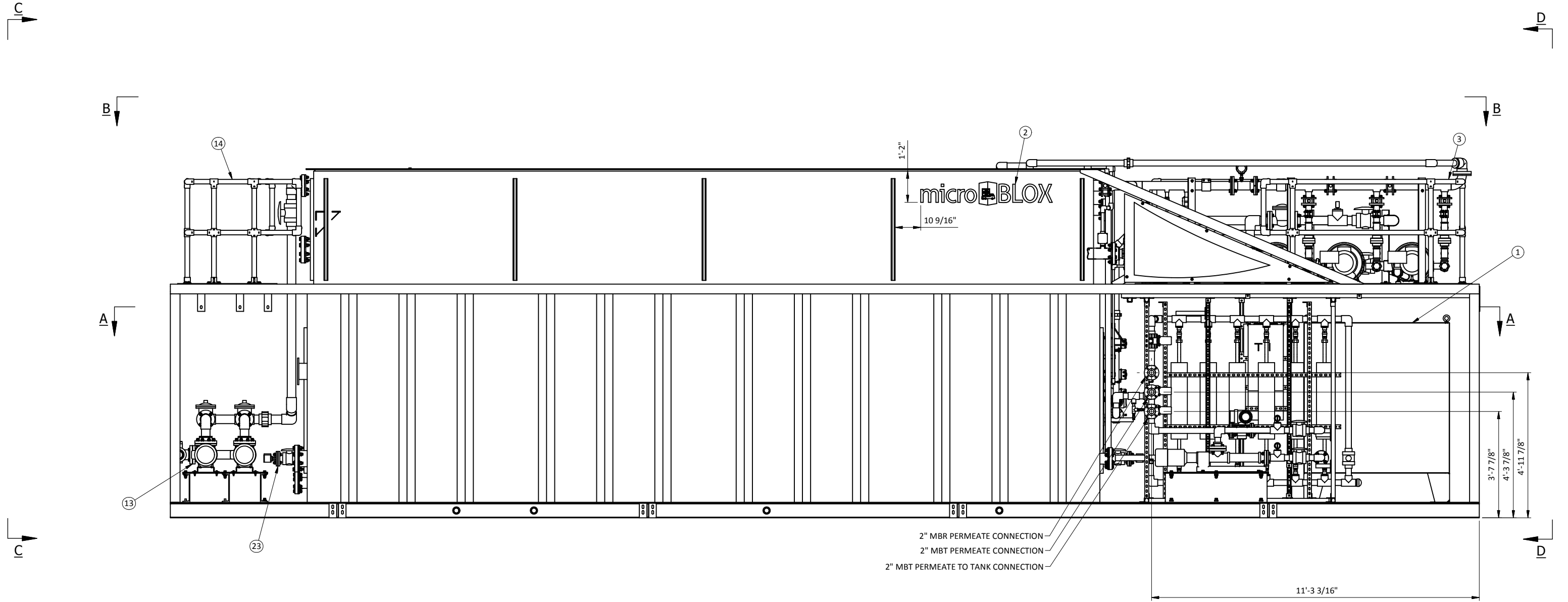
Bringing water to life

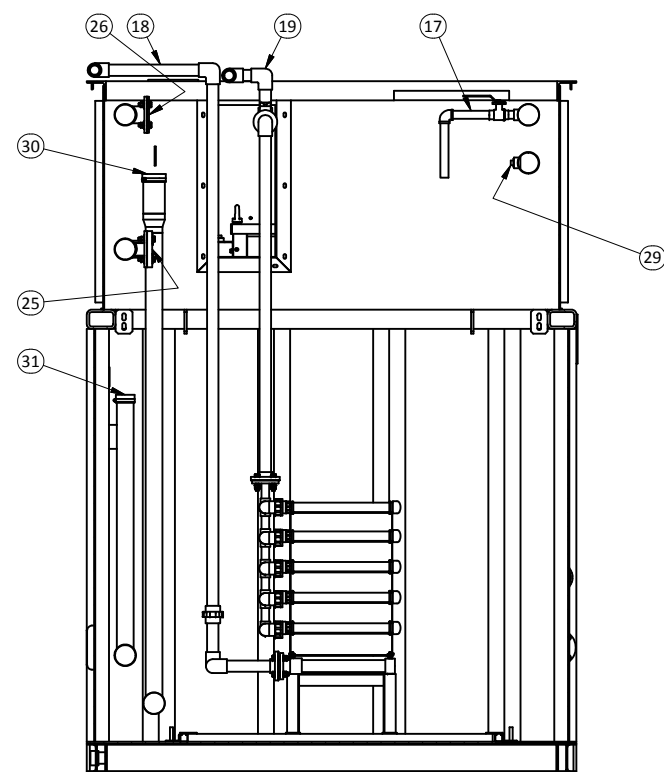
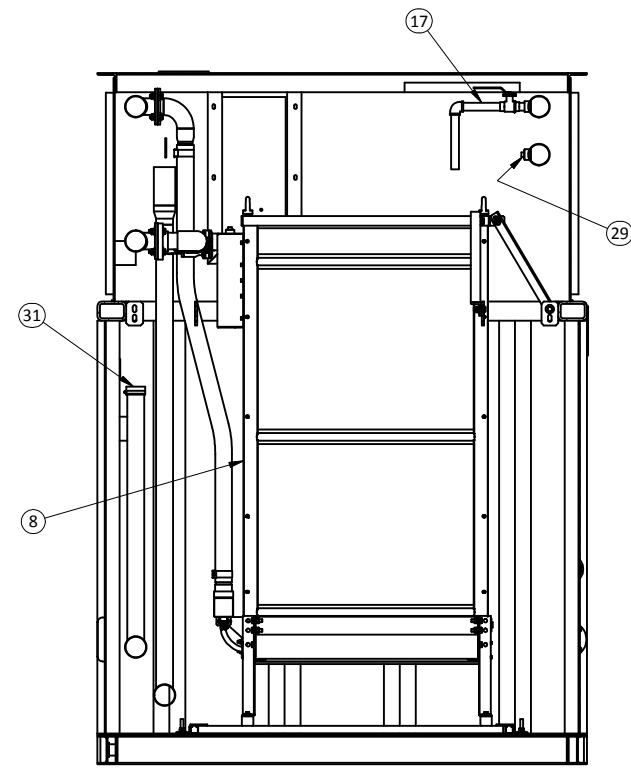
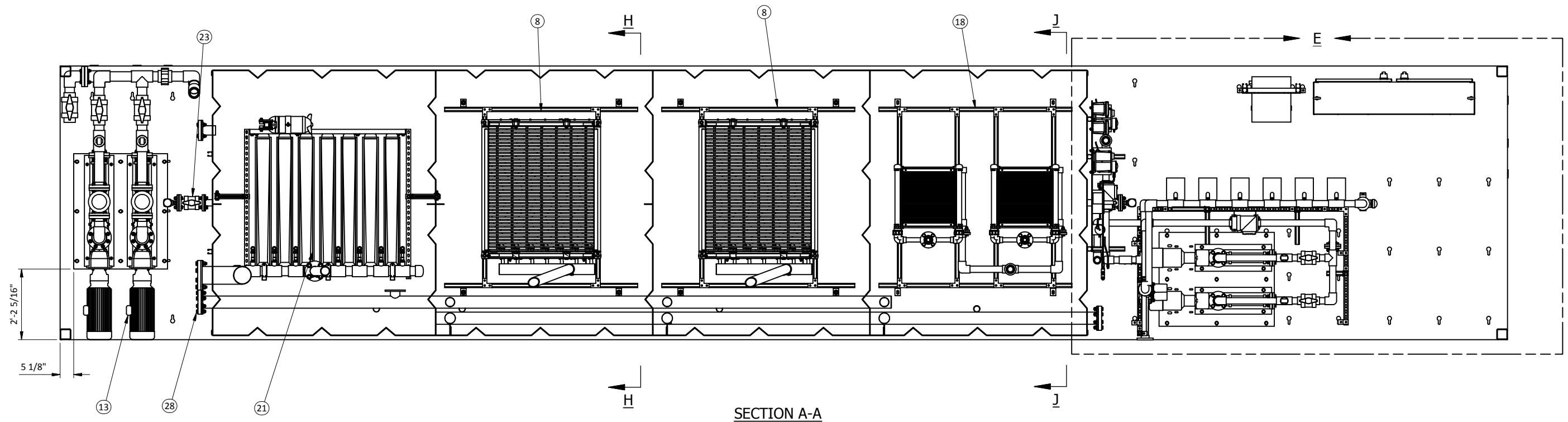
TANK 4 ASSEMBLY

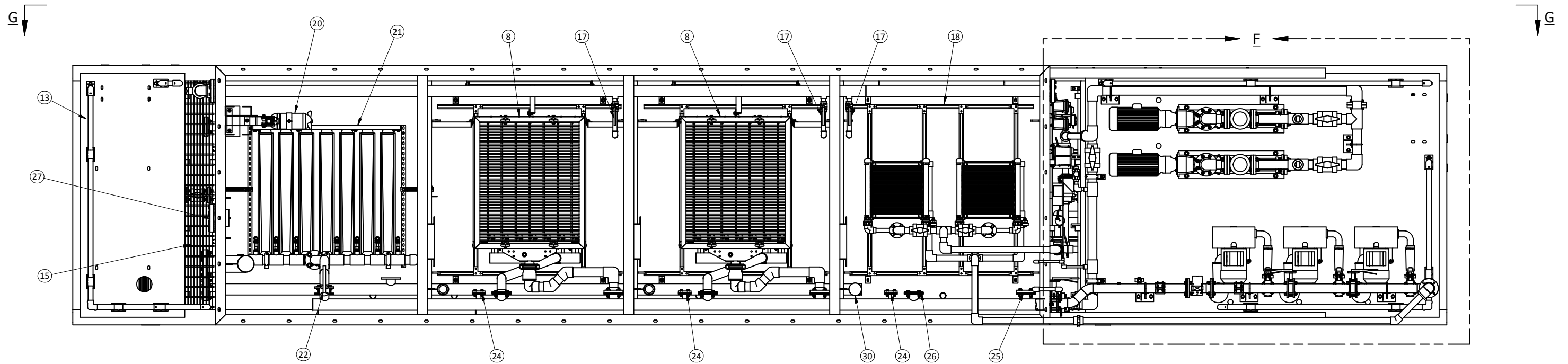
DWG. NO. **LAW05-4-300**

SHEET **1** OF **9**

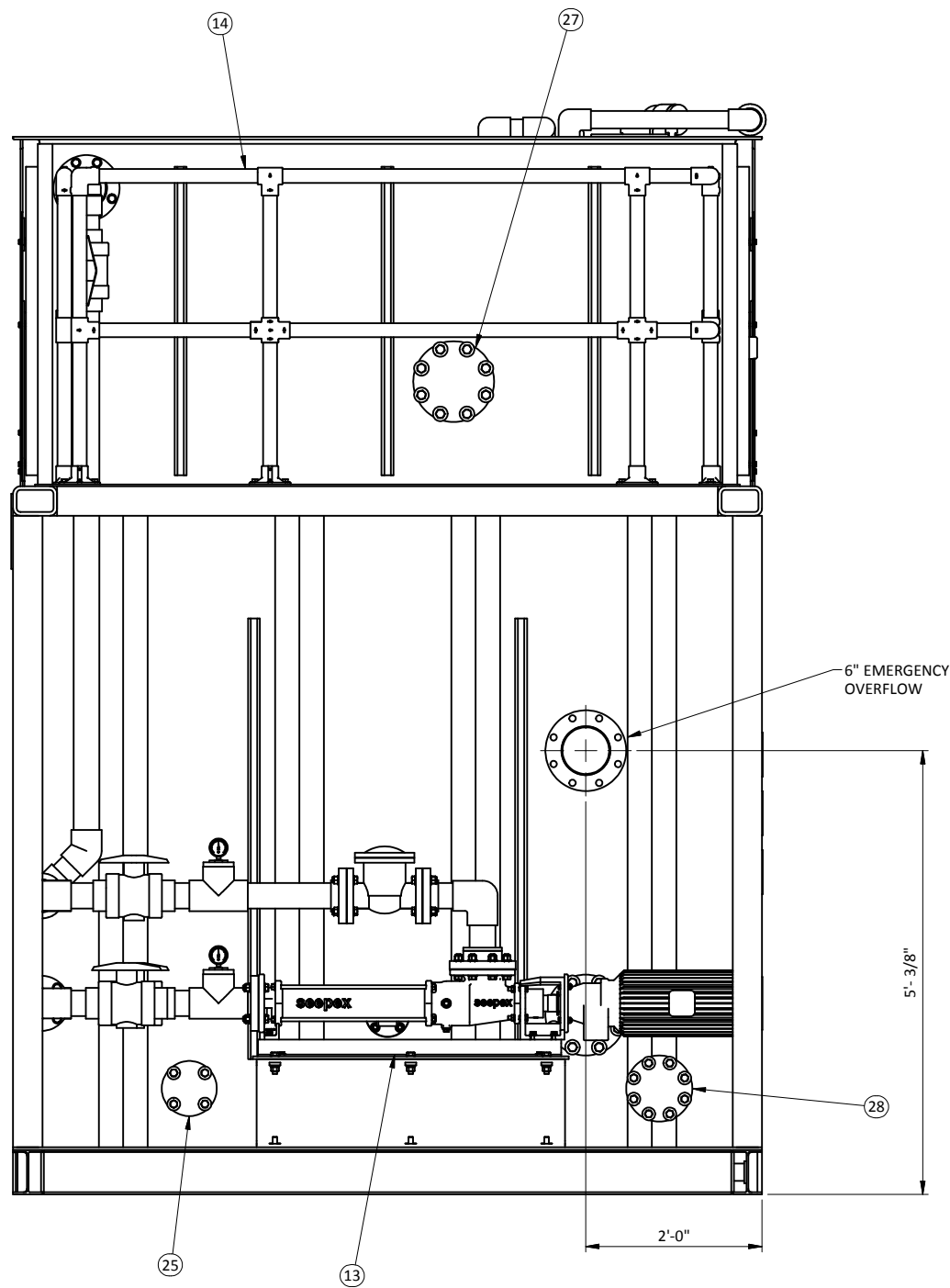
REV **A**



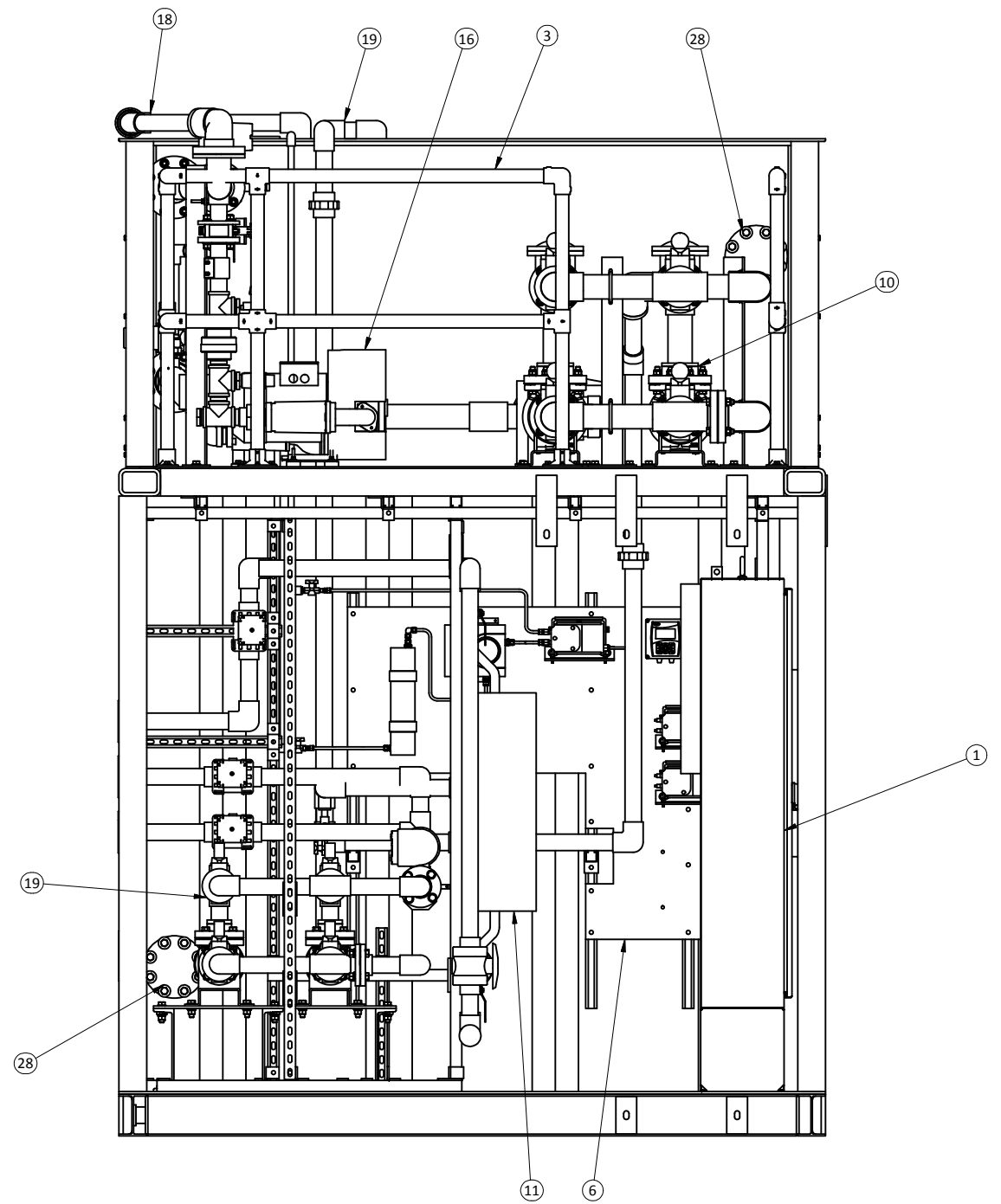




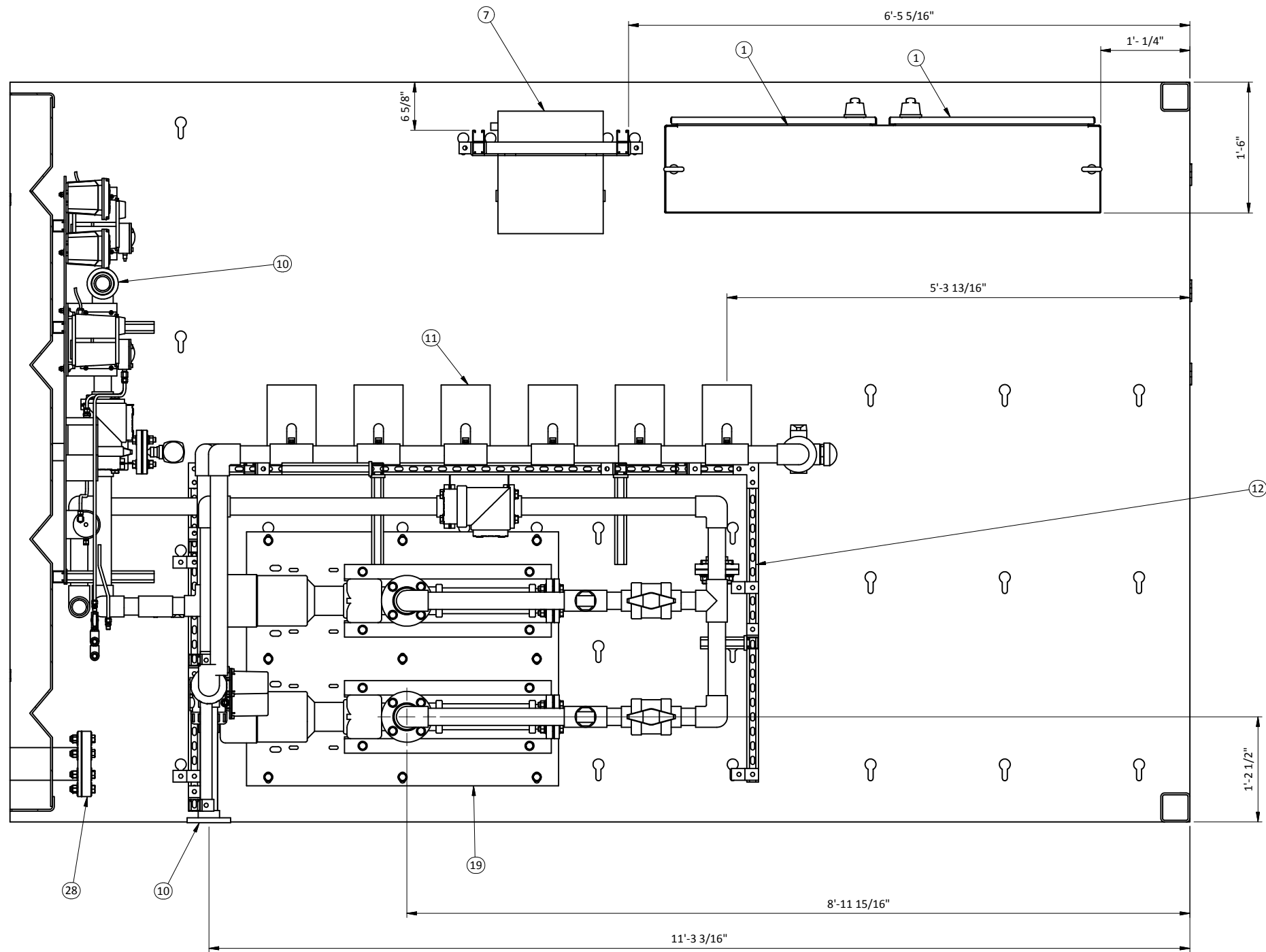
VIEW B-B



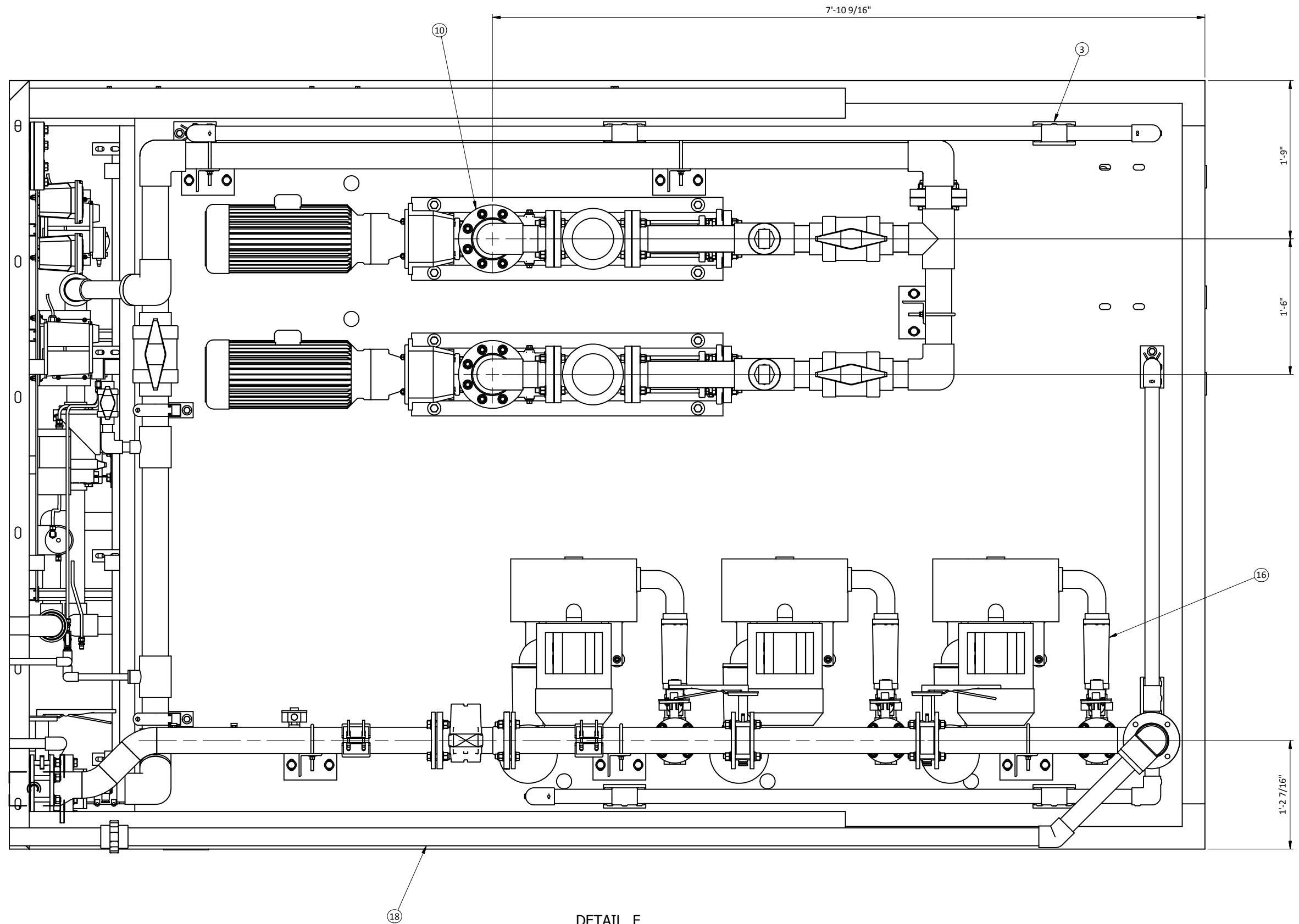
VIEW C-C



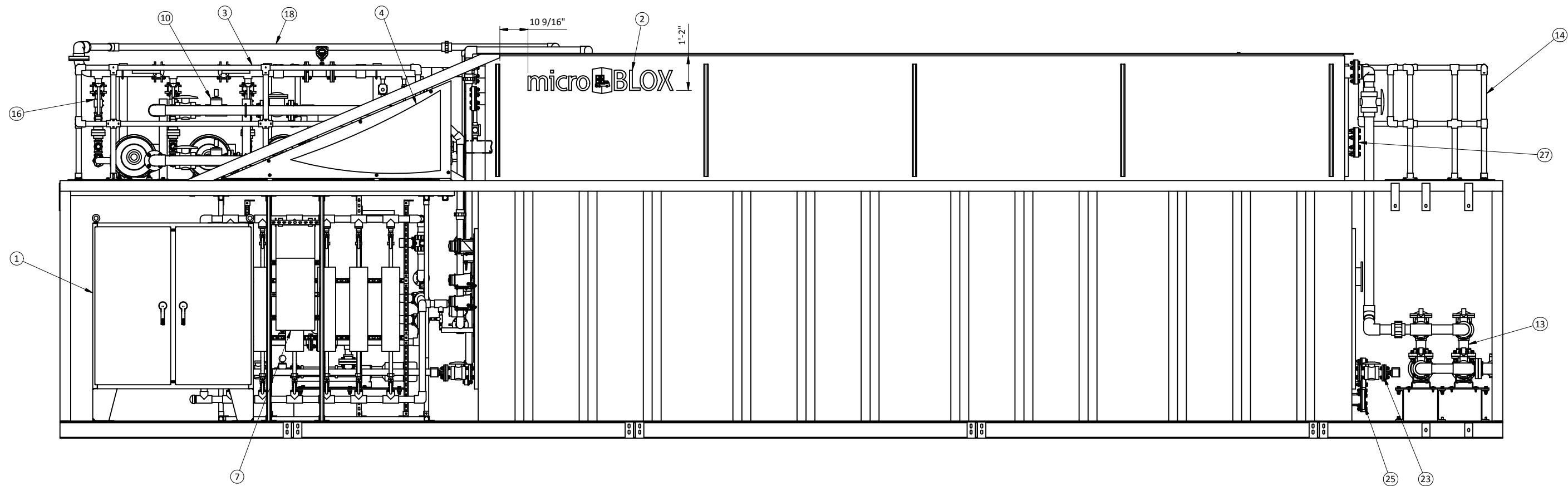
VIEW D-D
NO CONNECTION POINTS THIS END



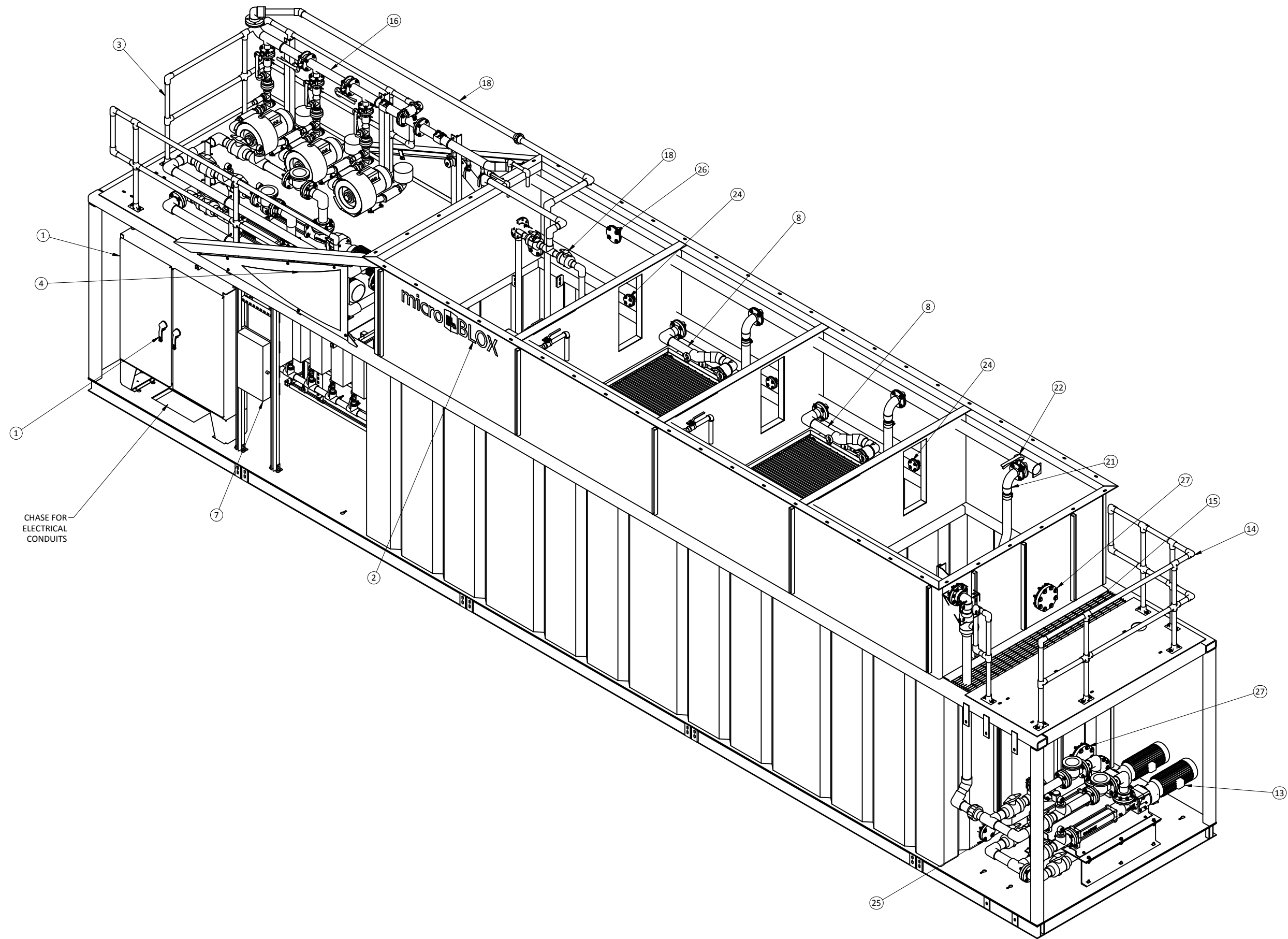
DETAIL E



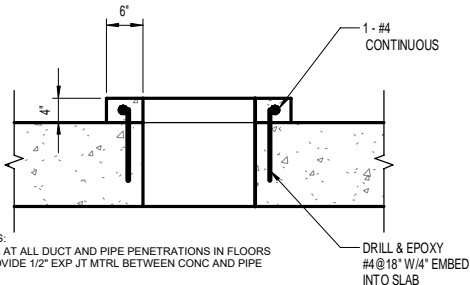
DETAIL F



VIEW G-G



CHASE FOR
ELECTRICAL
CONDUITS



1

FLOOR PENETRATION CURB DETAIL

Scale: No Scale