

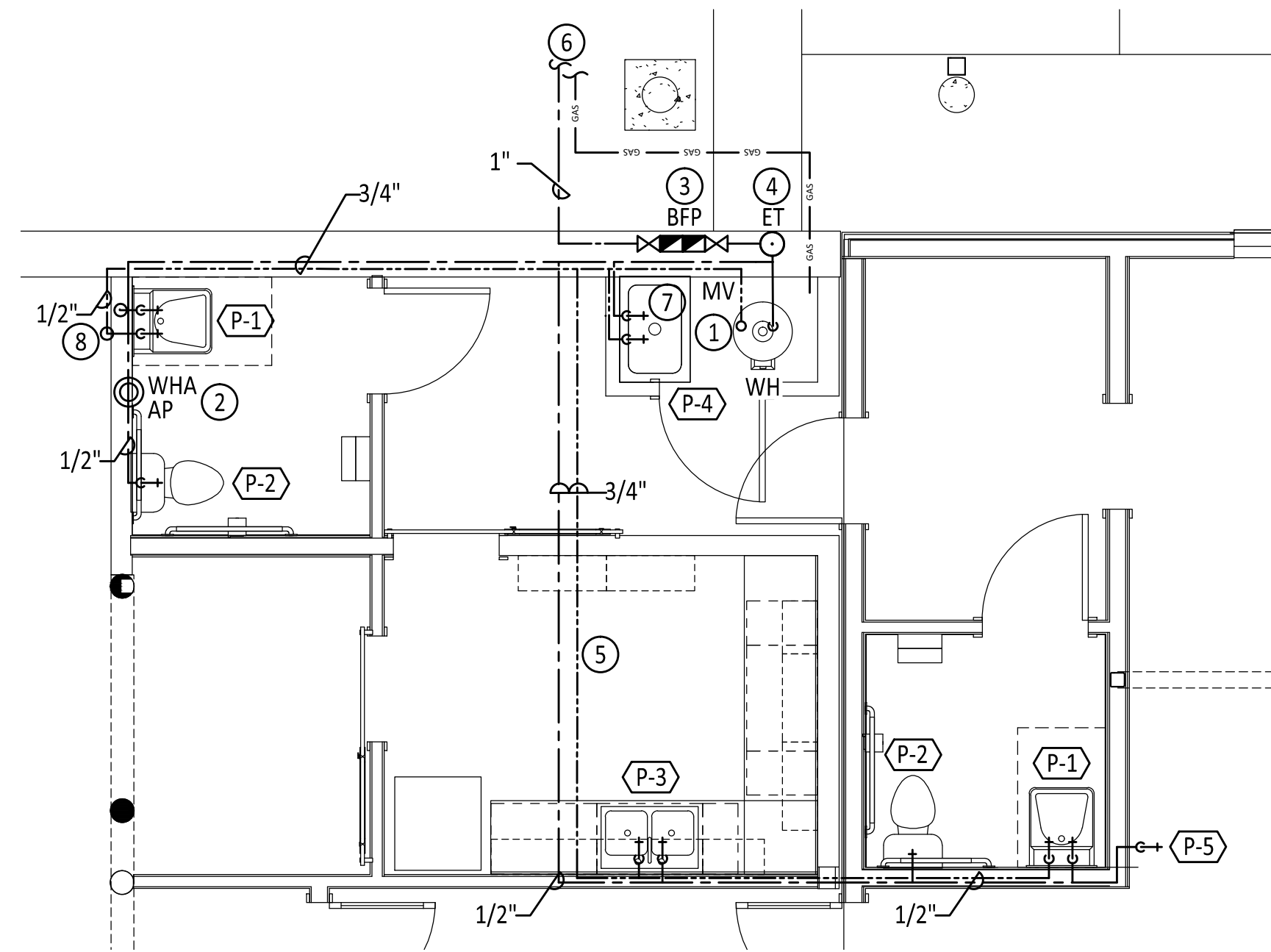
REVISIONS:		
NO.	DATE	DESCRIPTION

GENERAL SHEET NOTES:

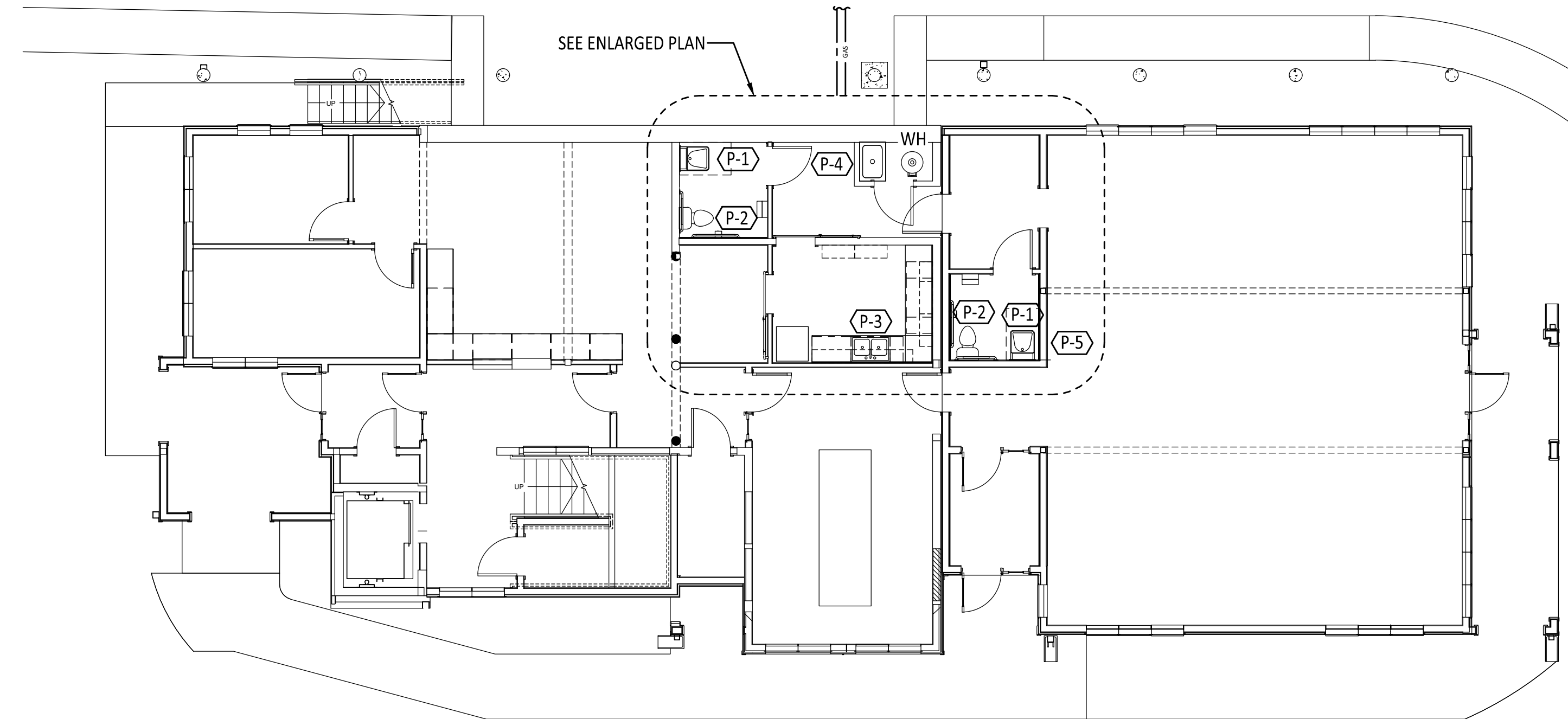
- A. ALL PIPE ROUTES SHOWN ARE DIAGRAMMATIC. FIELD COORDINATE FINAL LOCATIONS PRIOR TO INSTALL.
- B. SEE WATER HEATER DETAIL ON SHEET P001 FOR ADDITIONAL REQUIREMENTS.
- C. WALL BOX DEVICES FOR COUNTER TOP EQUIPMENT. FIELD COORDINATE WITH OWNER AND ARCHITECT PRIOR TO INSTALL.

KEYED NOTES:

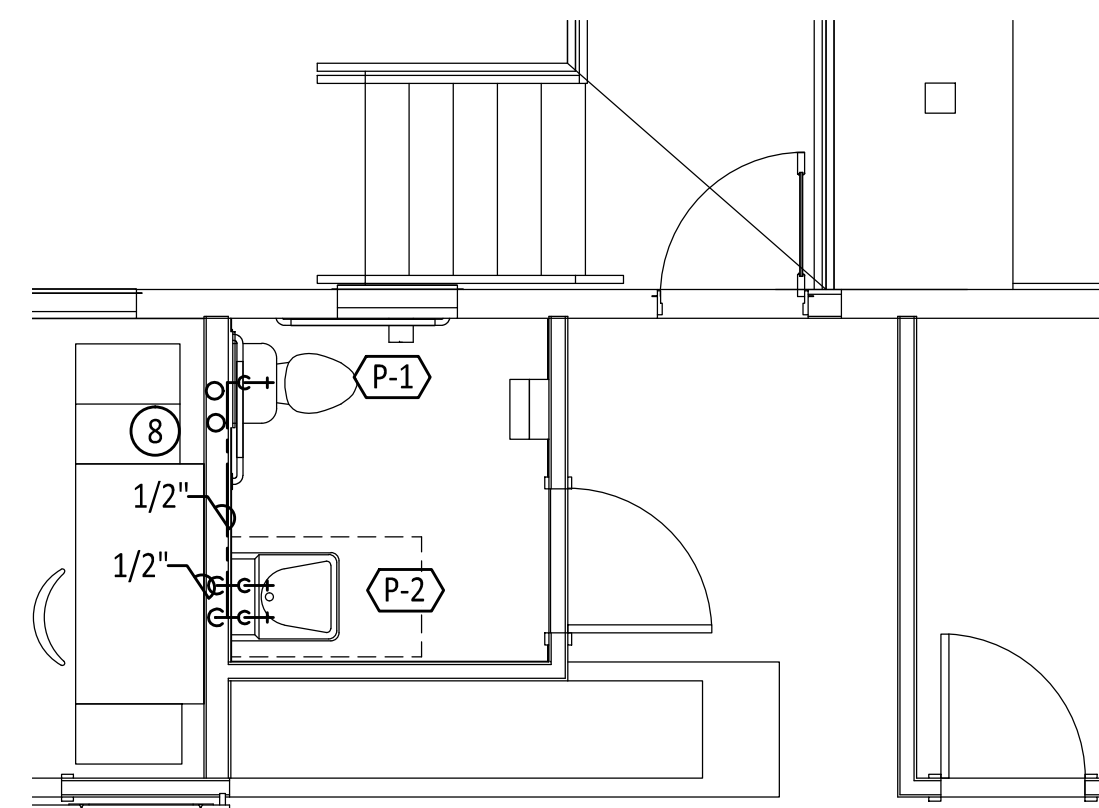
- 1. INSTALL WATER HEATER IN MECH ROOM. COORDINATE WITH ELECTRICAL CONTRACTOR FOR POWER ROUGH-IN LOCATION PRIOR TO INSTALL. INSTALL PER MANUFACTURER RECOMMENDATIONS.
- 2. INSTALL WATER HAMMER ARRESTOR WITH ACCESS PANEL FOR SERVICE. COORDINATE ACCESS PANEL LOCATION WITH ARCHITECT PRIOR TO INSTALL.
- 3. INSTALL UPC APPROVED REDUCED PRESSURE BACKFLOW PREVENTION DEVICE IN MECHANICAL CLOSET. ROUTE REDUCE PRESSURE DISCHARGE PIPE TO FLOOR SINK AND TERMINATE WITH INDIRECT CONNECTION.
- 4. INSTALL PRESSURE REDUCING VALVE AND EXPANSION TANK DOWNSTREAM OF "BFP" AND ROUTE PIPING UP INTO CEILING SPACE.
- 5. ROUTE DOMESTIC WATER SUPPLY PIPING ABOVE LAY-IN CEILING IN DROP CEILING AREAS ONLY. FEED PIPE DOWN FROM CEILING SPACE TO FIXTURES AS SHOWN.
- 6. SEE CIVIL PLANS FOR CONTINUATION .
- 7. INSTALL MIXING VALVE "MV" PER UPC AND MANUFACTURER PIPING DIAGRAM. SET MIXING VALVE TO 110°F.
- 8. ROUTE HW/CW FROM FIRST FLOOR CEILING SPACE UP TO SECOND FLOOR RESTROOM LOCATION.



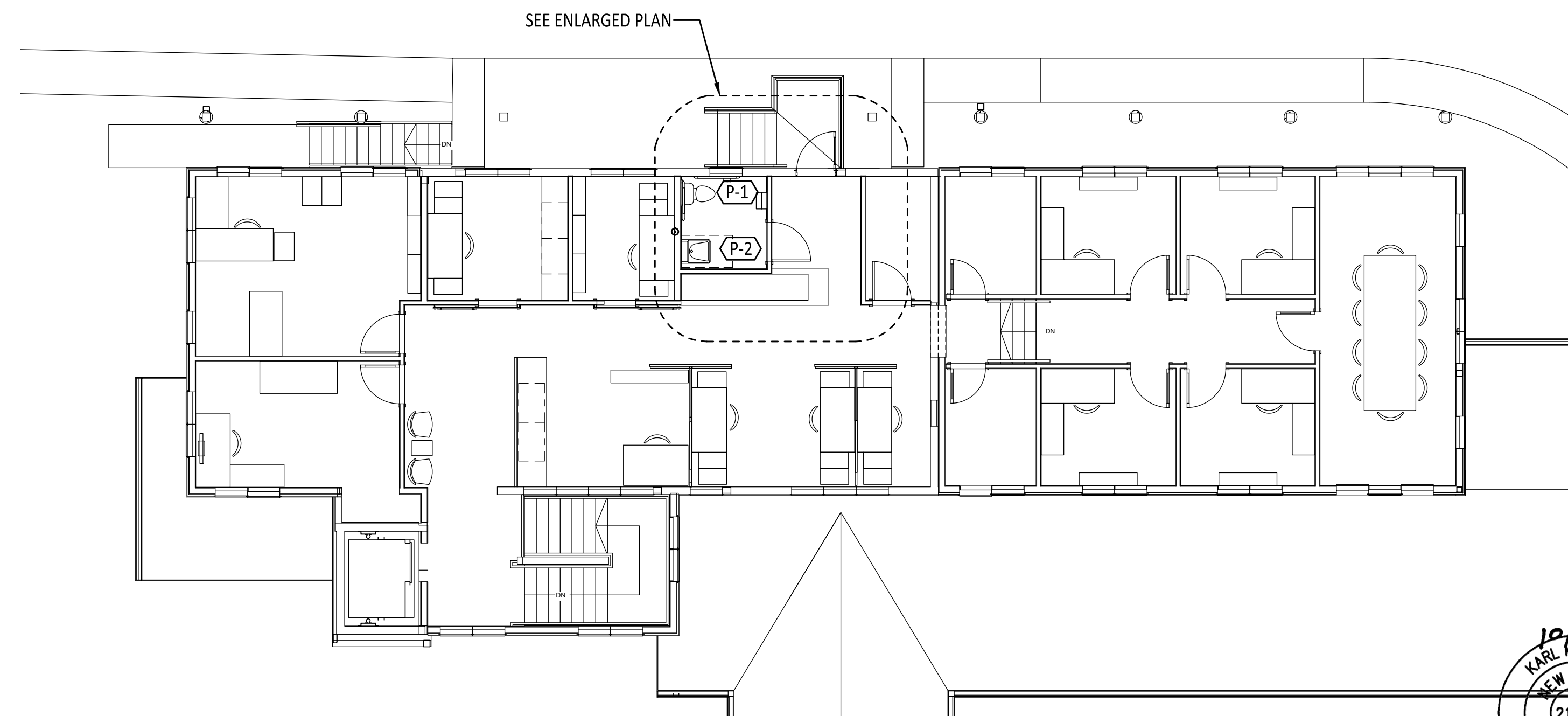
PLUMBING DOMESTIC WATER PLAN: FIRST FLOOR ENLARGED
SCALE: 1/8" = 1'-0"



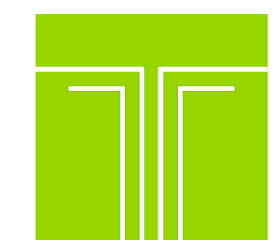
PLUMBING DOMESTIC WATER PLAN: FIRST FLOOR OVERALL
SCALE: 1/8" = 1'-0"



PLUMBING DOMESTIC WATER PLAN: SECOND FLOOR ENLARGED
SCALE: 1/8" = 1'-0"



PLUMBING DOMESTIC WATER PLAN: SECOND FLOOR OVERALL
SCALE: 1/8" = 1'-0"



TIPTON ENGINEERING
427 LUISA PLACE
SANTA FE, NM 87505
KARLT@TIPTONENGINEERING.CO
WWW.TIPTONENGINEERING.CO

MD	PD	ED	PM

PROJECT #: