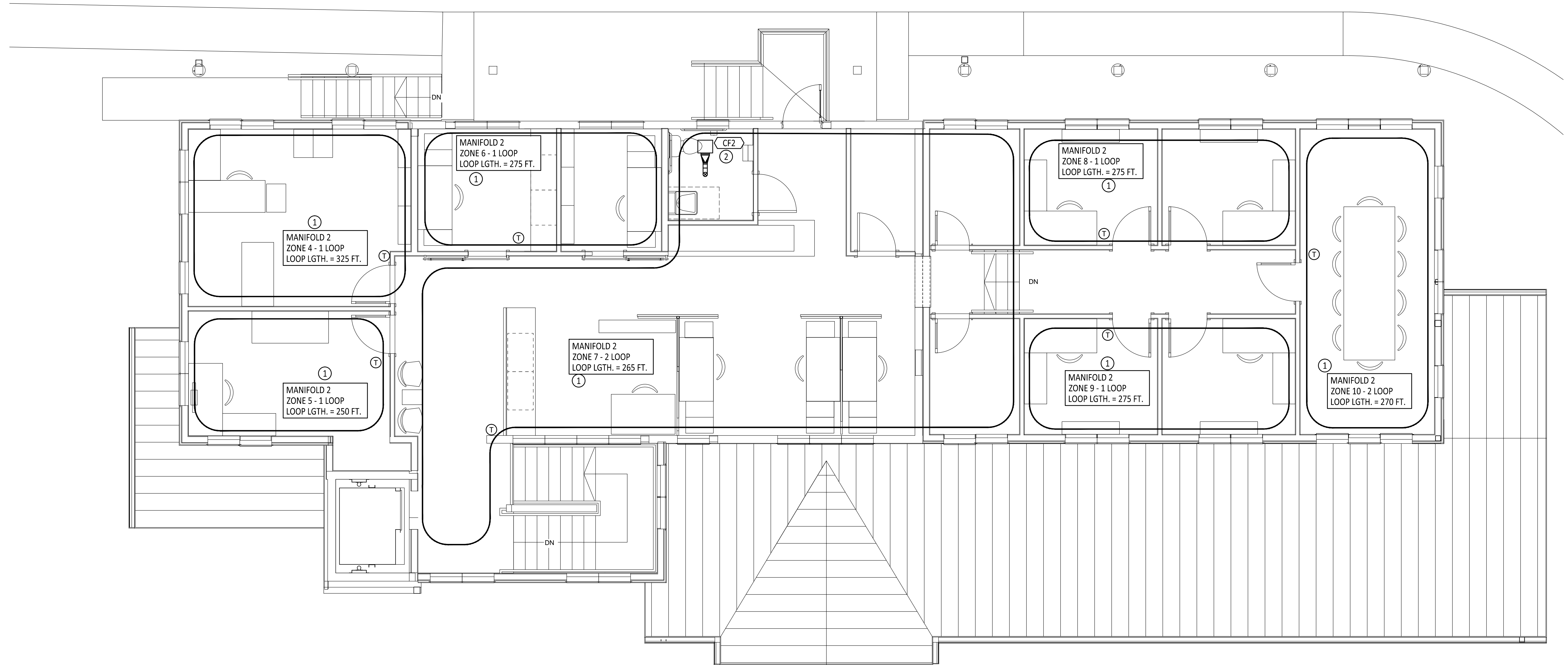


**GENERAL SHEET NOTES:**

- A. COORDINATE WITH ELECTRICAL CONTRACTOR FOR ALL 120V VALVE POWER REQUIREMENTS AND 24V TRANSFORMER LOCATIONS.
- B. ALL PIPING TO BE ROUTED OVER HEAD AND DOWN IN WALL FURR-OUT TO BASEBOARD HEATER LOCATIONS.

**KEYED NOTES:** ○

- 1. SEE DETAILS AND DIAGRAMS ON SHEET M001 FOR ALL REQUIREMENTS. COORDINATE WITH ARCHITECTURAL DRAWINGS FOR FINISH AND FLOOR STRUCTURE TYPES.
- 2. INSTALL CEILING FAN ABOVE WATER CLOSET FIXTURE AND ROUTE 4"Ø DUCT UP THROUGH CEILING. PROVIDE ROOF CAP PER UMC.



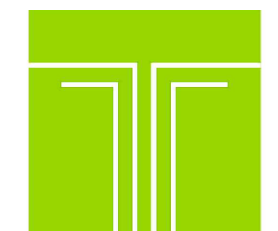
**MECHANICAL SECOND FLOOR PLAN**  
SCALE: 1/4" = 1'-0"

PROJ. NO:	2018-600
ISSUE DATE:	10/18/18
ISSUED FOR:	CONSTRUCTION

NO	DATE	DESCRIPTION

DRAFTED BY:  
APPROVED BY:  
SCALE: As indicated

MECHANICAL  
SECOND FLOOR  
PLAN  
**M102**



**TIPTON ENGINEERING**  
427 LUISA PLACE  
SANTA FE, NM 87505  
KARLT@TIPTONENGINEERING.CO  
WWW.TIPTONENGINEERING.CO

MD	PD	ED	PM
PROJECT #:			

THIS DESIGN IS CONFIDENTIAL AND PROPRIETARY OF TPTON ENGINEERING