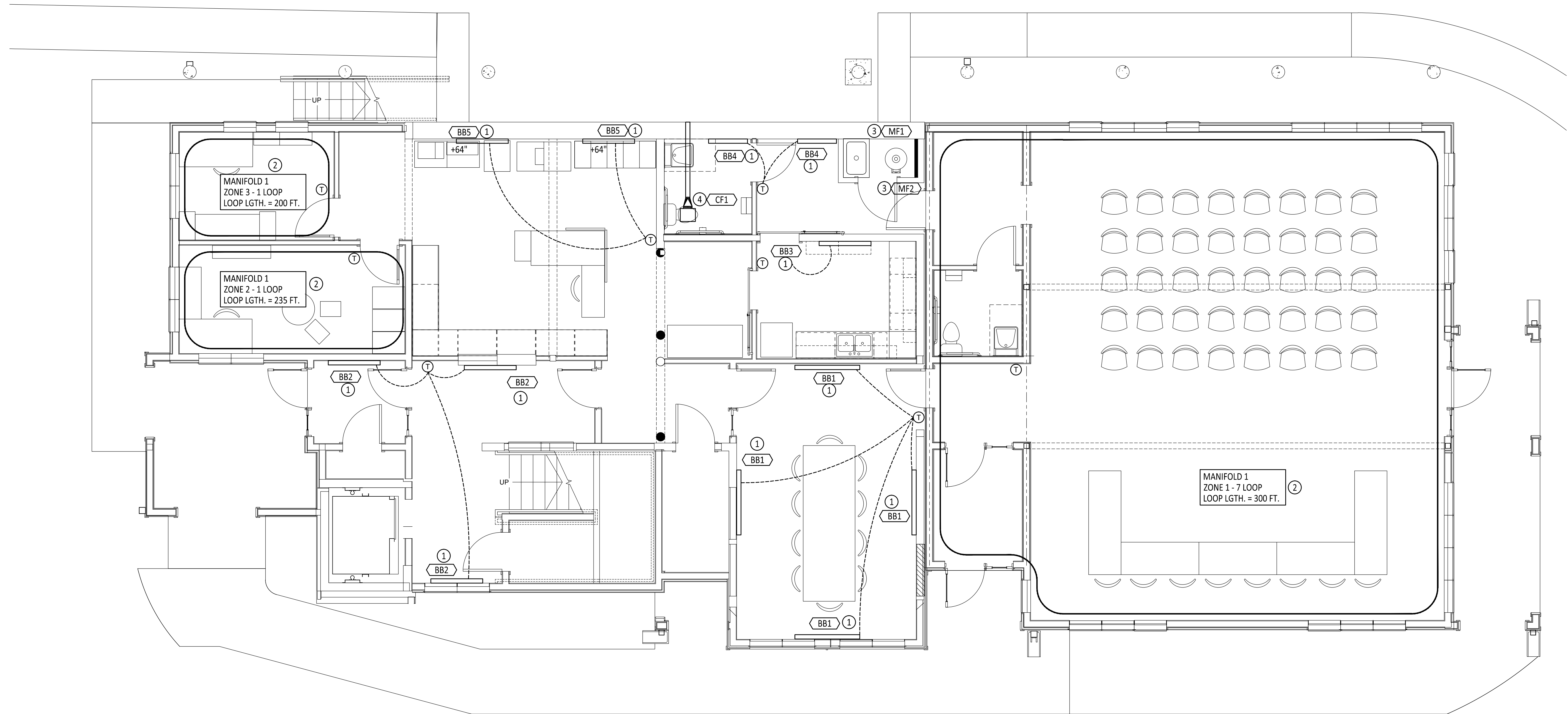


GENERAL SHEET NOTES:

- A. COORDINATE WITH ELECTRICAL CONTRACTOR FOR ALL 120V VALVE POWER REQUIREMENTS AND 24V TRANSFORMER LOCATIONS.
- B. ALL PIPING TO BE ROUTED OVER HEAD AND DOWN IN WALL FURR-OUT TO BASEBOARD HEATER LOCATIONS.

KEYED NOTES: ○

- 1. MULTIPLE BASEBOARD UNITS SERVING ONE ZONE TO BE PIPED IN PARALLEL DOWNSTREAM OF TWO WAY OR THREE WAY CONTROL VALVE. FIELD COORDINATE VALVE LOCATIONS IN MECHANICAL ROOM WITH ELECTRICAL CONTRACTOR PRIOR TO INSTALL.
- 2. SEE DETAILS AND DIAGRAMS ON SHEET M001 FOR ALL REQUIREMENTS. COORDINATE WITH ARCHITECTURAL DRAWINGS FOR FINISH AND FLOOR STRUCTURE TYPES.
- 3. INSTALL RADIANT MANIFOLDS ON MECHANICAL ROOM WALL. FIELD COORDINATE LOCATIONS FOR ACCESS AND MAINTENANCE PRIOR TO INSTALL.
- 4. INSTALL CEILING FAN ABOVE WATER CLOSET FIXTURE AND ROUTE 4"Ø DUCT TO EXTERIOR WALL. PROVIDE WALL CAP PER UMC.



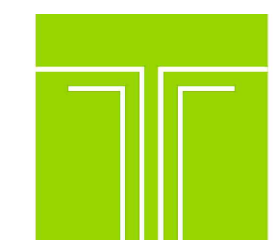
MECHANICAL GROUND FLOOR PLAN
SCALE: 1/4" = 1'-0"

PROJ. NO:	2018-600
ISSUE DATE:	10/18/18
ISSUED FOR:	CONSTRUCTION

NO	DATE	DESCRIPTION

DRAFTED BY:
APPROVED BY:
SCALE: As indicated

**MECHANICAL
GROUND FLOOR
PLAN
M101**



TIPTON ENGINEERING
427 LUISA PLACE
SANTA FE, NM 87505
KARLT@TIPTONENGINEERING.CO
WWW.TIPTONENGINEERING.CO

MD	PD	ED	PM

PROJECT #:

THIS DESIGN IS CONFIDENTIAL AND PROPRIETARY OF LDC INC. NO REUSE AT ANY OTHER COMPANY.