

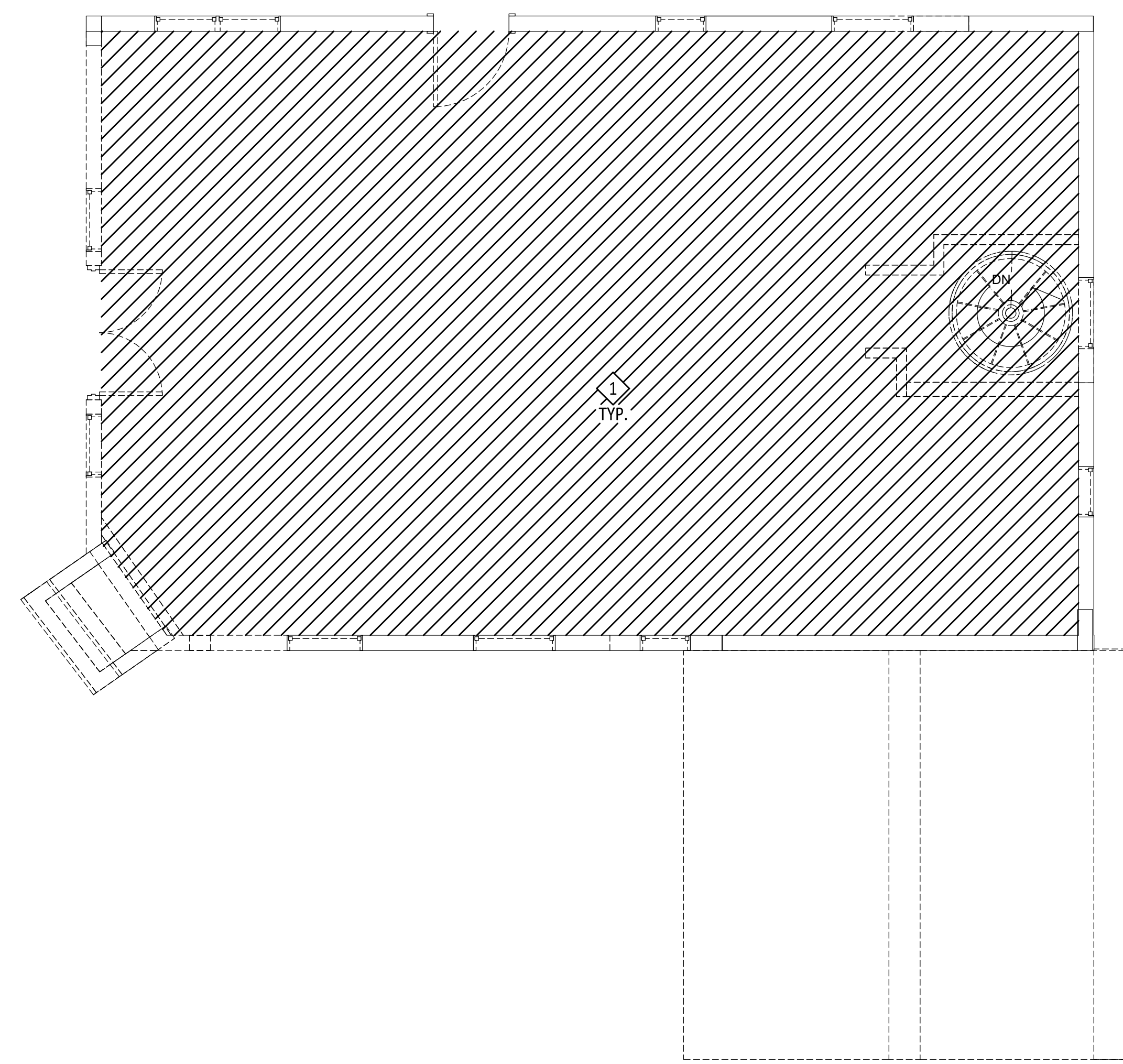
VTSV ADMINISTRATION BUILDING

DESIGN DEVELOPMENT

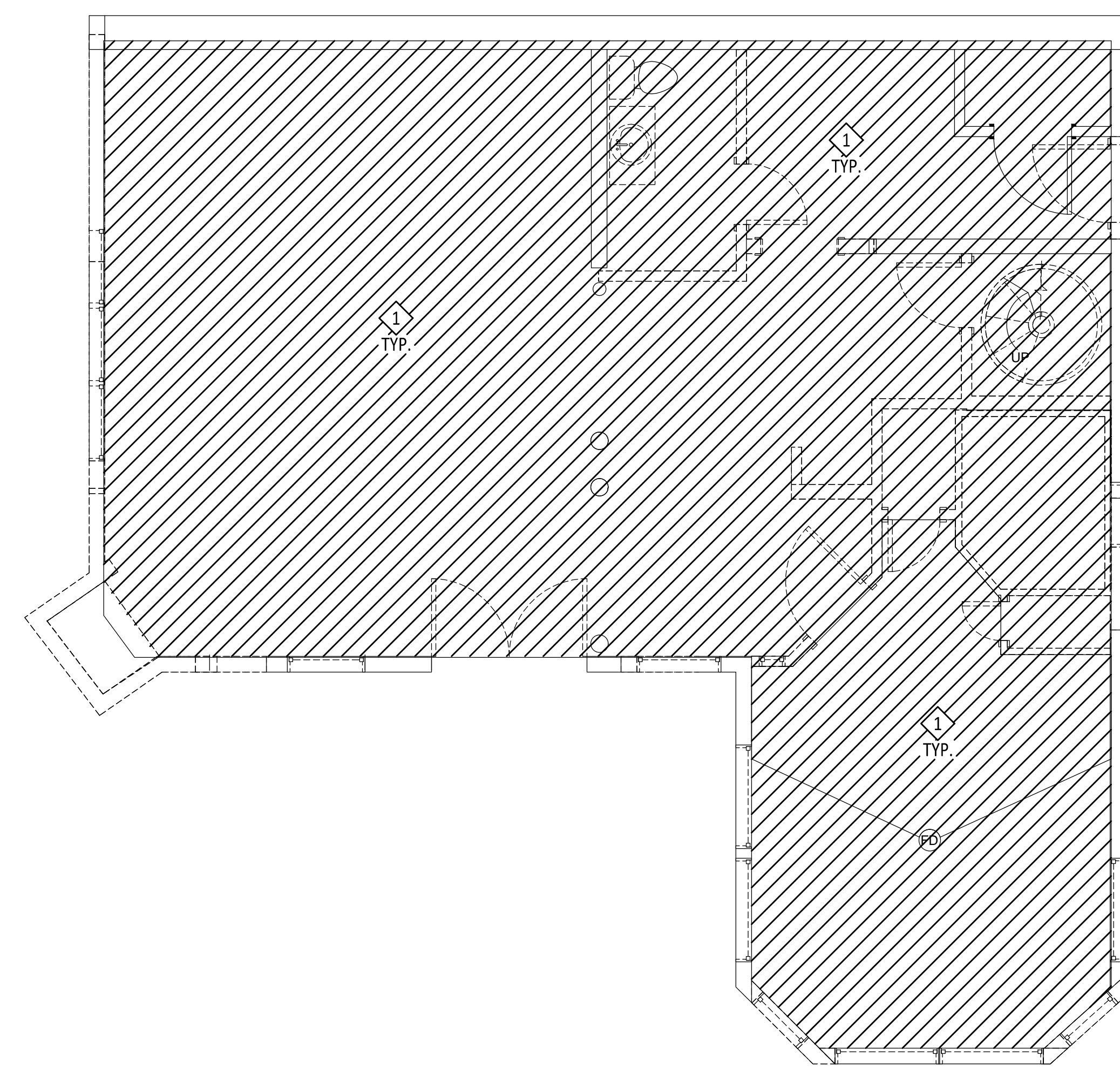
1346 NM 150, VILLAGE OF TAOS SKI VALLEY, NM 87525

KEYED NOTES: ◇

1. REMOVE ALL EXISTING LIGHTING, SPECIAL SYSTEMS, POWER, WIRE, AND RACEWAY FROM EXISTING BUILDING BACK TO EXISTING PANELBOARD LOCATION. REMOVE EXISTING PANELBOARD, SERVICE DISCONNECT, AND ALL SERVICE FEEDERS BACK TO EXISTING UTILITY TRANSFORMER LOCATION.



 **ELECTRICAL DEMOLITION PLAN: SECOND FLOOR**
SCALE: 1/4" = 1'-0"



 **ELECTRICAL DEMOLITION PLAN: GROUND FLOOR**
SCALE: 1/4" = 1'-0"

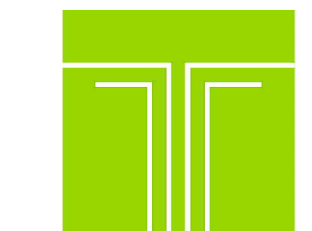
PROJ. NO:	2018-600
ISSUE DATE:	10/18/18
ISSUED FOR:	CONSTRUCTION

NO	DATE	DESCRIPTION

DRAFTED BY:
APPROVED BY:

SCALE: As indicated

**ELECTRICAL
DEMOLITION
PLAN**
ED101



TIPTON ENGINEERING
427 LUISA PLACE
SANTA FE, NM 87505
KARLT@TIPTONENGINEERING.CO
WWW.TIPTONENGINEERING.CO

MD	PD	ED	PM

PROJECT #: