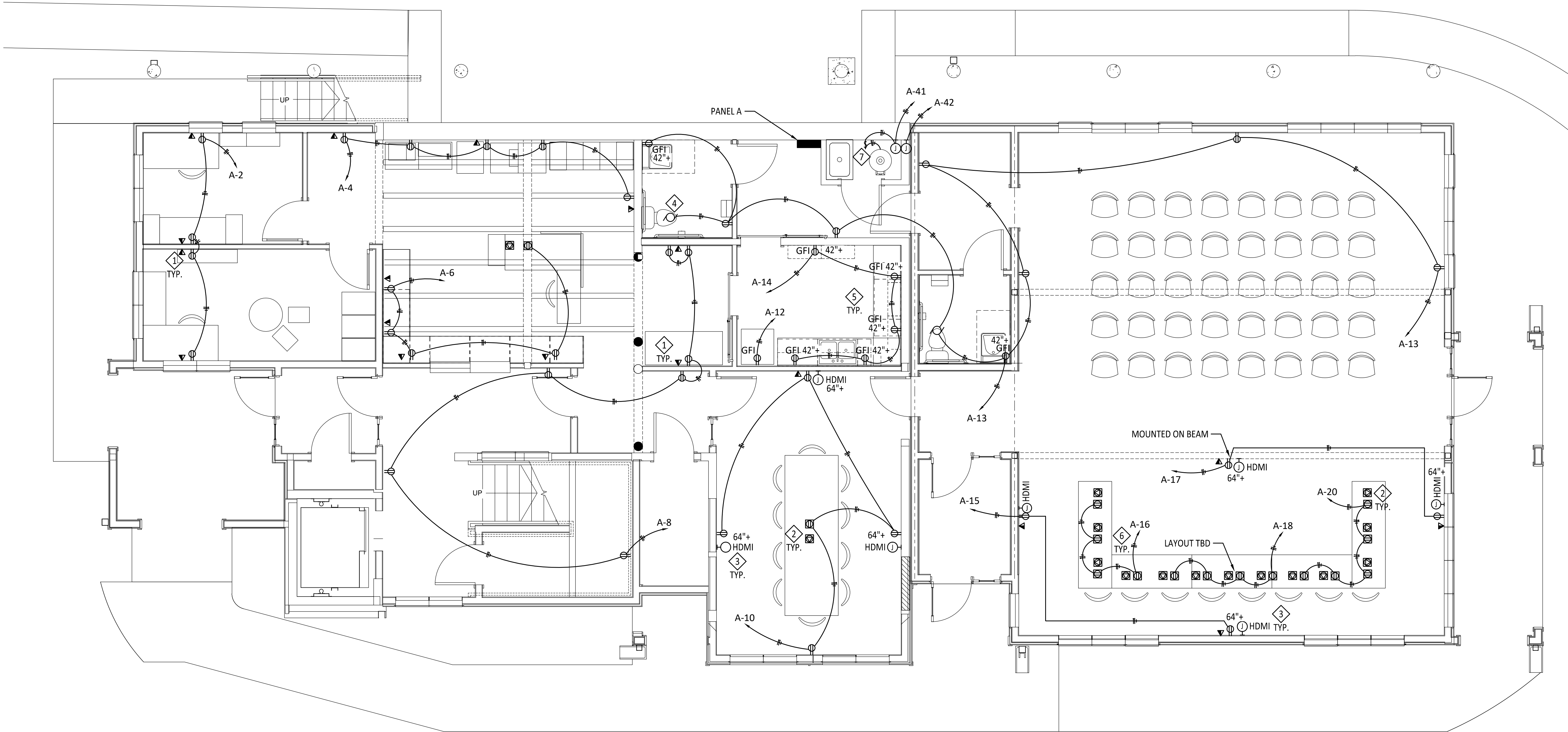


GENERAL SHEET NOTES:

- A. SEE TECHNICAL SPECIFICATIONS FOR ADDITIONAL REQUIREMENTS.
- B. ALL DATA WIRING TO BE CAT6 TYPE. COORDINATE WITH VTSV IT.

KEYED NOTES:◇

1. INSTALL DATA DEVICE WITH 3/4" CONDUIT FROM DEVICE UP TO CEILING SPACE. SEE "TELEPHONE/DATA DEVICE FACEPLATE" DETAIL. PROVIDE ALL DATA/TELEPHONE WIRE FACEPLATE AND JACK DEVICES.
2. PROVIDE AND INSTALL "LEGRAND" MODEL 6ATC2P WITH DUPLEX RECPT. AND 4 CAT6 DATA PORTS. COORDINATE RING TYPE AND COLOR WITH ARCHITECT.
3. PROVIDE AND INSTALL "ARLINGTON" MODEL TVB5507 WITH POWER, DATA/TELEPHONE, AND HDMI DEVICE TYPES. COORDINATE WITH VTSV IT FOR HDMI CABLE REQUIREMENTS AND WIRING DIAGRAM. COORDINATE BOX COLOR WITH ARCHITECT.
4. CONNECT RESTROOM EXHAUST FAN TO LIGHTING SWITCH CONTROL. COORDINATE WITH MECH. CONTRACTOR.
5. COORDINATE ALL COUNTERTOP RECPT. LOCATIONS WITH ARCHITECTURAL CASEWORK LAYOUT PRIOR TO INSTALL.
6. FINAL LAYOUT OF POKETHROUGH DEVICES TO BE DETERMINED BY OWNER/ARCHITECT. FIELD COORDINATE.
7. PROVIDE 20A NON-FUSED DISCONNECT SWITCH PER NEC FOR GAS TYPE HOT WATER HEATER.



 ELECTRICAL POWER AND SPECIAL SYSTEMS PLAN: FIRST FLOOR
SCALE: 1/4" = 1'-0"

