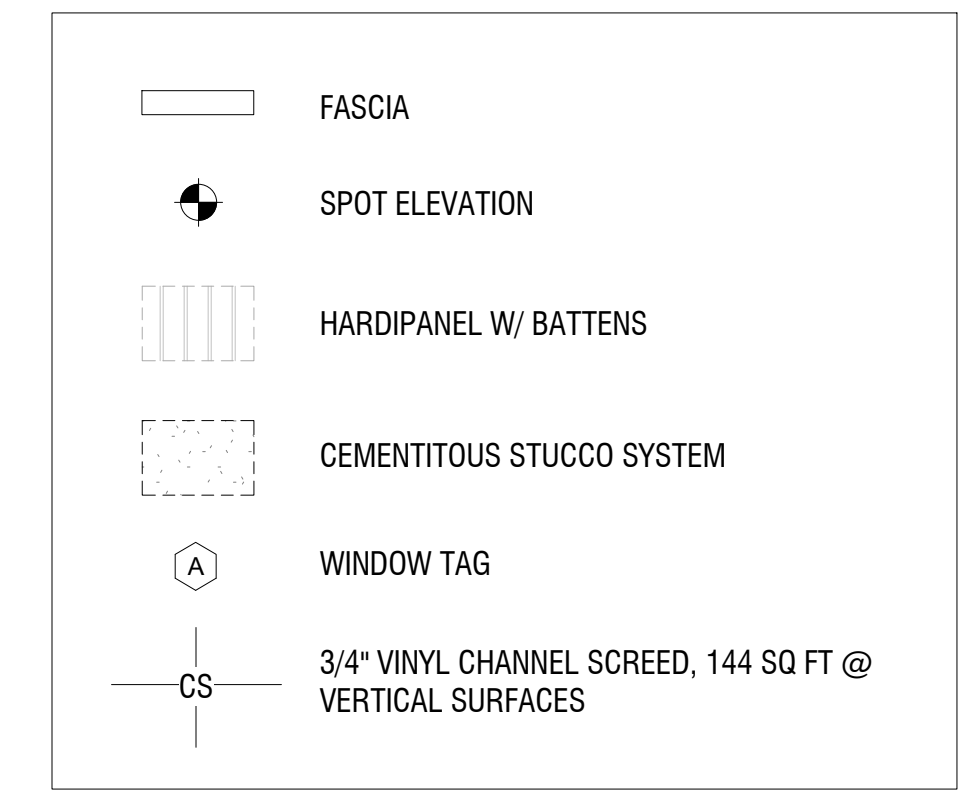


THIS DESIGN IS CONFIDENTIAL AND PROPRIETARY OF LDG, INC. NO REUSE OR ALTERATION IS PERMITTED WITHOUT WRITTEN PERMISSION.

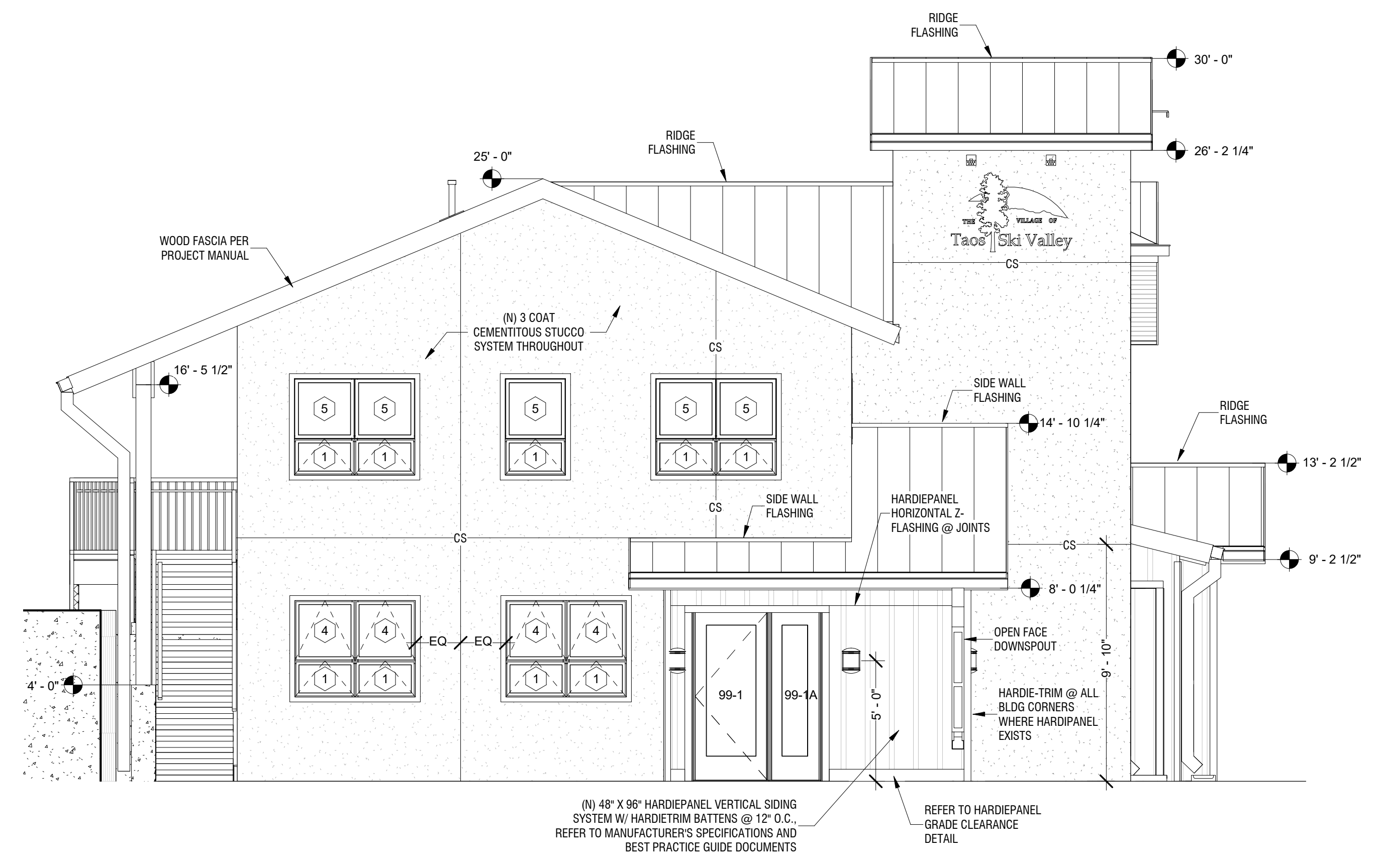
SIDING NOTES:			
CEMENT FIBER SIDING:			
SIDING:	MFG. JAMES HARDIE	TRIM2:	MFG. JAMES HARDIE
	PRODUCT/STYLE HARDIPANEL HZ5		PRODUCT/STYLE HARDITRIM HZ5
	COLOR BOOTHBAY BLUE COLORPLUS		COLOR MONTEREY TAUPE COLORPLUS
	MODEL SELECT-CEDEARMILL		MODEL RUSTIC GRAIN BATTEN BOARDS
	SIZE 4W		SIZE 2.5"
	NOTES		NOTES WINDOW CASING, 1/2 CORNER TRIM
TRIM1:	MFG. JAMES HARDIE	BATTENS:	MFG. JAMES HARDIE
	PRODUCT/STYLE HARDITRIM HZ5		PRODUCT/STYLE HARDITRIM HZ5
	COLOR MONTEREY TAUPE COLORPLUS		COLOR BOOTHBAY BLUE COLORPLUS
	MODEL 4/4 RUSTIC		MODEL RUSTIC GRAIN BATTEN BOARDS
	SIZE 3.5"		SIZE 2.5"
	NOTES 1/2 CORNER TRIM		NOTES PANEL BATTENS



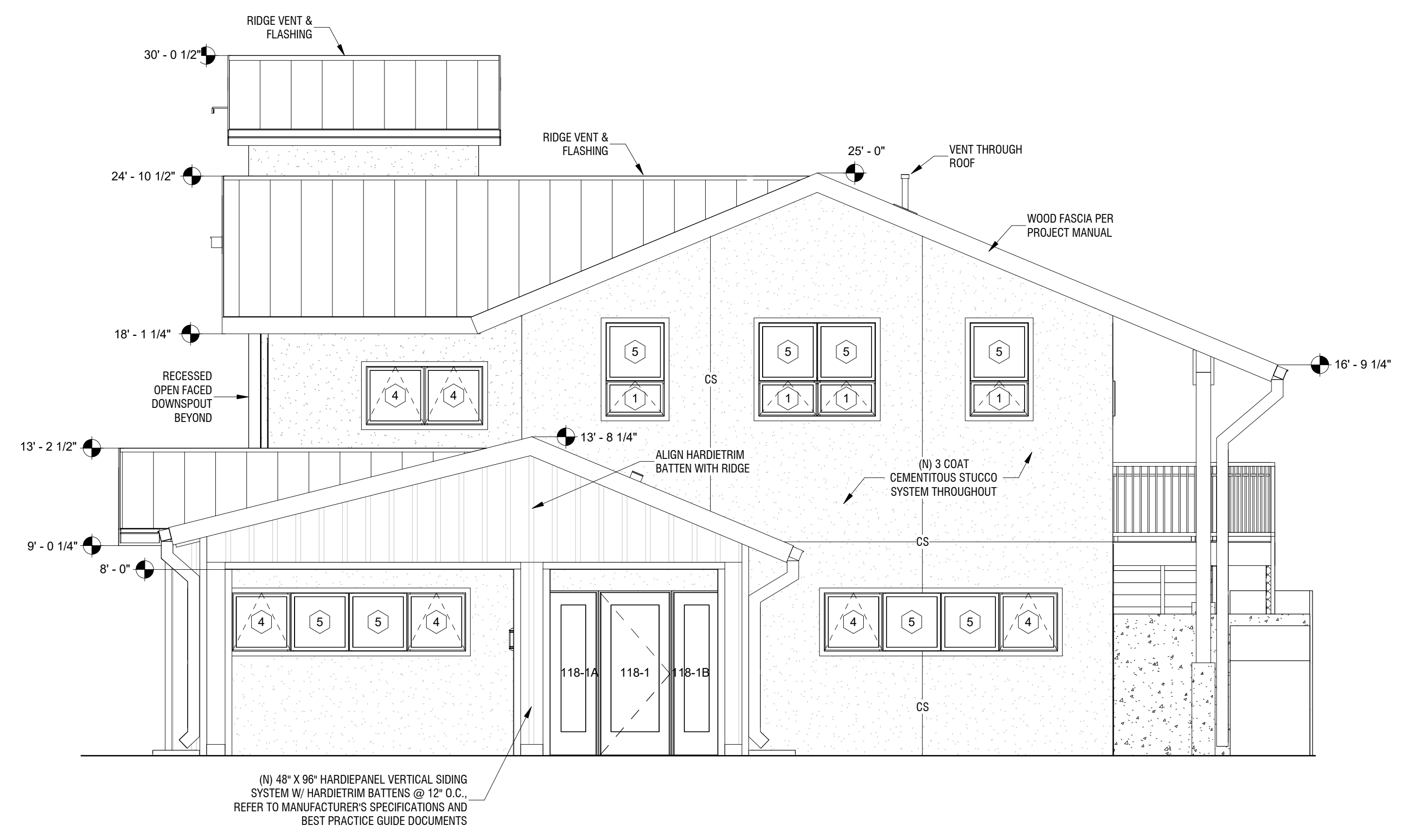
ELEVATION LEGEND
1/8" = 1'-0"



3 STREET VIEW



2 WEST PROPOSED
1/4" = 1'-0"



1 EAST PROPOSED
1/4" = 1'-0"

VTSV ADMINISTRATION BUILDING
CONSTRUCTION DOCUMENTS

1346 NM 150, VILLAGE OF TAOS SKI VALLEY, NM 87525

2:010 ACTIVE PROJECTS/2018-600 VTSV Admin/09 CAD/09/2018-600 - VTSV ADMIN BID SET - JB LOCAL 10.12.18.rvt

PROJ. NO: 2018-600
ISSUE DATE: 10/18/18
ISSUED FOR:

REVISIONS:	NO	DATE	DESCRIPTION

DRAFTED BY: LDG
APPROVED BY: LDG

SCALE: As indicated

PROPOSED ELEVATIONS