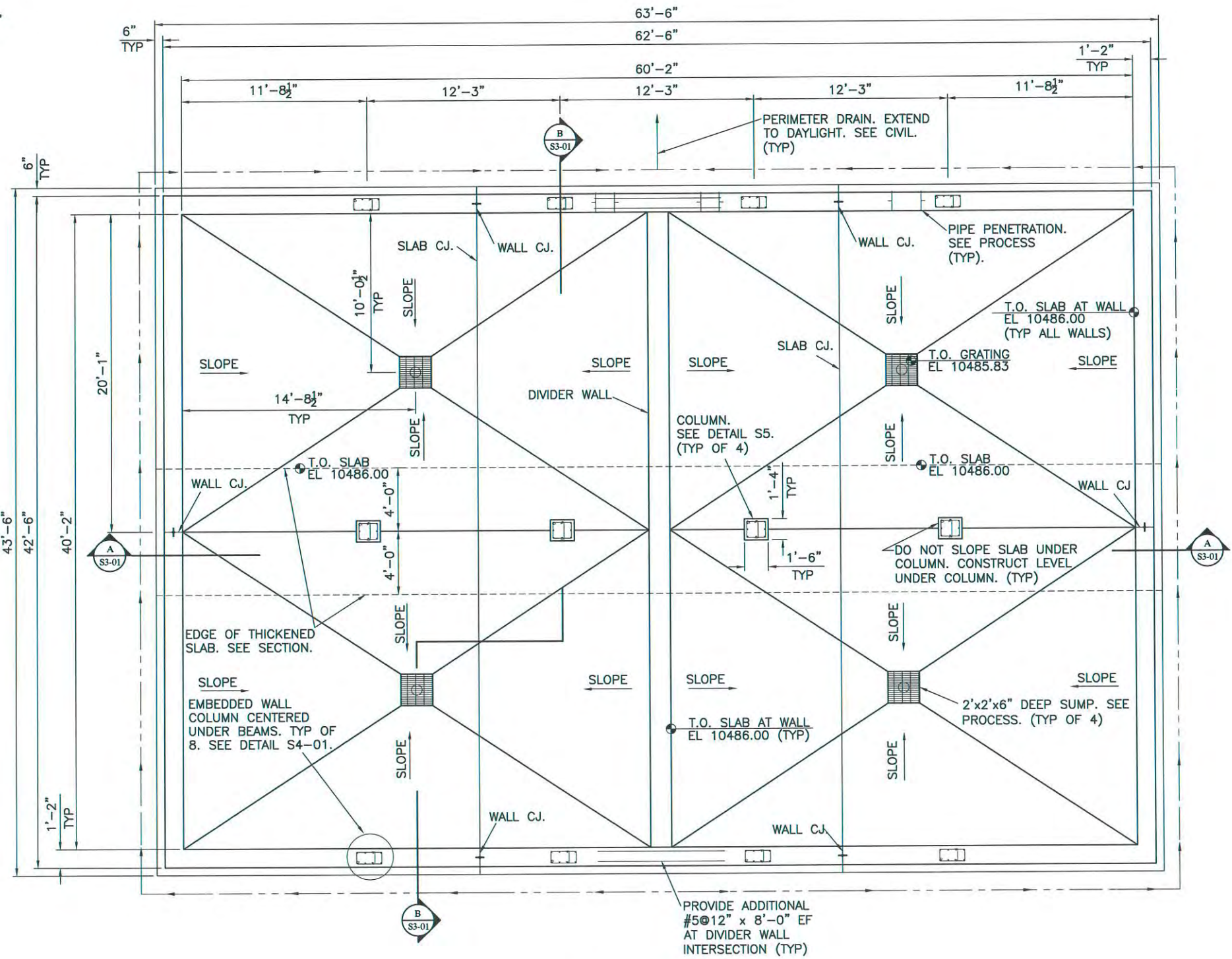




SCALE: 1/8"=1'-0"



FOUNDATION PLAN
SCALE: 1/8"=1'-0"

NOTES:

1. REFER TO THE STRUCTURAL NOTES AND STANDARD DETAILS.
2. REFER TO OTHER DISCIPLINES FOR LOCATIONS OF PIPES, SUPPORTED EQUIPMENT, EMBEDMENTS, WALL AND SLAB OPENINGS, AND OTHER DETAILS.
3. BACKFILL UNIFORMLY AROUND STRUCTURE.
4. DO NOT LEAK TEST OR BACKFILL WALLS BEFORE WALL AND ROOF CONCRETE REACH SPECIFIED 28-DAY COMPRESSIVE STRENGTH UNLESS APPROVED BY ENGINEER.



REV. No.	DATE	DESCRIPTION
-	3/2017	BID SET

VILLAGE OF TAOS SKI VALLEY
WATER SYSTEM IMPROVEMENTS - KACHINA TANK

TANK FOUNDATION PLAN

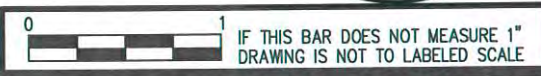
NOTICE TO CONTRACTOR:
PAYMENT MAY TAKE UP TO 45 DAYS AFTER RECEIPT OF AN APPROVABLE PAY APPLICATION.

David W. Marsh
3/17/2017



PROJECT No.:	VTSV-S14-0132
DATE:	3/17/2017
DESIGNED BY:	DWM
DRAWN BY:	DM
CHECKED BY:	DWM

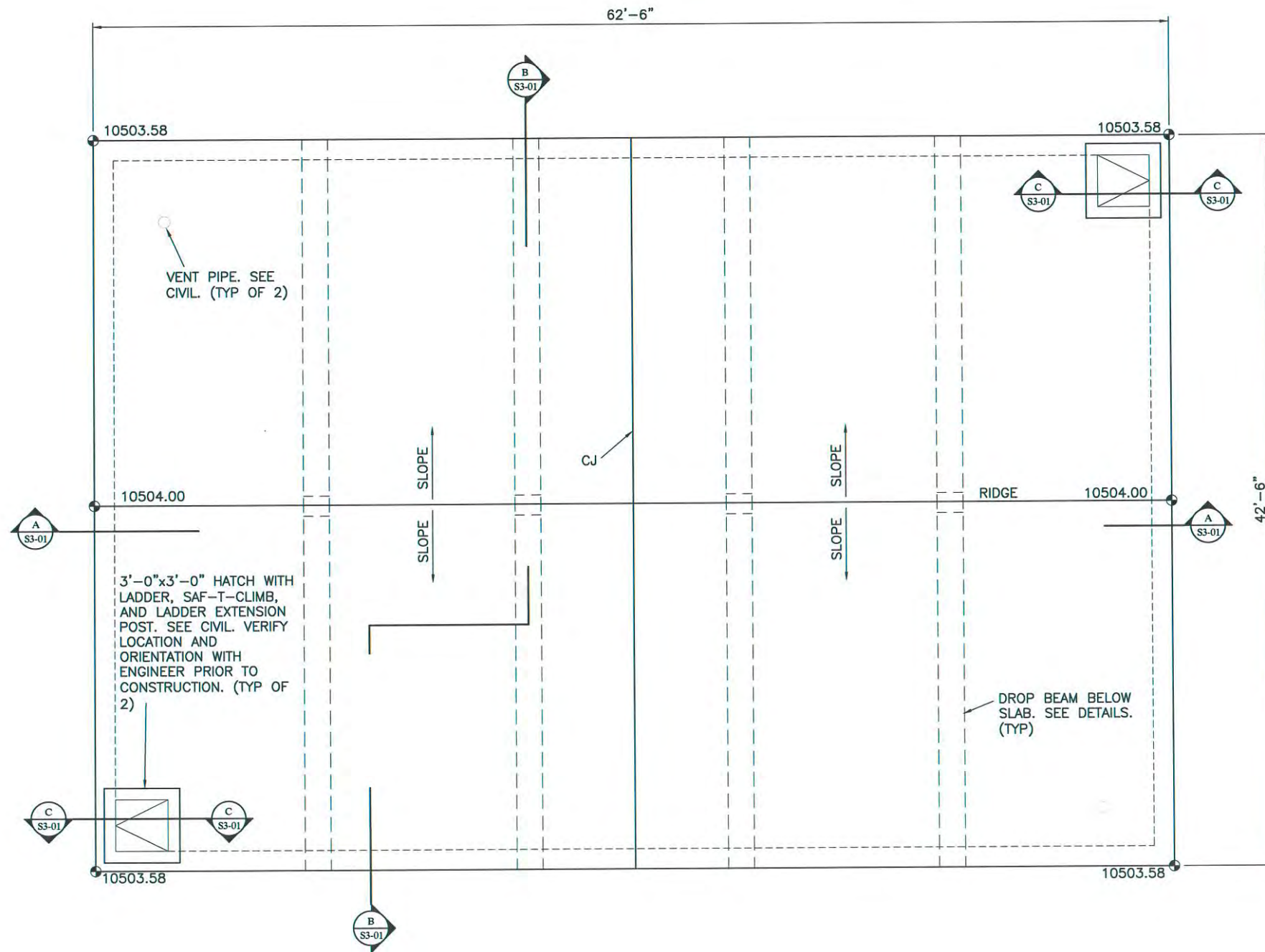
S1-01



IF THIS BAR DOES NOT MEASURE 1' DRAWING IS NOT TO LABELED SCALE



SCALE: 1/8"=1'-0"



ROOF PLAN
SCALE: 1/8"=1'-0"

NOTES:

1. REFER TO THE STRUCTURAL NOTES AND STANDARD DETAILS.
2. REFER TO OTHER DISCIPLINES FOR LOCATIONS OF PIPES, SUPPORTED EQUIPMENT, EMBEDMENTS, WALL AND SLAB OPENINGS, AND OTHER DETAILS.
3. BACKFILL UNIFORMLY AROUND STRUCTURE.
4. DO NOT LEAK TEST OR BACKFILL WALLS BEFORE WALL AND ROOF CONCRETE REACH SPECIFIED 28-DAY COMPRESSIVE STRENGTH UNLESS APPROVED BY ENGINEER.



REV. No.	DATE	DESCRIPTION
-	3/2017	BID SET

VILLAGE OF TAOS SKI VALLEY
WATER SYSTEM IMPROVEMENTS - KACHINA TANK

TANK ROOF PLAN

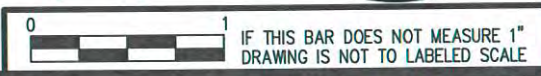
NOTICE TO CONTRACTOR:
PAYMENT MAY TAKE UP TO 45 DAYS AFTER RECEIPT OF AN APPROVABLE PAY APPLICATION.



David W. Marsh
3/17/2017

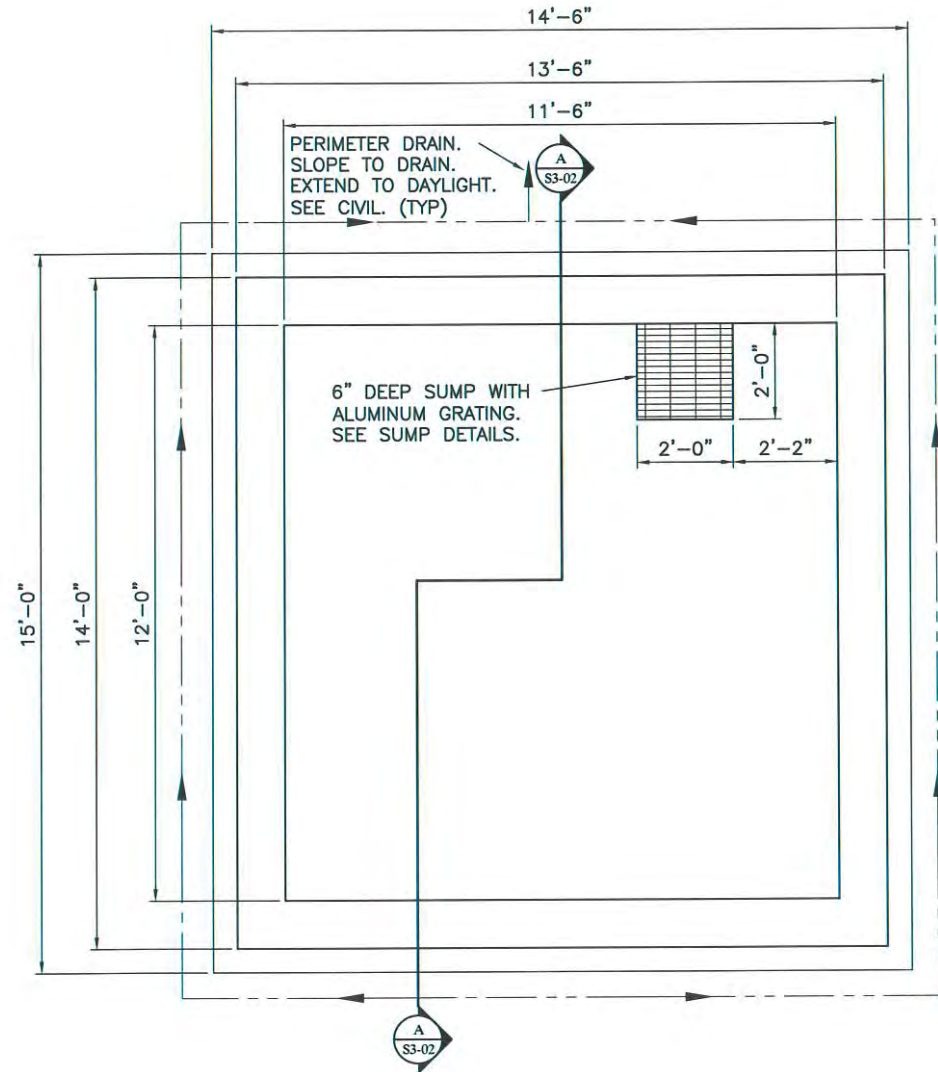
PROJECT No.:	VTSV-S14-0132
DATE:	3/17/2017
DESIGNED BY:	DWM
DRAWN BY:	DM
CHECKED BY:	DWM

S1-02



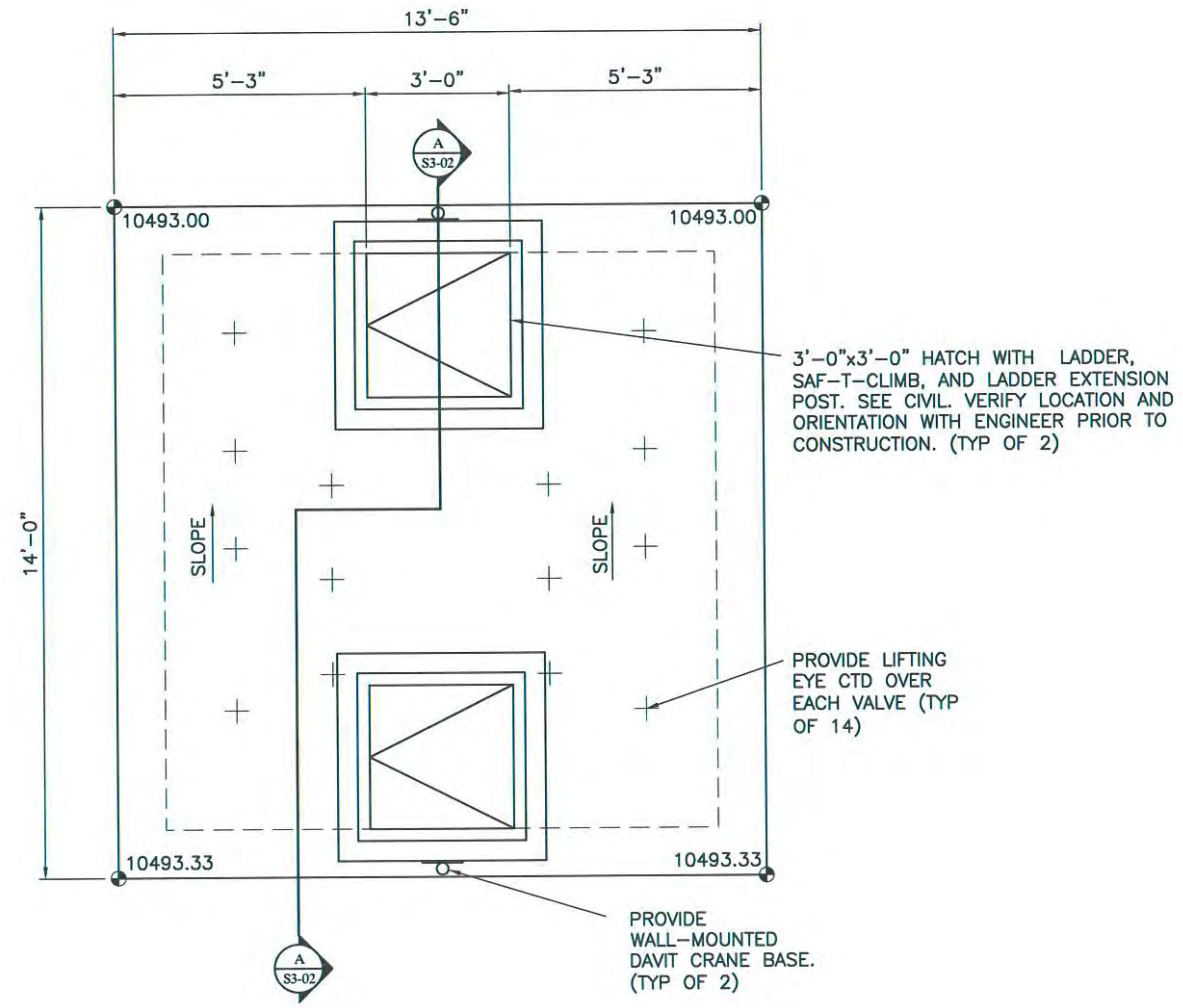


SCALE: 1/4"=1'-0"



FOUNDATION PLAN

SCALE: 1/4"=1'-0"



ROOF PLAN

SCALE: 1/4"=1'-0"

NOTES:

1. REFER TO THE STRUCTURAL NOTES AND STANDARD DETAILS.
2. REFER TO OTHER DISCIPLINES FOR LOCATIONS OF PIPES, SUPPORTED EQUIPMENT, EMBEDMENTS, WALL AND SLAB OPENINGS, AND OTHER DETAILS.
3. BACKFILL UNIFORMLY AROUND STRUCTURE.
4. DO NOT LEAK TEST OR BACKFILL WALLS BEFORE WALL AND ROOF CONCRETE REACH SPECIFIED 28-DAY COMPRESSIVE STRENGTH UNLESS APPROVED BY ENGINEER.



REV. No.	DATE	DESCRIPTION
-	3/2017	BID SET

VILLAGE OF TAOS SKI VALLEY
 WATER SYSTEM IMPROVEMENTS - KACHINA TANK
 VAULT FOUNDATION AND ROOF PLANS

NOTICE TO CONTRACTOR:

PAYMENT MAY TAKE UP TO 45 DAYS AFTER RECEIPT OF AN APPROVABLE PAY APPLICATION.



David W. Marsh
 3/17/2017

PROJECT No.:	VTSV-S14-0132
DATE:	3/17/2017
DESIGNED BY:	DWM
DRAWN BY:	DM
CHECKED BY:	DWM

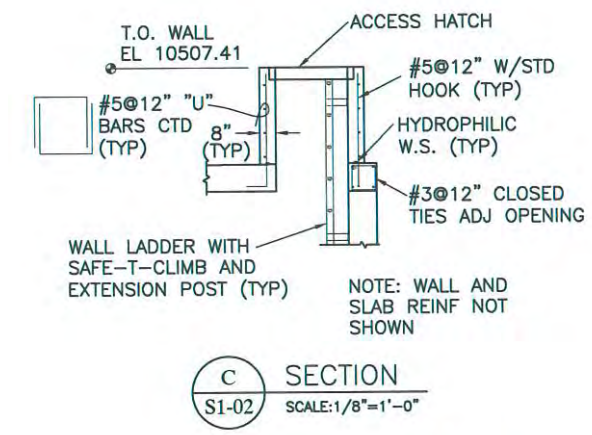
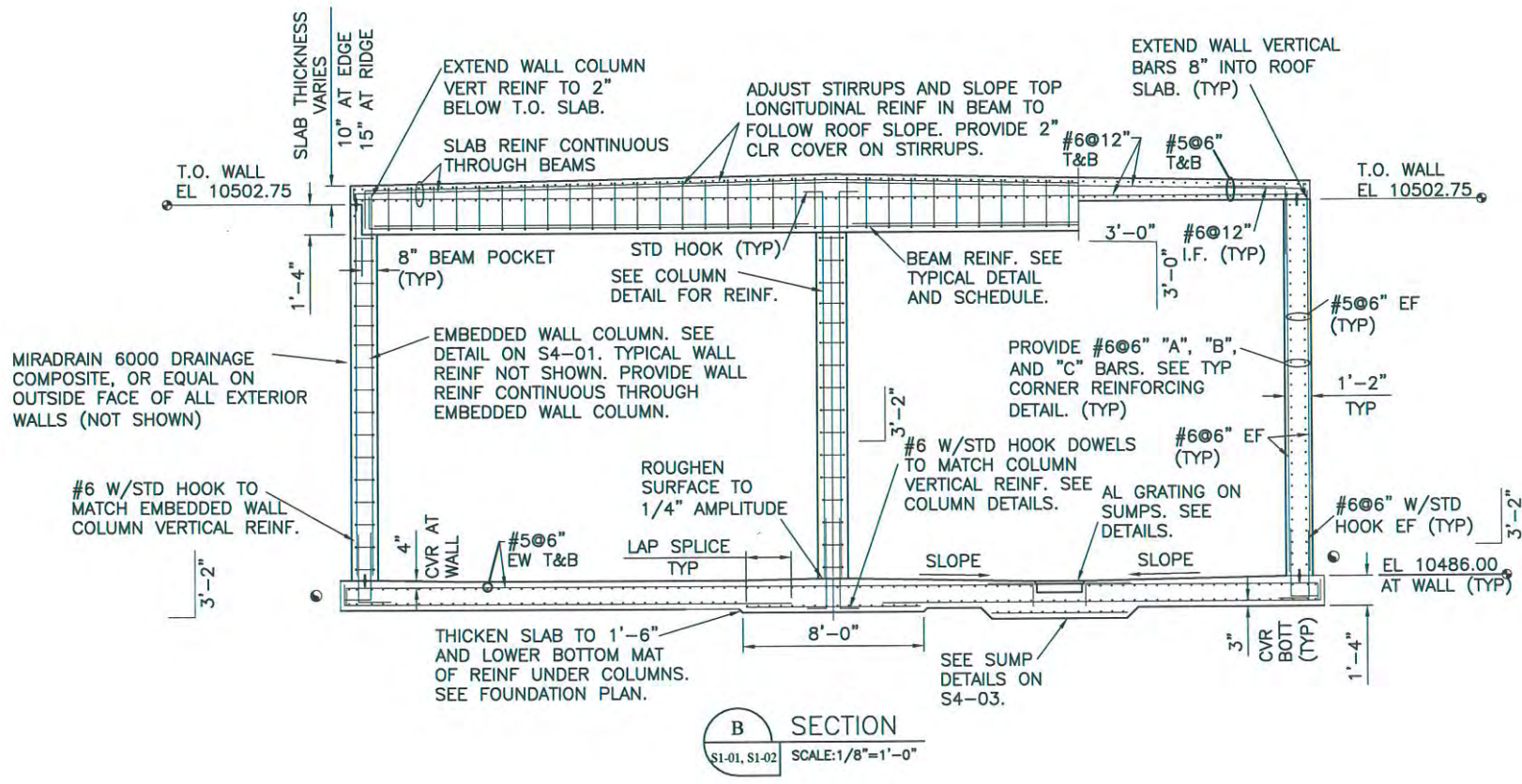
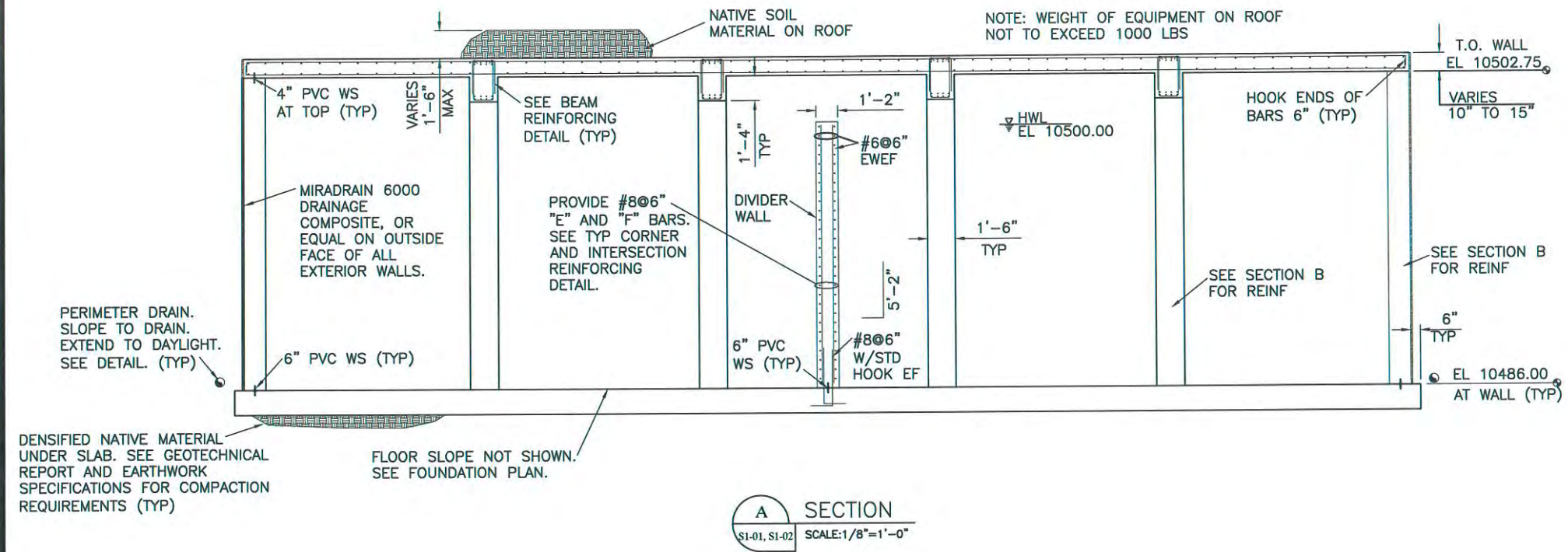
S1-03



IF THIS BAR DOES NOT MEASURE 1' DRAWING IS NOT TO LABELED SCALE

NOTES:

1. REFER TO THE STRUCTURAL NOTES AND STANDARD DETAILS.
2. REFER TO OTHER DISCIPLINES FOR LOCATIONS OF PIPES, SUPPORTED EQUIPMENT, EMBEDMENTS, WALL AND SLAB OPENINGS, AND OTHER DETAILS.
3. BACKFILL UNIFORMLY AROUND STRUCTURE.
4. DO NOT LEAK TEST OR BACKFILL WALLS BEFORE WALL AND ROOF CONCRETE REACH SPECIFIED 28-DAY COMPRESSIVE STRENGTH UNLESS APPROVED BY ENGINEER.



NOTICE TO CONTRACTOR:
PAYMENT MAY TAKE UP TO 45 DAYS AFTER RECEIPT OF AN APPROVABLE PAY APPLICATION.

David W. Marsh
3/17/2017

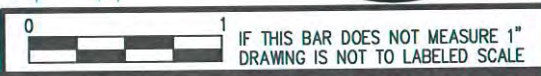


REV. No.	DATE	DESCRIPTION
1	3/2017	BID SET

VILLAGE OF TAOS SKI VALLEY
WATER SYSTEM IMPROVEMENTS - KACHINA TANK
TANK SECTIONS

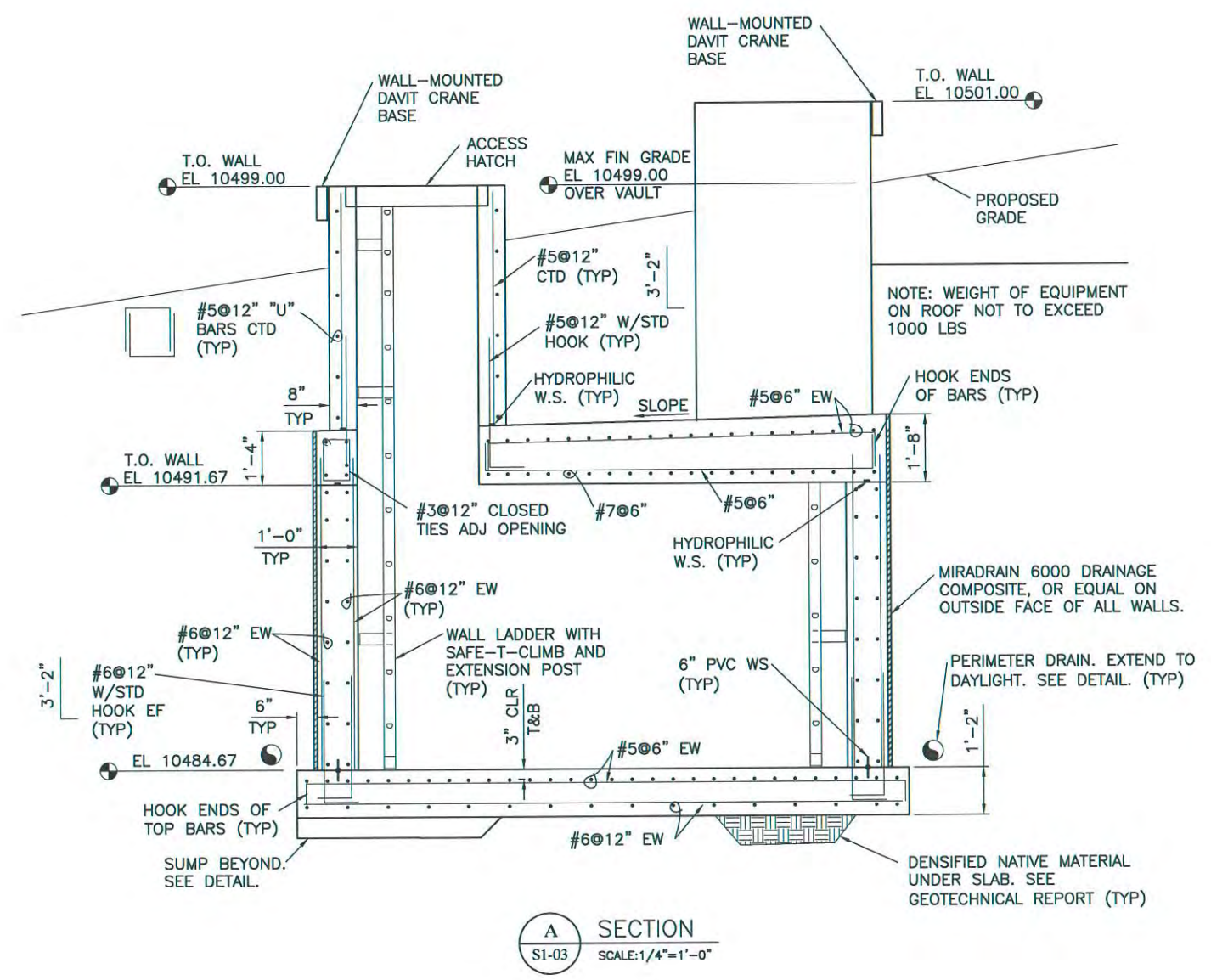
PROJECT No.: VTSY-S14-0132
DATE: 3/17/2017
DESIGNED BY: DWM
DRAWN BY: DM
CHECKED BY: DWM

S3-01



NOTES:

1. REFER TO THE STRUCTURAL NOTES AND STANDARD DETAILS.
2. REFER TO OTHER DISCIPLINES FOR LOCATIONS OF PIPES, SUPPORTED EQUIPMENT, EMBEDMENTS, WALL AND SLAB OPENINGS, AND OTHER DETAILS.
3. BACKFILL UNIFORMLY AROUND STRUCTURE.
4. DO NOT BACKFILL WALLS BEFORE WALL AND ROOF CONCRETE REACH SPECIFIED 28-DAY COMPRESSIVE STRENGTH UNLESS APPROVED BY ENGINEER.



NOTICE TO CONTRACTOR:
PAYMENT MAY TAKE UP TO 45 DAYS AFTER RECEIPT OF AN APPROVABLE PAY APPLICATION.



David W. Marsh
3/17/2017



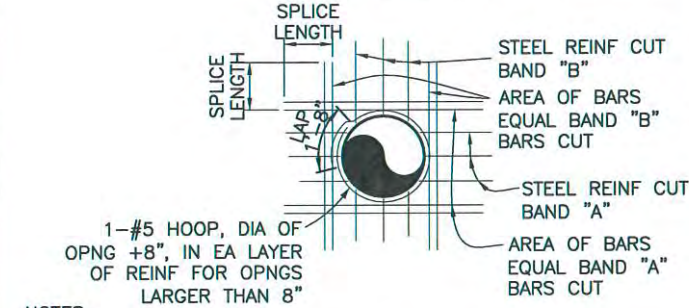
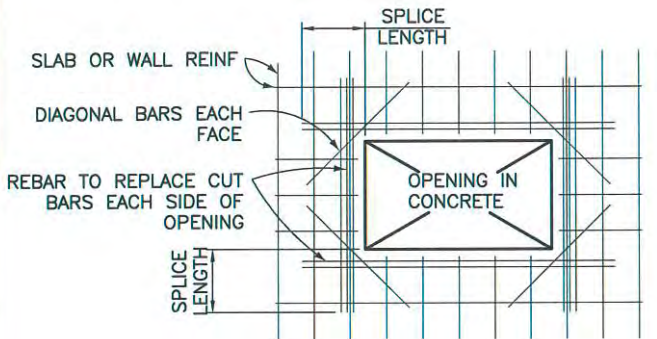
REV. No.	DATE	DESCRIPTION
-	3/2017	BID SET

VILLAGE OF TAOS SKI VALLEY
WATER SYSTEM IMPROVEMENTS - KACHINA TANK

VAULT SECTION

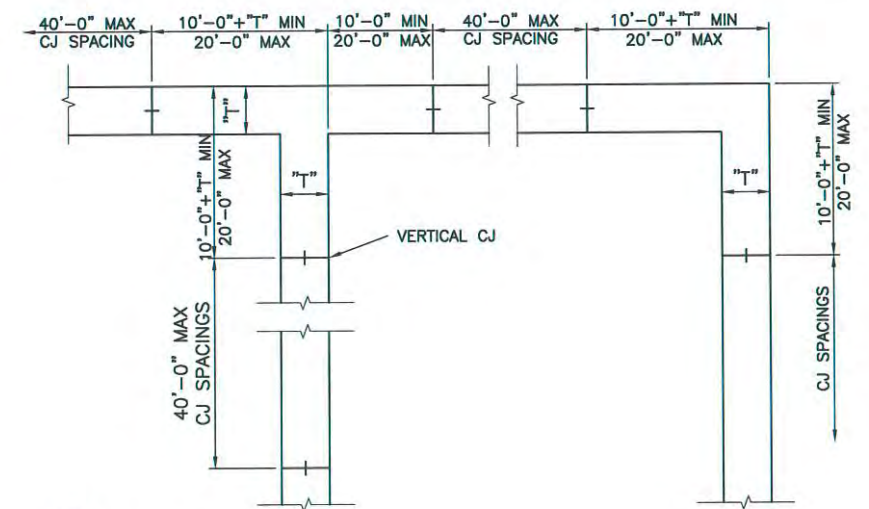
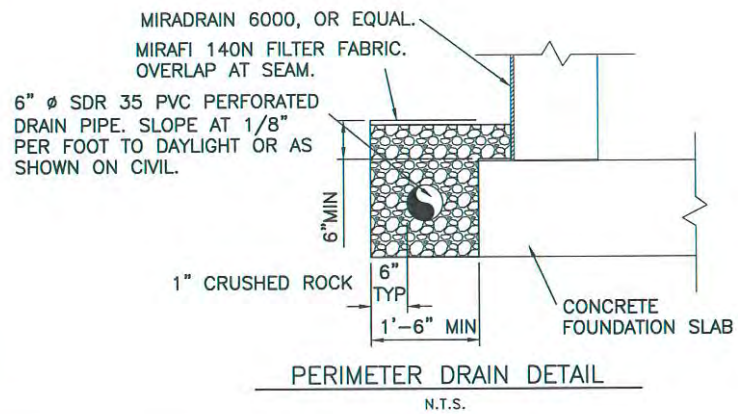
PROJECT No.:	VTSV-S14-0132
DATE:	3/17/2017
DESIGNED BY:	DWM
DRAWN BY:	DM
CHECKED BY:	DWM

S3-02



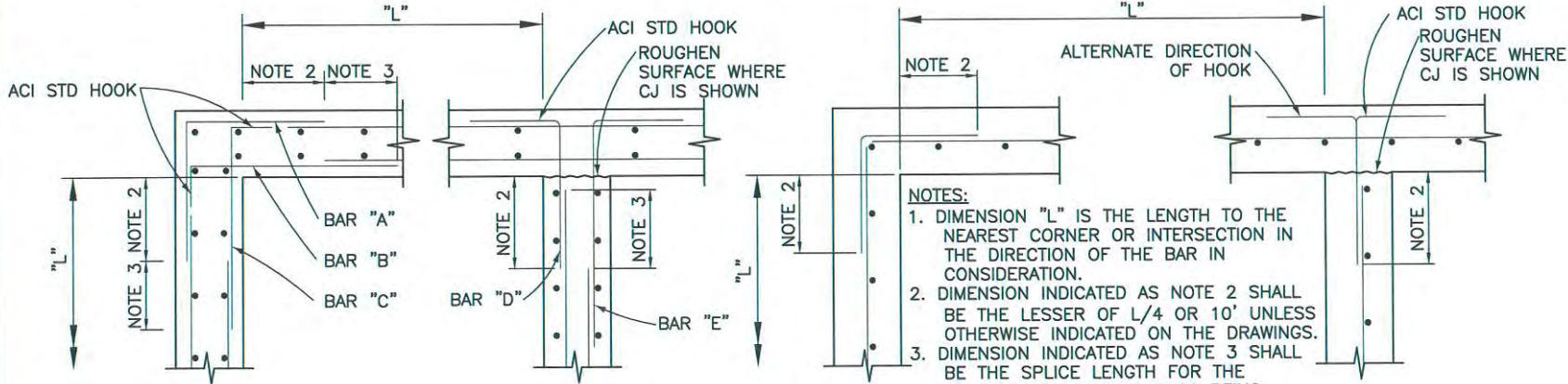
- NOTES:**
1. ALL REBAR CUT BY AN OPENING SHALL BE REPLACED AT ALL SIDES TO PROVIDE THE SAME QUANTITY OF REBAR AS A WALL OR SLAB WITHOUT AN OPENING.
 2. PROVIDE ADDITIONAL CORNER BARS OR SLAB DOWELS TO MATCH REPLACED BARS WHEN OPENINGS ARE WITHIN D/2 OF CORNERS OR SLABS, WHERE D= OPENING DIAMETER OR DIMENSION PARALLEL TO REPLACED BARS BEING CONSIDERED.
 3. PLACE 'DIAGONAL' BARS AROUND THE OPENING AT EACH CORNER USING THE LARGEST SIZE REBAR CUT. LENGTH IS TWICE SPLICE LENGTH.
 4. PROVIDE 1" OR ONE BAR DIAMETER, WHICHEVER IS LARGER, BETWEEN ADJACENT BARS.

WALL & SLAB OPENING DETAIL



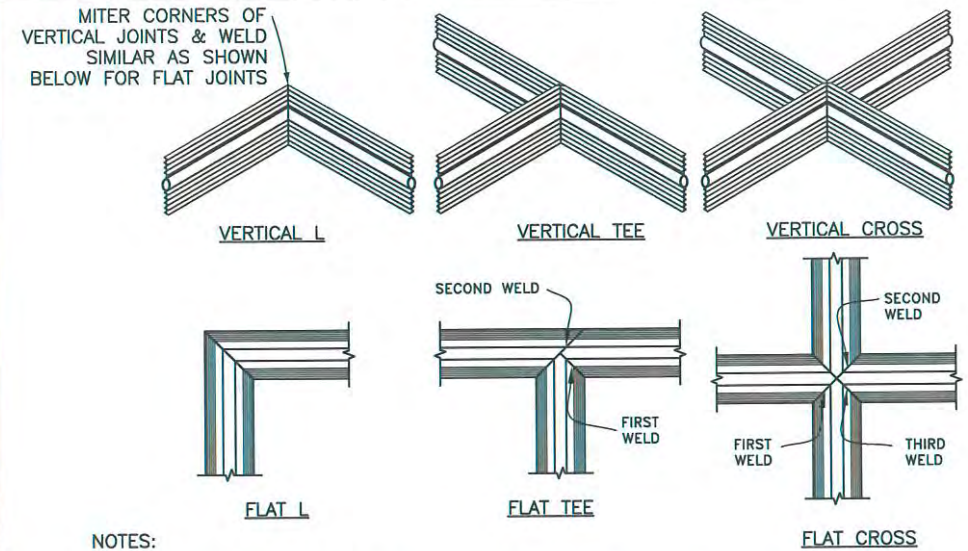
- NOTE:**
1. COORDINATE CONSTRUCTION JOINT LOCATIONS AND TIME BETWEEN CONCRETE POURS AS SPECIFIED IN SECTION 03300.
 2. CONSTRUCTION JOINT SPACING SHOWN IS INTENDED TO BE TYPICAL. SEE STRUCTURAL PLANS FOR ADDITIONAL REQUIREMENTS.
 3. WHERE CONTROL JOINTS ARE SHOWN, CONSTRUCTION JOINT SPACING MAY BE INCREASED AS FOLLOWS:
 - DISTANCE FROM OUTSIDE FACE OF CORNER = 30'
 - TYPICAL SPACING = 50'

WALL CONSTRUCTION JOINT SPACING



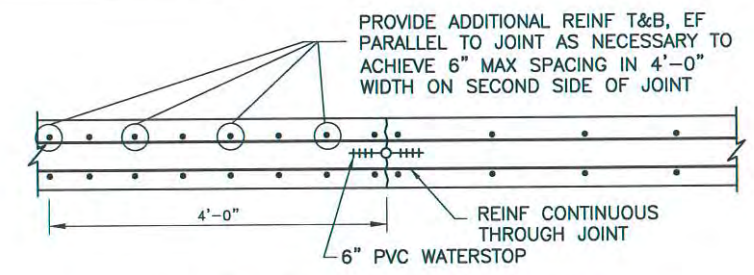
- NOTES:**
1. DIMENSION "L" IS THE LENGTH TO THE NEAREST CORNER OR INTERSECTION IN THE DIRECTION OF THE BAR IN CONSIDERATION.
 2. DIMENSION INDICATED AS NOTE 2 SHALL BE THE LESSER OF L/4 OR 10' UNLESS OTHERWISE INDICATED ON THE DRAWINGS.
 3. DIMENSION INDICATED AS NOTE 3 SHALL BE THE SPLICE LENGTH FOR THE SMALLER OF THE TWO BARS BEING SPLICED UNLESS OTHERWISE INDICATED ON THE DRAWINGS.

TYPICAL CORNER AND INTERSECTION REINFORCING DETAIL

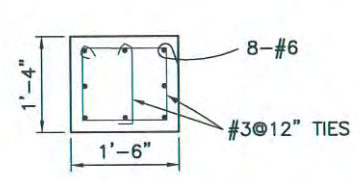


- NOTES:**
1. ALL WELDS SHALL BE PER WATERSTOP MANUFACTURER'S RECOMMENDATIONS.
 2. PLACE CONCRETE IN SHALLOW LIFTS ON BOTH SIDES SIMULTANEOUSLY TO AVOID DEFORMING WATERSTOP.
 3. CONSOLIDATE THOROUGHLY AROUND WATERSTOP TO PREVENT VOIDS.

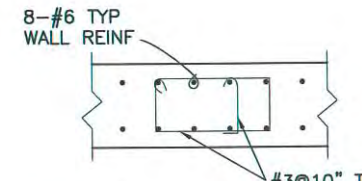
WATERSTOP SPlicing DETAIL



SLAB AND WALL CONSTRUCTION JOINT



COLUMN DETAIL
SCALE: 3/8" = 1'-0"



EMBEDDED WALL COLUMN DETAIL
SCALE: 3/8" = 1'-0"

NOTICE TO CONTRACTOR:
PAYMENT MAY TAKE UP TO 45 DAYS AFTER RECEIPT OF AN APPROVABLE PAY APPLICATION.

David W. Marsh
3/17/2017



REV. No.	DATE	DESCRIPTION
1	3/2017	BID SET

VILLAGE OF TAOS SKI VALLEY
WATER SYSTEM IMPROVEMENTS - KACHINA TANK

STRUCTURAL DETAILS

PROJECT No.:	VTSV-S14-0132
DATE:	3/17/2017
DESIGNED BY:	DWM
DRAWN BY:	DM
CHECKED BY:	DWM

S4-01

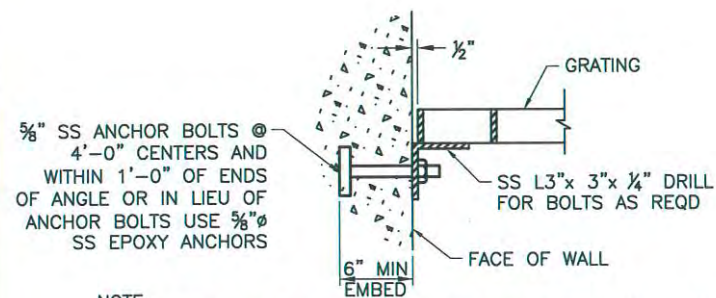
1. EXTEND GRATING CONTINUOUSLY OVER GATE GUIDES AND GATES.
2. NOTCH GRATING SUPPORTS AT GATES AS REQUIRED.
3. WIDTH OF GRATING SECTIONS SHALL NOT EXCEED 3'-0".
4. SHOP DRAWINGS BASED ON FIELD DIMENSIONS SHALL BE SUBMITTED TO THE ENGINEER PRIOR TO FABRICATION.
5. UNLESS NOTED OTHERWISE ON PLANS, GRATING THICKNESS SHALL BE AS TABULATED IN "GRATING THICKNESS TABLE" FOR APPLICABLE TRAFFIC, ALL GRATING SHALL BE OF EQUAL THICKNESS.
6. ALL GRATING TO BE I-BAR TYPE.
7. BAND ALL EDGES WITH $\frac{3}{16}$ x DEPTH OF BEARING BAR.
8. PROVIDE MISCELLANEOUS GRATING FASTENERS AS REQUIRED.
9. TYPE OF MATERIAL USED SHALL BE AS SHOWN ON PLANS OR AS SPECIFIED.
10. THE HORIZONTAL CLEARANCE BETWEEN THE GRATING AND GRATING SUPPORTS SHALL NOT BE LESS THAN $\frac{1}{4}$ " NOR GREATER THAN $\frac{1}{2}$ " AND AS SPECIFIED.
11. ALL GRATING SECTIONS, WHEN IN PLACE, SHALL ALWAYS BE FIRMLY ANCHORED TO THEIR SUPPORTS AS SPECIFIED.
12. MAXIMUM WEIGHT OF GRATING SECTION SHALL BE 150 POUNDS.
13. FASTEN GRATING SUPPORT ANGLE TO GATE FRAMES TO PROVIDE CONTINUOUS SUPPORT.
14. MINIMUM BEARING HORIZONTAL DIMENSION:
 - = 1" FOR GRATING DEPTH $2\frac{1}{4}$ " OR LESS
 - = 2" FOR GRATING DEPTH GREATER THAN $2\frac{1}{4}$ "

FOOT TRAFFIC GRATING THICKNESS TABLE	
MAXIMUM SPAN	ALUMINUM (IN)
3'-6"	1 $\frac{1}{4}$ "
4'-0"	1 $\frac{1}{2}$ "
4'-6"	1 $\frac{3}{4}$ "
5'-0"	1 $\frac{3}{4}$ "
5'-6"	2"
6'-0"	2 $\frac{1}{4}$ "
6'-6"	2 $\frac{1}{4}$ "
7'-0"	2 $\frac{1}{2}$ "

LIGHT VEHICULAR TRAFFIC (WHEEL LOAD=2000 POUNDS OR LESS)		
MAXIMUM SPAN	STEEL (IN)	ALUMINUM (IN)
1'-0"	1 $\frac{3}{4}$ " x $\frac{3}{16}$ "	1 $\frac{3}{4}$ "
1'-6"	1 $\frac{3}{4}$ " x $\frac{3}{16}$ "	1 $\frac{3}{4}$ "
2'-0"	2" x $\frac{3}{16}$ "	2"
2'-6"	2 $\frac{1}{4}$ " x $\frac{3}{16}$ "	2 $\frac{1}{4}$ "
3'-0"	2 $\frac{1}{2}$ " x $\frac{3}{16}$ "	2 $\frac{1}{2}$ "
4'-0"	2 $\frac{1}{2}$ " x $\frac{1}{4}$ "	DO NOT USE ALUMINUM GRATING
5'-0"	2 $\frac{1}{2}$ " x $\frac{3}{8}$ "	
6'-0"	2 $\frac{1}{2}$ " x $\frac{3}{8}$ "	
7'-0"	3" x $\frac{3}{8}$ "	

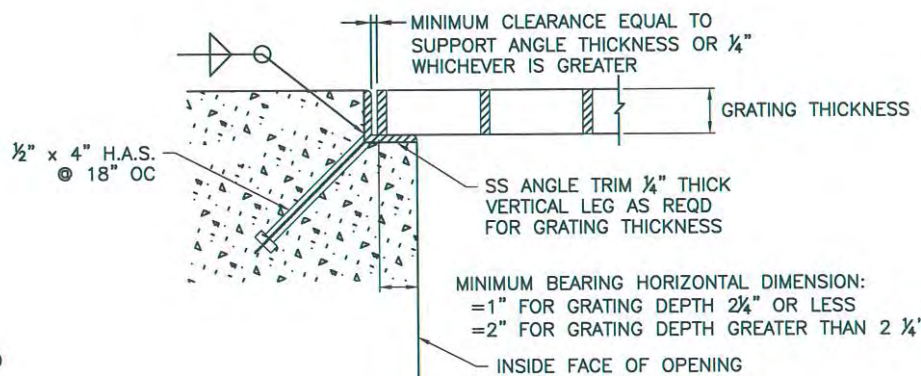
NOTE: STEEL GRATING BEARING BARS FOR VEHICULAR TRAFFIC SHALL BE SPACED AT $1\frac{1}{8}$ " OC; ALUMINUM GRATING BEARING BARS FOR VEHICULAR TRAFFIC SHALL BE SPACED AT $1\frac{3}{16}$ " OC.

GRATING BEAM NOTES

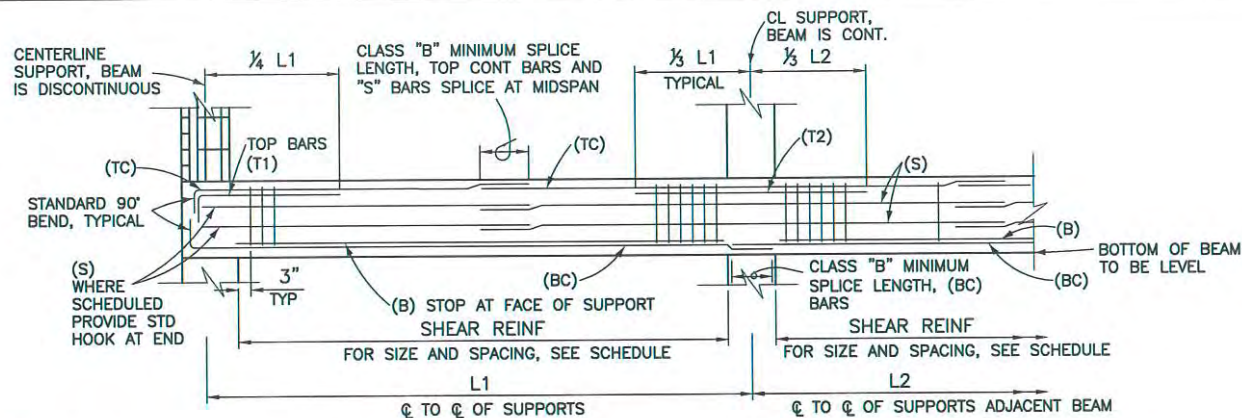


NOTE: TO ONLY BE USED AT WALL EDGE WHERE NO EMBED ANGLE CAN BE PROVIDED AND ON GATE FRAMES TO PROVIDE CONTINUOUS SUPPORT.

GRATING EDGE SUPPORT DETAILS
N.T.S.

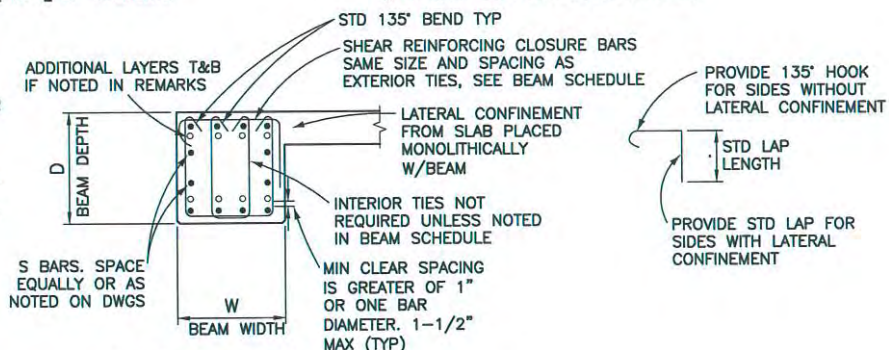


NOTE: PROVIDE FIBERGLASS EZ ANGLE EMBEDDED FRP BEARING ANGLE FOR FRP GRATING, OR EQUAL.



NOTES:

1. REFER TO BEAM REINFORCING DETAIL THIS SHEET.
2. PROVIDE MINIMUM 1-#5x CONT AT EACH CORNER OF ALL TIES, LAP SPLICE WITH LONGITUDINAL REINF.
3. "-" BARS OF THIS DESIGNATION NOT REQUIRED.
4. BEAM DEPTH VARIES WITH ROOF SLOPE. PROVIDE 3" CLR COVER ON TOP AND BOTTOM LONGITUDINAL REINF. ADJUST STIRRUP HEIGHT ALONG BEAM LENGTH AS REQUIRED.
5. PLACE T1 AND T2 BARS IN 2ND LAYER FROM TOP.
6. PLACE TC BARS IN TOP LAYER.
7. PLACE BC BARS IN BOTTOM LAYER.
8. PLACE 2 B BARS IN BOTTOM LAYER AND 2 B BARS IN 2ND LAYER FROM BOTTOM.



TYPICAL SECTION

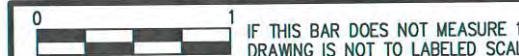
BEAM REINFORCING SCHEDULE

BEAM (SEE PLAN)	SIZE			TOP REINF.			BOTTOM REINF.			SIDE REINF.		SHEAR REINF.		CLASS B SPLICE		REMARKS
	W	D	VARIABLES	T1	T2	TC	B	BC	S	SIZE	SPACING	TOP	BOTTOM			
BM-1	18"	VARIABLES	-	-	-	8-#9	4-#9	4-#9	2-#6	#5	12" *	80"	62"	TC BARS IN 2 LAYERS		

BEAM REINFORCING DETAIL

NOTICE TO CONTRACTOR:
PAYMENT MAY TAKE UP TO 45 DAYS AFTER RECEIPT OF AN APPROVABLE PAY APPLICATION.

David W. Marsh
3/17/2017



IF THIS BAR DOES NOT MEASURE 1" DRAWING IS NOT TO LABELLED SCALE

REV. No.	DATE	DESCRIPTION
-	3/2017	BID SET

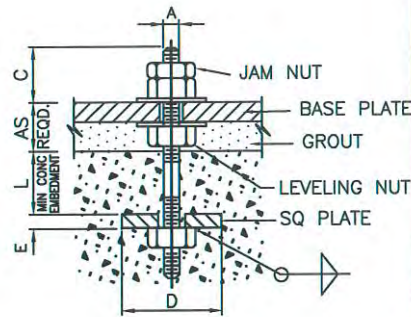
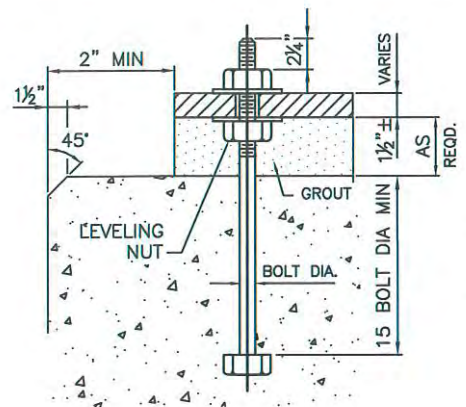
VILLAGE OF TAOS SKI VALLEY
WATER SYSTEM IMPROVEMENTS - KACHINA TANK

STRUCTURAL DETAILS

PROJECT No.:	VTSV-S14-1321
DATE:	3/17/2017
DESIGNED BY:	DWM
DRAWN BY:	DM
CHECKED BY:	DWM

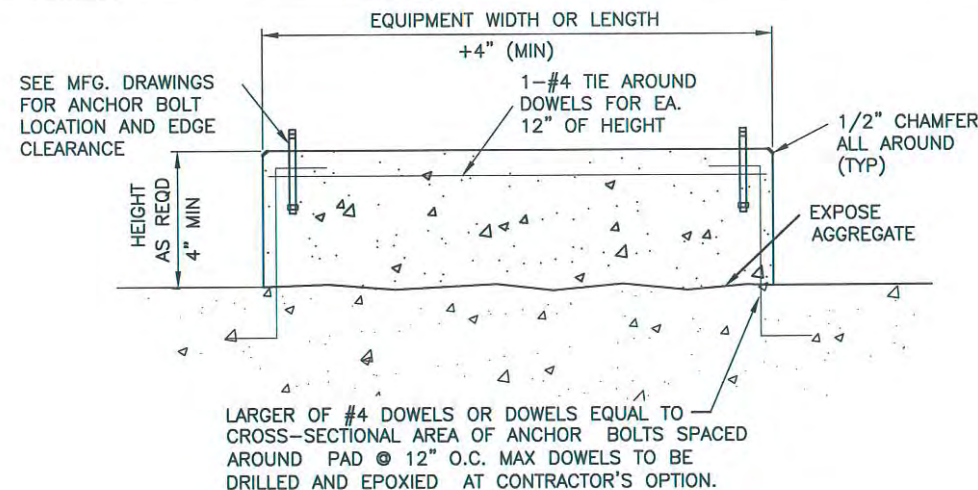
S4-02





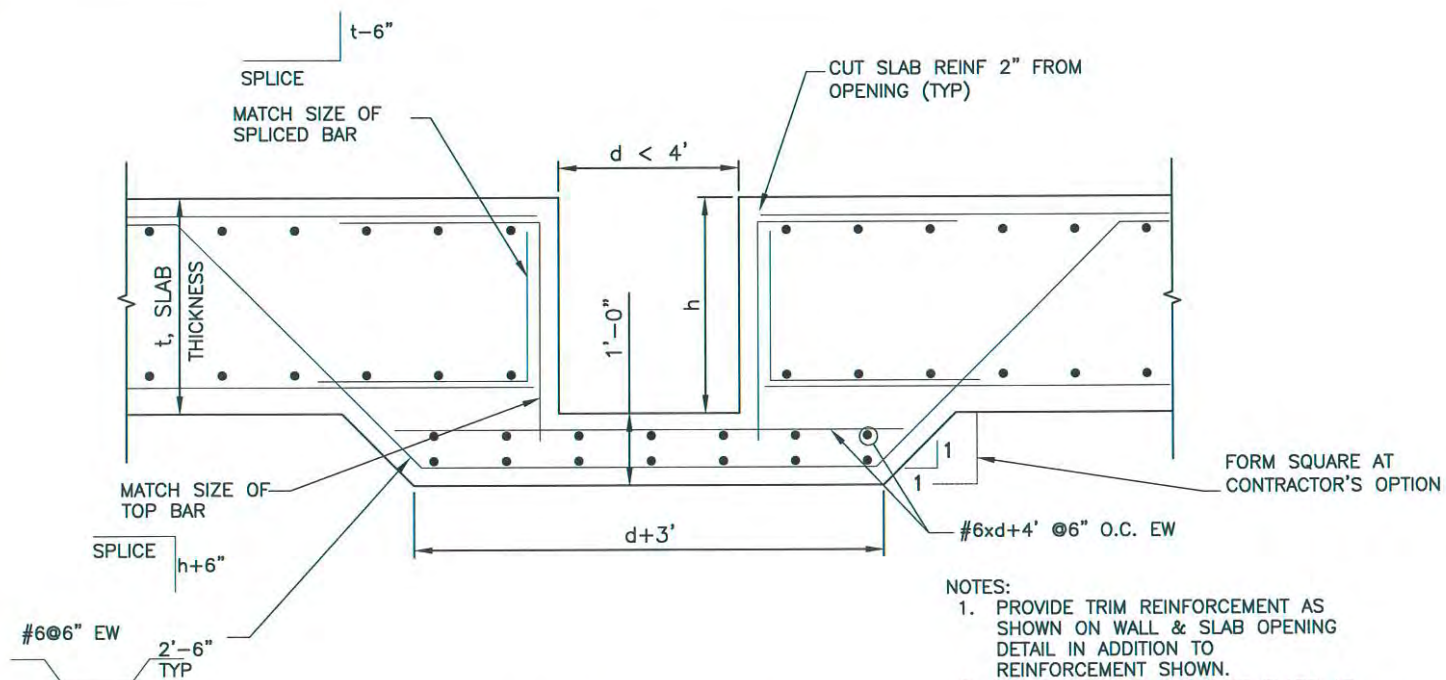
A	C	D	E	L
3/4"	1 3/4"	3"	3/8"	6"
7/8"	2"	3"	1/2"	8"
1"	2 1/4"	4"	1/2"	8"
1 1/4"	2 3/4"	4"	1/2"	10"
1 1/2"	3"	5"	3/4"	12"
1 3/4"	3 1/2"	6"	3/4"	15"
2"	4 1/4"	7"	7/8"	17"
2 1/4"	4 1/2"	8"	1"	19"
2 1/2"	5"	9"	1"	21"

ANCHOR BOLT DETAILS
N.T.S.



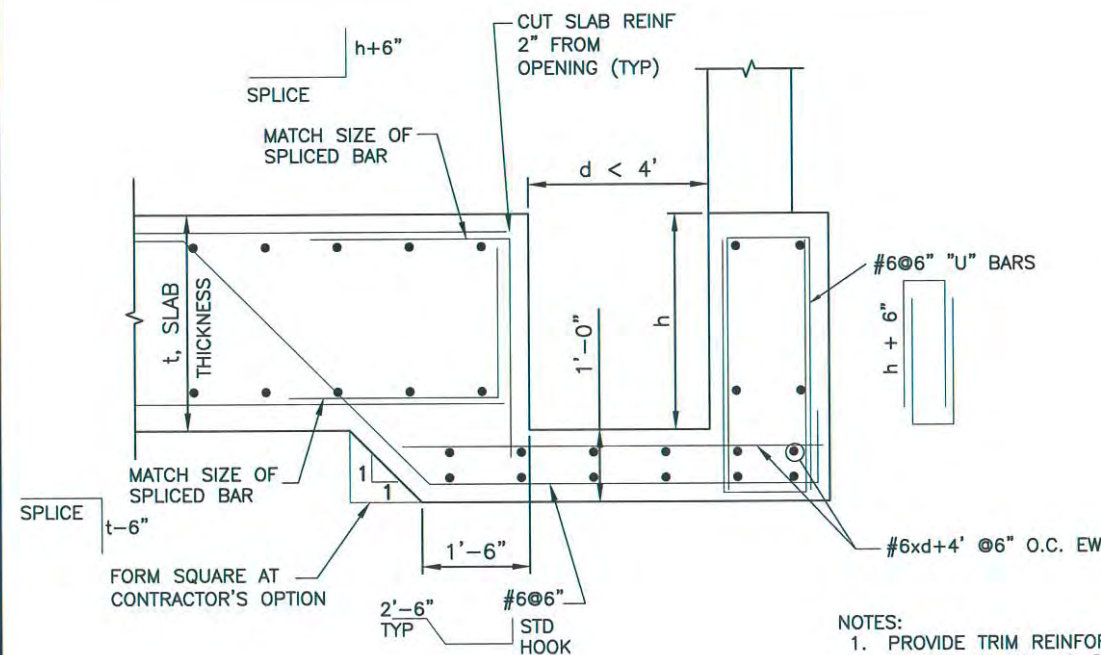
LARGER OF #4 DOWELS OR DOWELS EQUAL TO CROSS-SECTIONAL AREA OF ANCHOR BOLTS SPACED AROUND PAD @ 12" O.C. MAX DOWELS TO BE DRILLED AND EPOXIED AT CONTRACTOR'S OPTION.

EQUIPMENT PAD DETAIL
N.T.S.



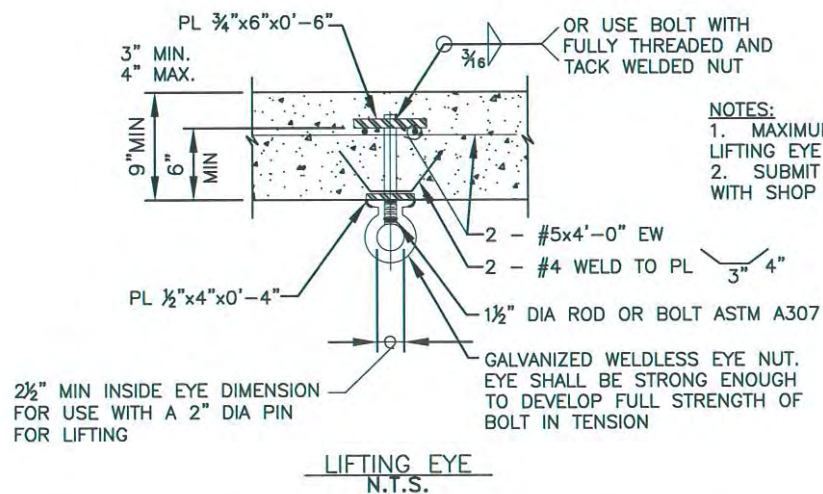
- NOTES:
1. PROVIDE TRIM REINFORCEMENT AS SHOWN ON WALL & SLAB OPENING DETAIL IN ADDITION TO REINFORCEMENT SHOWN.
 2. HOOK BARS AT EDGES OF SLABS AS REQUIRED.
 3. d IS SUMP DIAMETER OR DIMENSION IN DIRECTION BEING CONSIDERED.

SUMP REINFORCING DETAIL
N.T.S.



- NOTES:
1. PROVIDE TRIM REINFORCEMENT AS SHOWN ON WALL & SLAB OPENING DETAIL IN ADDITION TO REINFORCEMENT SHOWN.
 2. HOOK BARS AT EDGES OF SLABS AS REQUIRED.
 3. d IS SUMP DIAMETER OR DIMENSION IN DIRECTION BEING CONSIDERED.

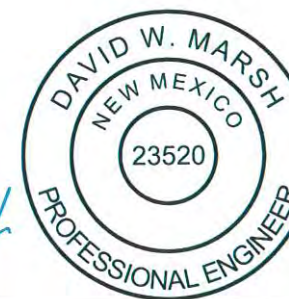
SUMP REINFORCING AT EDGE OF SLAB DETAIL
N.T.S.



- NOTES:
1. MAXIMUM LOAD RATING FOR LIFTING EYE = 2000 LBS.
 2. SUBMIT DATA ON EYE BOLT WITH SHOP DRAWINGS.

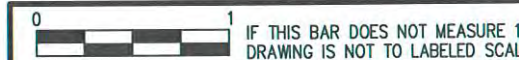
LIFTING EYE
N.T.S.

NOTICE TO CONTRACTOR:
PAYMENT MAY TAKE UP TO 45 DAYS AFTER RECEIPT OF AN APPROVABLE PAY APPLICATION.



David W. Marsh
3/17/2017

Copyright: FEI Engineers Inc.



IF THIS BAR DOES NOT MEASURE 1\"/>

REV. No.	DATE	DESCRIPTION
-	3/2017	BID SET

VILLAGE OF TAOS SKI VALLEY
WATER SYSTEM IMPROVEMENTS - KACHINA TANK

STRUCTURAL DETAILS

PROJECT No.:	VTSV-S14-1321
DATE:	3/17/2017
DESIGNED BY:	DWM
DRAWN BY:	DM
CHECKED BY:	DWM

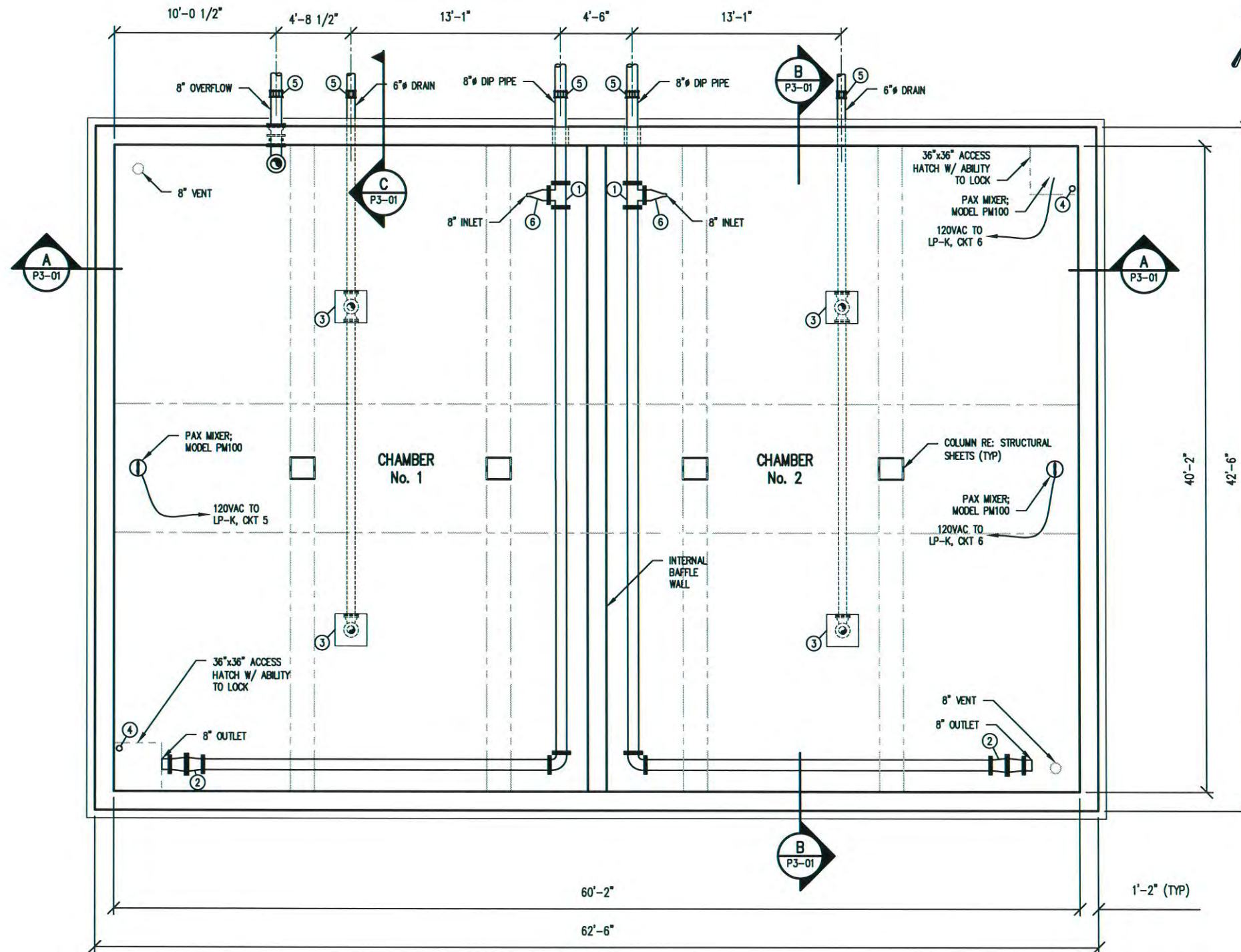
S4-03



LOCATION: W:\VTSV-S14-0132 - KACHINA TANK\PI-01.dwg PLOTTED: 3/21/2017 12:05 PM BY: Keith P. Rinck

NOTICE TO CONTRACTOR:
 PAYMENT MAY TAKE UP TO 45 DAYS AFTER RECEIPT OF AN APPROVABLE PAY APPLICATION.

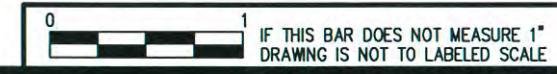
- EQUIPMENT NOTES:**
- ① 8" TEE
 - ② 8" OUTLET CHECK VALVE
 - ③ 24"x24"x6" DEEP SUMP
 - ④ KPSI 750 LEVEL TRANSDUCER W/ CABLE HANGER 12-90-0931
 - ⑤ DIRECT BURY DRESSER COUPLING
 - ⑥ 8" INLET CHECK VALVE



TANK PLAN
 1/8"=1'-0"



Copyright: FEI Engineers Inc.



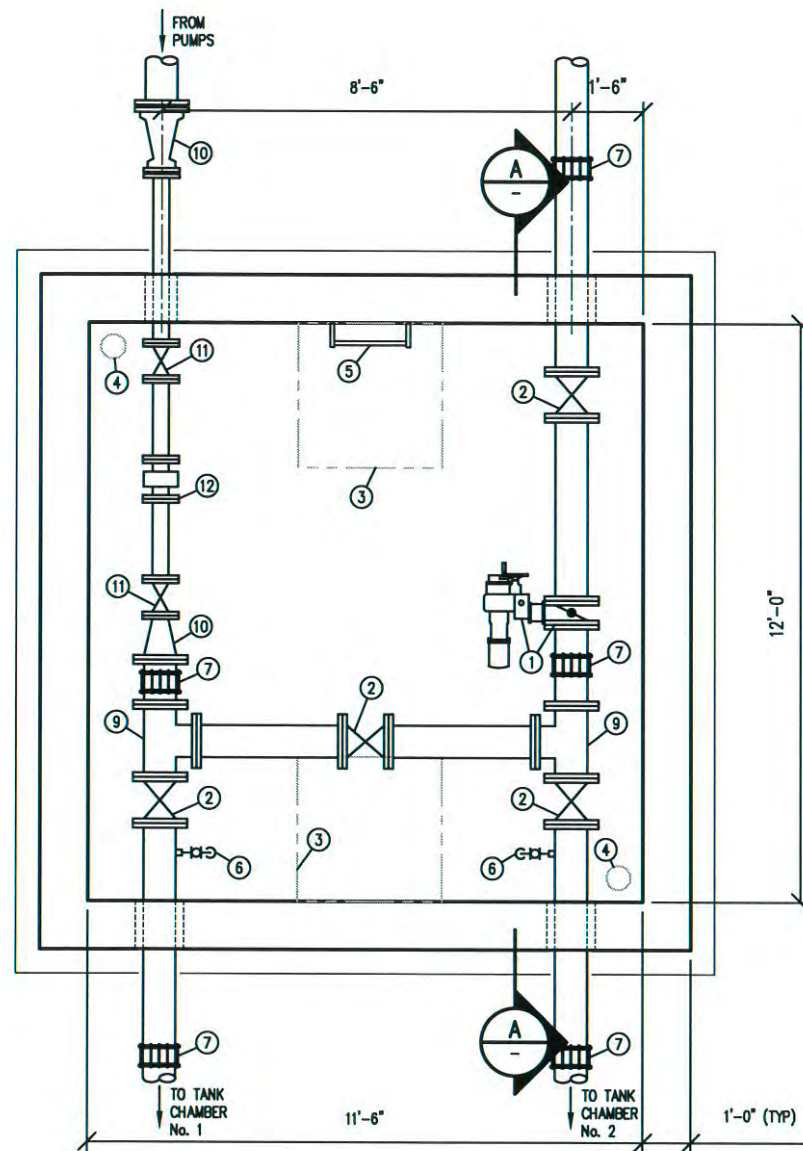
REV. No.	DATE	DESCRIPTION
-	3/2017	BID SET

VILLAGE OF TAOS SKI VALLEY
 KACHINA WATER STORAGE TANK PROJECT
WATER STORAGE TANK PLAN

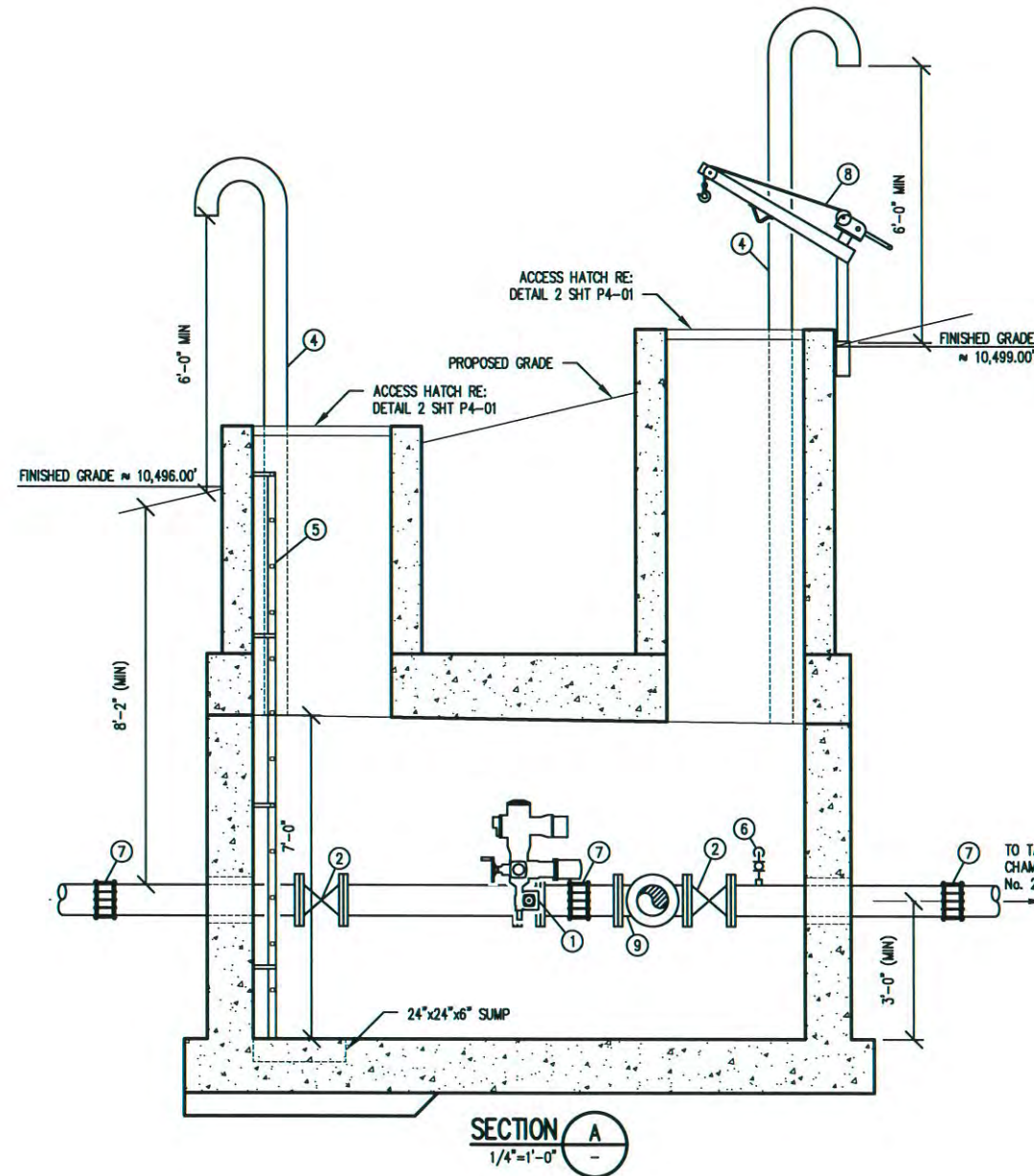
PROJECT No.: VTSV-S14-0132
 DATE: 3/17/2017
 DESIGNED BY: KAF
 DRAWN BY: KPR
 CHECKED BY: POB

P1-01

NOTICE TO CONTRACTOR:
 PAYMENT MAY TAKE UP TO 45 DAYS AFTER RECEIPT OF AN APPROVABLE PAY APPLICATION.



VALVE VAULT PLAN
 1/4"=1'-0"



SECTION A
 1/4"=1'-0"

EQUIPMENT NOTES:

- ① 8" BUTTERFLY VALVE W/ ELECTRIC ACTUATOR
- ② 8" GATE VALVE OS&Y
- ③ 36"x36" ACCESS HATCH W/ ABILITY TO LOCK
- ④ 6" VENT RE: DETAIL 8 SHEET C4-01
- ⑤ LADDER W/ FALL RESTRAINT; OKEEFE MODEL 501
- ⑥ SAMPLE TAP RE: DETAIL 3 SHEET P4-01
- ⑦ DRESSER COUPLING
- ⑧ PROVIDE PORTABLE DAVIT CRANE
- ⑨ 8"x8"x8" TEE
- ⑩ 8"x4" REDUCER
- ⑪ 4" OS&Y GATE VALVE
- ⑫ 4" ELECTROMAGNETIC FLOW METER McROMETER 4" ULTRA MAG; PROVIDE MIN 5 PIPE DIAMETER OF STRAIGHT PIPE UPSTREAM AND 5 PIPE DIAMETER OF STRAIGHT PIPE DOWN STREAM OF METER.

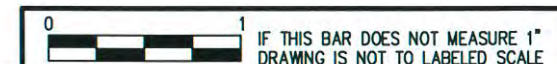
REV. No.	DATE	DESCRIPTION
-	3/2017	BID SET

VILLAGE OF TAOS SKI VALLEY
 KACHINA WATER STORAGE TANK PROJECT

VALVE VAULT PLAN & SECTION

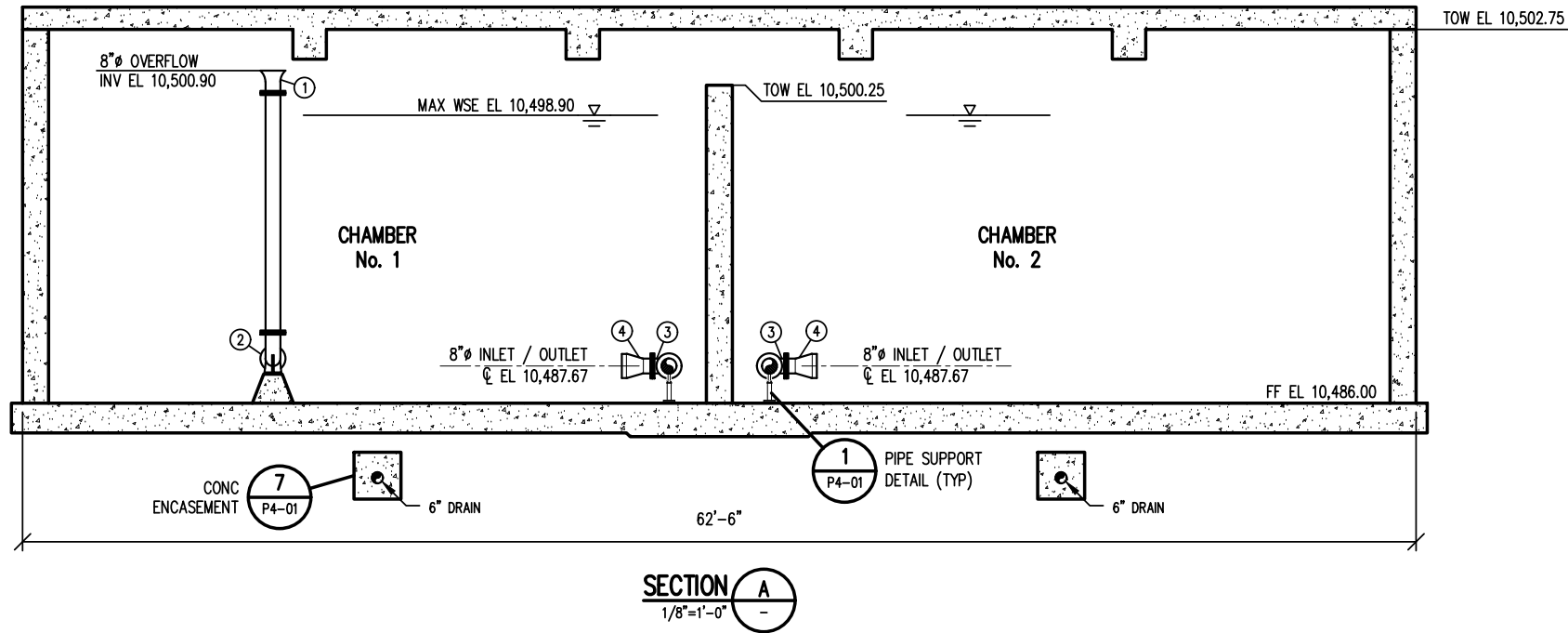


PROJECT No.:	VTSV-S14-0132
DATE:	3/17/2017
DESIGNED BY:	KAF
DRAWN BY:	KPR
CHECKED BY:	POB



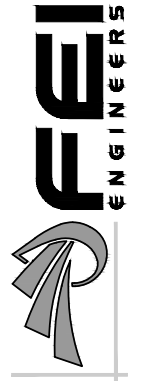
P1-02

LOCATION: W:\VTSV-S14-0132 - KACHINA TANK\3-01.dwg PLOTTED: 3/21/2017 12:05 PM BY: Keith P. Rimdt

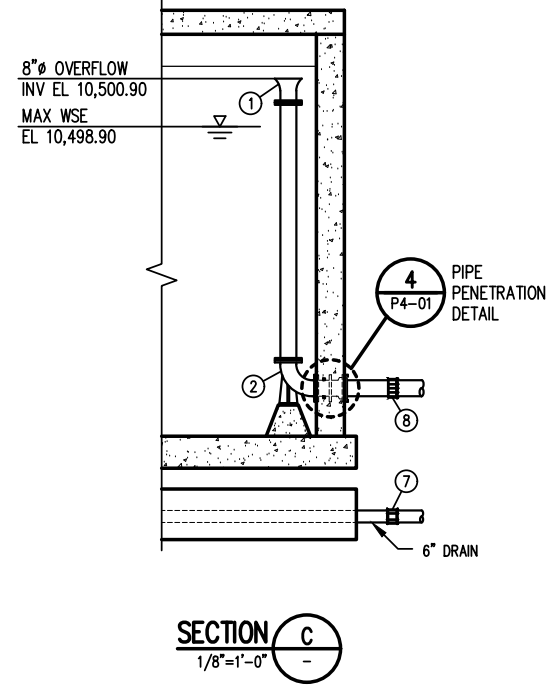
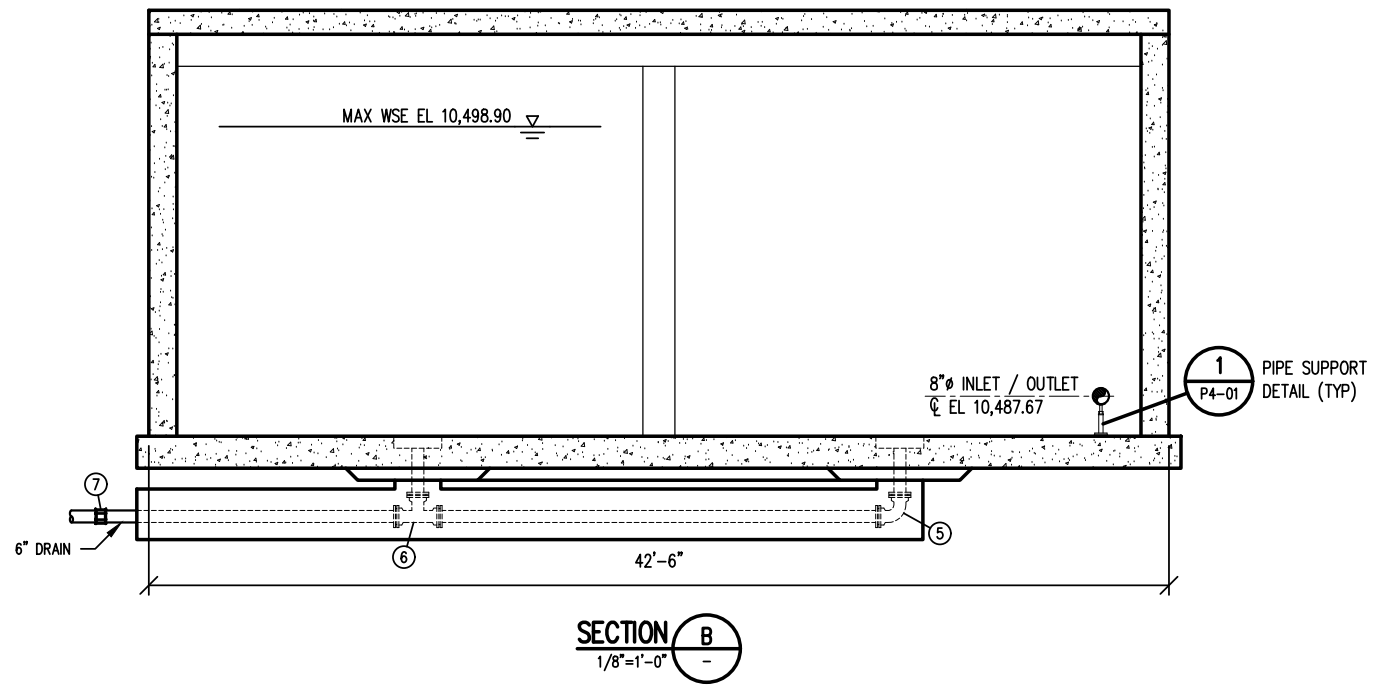


NOTICE TO CONTRACTOR:
 PAYMENT MAY TAKE UP TO 45 DAYS AFTER RECEIPT OF AN APPROVABLE PAY APPLICATION.

- EQUIPMENT NOTES:**
- ① 8" FLARED END
 - ② 8" BASE ELBOW
 - ③ 8"x8"x8" TEE
 - ④ 8" INLET CHECK VALVE
 - ⑤ 6" MJ 90° BEND
 - ⑥ 6"x6"x6" MJ TEE
 - ⑦ 6" DRESSER COUPLING
 - ⑧ 6" DRESSER COUPLING



REV. No.	DATE	DESCRIPTION
-	3/2017	BID SET



VILLAGE OF TAOS SKI VALLEY
 KACHINA WATER STORAGE TANK PROJECT
 WATER STORAGE TANK SECTION



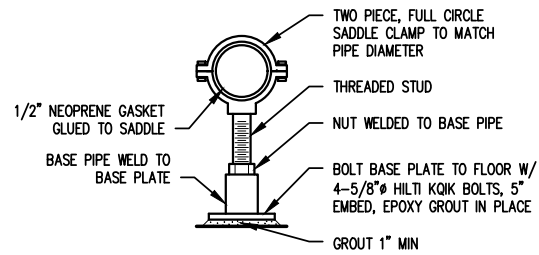
PROJECT No.: VTSV-S14-0132
 DATE: 3/17/2017
 DESIGNED BY: KAF
 DRAWN BY: KPR
 CHECKED BY: POB

Copyright: FEI Engineers Inc.



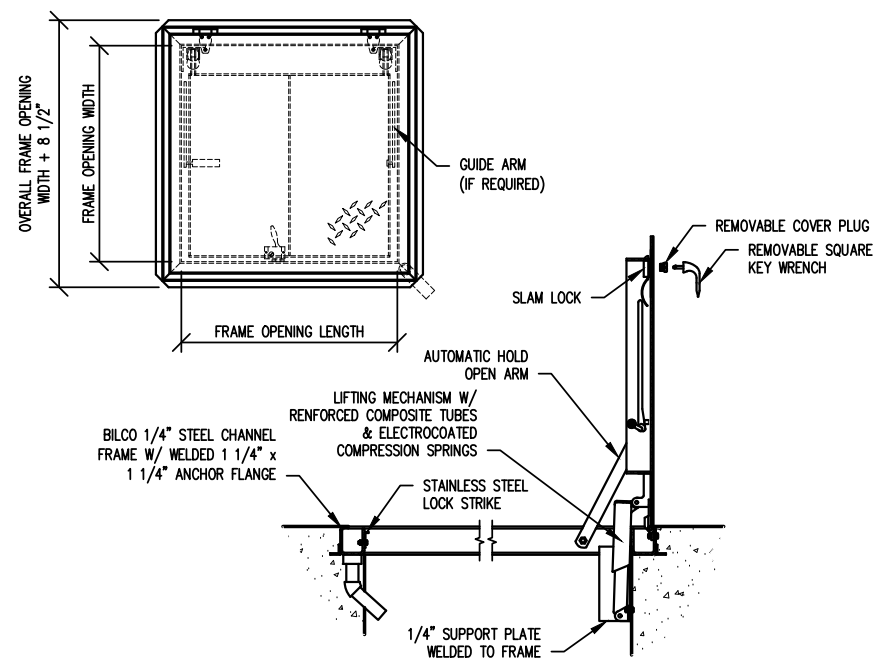
P3-01

LOCATION: W:\VTSV-S14-0132 - KACHINA TANK\4-01.dwg PLOTTED: 3/21/2017 12:05 PM BY: Keith P. Rindt

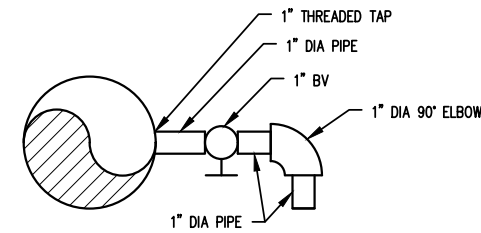


PIPE SIZE	CLAMP SIZE	THREADED STUD DIA	BASE PLATE	BASE PIPE
2" - 3"	.375"x1.5"	.75"	6"x6"	2"
4" - 12"	.5"x2"	1"	8"x8"	2"
14" - 16"	.625"x3"	1.5"	12"x12"	3"
18" - 24"	.75"x4"	2"	12"x12"	4"

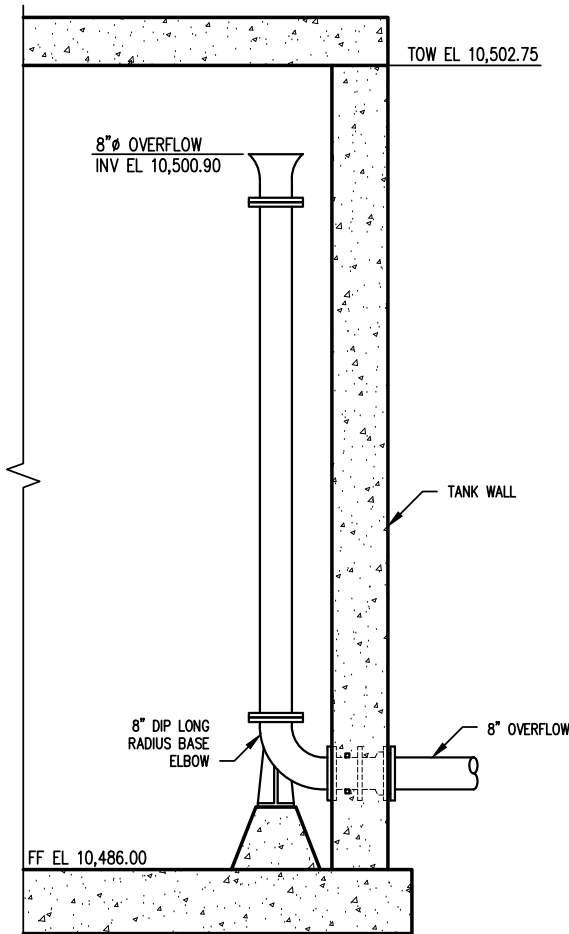
1 PIPE CLAMP / SUPPORT DETAIL
- NTS



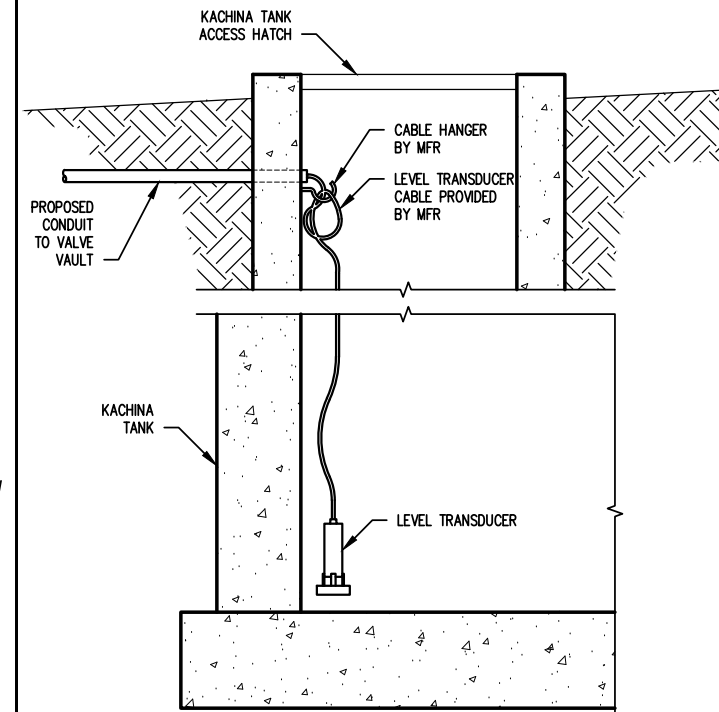
2 HATCH DETAIL
- NTS



3 SAMPLING TAP DETAIL
- NTS

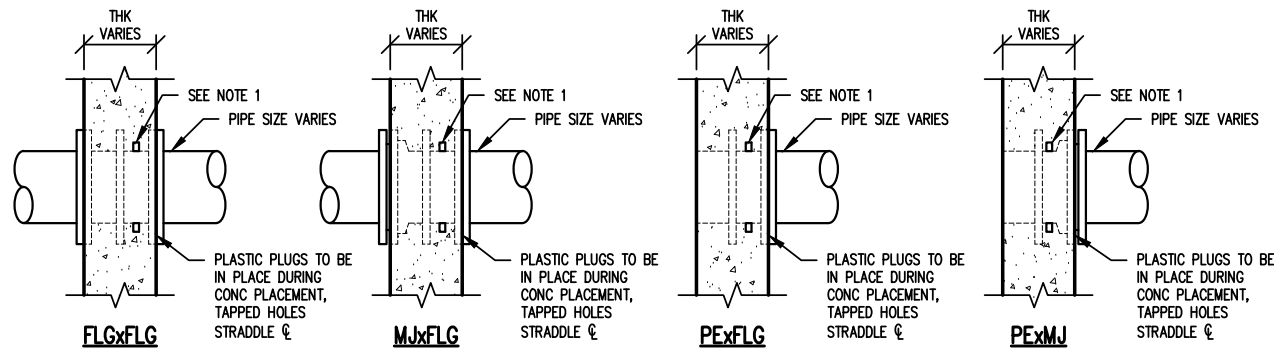


5 TANK OVERFLOW DETAIL
- 1/4"=1'-0"



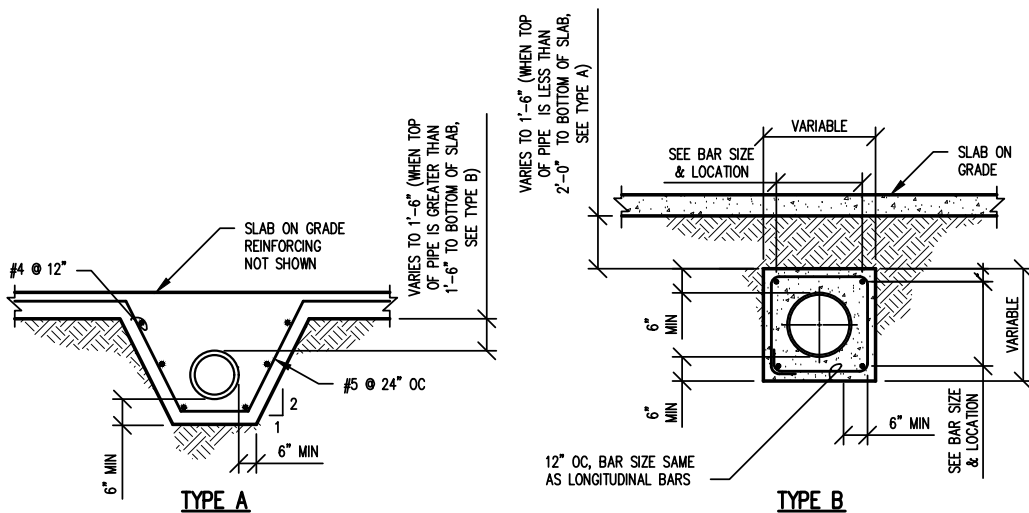
6 LEVEL TRANSDUCER DETAIL
- NTS

NOTICE TO CONTRACTOR:
PAYMENT MAY TAKE UP TO 45 DAYS AFTER RECEIPT OF AN APPROVABLE PAY APPLICATION.



4 WALL PIPE PENETRATION
- NTS

NOTE:
PROVIDE TYPE II WATER SEAL PER SPECIFICATION 03251 AROUND ALL PENETRATIONS INTO SUBMERGED OR POTENTIALLY SUBMERGED STRUCTURES. WATER STOP NEAREST WET SIDE



7 CONCRETE ENCASEMENT DETAIL
- NTS

PIPE I.D.	NO. OF LONGITUDINAL BARS AND LOCATION
6"	4 - NO. 4 BARS 1 EACH CORNER
8"	4 - NO. 4 BARS 1 EACH CORNER
10"	8 - NO. 4 BARS 3 EACH SIDE
12"	8 - NO. 4 BARS 3 EACH SIDE
14"	8 - NO. 4 BARS 3 EACH SIDE
15"	8 - NO. 4 BARS 3 EACH SIDE
18"	8 - NO. 5 BARS 3 EACH SIDE
20"	8 - NO. 6 BARS 3 EACH SIDE
24"	8 - NO. 6 BARS 3 EACH SIDE
30"	8 - NO. 7 BARS 3 EACH SIDE



REV. No.	DATE	DESCRIPTION
1	3/2017	BID SET

VILLAGE OF TAOS SKI VALLEY
KACHINA WATER STORAGE TANK PROJECT
PROCESS DETAILS

PROJECT No.: VTSV-S14-0132
DATE: 3/17/2017
DESIGNED BY: KAF
DRAWN BY: KPR
CHECKED BY: POB



Copyright: FEI Engineers Inc.



P4-01

LOCATION: W:\VTSV-S14-0132 - KACHINA TANK\EO-01.dwg PLOTTED: 3/21/2017 12:05 PM BY: Keith P. Rindt

ABBREVIATIONS

A	AMPRES
AC	ABOVE COUNTER
AFF	ABOVE FINISHED FLOOR
C	CONDUIT
CATV	CABLE TELEVISION
CB	CIRCUIT BREAKER
EM	EMERGENCY
(E)	EXISTING
FA	FIRE ALARM
GFI	GROUND FAULT INTERRUPTED
IG	ISOLATED GROUND
MLO	MAIN LUGS ONLY
NL	NIGHT LIGHT
NTS	NOT TO SCALE
RL	RELOCATED
TYP	TYPICAL
UON	UNLESS OTHERWISE NOTED
V	VOLTS
WP	WEATHERPROOF
XFMR	TRANSFORMER
	EQUIPMENT REFERENCE
	DETAIL NOTE REFERENCE

ONE-LINE SYMBOLS

	PANELBOARD
	WEATHERHEAD
	DRY-TYPE TRANSFORMER
	PADMOUNT UTILITY TRANSFORMER
	SHORT CIRCUIT VALUE
	WIRE SIZE
	METER AND CTs
	FUSED DISCONNECT
	NON-FUSED DISCONNECT
	MOTOR
	CIRCUIT BREAKER
	FUSED SWITCH
	MAGNETIC STARTER/CONTACTOR
	GENERATOR
	GROUND

LIGHTING SYMBOLS

	WALL MOUNTED FLUORESCENT
	HID HIGHBAY LIGHT FIXTURE
	SURFACE MOUNTED WALL LIGHT
	SURFACE 1' X 4' FLUORESCENT
	PRISMATIC LAY-IN FLUORESCENT
	OPEN FLUOR. STRIP LIGHT
	COMBINATION EXIT AND EGRESS LIGHT
	EMERGENCY LIGHTING UNIT
	WALL LIGHT
	EXTERIOR POLE LIGHT
	SINGLE POLE SWITCH
	MULTI LOCATION SWITCH

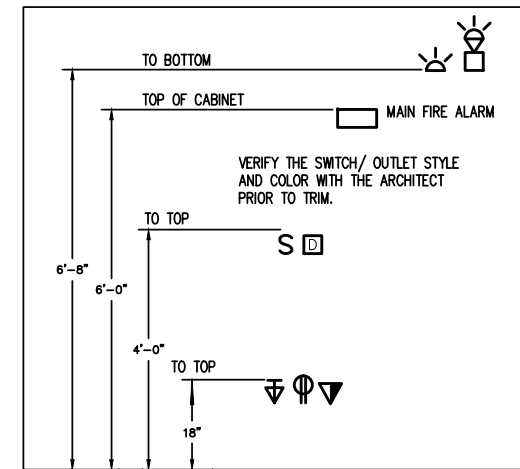
POWER SYMBOLS

	CEILING MOUNTED JUNCTION BOX
	WALL MOUNTED JUNCTION BOX
	FLOOR MOUNTED JUNCTION BOX
	WIREMOLD SURFACE RACEWAY
	EXTERIOR GROUND FAULT RECEPTACLE
	DUPLEX RECEPTACLE
	FOURPLEX RECEPTACLE
	ABOVE COUNTER MOUNTED RECEPTACLE
	GROUND FAULT RECEPTACLE
	CEILING MOUNTED RECEPTACLE
	FLOOR MOUNTED DUPLEX RECEPTACLE
	FLOOR MOUNTED FOURPLEX RECEPTACLE
	SPECIAL RECEPTACLE
	FLOOR MOUNTED SPECIAL RECEPTACLE
	TELEPHONE OUTLET
	STOP/START STATION
	CONTROL POINT
	WALL MOUNTED TELEPHONE OUTLET
	COMBINATION VOICE/DATA

FIRE ALARM SYMBOLS

	SMOKE DETECTOR
	THERMAL DETECTOR
	MANUAL PULL STATION
	ADA HORN STROBE (WITH cd LEVEL)
	OUTSIDE FIRE ALARM HORN/LIGHT
	WALL MOUNTED STROBE
	CEILING MOUNTED DEVICE
	ELECTROMAGNETIC DOOR HOLD OPEN
	WATER FLOW SWITCH
	TAMPER SWITCH
	SMOKE DAMPER
	FIRE ALARM CONTROL PANEL
	ANNUNCIATOR PANEL
	CONTROL MODULE
	MONITOR MODULE
	SUPERVISORY RELAY
	REMOTE TEST STATION
	PROJECTED BEAM DETECTOR
	DIGITAL COMMUNICATOR
	FRAMED GRAPHIC WALL MAP

TYPICAL MOUNTING HEIGHTS LEGEND



NOTICE TO CONTRACTOR:
PAYMENT MAY TAKE UP TO 45 DAYS AFTER RECEIPT OF AN APPROVABLE PAY APPLICATION.



REV. No.	DATE	DESCRIPTION
1	3/2017	BID SET

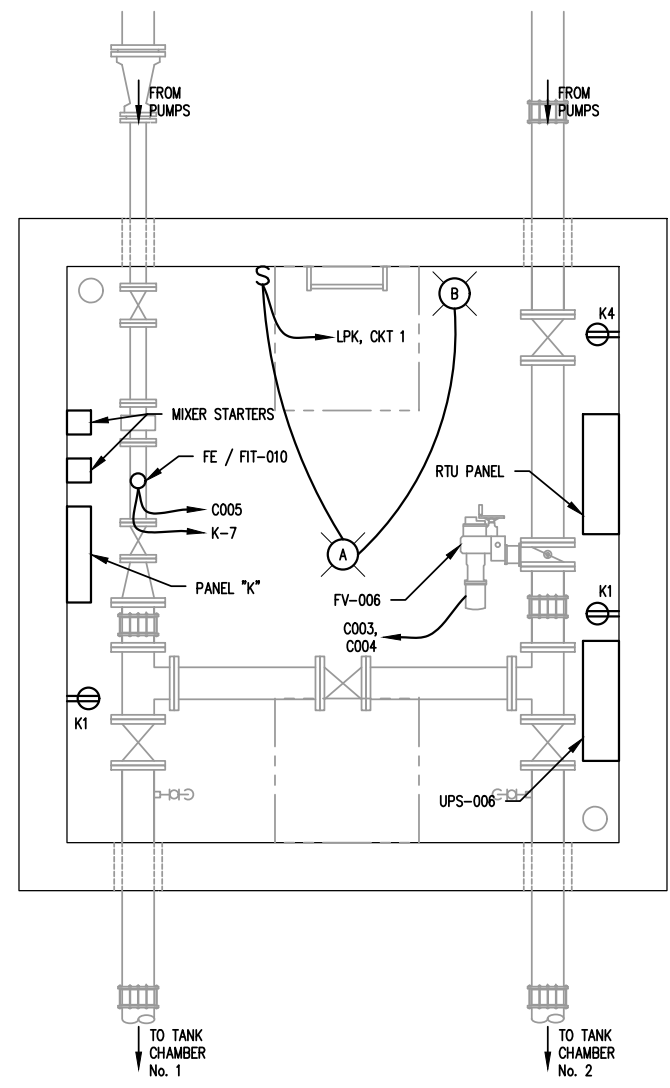
VILLAGE OF TAOS SKI VALLEY
KACHINA WATER STORAGE TANK PROJECT

ELECTRICAL LEGENDS & ABBREVIATIONS

PROJECT No.:	VTSV-S14-0132
DATE:	3/17/2017
DESIGNED BY:	NET
DRAWN BY:	KPR
CHECKED BY:	POB



NOTICE TO CONTRACTOR:
 PAYMENT MAY TAKE UP TO 45 DAYS AFTER RECEIPT OF AN
 APPROVABLE PAY APPLICATION.



CONTROL VALVE VAULT PLAN
 1/4"=1'-0"

REV. No.	DATE	DESCRIPTION
-	3/2017	BID SET

VILLAGE OF TAOS SKI VALLEY
 KACHINA WATER STORAGE TANK PROJECT
 VAULT POWER PLAN

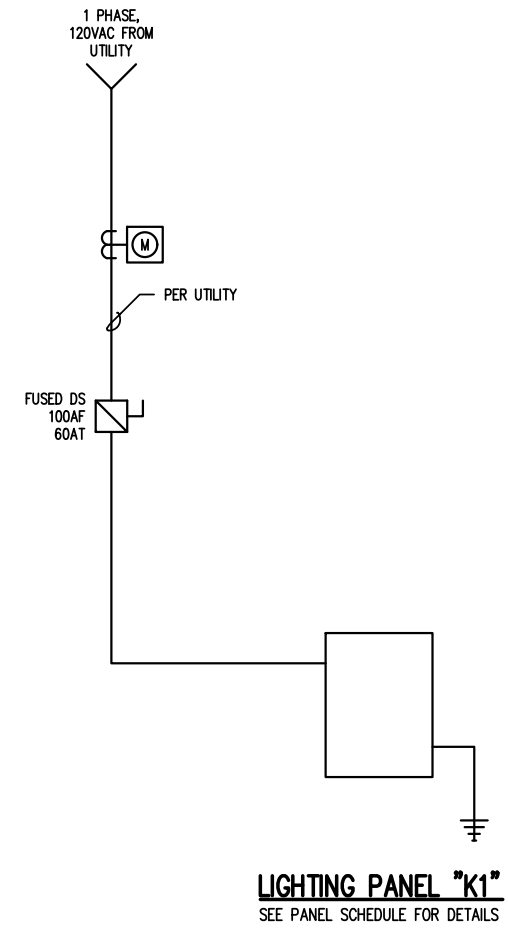
PROJECT No.: VTSV-S14-0132
 DATE: 3/17/2017
 DESIGNED BY: NET
 DRAWN BY: KPR
 CHECKED BY: POB



Copyright: FEI Engineers Inc.

E1-01

LOCATION: W:\VTSV-S14-0132 - KACHINA TANK\E1-01.dwg PLOTTED: 3/21/2017 12:05 PM BY: Keith P. Rindt



VTSV -Kachina Tank - Conduit and Cable Schedule

Conduit Type	Conduit Number	Source	Destination	Approximate Run (FT)	Conduit size	Conductors (per Conduit)	Neutral	Ground
P -	001	UTILITY	MAIN DISCONNECT SWITCH	30	2"	PER UTILITY	PER UTILITY	PER UTILITY
P -	002	MAIN DISCONNECT SWITCH	LIGHTING PANEL	300	2"	1 #3	1 #3	1 #8
C -	001	PANEL K	KACHINA TANK RTU PANEL	50	3/4"	1#12	1#12	1#12
C -	002	LEVEL TRANSMITTERS	RTU	100	3/4"	2-2/C, #18TSP		
C -	003	FV-006	RTU	50	3/4"	1-2/C, #18TSP		
C -	004	FV-006	RTU	50	3/4"	6#12	1#12	1#12
C -	005	FE / FIT-010	RTU	50	3/4"	1-2/C, #18TSP		
C -	008	LSH-013	RTU	50	3/4"	4#12	1#12	1#12
C -	009	UA-014	RTU	50	3/4"	1#12	1#12	1#12
C -	100	LP-K1	KACHINA PUMP STATION RTU	50	3/4"	1#12	1#12	1#12
C -	101	PUMP No. 1	KACHINA PUMP STATION RTU	100	3/4"	4#12	1#12	1#12
C -	102	PUMP No. 2	KACHINA PUMP STATION RTU	100	3/4"	4#12	1#12	1#12
C -	103	HC-021 & HC-022	KACHINA PUMP STATION RTU	100	3/4"	4#12	1#12	1#12
C -	104	PIT-025	KACHINA PUMP STATION RTU	100	3/4"	4#12	1#12	1#12
C -	105	FIT-020	RTU	30	3/4"	1-2/C, #18TSP		

Phase Voltage:	240	NEW	60 MCB			
Line Voltage:	120	PANEL "K"	60 Bus Amperage			
Phase:	1	Mounting:	Wall			
		Isc Rating:	12kA			
Description	Circuit Breaker	Connected Load (VA)			Circuit Breaker	Description
		#	A	B		
Vault Lights and Receptacle	20	1	500			
Spare	20	3	-	500	2	20 RTU PANEL
Mixer MX-1	20	5	1656	840	4	20 Sump Pump Receptacle
FE / FIT-010	20	7	240	1656	6	20 Mixer MX-2
Spare	20	9	-	-	8	20 Spare
BFV FV-006	20	11	400	-	10	20 Spare
					12	20 Spare
Total Per Side:			2796	2996		
TOTAL DEMAND						
5.79 KVA						
48.27 AMPS						

NOTES:

- CONTRACTOR TO PROVIDE PRIMARY CONDUIT, AND CONDUIT FROM DISCONNECT SWITCH.
- CONTRACTOR TO PROVIDE POWER COMPANY METERING SOCKET, FUSED DISCONNECT SWITCH, AND LIGHTING PANEL.
- ALL 20 AMP LIGHTING CIRCUITS REQUIRE #12 CONDUCTORS, IN 3/4" CONDUIT, MINIMUM.

NOTICE TO CONTRACTOR:

PAYMENT MAY TAKE UP TO 45 DAYS AFTER RECEIPT OF AN APPROVABLE PAY APPLICATION.



REV. No.	DATE	DESCRIPTION
1	3/2017	BID SET

VILLAGE OF TAOS SKI VALLEY
KACHINA WATER STORAGE TANK PROJECT

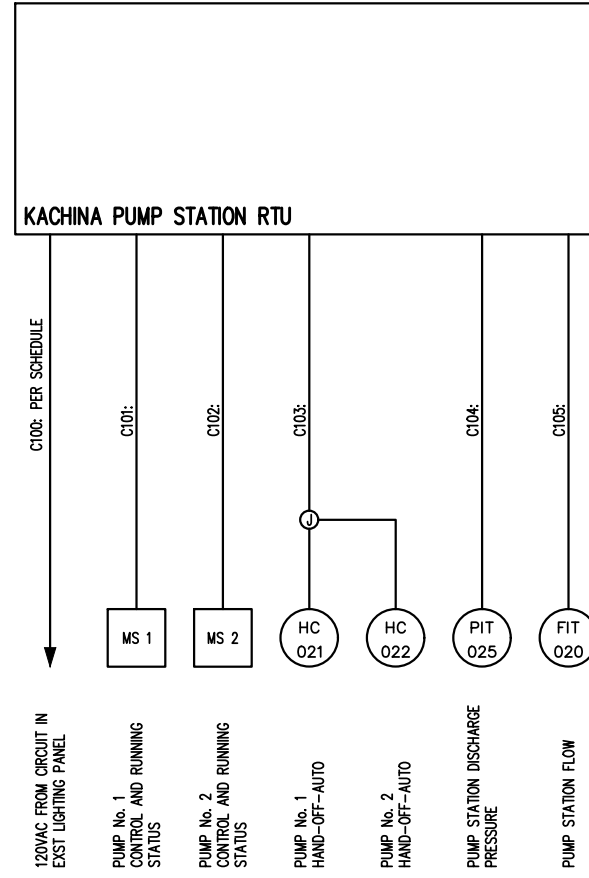
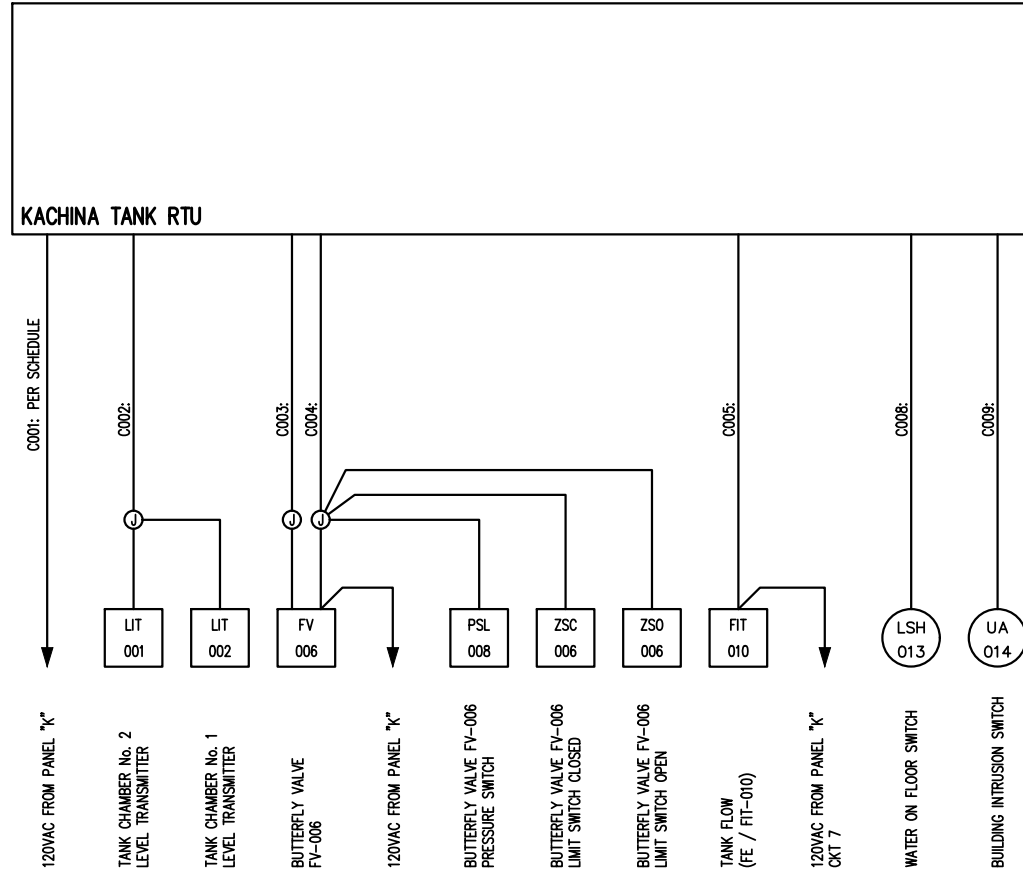
ELECTRICAL ONE-LINE DIAGRAM

PROJECT No.:	VTSV-S14-0132
DATE:	3/17/2017
DESIGNED BY:	NET
DRAWN BY:	KPR
CHECKED BY:	POB

E4-01



LOCATION: W:\VTSV-S14-0132 - KACHINA TANK\E4-02.dwg PLOTTED: 3/21/2017 12:05 PM BY: Keith P. Rindt



NOTICE TO CONTRACTOR:
 PAYMENT MAY TAKE UP TO 45 DAYS AFTER RECEIPT OF AN APPROVABLE PAY APPLICATION.



REV. No.	DATE	DESCRIPTION
-	3/2017	BID SET

VILLAGE OF TAOS SKI VALLEY
 KACHINA WATER STORAGE TANK PROJECT

RTU ONE-LINE DRAWINGS

PROJECT No.: VTSV-S14-0132
 DATE: 3/17/2017
 DESIGNED BY: NET
 DRAWN BY: KPR
 CHECKED BY: POB



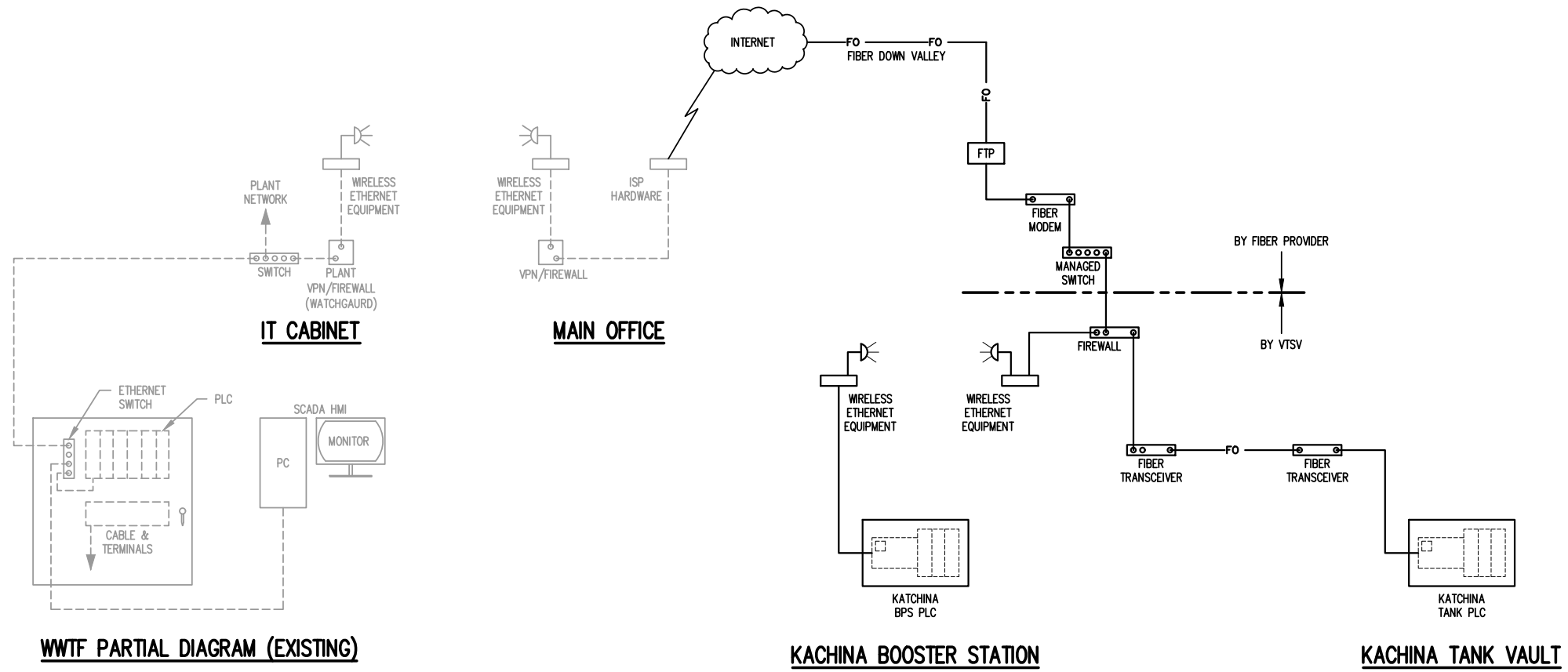
Copyright: FEI Engineers Inc.



E4-02

LOCATION: W:\VTSV-S14-0132 - KACHINA TANK\E4-03.dwg PLOTTED: 3/21/2017 12:05 PM BY: Keith P. Rindt

NOTICE TO CONTRACTOR:
 PAYMENT MAY TAKE UP TO 45 DAYS AFTER RECEIPT OF AN APPROVABLE PAY APPLICATION.



REV. No.	DATE	DESCRIPTION
1	3/2017	BID SET

VILLAGE OF TAOS SKI VALLEY
 KACHINA WATER STORAGE TANK PROJECT

CONTROL SYSTEM BLOCK DIAGRAM

PROJECT No.: VTSV-S14-0132
 DATE: 3/17/2017
 DESIGNED BY: NET
 DRAWN BY: KPR
 CHECKED BY: POB



Copyright: FEI Engineers Inc.

E4-03